

| | | | | |
|-----------------------|-------------|--------------------|--------------|-----------|
| F.A.I. RTE. | SECTION | COUNTY | TOTAL SHEETS | SHEET NO. |
| 90/94 | 2008-070 RS | COOK | 13 | 1 |
| FED. ROAD DIST. NO. 1 | ILLINOIS | CONTRACT NO. 60F68 | | |

13-1-12

STATE OF ILLINOIS
DEPARTMENT OF TRANSPORTATION
DIVISION OF HIGHWAYS

PROPOSED HIGHWAY PLANS

F.A.I. 90/94: I-90/94 (KENNEDY EXPRESSWAY)

AT OHIO ST. RAMPS

SECTION: 2008-070 RS

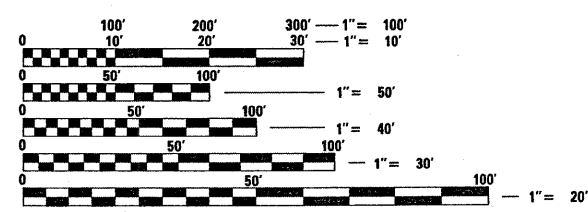
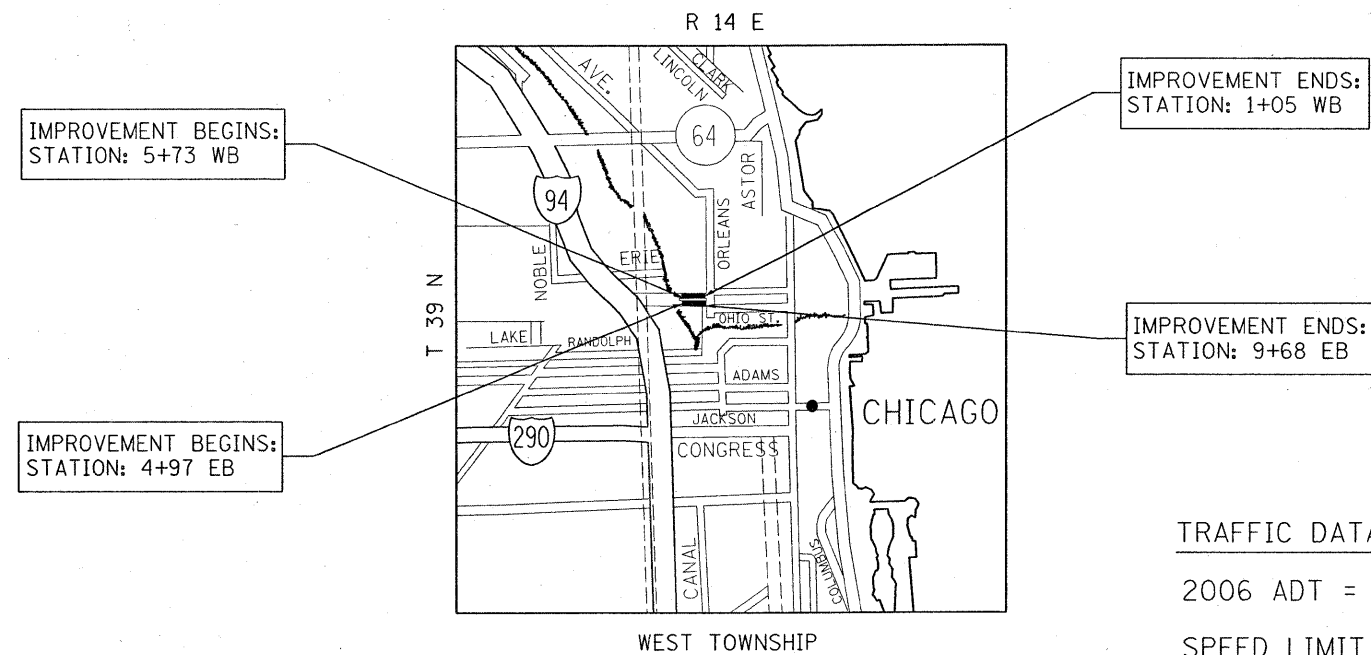
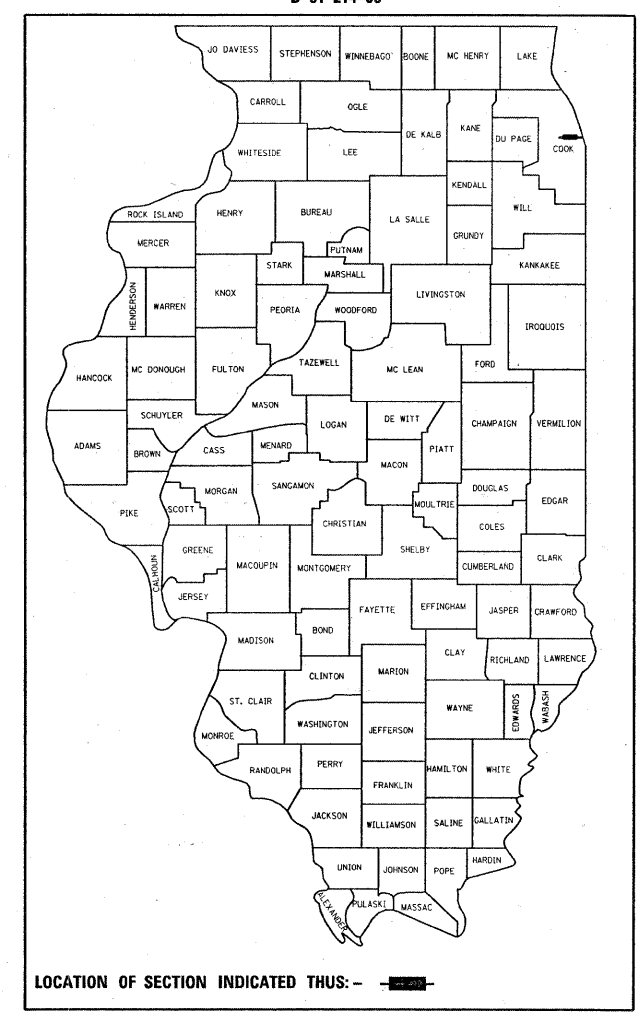
RESURFACING (MAINTENANCE)

COOK COUNTY

C-91-214-09

FOR INDEX OF SHEETS, SEE SHEET NO. 2

IMPROVEMENT LOCATED IN THE CITY OF CHICAGO



FULL SIZE PLANS HAVE BEEN PREPARED USING STANDARD ENGINEERING SCALES. REDUCED SIZED PLANS WILL NOT CONFORM TO STANDARD SCALES. IN MAKING MEASUREMENTS ON REDUCED PLANS, THE ABOVE SCALES MAY BE USED.

J.U.L.I.E.
JOINT UTILITY LOCATION INFORMATION FOR EXCAVATION
1-800-892-0123
OR 811

TRAFFIC DATA
2006 ADT = 27,500
SPEED LIMIT = 40 MPH

GROSS AND NET LENGTH OF IMPROVEMENT = 471 FEET = 0.09 MILES

PROJECT ENGINEER: JENPAI CHANG (847) 705-4432
PROJECT MANAGER: KEN ENG
CONTRACT NO. 60F68

STATE OF ILLINOIS
DEPARTMENT OF TRANSPORTATION
DIVISION OF HIGHWAYS

SUBMITTED: DECEMBER 16, 2008

Diana M. O'Keefe DEPUTY DIRECTOR OF HIGHWAYS, REGION ENGINEER

January 30, 2009
Charles G. Ingersoll ENGINEER OF DESIGN AND ENVIRONMENT

January 30, 2009
Christine M. Reed DIRECTOR OF HIGHWAYS, CHIEF ENGINEER

PRINTED BY THE AUTHORITY OF THE STATE OF ILLINOIS

INDEX OF SHEETS

STATE STANDARDS

GENERAL NOTES

| <u>SHEET NO.</u> | <u>DESCRIPTION</u> | <u>STANDARD NO.</u> | <u>DESCRIPTION</u> |
|------------------|--|---------------------|--|
| 1 | TITLE SHEET | 000001-05 | STANDARD SYMBOLS, ABBREVIATIONS AND PATTERNS |
| 2 | INDEX OF SHEETS, STATE STANDARDS & GENERAL NOTES | 442201-03 | CLASS C AND D PATCHES |
| 3 | SUMMARY OF QUANTITIES | 701411-05 | LANE CLOSURE, MULTILANE, AT ENTRANCE OR EXIT RAMP, FOR SPEEDS \geq 45 MPH |
| 4-5 | EXISTING AND PROPOSED TYPICAL SECTIONS | 701426-03 | LANE CLOSURE, MULTILANE, INTERMITTENT OR MOVING OPERATION FOR SPEEDS \geq 45 MPH |
| 6 | ROADWAY AND PAVEMENT MARKING PLAN | 701601-06 | URBAN LANE CLOSURE, MULTILANE, 1W OR 2W WITH NONTRAVERSABLE MEDIAN |
| 7 | PAVEMENT PATCHING FOR HMA SURFACED PAVEMENT, BD 400-04 (BD-22) | 701901-01 | TRAFFIC CONTROL DEVICES |
| 8 | BUTT JOINT AND HMA TAPER, BD 400-05 (BD-32) | | |
| 9 | SINGLE LANE WEAVE AND MULTI-LANE WEAVE, TC-09 | | |
| 10-11 | MULTI-LANE FREEWAY PAVEMENT MARKING DETAIL, TC-12 | | |
| 12 | PAVEMENT MARKING LETTERS AND SYMBOLS FOR TRAFFIC STAGING, TC-16 <i>NOT USED</i> | | |
| 13 | FREEWAY SHOULDER CLOSURES AND PARTIAL RAMP CLOSURES, TC-17 | | |

BEFORE STARTING ANY EXCAVATION, THE CONTRACTOR SHALL CALL "C.U.A.N." (CHICAGO UTILITY ALERT NETWORK) AT (312) 744-7000 FOR FIELD LOCATIONS OF BURIED ELECTRIC, TELEPHONE AND GAS UTILITIES 48 HOUR NOTIFICATION IS REQUIRED).

THE CONTRACTOR WILL NOT BE ABLE TO SET UP A YARD OR FIELD OFFICE ON STATE (OR TOLLWAY) PROPERTY WITHOUT THE WRITTEN PERMISSION OF THE DEPARTMENT (OR ISTHA).

BUTT JOINTS WILL BE INSTALLED AT THE ENDS OF RESURFACING (WHERE RESURFACING MEETS EXISTING PAVEMENT) IN ACCORDANCE WITH THE "BUTT JOINT AND HMA TAPER DETAILS" SHEET INCLUDED IN THE PLANS UNLESS OTHERWISE SPECIFIED.

WHEN MILLED PAVEMENT IS OPEN TO TRAFFIC, THE MAXIMUM GRADE DIFFERENTIAL BETWEEN PASSES OF THE MILLING MACHINE SHALL NOT EXCEED 1 1/2 INCHES WHERE THE SPEED LIMIT IS 45 MPH OR LESS, AND 1 INCH WHERE THE SPEED LIMIT IS OVER 45 MPH. WITH WRITTEN APPROVAL FROM THE RESIDENT ENGINEER, A MAXIMUM GRADE DIFFERENTIAL OF 3 INCHES MAY BE ALLOWED IF THE EDGE OF THE MILLING IS SLOPED A MINIMUM OF 1:3 (V:H).

WHEN ARTIFICIAL LIGHTING IS UTILIZED IN NIGHT OPERATIONS, THE CONTRACTOR SHALL EXERCISE THE UTMOST PRECAUTIONS IN PREVENTING ADVERSE VISABILITY TO THE MOTORING PUBLIC AND ADJOINING RESIDENTIAL AREAS.

ALL PAVEMENT PATCHING LOCATIONS WILL BE DETERMINED IN THE FIELD BY THE ENGINEER.

BEFORE BEGINNING ANY WORK, THE CONTRACTOR SHALL RETAIN AND RECORD FOR FUTURE REFERENCE, ALL EXISTING PAVEMENT MARKING LINES (AND RAISED REFLECTIVE PAVEMENT MARKERS) IN ORDER THAT THESE LOCATIONS CAN BE RE-ESTABLISHED FOR STRIPING. EXACT LOCATIONS OF ALL PAVEMENT MARKINGS SHALL BE AS DIRECTED BY THE ENGINEER.

ALL PAVEMENT MARKINGS AND RAISED REFLECTIVE PAVEMENT MARKERS OBLITERATED BY MILLING AND RESURFACING OPERATIONS ON SIDE STREETS AND ENTRANCES SHALL BE REPLACED AND PAID FOR IN KIND.

THE RESIDENT ENGINEER SHALL CONTACT EXPRESSWAY OPERATIONS AT (847) 705-4151 A MINIMUM OF 2 WEEKS PRIOR TO PLACEMENT OF FINAL PAVEMENT MARKINGS.

THE RESIDENT ENGINEER SHALL CONTACT THE TRAFFIC CONTROL SUPERVISOR AT (847) 705-4155 A MINIMUM OF 72 HOURS PRIOR TO THE INSTALLATION OF ANY TEMPORARY TRAFFIC CONTROL DEVICES.

| | | | | | | | | | | | |
|--|-------------------|------------|-----------|---|--|---------------------------|---------------------|--------|--------------|---|--|
| FILE NAME = | USER NAME = mosse | DESIGNED - | REVISED - | STATE OF ILLINOIS DEPARTMENT OF TRANSPORTATION | I-90/94 AT OHIO ST. RAMP INDEX OF SHEETS, STATE STANDARDS AND GENERAL NOTES | F.A.I. RTE. | SECTION | COUNTY | TOTAL SHEETS | SHEET NO. | |
| ct:\pw_work\PWIDOT\MOSSE\d0104195\sh_rch.dgn | | DRAWN - | REVISED - | | | 90/94 | 2008-070 RS | COOK | 13 | 2 | |
| PLOT SCALE = 50.0000' / IN. | | CHECKED - | REVISED - | | | CONTRACT NO. 60F68 | | | | | |
| PLOT DATE = 1/27/2009 | | DATE - | REVISED - | | | SCALE: | SHEET NO. OF SHEETS | STA. | TO STA. | FED. ROAD DIST. NO. 1 ILLINOIS FED. AID PROJECT | |

| SUMMARY OF QUANTITIES | | | URBAN 100% STATE | | CONSTRUCTION TYPE CODE | | | | |
|-----------------------|--|-----------------|---------------------|-----------------|------------------------|--|--|--|--|
| CODE NO | ITEM | UNIT | TOTAL QUANTITIES | 1000-2A | | | | | |
| 40600200 | BITUMINOUS MATERIALS (PRIME COAT) | TON | 5 | 5 | | | | | |
| 40600300 | AGGREGATE (PRIME COAT) | TON | 11 | 11 | | | | | |
| 40600400 | MIXTURE FOR CRACKS, JOINTS, AND FLANGEWAYS | TON | 3 | 3 | | | | | |
| 40600635 | LEVELING BINDER (MACHINE METHOD), N70 | TON | 300 | 300 | | | | | |
| 40600895 | CONSTRUCTING TEST STRIP | EACH | 1 | 1 | | | | | |
| 40600982 | HOT-MIX ASPHALT SURFACE REMOVAL - BUTT JOINT | SO YD | 115 | 115 | | | | | |
| 40603595 | POLYMERIZED HOT-MIX ASPHALT SURFACE COURSE, MIX "F", N90 | TON | 531 | 531 | | | | | |
| 44000156 | HOT-MIX ASPHALT SURFACE REMOVAL, 1 3/4" | SO YD | 510 | 510 | | | | | |
| 44000159 | HOT-MIX ASPHALT SURFACE REMOVAL, 2 1/2" | SO YD | 4910 | 4910 | | | | | |
| 44201807 | CLASS D PATCHES, TYPE III, 13 INCH | SO YD | 30 | 30 | | | | | |
| 44201809 | CLASS D PATCHES, TYPE IV, 13 INCH | SO YD | 75 | 75 | | | | | |
| 55039700 | STORM SEWERS TO BE CLEANED | FOOT | 500 | 500 | | | | | |
| 67000400 | ENGINEER'S FIELD OFFICE, TYPE A | CAL MO | 3 | 3 | | | | | |
| 67100100 | MOBILIZATION | L SUM | 1 | 1 | | | | | |
| 70106800 | CHANGEABLE MESSAGE SIGN | CAL MO | 4 | 4 | | | | | |
| 70300100 | SHORT TERM PAVEMENT MARKING | FOOT | 1300 | 1300 | | | | | |
| 70300210 | TEMPORARY PAVEMENT MARKING - LETTERS AND SYMBOLS | SO FT | 146 | 146 | | | | | |
| 70300220 | TEMPORARY PAVEMENT MARKING - LINE 4" | FOOT | 3960 | 3960 | | | | | |
| 70300230 | TEMPORARY PAVEMENT MARKING - LINE 5" | FOOT | 740 | 740 | | | | | |
| 70300240 | TEMPORARY PAVEMENT MARKING - LINE 6" | FOOT | 300 | 300 | | | | | |
| 70300260 | TEMPORARY PAVEMENT MARKING - LINE 12" | FOOT | 290 | 290 | | | | | |
| 70300280 | TEMPORARY PAVEMENT MARKING - LINE 24" | FOOT | 70 | 70 | | | | | |

| SUMMARY OF QUANTITIES | | | URBAN 100% STATE | | CONSTRUCTION TYPE CODE | | | | |
|-----------------------|--|-------|---------------------|---------|------------------------|--|--|--|--|
| CODE NO | ITEM | UNIT | TOTAL QUANTITIES | 1000-2A | | | | | |
| 70301000 | WORK ZONE PAVEMENT MARKING REMOVAL | SO FT | 1730 | 1730 | | | | | |
| * 78000100 | THERMOPLASTIC PAVEMENT MARKING - LETTERS AND SYMBOLS | SO FT | 146 | 146 | | | | | |
| * 78000200 | THERMOPLASTIC PAVEMENT MARKING - LINE 4" | FOOT | 1900 | 1900 | | | | | |
| * 78000600 | THERMOPLASTIC PAVEMENT MARKING - LINE 12" | FOOT | 290 | 290 | | | | | |
| * 78000650 | THERMOPLASTIC PAVEMENT MARKING - LINE 24" | FOOT | 70 | 70 | | | | | |
| * 78004210 | PREFORMED PLASTIC PAVEMENT MARKING, TYPE B LINE 4" (INLAID) | FOOT | 80 | 80 | | | | | |
| * 78004220 | PREFORMED PLASTIC PAVEMENT MARKING, TYPE B LINE 5" (INLAID) | FOOT | 470 | 470 | | | | | |
| * 78004230 | PREFORMED PLASTIC PAVEMENT MARKING, TYPE B LINE 6" (INLAID) | FOOT | 300 | 300 | | | | | |
| * 78100100 | RAISED REFLECTIVE PAVEMENT MARKER | EACH | 60 | 60 | | | | | |
| 78300100 | PAVEMENT MARKING REMOVAL | SO FT | 434 | 434 | | | | | |
| 78300200 | RAISED REFLECTIVE PAVEMENT MARKER REMOVAL | EACH | 60 | 60 | | | | | |
| * 88600600 | DETECTOR LOOP REPLACEMENT | FOOT | 150 | 150 | | | | | |
| X7011015 | TRAFFIC CONTROL AND PROTECTION (EXPRESSWAYS) | L SUM | 1 | 1 | | | | | |
| Z0018500 | DRAINAGE STRUCTURES TO BE CLEANED | EACH | 7 | 7 | | | | | |

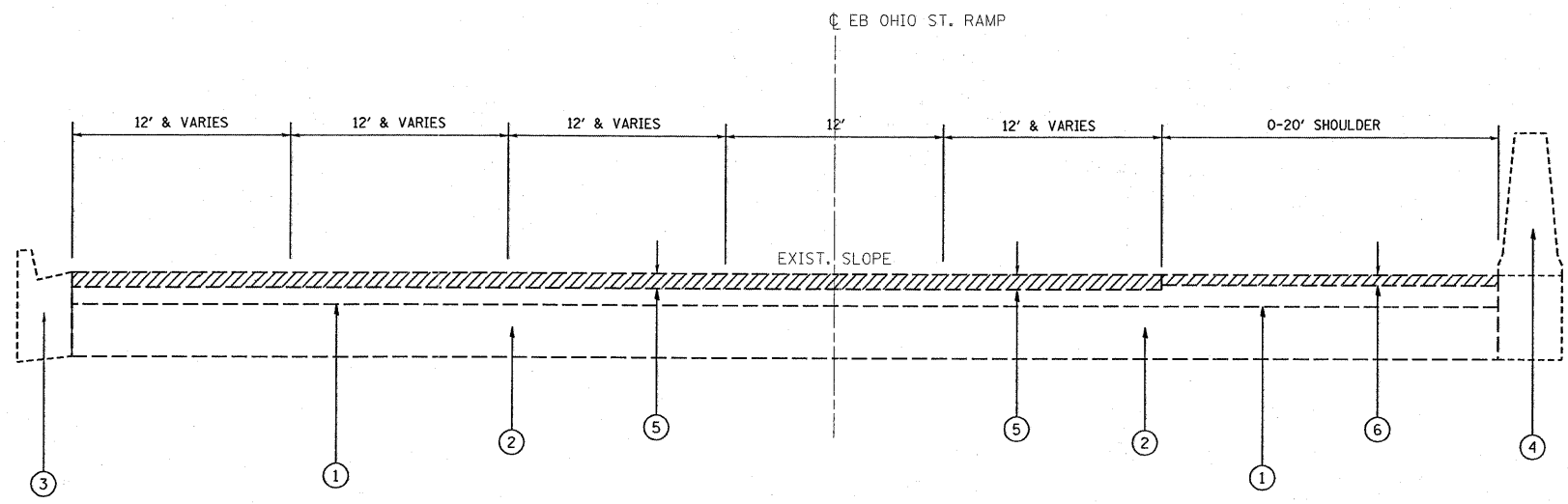
* SPECIALTY ITEMS

| REVISIONS | |
|-----------|------|
| NAME | DATE |
| | |
| | |

ILLINOIS DEPARTMENT OF TRANSPORTATION
SUMMARY OF QUANTITIES

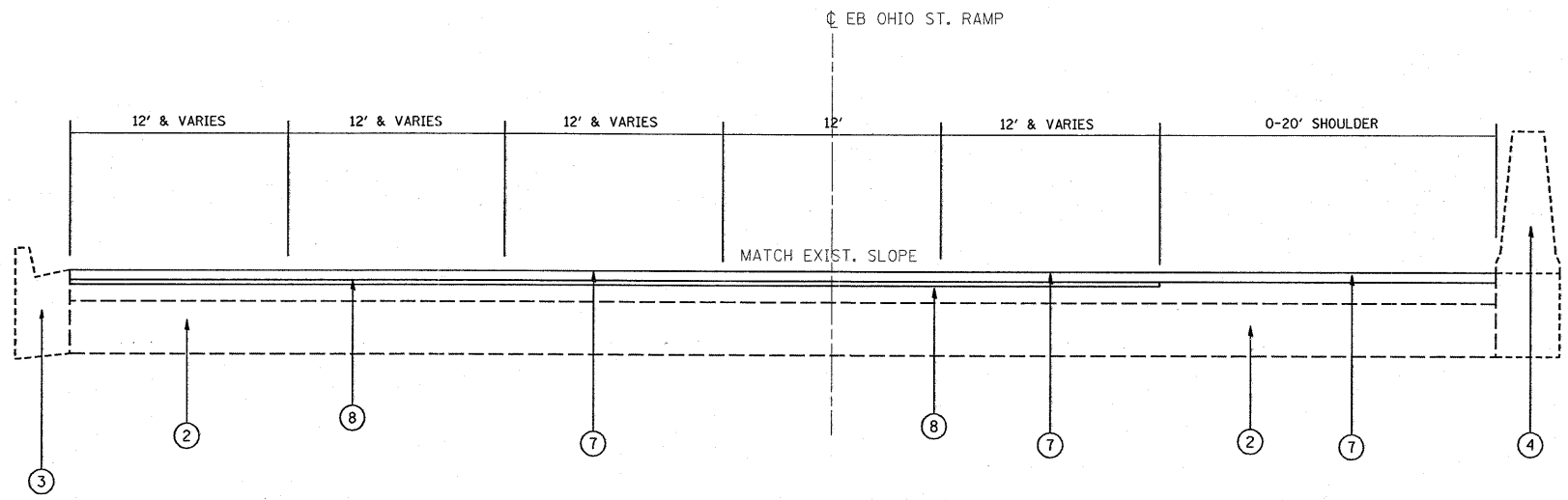
Rev.

12/23/2008 8:40:10 AM \\BPN001\PROJECTS\2008\60F68\60F68_001\BSPH.LCHK.DGN



EXISTING TYPICAL SECTION
EASTBOUND OHIO ST. RAMP

STATION:
4+97 TO 9+68



PROPOSED TYPICAL SECTION
EASTBOUND OHIO ST. RAMP

STATION:
4+97 TO 9+68

LEGEND

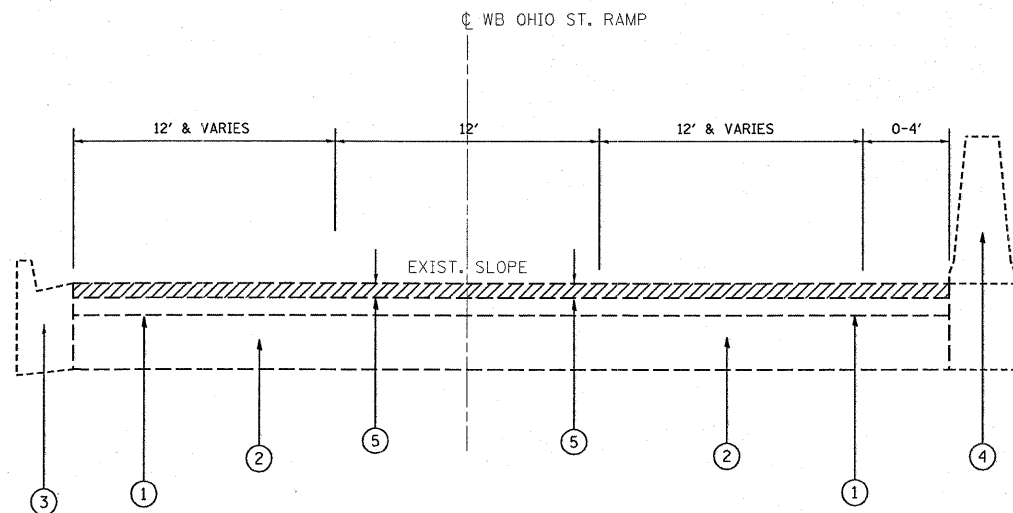
- ① EXISTING HOT-MIX ASPHALT SURFACE COURSE (BEFORE MILLING), 5 1/2"(±)
- ② EXISTING PCC BASE COURSE, 10"(±)
- ③ EXISTING CONCRETE CURB AND GUTTER, TYPE B-6.24
- ④ EXISTING CONCRETE BARRIER
- ⑤ PROPOSED HOT-MIX ASPHALT SURFACE REMOVAL - 2 1/2"
(3 1/2" OF HOT-MIX ASPHALT TO REMAIN)
- ⑥ PROPOSED HOT-MIX ASPHALT SURFACE REMOVAL - 1 3/4"
(4 1/4" OF HOT-MIX ASPHALT TO REMAIN)
- ⑦ PROPOSED HOT-MIX ASPHALT SURFACE COURSE, MIX "F", N90, 1 3/4"
- ⑧ PROPOSED LEVELING BINDER (MM), N70, 3/4"

NOTES:

HMA SHOULDER WITH BARRIER WALL FROM STA. 4+97 TO STA. 5+59 ON LT.
CONC. CURB & GUTTER FROM STA. 8+72 TO STA. 9+68 ON RT.

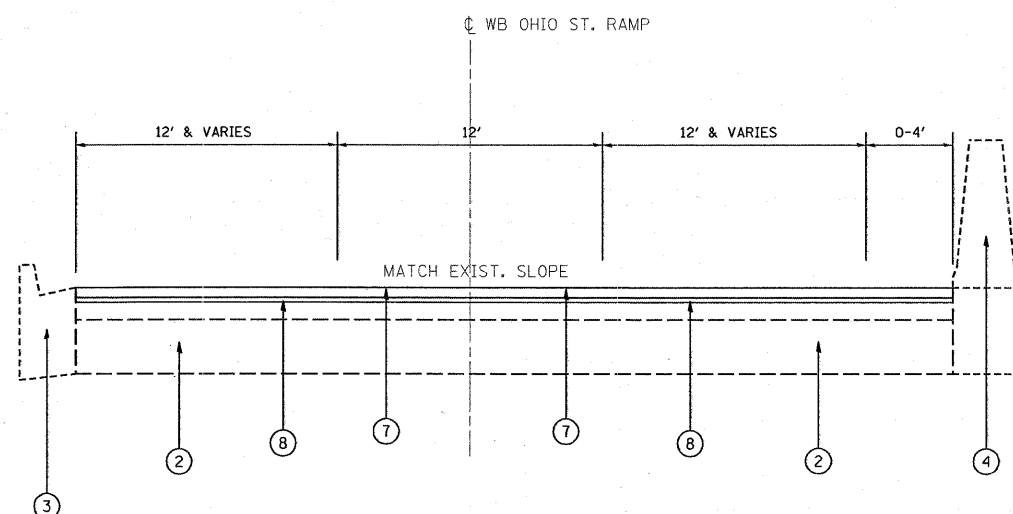
* MILLING SHALL BE EXECUTED FIRST FOR THIS PROJECT

| | | | | | | | | | | | |
|---|-----------------------------|------------|-----------|---|--|--------------------|---------------------|--------|--------------|---|--|
| FILE NAME = | USER NAME = mosse | DESIGNED - | REVISED - | STATE OF ILLINOIS DEPARTMENT OF TRANSPORTATION | I-9094 AT OHIO ST. RAMPS EXISTING AND PROPOSED TYPICAL SECTIONS | F.A.I. RTE. | SECTION | COUNTY | TOTAL SHEETS | SHEET NO. | |
| ca:\pwork\pwidot\MOSSSE\d0104195\sh...rdy.dgn | PLOT SCALE = 50.0000 1/ IN. | DRAWN - | REVISED - | | | 90/94 | 2008-070 RS | COOK | 13 | 4 | |
| PLOT DATE = 12/23/2008 | DATE - | CHECKED - | REVISED - | | | CONTRACT NO. 60F68 | | | | | |
| | | DATE - | REVISED - | | | SCALE: | SHEET NO. OF SHEETS | STA. | TO STA. | FED. ROAD DIST. NO. 1 ILLINOIS FED. AID PROJECT | |



EXISTING TYPICAL SECTION
WESTBOUND OHIO ST. RAMP

STATION:
1+05 TO 5+73



PROPOSED TYPICAL SECTION
WESTBOUND OHIO ST. RAMP

STATION:
1+05 TO 5+73

LEGEND

- ① EXISTING HOT-MIX ASPHALT SURFACE COURSE (BEFORE MILLING), 5 1/2"(±)
- ② EXISTING PCC BASE COURSE, 10"(±)
- ③ EXISTING CONC. CURB AND GUTTER, TYPE B-6.24
- ④ EXISTING CONCRETE BARRIER
- ⑤ PROPOSED HOT-MIX ASPHALT SURFACE REMOVAL - 2 1/2"
(3 1/2" OF HOT-MIX ASPHALT TO REMAIN)
- ⑥ PROPOSED HOT-MIX ASPHALT SURFACE REMOVAL - 1 3/4"
(4 1/4" OF HOT-MIX ASPHALT TO REMAIN)
- ⑦ PROPOSED HOT-MIX ASPHALT SURFACE COURSE, MIX "F", N90, 1 3/4"
- ⑧ PROPOSED LEVELING BINDER (MM), N70, 3/4"

NOTES:

HMA SHOULDER WITH BARRIER WALL FROM STA. 4+87 TO STA. 5+73 ON LT.
CONC. CURB & GUTTER FROM STA. 1+05 TO STA. 1+75 ON RT.

HOT-MIX ASPHALT MIXTURE REQUIREMENTS

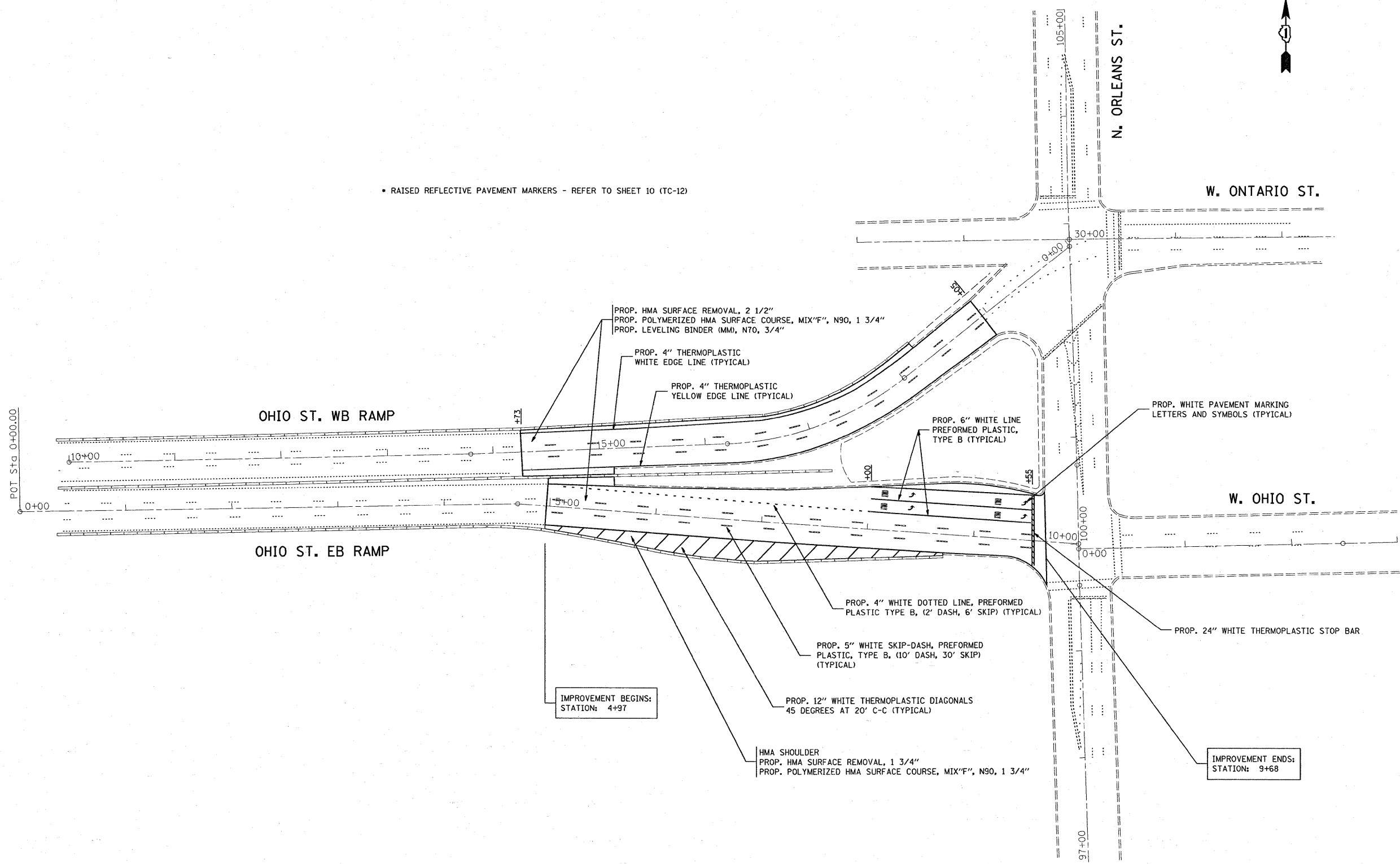
| | MIXTURE TYPE | AC TYPE | AIR VOIDS (%) |
|---------|---|---------------------|---------------|
| ROADWAY | POLYMERIZED HOT-MIX ASPHALT SURFACE COURSE, MIX "F", N90, 1 3/4 " | SBS/SBR PG 70-22 | 4% @ 90 GYR |
| | LEVELING BINDER (MM), N70, 3/4" | PG 64-22/58-22 | 4% @ 70 GYR |
| PATCHES | CLASS D PATCHES, (BINDER IL-19.0 MM), 10" | PG 64-22* | 4% @ 70 GYR |
| | HOT-MIX ASPHALT REPLACEMENT OVER PATCHES, (BINDER IL-19.0 MM) | PG 64-22* | 4% @ 70 GYR |

THE UNIT WEIGHT USED TO CALCULATE ALL HOT-MIX ASPHALT SURFACE MIXTURE QUANTITIES IS 112 LBS/SQ YD/IN

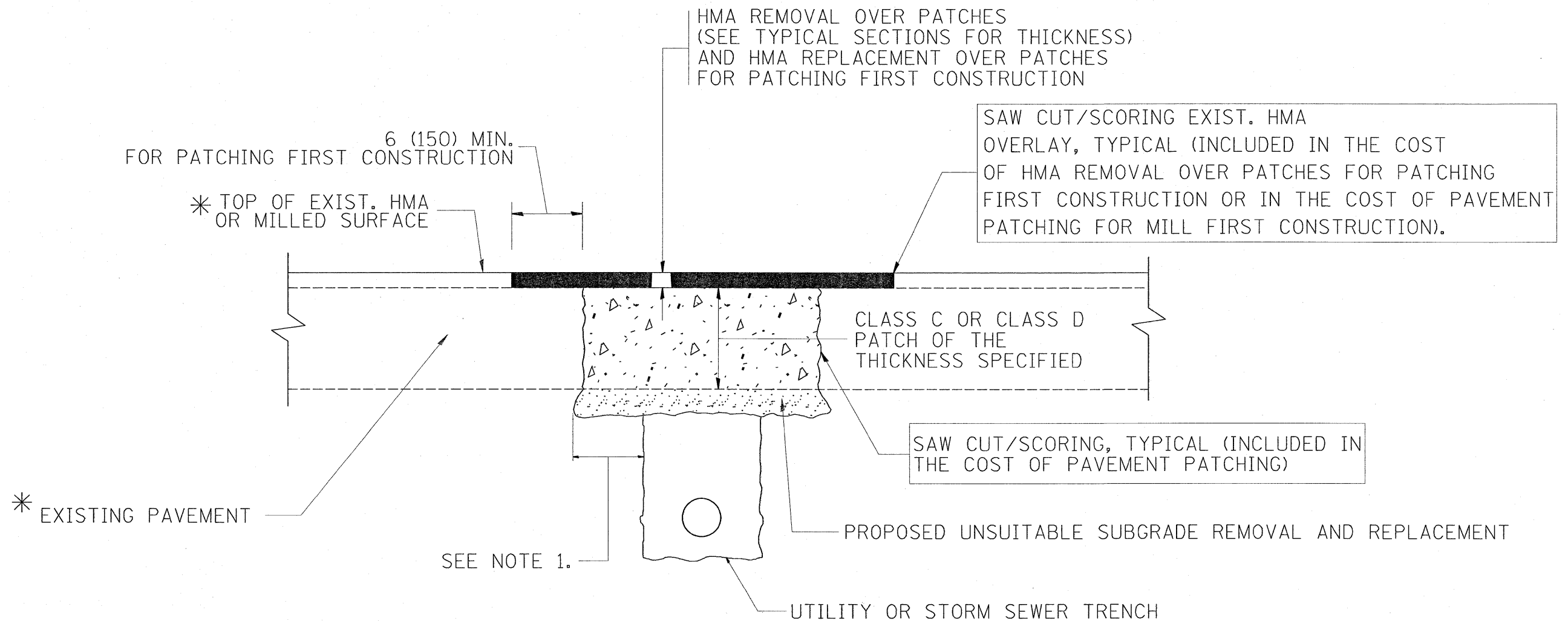
* WHEN RAP EXCEEDS 20%, THE NEW ASPHALT BINDER IN THE MIX SHALL BE PG 58-22



• RAISED REFLECTIVE PAVEMENT MARKERS - REFER TO SHEET 10 (TC-12)



| | | | | | | | | | | | | |
|---|-----------------------------|------------|-----------|---|---|---------------------|--------------|---|------------------------|----------------|-----------------------|-------------------|
| FILE NAME = c:\pw_work\PWIDOT\MOSSSE\d0104195\sh_rdy.dgn | USER NAME = mosse | DESIGNED - | REVISED - | STATE OF ILLINOIS DEPARTMENT OF TRANSPORTATION | I-9094 AT OHIO ST. RAMPS ROADWAY AND PAVEMENT MARKING PLAN | | | F.A.I. RTE. 90/94 | SECTION 2008-070 RS | COUNTY COOK | TOTAL SHEETS 13 | SHEET NO. 6 |
| | PLOT SCALE = 50.0000' / IN. | DRAWN - | REVISED - | | SCALE: | SHEET NO. OF SHEETS | STA. TO STA. | CONTRACT NO. 60F68 | | | | |
| | PLOT DATE = 1/27/2009 | CHECKED - | REVISED - | | | | | FED. ROAD DIST. NO. ILLINOIS FED. AID PROJECT | | | | |
| | | DATE - | REVISED - | | | | | | | | | |



* SEE TYPICAL SECTIONS FOR THICKNESS AND MATERIALS

NOTES:

1. THE WIDTH OF THE FULL DEPTH PATCH OVER A TRENCH SHALL BE 12 (300) WIDER ON EACH SIDE OF THE TRENCH.
2. FOR METHOD OF MEASUREMENT AND BASIS OF PAYMENT, SEE RECURRING SPECIAL PROVISION "PATCHING WITH HOT-MIX ASPHALT OVERLAY REMOVAL".

SEQUENCE OF CONSTRUCTION (PATCHING FIRST)

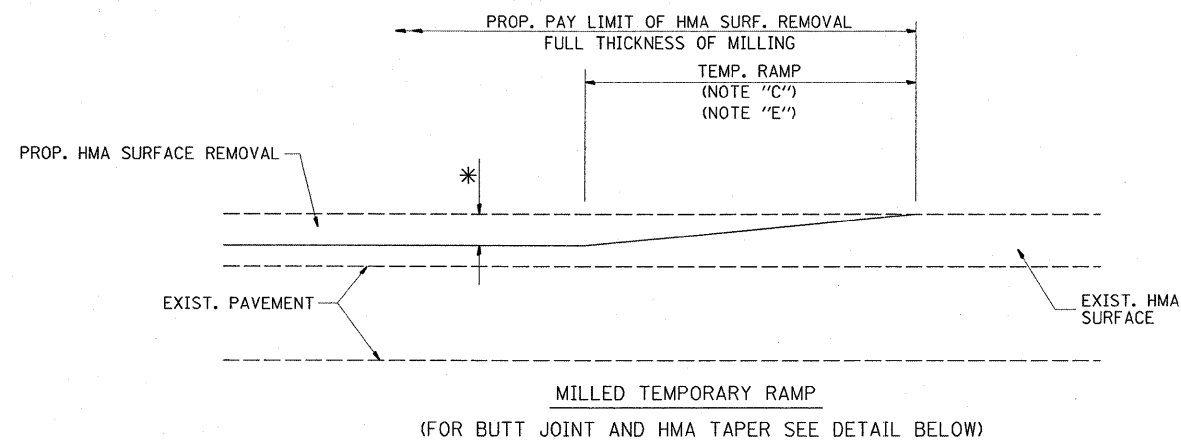
1. REMOVE THE EXISTING HMA MATERIAL OVER THE AREA TO BE PATCHED.
2. REMOVE AND REPLACE WITH CLASS C OR D PATCH.
3. REPLACE HMA MATERIAL OVER THE AREA TO BE PATCHED.

SEQUENCE OF CONSTRUCTION (MILLING FIRST)

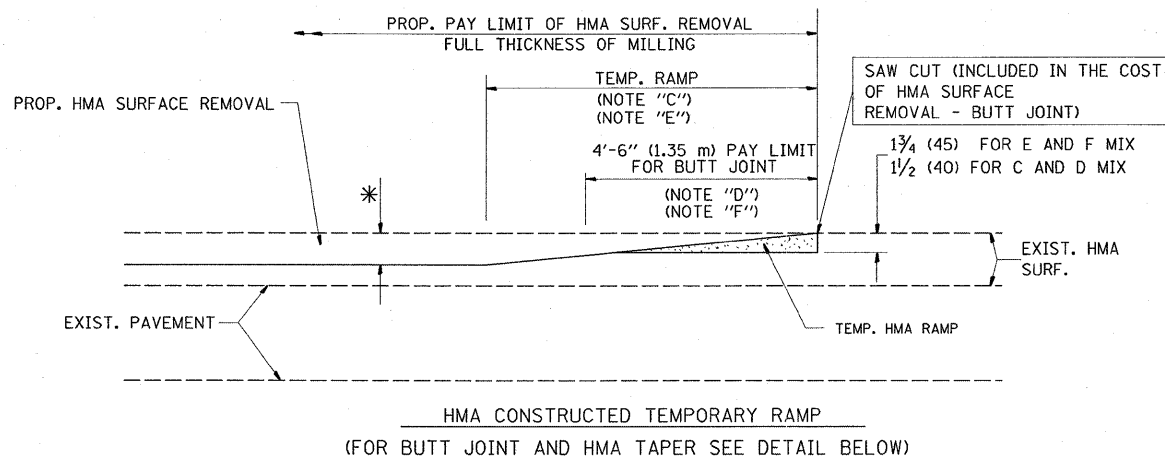
1. MILL HMA FIRST IF THERE IS AT LEAST 4 1/2 INCHES OR MORE OF HMA MATERIAL ON TOP OF THE EXISTING PAVEMENT OR IF THE PAVEMENT IS FULL DEPTH HMA. A MINIMUM OF 2 INCHES OF HMA MATERIAL SHALL BE IN PLACE AFTER MILLING.
2. REMOVE AND REPLACE WITH FULL DEPTH CLASS D PATCHES TO TOP OF MILLED SURFACE.

ALL DIMENSIONS ARE IN INCHES (MILLIMETERS) UNLESS OTHERWISE SHOWN.

| | | | | | | | | | | | | |
|---|-----------------------------|--------------------|-----------------------------|---|--|-------------------------|--------------|---|-------------|--------|--------------|-----------|
| FILE NAME = | USER NAME = mossse | DESIGNED - R. SHAH | REVISED - A. ABBAS 04-27-98 | STATE OF ILLINOIS DEPARTMENT OF TRANSPORTATION | PAVEMENT PATCHING FOR HMA SURFACED PAVEMENT | | | F.A. RTE. | SECTION | COUNTY | TOTAL SHEETS | SHEET NO. |
| ct:\pw\work\VPWIDOT\MOSSSEV\0104195\1.sts | d.dgn | DRAWN - | REVISED - R. BORO 01-01-07 | | | | | 90/94 | 2008-070 RS | COOK | 13 | 7 |
| | PLOT SCALE = 50.0000' / IN. | CHECKED - | REVISED - R. BORO 09-04-07 | | BD400-04 (BD-22) | | | CONTRACT NO. | | | | |
| | PLOT DATE = 12/18/2008 | DATE - 10-25-94 | REVISED - K. ENG 10-27-08 | | SCALE: NONE | SHEET NO. 1 OF 1 SHEETS | STA. TO STA. | FED. ROAD DIST. NO. 1 ILLINOIS FED. AID PROJECT | | | | |

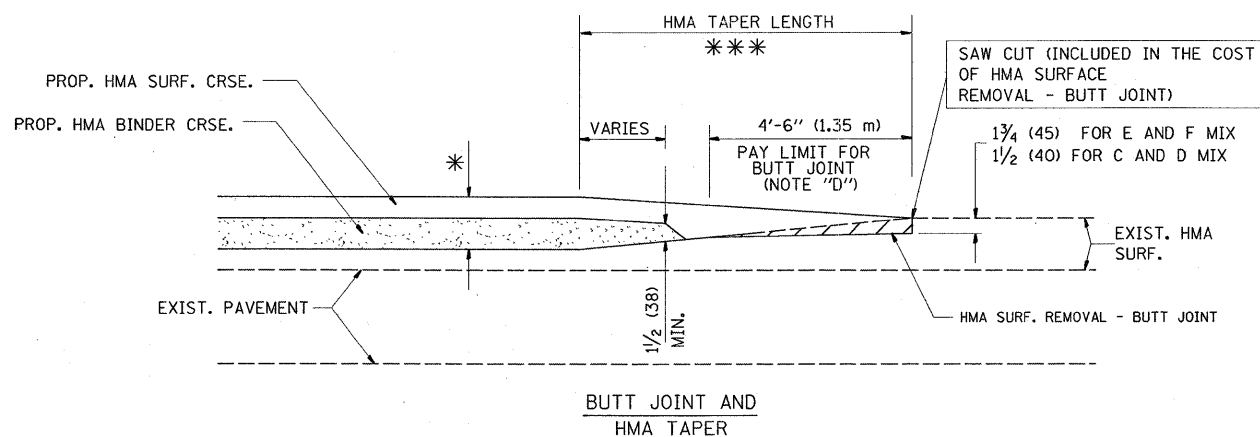


OPTION 1

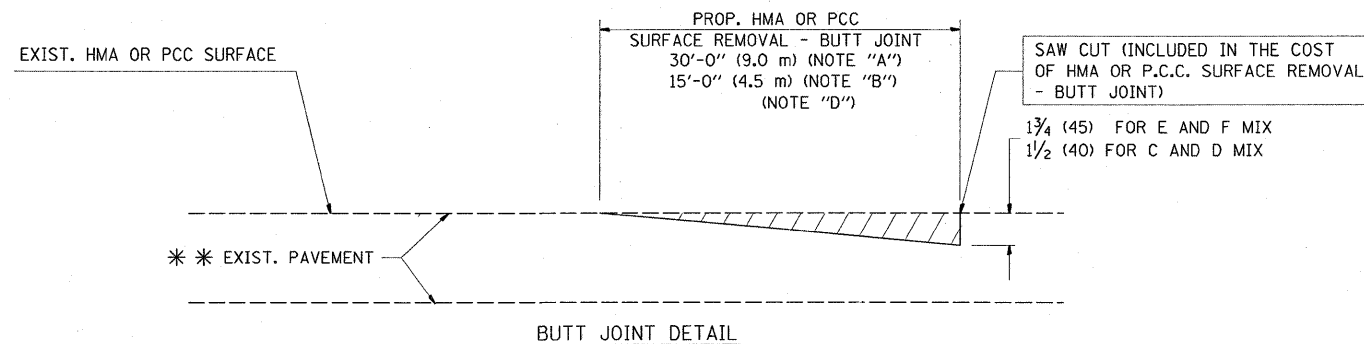


OPTION 2

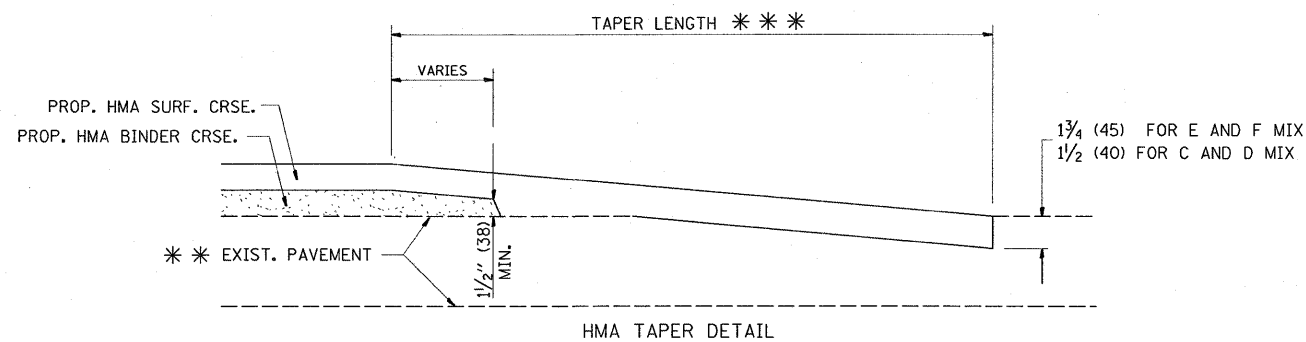
TYPICAL TEMPORARY RAMP



TYPICAL BUTT JOINT AND HMA TAPER FOR MILLING AND RESURFACING



BUTT JOINT DETAIL



TYPICAL BUTT JOINT AND HMA TAPER FOR RESURFACING ONLY

*** PC CONCRETE, HMA OR HMA RESURFACED PAVEMENT.

NOTES

- A: MAINLINE ROADWAYS AND MAJOR SIDE ROADS.
 - B: MINOR SIDE ROADS.
 - C: THE TEMP. RAMP SHALL BE CONSTRUCTED IMMEDIATELY UPON REMOVAL OF THE EXISTING HMA SURFACE.
 - D: THE BUTT JOINT SHALL BE CONSTRUCTED IMMEDIATELY PRIOR TO PLACING THE PROPOSED HMA COURSES.
 - E: TAPER THE TEMP. RAMP AT A RATE OF 3'-0" (900 mm) PER 1 INCH (25 mm) OF MILLING THICKNESS.
 - F: INSTALLATION AND REMOVAL OF THE 4'-6" (1.35 m) TEMP. RAMP IS INCLUDED IN COST OF HMA SURFACE REMOVAL - BUTT JOINT
 - G: SEE ARTICLE 406.08 AND 406.14 OF THE STANDARD SPECIFICATIONS FOR "HMA AND/OR PCC SURFACE REMOVAL, BUTT JOINT".
- * SEE TYPICAL SECTIONS FOR MILLING THICKNESS.
- *** 20'-0" (6.1 m) PER 1 (25) RESURFACING (NOTE "A")
 10'-0" (3.0 m) PER 1 (25) RESURFACING (NOTE "B")

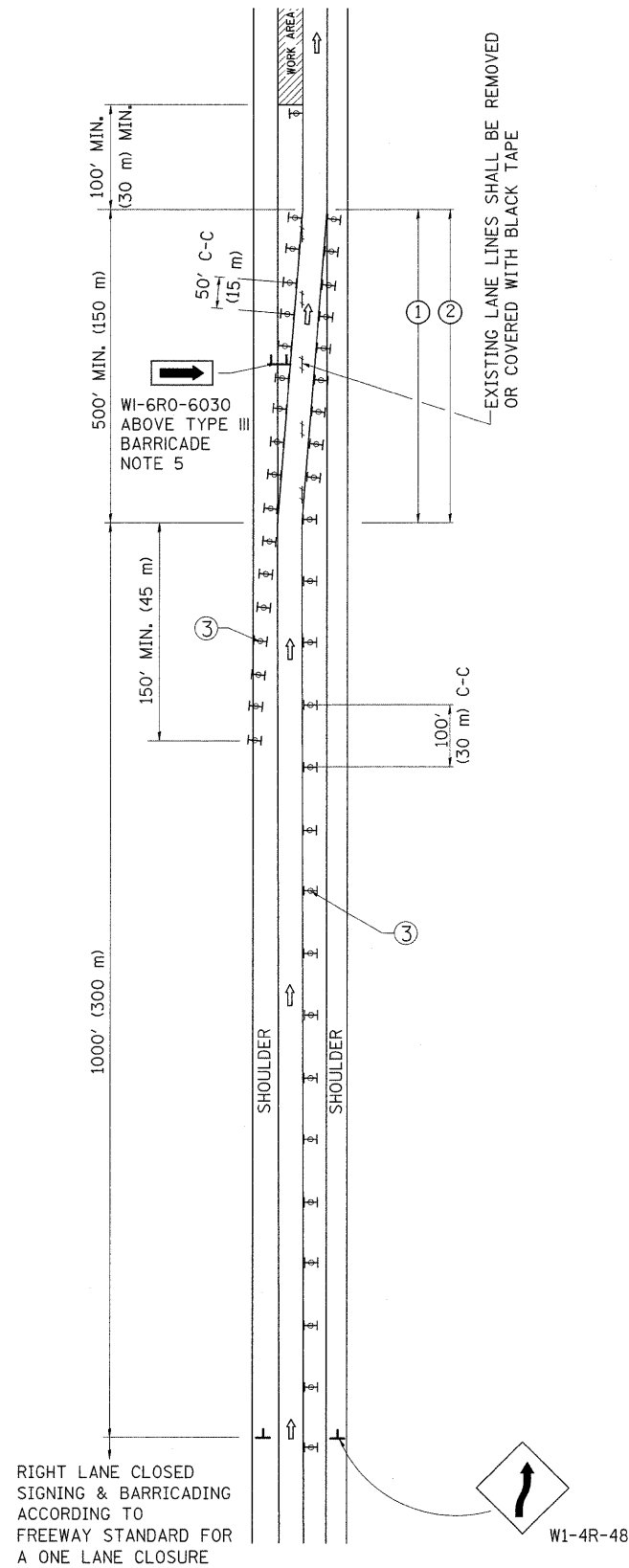
BASIS OF PAYMENT:

THE BUTT JOINT WILL BE PAID FOR AT THE CONTRACT UNIT PRICE PER SQUARE YARD (SQUARE METER) FOR "HOT-MIX ASPHALT SURFACE REMOVAL - BUTT JOINT" OR FOR "PORTLAND CEMENT CONCRETE SURFACE REMOVAL - BUTT JOINT".

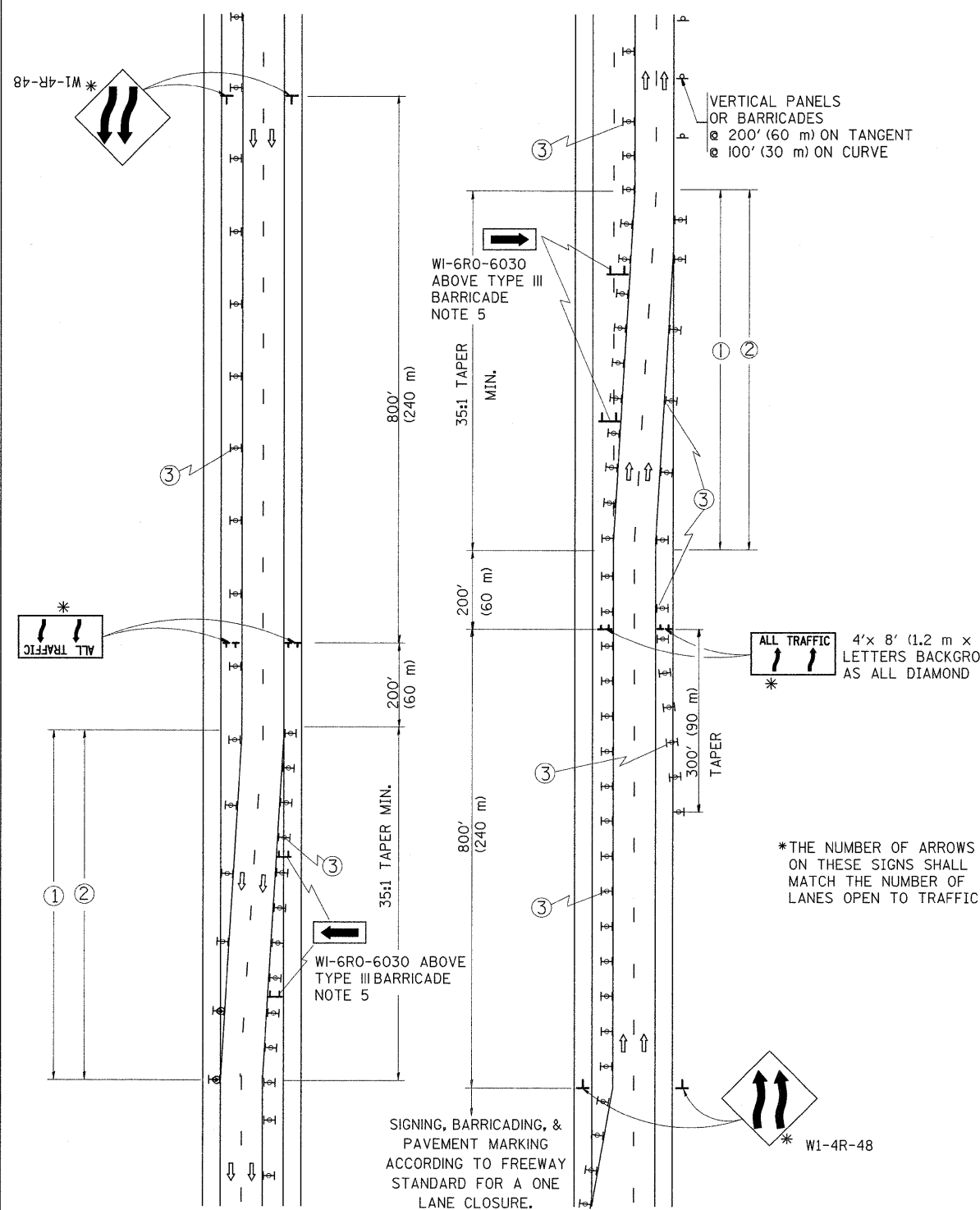
ALL DIMENSIONS ARE IN INCHES (MILLIMETERS) UNLESS OTHERWISE SHOWN.

| | | | | | | | | | | | |
|--|--------------------|-----------------------|-----------------------------|---|---|----------------------|-------------------------|--------------|--------------|---|--|
| FILE NAME = | USER NAME = mossse | DESIGNED - M. DE YONG | REVISED - R. SHAH 10-25-94 | STATE OF ILLINOIS DEPARTMENT OF TRANSPORTATION | BUTT JOINT AND HMA TAPER DETAILS | F.A. RTE. | SECTION | COUNTY | TOTAL SHEETS | SHEET NO. | |
| ct:\pwork\PWID01\MOSSSE\08104195\01st5.dgn | | DRAWN - | REVISED - A. ABBAS 03-21-97 | | | 90/94 | 2008-070 RS | COOK | 13 | 8 | |
| | | CHECKED - | REVISED - M. GOMEZ 04-06-01 | | | BD400-05 BD32 | | CONTRACT NO. | | | |
| | | DATE - 06-13-90 | REVISED - R. BORO 01-01-07 | | | SCALE: NONE | SHEET NO. 1 OF 1 SHEETS | STA. | TO STA. | FED. ROAD DIST. NO. 1 ILLINOIS FED. AID PROJECT | |

SINGLE LANE WEAVE



MULTI-LANE WEAVE



GENERAL NOTES

- ① EXISTING CONFLICTING PAVEMENT MARKING LINES SHALL BE REMOVED OR COVERED WITH BLACK TAPE. PAVEMENT MARKING REMOVAL OR BLACK TAPE SHALL NOT BE REQUIRED FOR LANE CLOSURES UNDER 24 HOURS IN DURATION.
- ② CONTINUOUS REFLECTIVE TEMPORARY PAVEMENT MARKING TAPE SHALL BE PLACED THROUGHOUT THE TAPER AND FOR 300' (90 m) ALONG SIDE THE WORK AREA WHERE THE CLOSURE TIME IS GREATER THAN FOURTEEN DAYS. THE LEFT EDGE LINE SHALL BE YELLOW AND THE RIGHT EDGE LINE SHALL BE WHITE. FOR MULTI-LANE WEAVE LANE LINES SHALL BE 10'-30' (3 m-9 m) SKIP DASH, WHITE.
- ③ PLASTIC DRUMS WITH STEADY BURN LIGHTS AT 50' (15 m) C-C SPACING IN TAPERS AND 100' (30 m) C-C SPACING IN TANGENTS.
- ④ ALL SIGNS SHALL BE POST MOUNTED IF THE CLOSURE TIME EXCEEDS FOUR DAYS.
- ⑤ IF A TYPE III BARRICADE WITH AN ATTACHED SIGN PANEL WHICH MEETS NCHRP 350 IS NOT AVAILABLE, THE SIGNS MAY BE MOUNTED ON NCHRP 350 TEMPORARY SIGN SUPPORTS DIRECTLY IN FRONT OF THE BARRICADE.
- ⑥ IF THE WIDTH OF OFFSET IS LESS THAN 6' THEN THE TYPE III BARRICADE WITH ATTACHED ARROW SIGN PANEL CAN BE ELIMINATED IN THE TAPER AREAS.

4'x 8' (1.2 m x 2.4 m); 1 (25) BORDER; 10 (250) CAPITAL LETTERS BACKGROUND SHEETING SHALL BE THE SAME AS ALL DIAMOND SHAPED CONSTRUCTION SIGNS.

*THE NUMBER OF ARROWS ON THESE SIGNS SHALL MATCH THE NUMBER OF LANES OPEN TO TRAFFIC

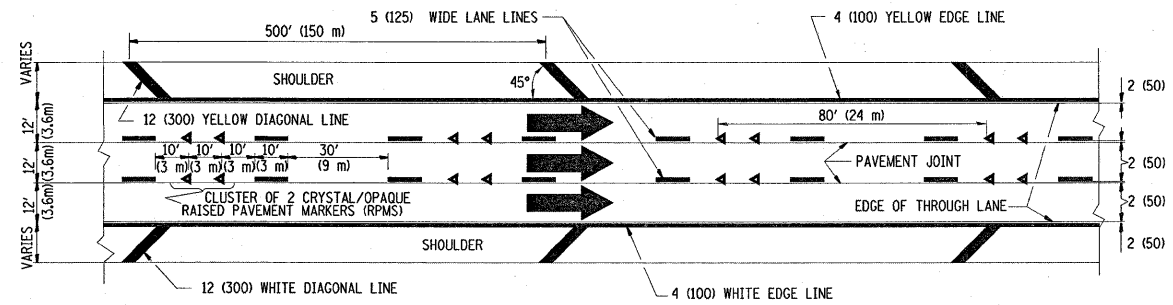
SYMBOLS

- ↑ DIRECTION OF TRAFFIC
- ▨ WORK AREA
- ┌ SIGN ON PORTABLE OR PERMANENT SUPPORT
- ⊞ TYPE II BARRICADE, DRUM OR VERTICAL BARRICADE WITH MONO-DIRECTIONAL STEADY BURNING LIGHT

ALL DIMENSIONS ARE IN INCHES (MILLIMETERS) UNLESS OTHERWISE SHOWN

| | | | | | | | | | | | |
|---------------------------------------|-----------------------------|----------------|---------------------|---|--|-----------------------|---------------------|-------------------------|-----------------|------------------|--|
| FILE NAME = | USER NAME = mosse | DESIGNED - DWS | REVISED - DWS 11-96 | STATE OF ILLINOIS DEPARTMENT OF TRANSPORTATION | TRAFFIC CONTROL DETAILS FOR FREEWAY SINGLE & MULTI-LANE WEAVE | F.A.I. RTE. 90/94 | SECTION 2008-070 RS | COUNTY COOK | TOTAL SHEETS 13 | SHEET NO. 9 | |
| c:\pwork\pwork\mosse\d0104195\dst.dgn | PLOT SCALE = 50,0000' / IN. | DRAWN - | REVISED - JAF 01-03 | | | TC-09 | | CONTRACT NO. | | | |
| | PLOT DATE = 1/23/2009 | CHECKED - | REVISED - JAF 02-06 | | | SCALE: NONE | | SHEET NO. 1 OF 1 SHEETS | | STA. TO STA. | |
| | | DATE - 02-87 | REVISED - SPB 01-07 | | | FED. ROAD DIST. NO. 1 | | ILLINOIS | | FED. AID PROJECT | |

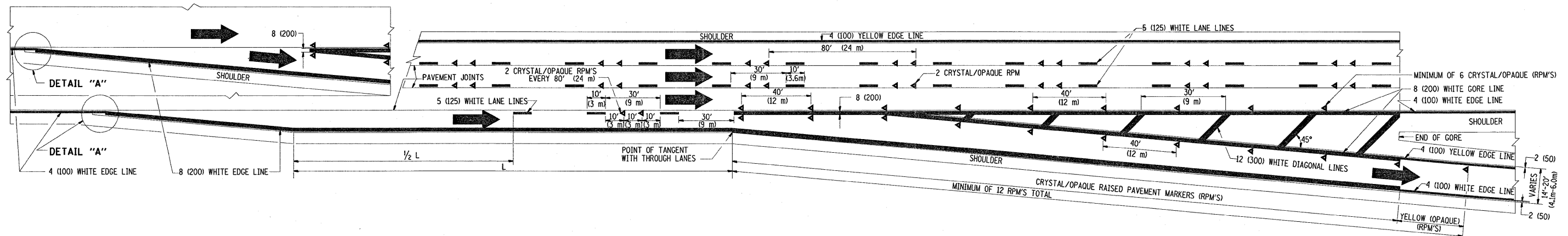
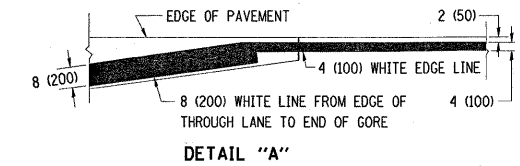
THE DIAGONAL LINES SHALL BE SPACED AT 40' (12 m) C-C ACROSS ALL STRUCTURES WHICH ARE 500' (150 m) OR LESS IN LENGTH
 THE DIAGONAL LINES ARE NOT REQUIRED ON SHOULDERS WHICH ARE 6' (1.8 m) OR LESS IN WIDTH



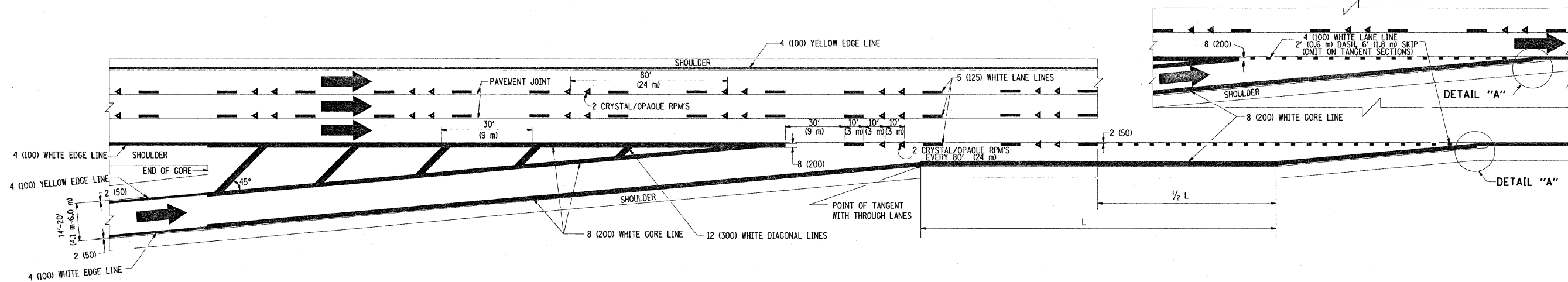
TYPICAL EDGE LINES & LANE LINES

NOTES:

1. THERMO PLASTIC PAVEMENT MARKING LINE SHALL BE USED FOR THE EDGE LINES, GORE LINES, AND DIAGONAL LINES ON BITUMINOUS PAVEMENT ONLY.
2. PREFORMED PLASTIC TYPE B PAVEMENT MARKING LINE SHALL BE USED FOR ALL LANE LINES ON BITUMINOUS PAVEMENT
3. POLYUREA PAVEMENT MARKING SHALL BE USED FOR ALL MARKINGS ON PCC

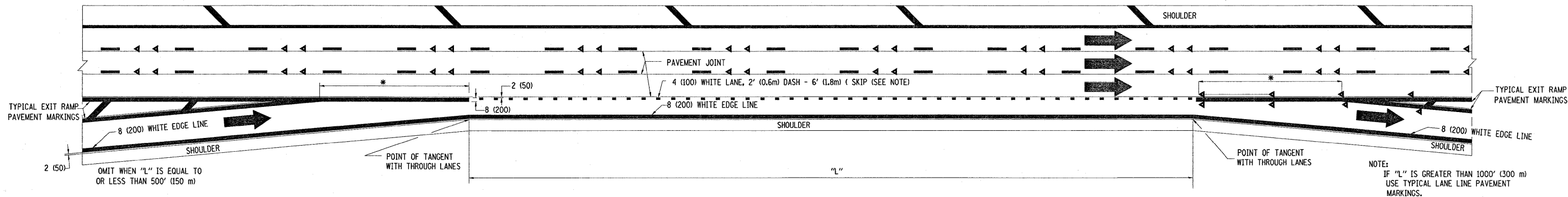


TYPICAL EXIT RAMP PAVEMENT MARKINGS

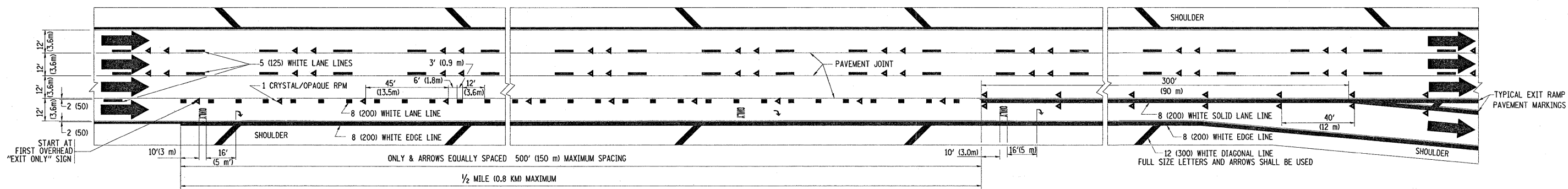


TYPICAL ENTRANCE RAMP PAVEMENT MARKINGS

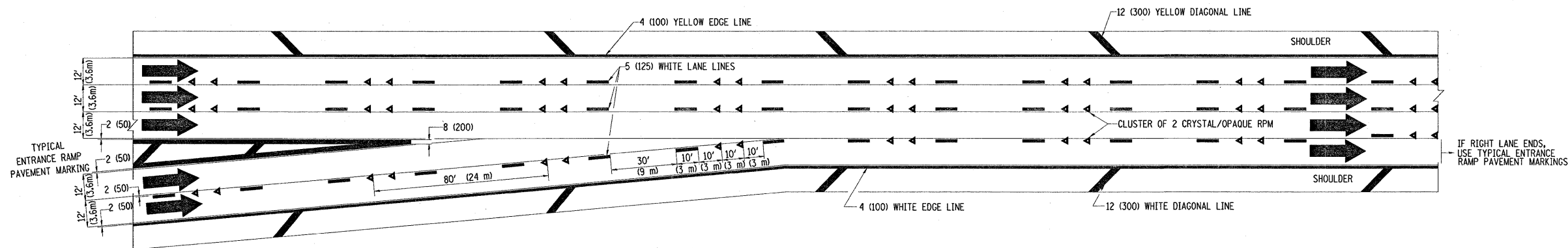
| | | | | | | | | | | | | |
|---|-----------------------------|-----------------------|------------------------|---|--|--------------------|-------------------------|--------------|---|--------------|--|--|
| FILE NAME = | USER NAME = mossse | DESIGNED - D.W.S. | REVISED - A.H. 03-96 | STATE OF ILLINOIS DEPARTMENT OF TRANSPORTATION | MULTI-LANE FREEWAY PAVEMENT MARKING DETAILS | F.A. RTE. 90/94 | SECTION 2008-070 RS | COUNTY COOK | TOTAL SHEETS 13 | SHEET NO. 10 | | |
| c:\pw_work\PWIDOT\MOSSSE\d0104195\Dist5.dgn | DRAWN - | REVISD - D.W.S. 07-96 | REVISED - J.A.F. 02-06 | | | SCALE: NONE | SHEET NO. 1 OF 2 SHEETS | STA. TO STA. | FED. ROAD DIST. NO. 1 ILLINOIS FED. AID PROJECT | | | |
| | PLOT SCALE = 50.0000' / IN. | CHECKED - | REVISED - S.P.B. 01-07 | | | CONTRACT NO. TC-12 | | | | | | |
| | PLOT DATE = 12/18/2008 | DATE - 01-90 | | | | | | | | | | |



TYPICAL ENTRANCE/EXIT RAMP COMBINATION PAVEMENT MARKINGS



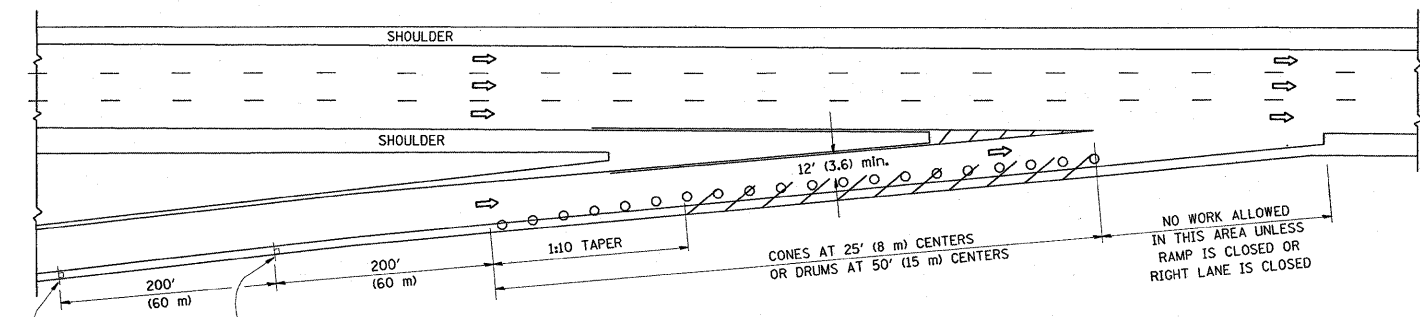
TYPICAL EXIT ONLY LANE PAVEMENT MARKINGS



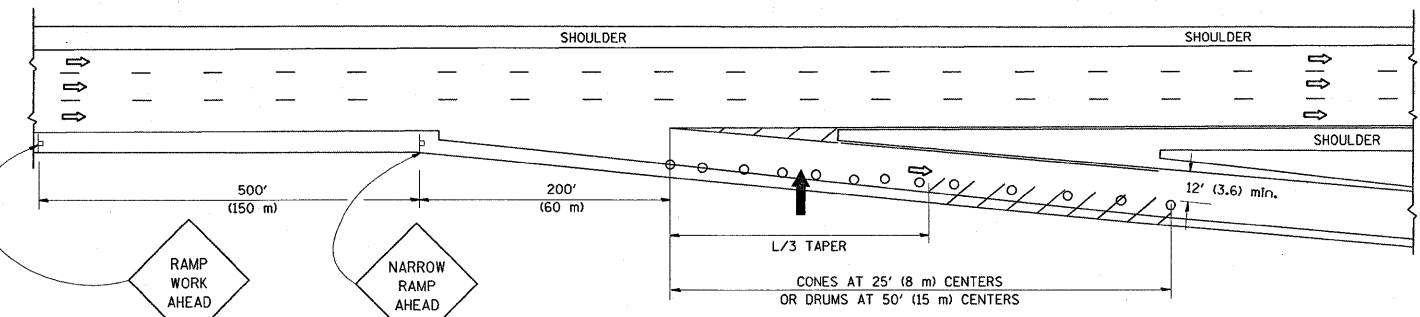
TYPICAL TWO LANE ENTRANCE RAMP PAVEMENT MARKINGS

| | | | | | | | | | | | |
|--|--------------------|-------------------|------------------------|---|--|-------------------------|-----------------|-----------------------|-------------|---------------------------|--------------|
| FILE NAME = | USER NAME = mossse | DESIGNED - D.W.S. | REVISED - A.H. 03-96 | STATE OF ILLINOIS DEPARTMENT OF TRANSPORTATION | MULTI-LANE FREEWAY PAVEMENT MARKING DETAILS | | F.A. RTE. 90/94 | SECTION 2008-070 RS | COUNTY COOK | TOTAL SHEETS 13 | SHEET NO. 11 |
| et\pw_work\PIWIDOT\MOSSSE\08104195\Dist5.dgn | | DRAWN - | REVISED - D.W.S. 07-96 | | SCALE: NONE | SHEET NO. 2 OF 2 SHEETS | STA. | TC-12 | | CONTRACT NO. | |
| | | CHECKED - | REVISED - J.A.F. 02-06 | | | | | FED. ROAD DIST. NO. 1 | | ILLINOIS FED. AID PROJECT | |
| | | DATE - 01-90 | REVISED - S.P.B. 01-07 | | | | | | | | |

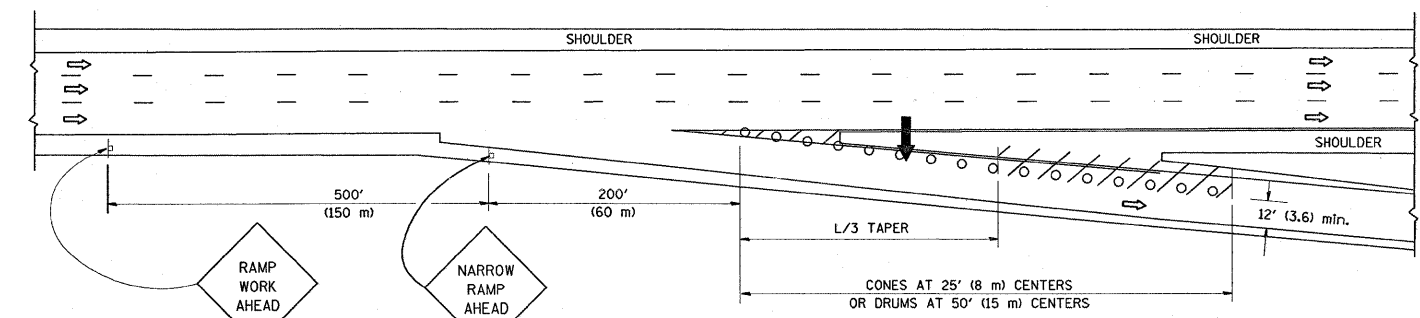
PARTIAL RAMP CLOSURE DETAILS



TYPICAL ENTRANCE RAMP



TYPICAL EXIT RAMP



TYPICAL EXIT RAMP

SYMBOLS

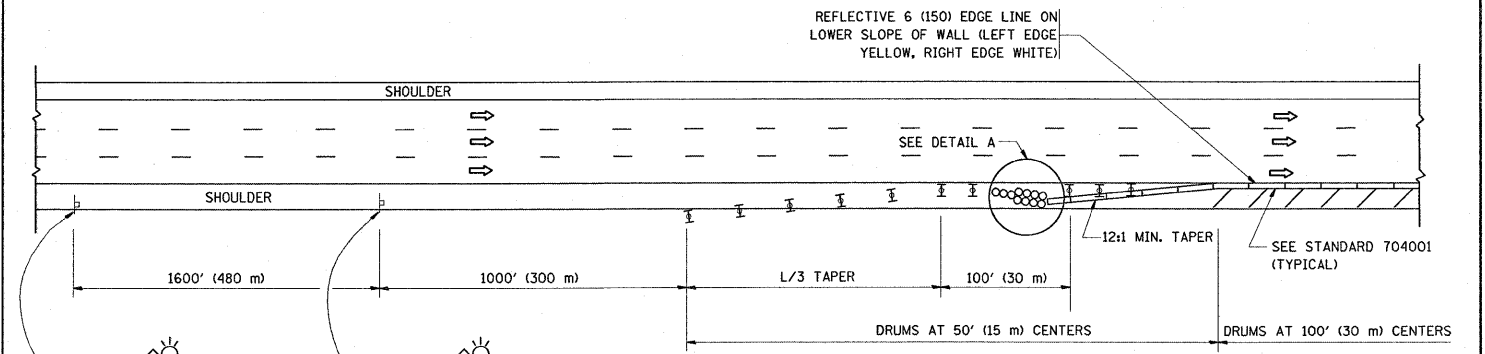
- ➔ ARROWBOARD
- ▨ WORK AREA
- ┌ SIGN ON PORTABLE OR PERMANENT SUPPORT
- FLAGGER WITH CONTROL SIGN
- ⊥ TYPE II BARRICADE, DRUM OR VERTICAL BARRICADE WITH STEADY BURN MONO-DIRECTIONAL LIGHT
- CONE, DRUM OR BARRICADE

GENERAL NOTES

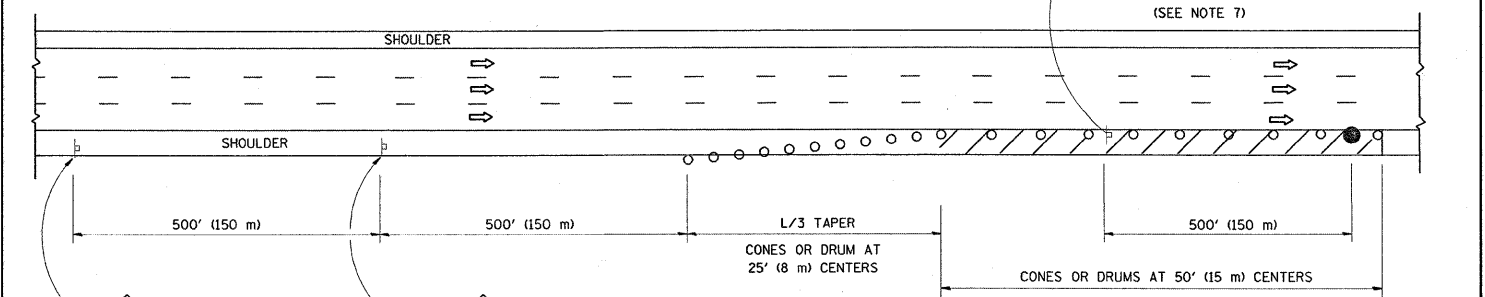
1. THE "L" DISTANCE EQUALS:

| | |
|------------------------------|--|
| SPEED LIMIT | FORMULAS |
| 45 mph (80 km/h) OR GREATER: | METRIC $L=0.65(W)(S)$ ENGLISH $L=(W)(S)$ |
| | W = WIDTH OF OFFSET IN FEET (METERS) |
| | S = NORMAL POSTED SPEED MPH (KM/H) |
2. PLASTIC DRUMS WITH HIGH PERFORMANCE REFLECTIVE SHEETING AND STEADY BURNING LIGHTS ARE REQUIRED FOR ALL NIGHTTIME CLOSURES.
3. ALL SIGNS SHALL BE POST MOUNTED IF THE CLOSURE TIME EXCEEDS FOUR DAYS.
4. FLASHING LIGHTS SHALL BE USED DURING THE HOURS OF DARKNESS AND SHALL BE INSTALLED ABOVE THE FIRST TWO SETS OF SIGNS.

SHOULDER CLOSURE DETAILS



PERMANENT SHOULDER CLOSURE



DAYTIME SHOULDER CLOSURE

THIS DETAIL IS USED WHERE:
 1. VEHICLES, EQUIPMENT, WORKERS OR THEIR ACTIVITIES ENCROACH IN AN AREA CLOSER THAN 15' (4.5 m) TO THE EDGE OF PAVEMENT FOR A PERIOD IN EXCESS OF 15 MINUTES.

ARRAY DESIGN PER MANUFACTURER TO BE NCHRP 350 COMPLIANT FOR POSTED SPEED.

DETAIL "A"
 IMPACT ATTENUATOR, TEMPORARY
 (SEE NOTE 5)

ALL DIMENSIONS ARE IN INCHES (MILLIMETERS) UNLESS OTHERWISE SHOWN.

| | | | | | | | | | | | |
|-------------|--------------------|----------------|------------------------|---|--|--|-------------|---|--------------|-----------|--|
| FILE NAME = | USER NAME = mossse | DESIGNED - | REVISED - J.A.F. 12-02 | STATE OF ILLINOIS DEPARTMENT OF TRANSPORTATION | TRAFFIC CONTROL DETAILS FOR FREEWAY SHOULDER CLOSURES AND PARTIAL RAMP CLOSURES | F.A. RTE. | SECTION | COUNTY | TOTAL SHEETS | SHEET NO. | |
| | | DRAWN - D.W.S. | REVISED - 04-03 | | | 90/94 | 2008-070 RS | COOK | 13 | 13 | |
| | | CHECKED - | REVISED - J.A.F. 12-06 | | | TC-17 | | CONTRACT NO. | | | |
| | | DATE - 11-96 | REVISED - S.P.B. 01-07 | | | SCALE: NONE SHEET NO. 1 OF 1 SHEETS STA. TO STA. | | FED. ROAD DIST. NO. 1 (ILLINOIS) FED. AID PROJECT | | | |