

STATE OF ILLINOIS
DEPARTMENT OF TRANSPORTATION
DIVISION OF HIGHWAYS

**PROPOSED
HIGHWAY PLANS**

F.A.I. 290 / F.A.P. 342 (I-290 / IL 53)
SECTION 2008-072 GRR
WOODFIELD ROAD TO IL 62 (ALGONQUIN ROAD)
GUARDRAIL
PROJECT: HSIP-290-3(062)068
COOK COUNTY
C-91-224-09

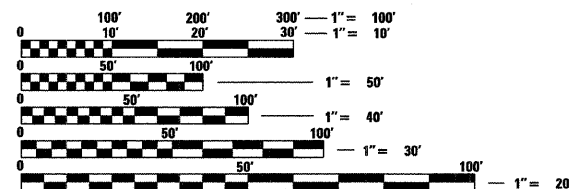
F.A.I. RTE.	SECTION	COUNTY	TOTAL SHEETS	SHEET NO.
290	2008-072 GRR	COOK	10	1
FED. ROAD DIST. NO. 1	ILLINOIS	CONTRACT NO.	60F73	

FOR INDEX OF SHEETS, SEE SHEET NO. 2

THIS IMPROVEMENT IS LOCATED
WITHIN THE VILLAGES OF SCHAUMBURG
AND ROLLING MEADOWS

TRAFFIC DATA

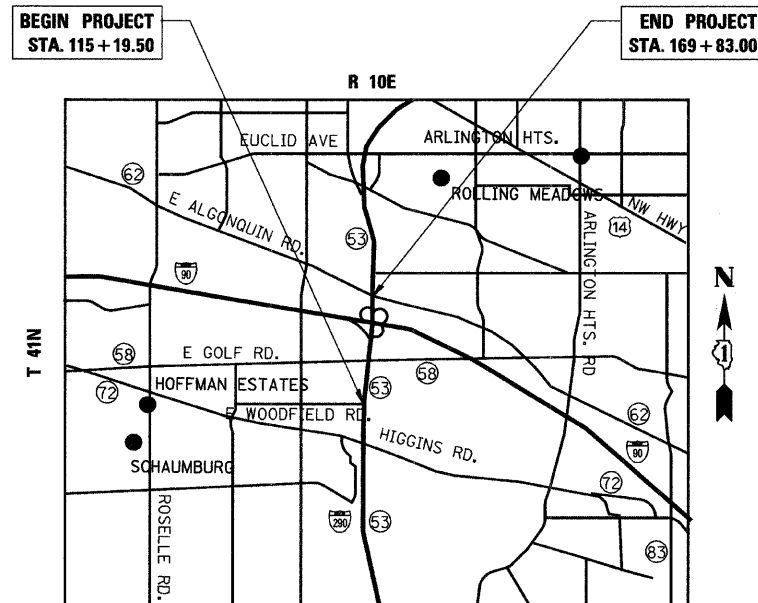
2005 ADT - 177,500
POSTED SPEED LIMIT - 55 MPH



FULL SIZE PLANS HAVE BEEN PREPARED USING STANDARD ENGINEERING SCALES. REDUCED SIZED PLANS WILL NOT CONFORM TO STANDARD SCALES. IN MAKING MEASUREMENTS ON REDUCED PLANS, THE ABOVE SCALES MAY BE USED.

J.U.L.I.E.
JOINT UTILITY LOCATION INFORMATION FOR EXCAVATION
1-800-892-0123
OR 811

Ciorba Group, Inc.
DESIGN FIRM
REGISTRATION NUMBER
184-001016
CONSULTING ENGINEERS
SUITE 402, 5507 NORTH CUMBERLAND AVE.
CHICAGO, ILLINOIS 60656 ☎ (773) 775-4009



SCHAUMBURG AND ELK GROVE TOWNSHIPS
LOCATION MAP
1" = 5000'
GROSS AND NET LENGTH OF PROJECT = 5,463.5 FT = 1.03 MI.



LOCATION OF SECTION INDICATED THIS: - [black rectangle]

STATE OF ILLINOIS
DEPARTMENT OF TRANSPORTATION
DIVISION OF HIGHWAYS
SUBMITTED December 18, 2008
Diana M. O'Keefe, DEPUTY DIRECTOR OF HIGHWAYS, REGION ENGINEER
January 30, 2009
Charles J. Ingersoll, ENGINEER OF DESIGN AND ENVIRONMENT
January 30, 2009
Christine M. Reed, DIRECTOR OF HIGHWAYS, CHIEF ENGINEER

MATTHEW J. LEHMAN
062-057159
LICENSED PROFESSIONAL ENGINEER OF ILLINOIS
DATE: 12/17/2008
SEAL EXPIRES: 11/30/2009

**PRINTED BY THE AUTHORITY
OF THE STATE OF ILLINOIS**

DISTRICT 1 DESIGN PLAN PREPARATION ENGINEER: K. ENG (847)705-4247

CONTRACT NO. 60F73

INDEX OF SHEETS

SHEET NO DESCRIPTION

- 1 TITLE SHEET
- 2 INDEX OF SHEETS, STATE STANDARDS AND GENERAL NOTES
- 3 SUMMARY OF QUANTITIES
- 4 TYPICAL SECTIONS
- 5-7 ROADWAY PLANS
- 8 FREEWAY ENTRANCE AND EXIT RAMP CLOSURE DETAILS (TC-8)
- 9 TRAFFIC CONTROL DETAILS FOR FREEWAY SINGLE & MULTI-LANE WEAVE (TC-9)
- 10 TRAFFIC CONTROL DETAILS FOR FREEWAY SHOULDER CLOSURES AND PARTIAL RAMP CLOSURES (TC-17)

STATE STANDARDS

- 000001-05 STANDARD SYMBOLS, ABBREVIATIONS, AND PATTERNS
- 630001-08 STEEL PLATE BEAM GUARDRAIL
- 631011-06 TRAFFIC BARRIER TERMINAL, TYPE 2
- 631026-05 TRAFFIC BARRIER TERMINAL, TYPE 5
- 631031-07 TRAFFIC BARRIER TERMINAL, TYPE 6
- 635006-03 REFLECTOR AND TERMINAL MARKER PLACEMENT
- 635011-02 REFLECTOR MARKER AND MOUNTING DETAILS
- 701400-03 APPROACH TO LANE CLOSURE, FREEWAY/EXPRESSWAY
- 701401-05 LANE CLOSURE, FREEWAY/EXPRESSWAY
- 701411-05 LANE CLOSURE, MULTILANE, AT ENTRANCE OR EXIT RAMP, FOR SPEED > 45 MPH
- 701426-03 LANE CLOSURE, MULTILANE, INTERMITTENT OR MOVING OPER., FOR SPEEDS > 45 MPH
- 701446-01 TWO LANE CLOSURE FREEWAY/EXPRESSWAY
- 701901-01 TRAFFIC CONTROL DEVICES

GENERAL NOTES

1. BEFORE STARTING ANY EXCAVATION, THE CONTRACTOR SHALL CALL "JULIE" AT 800-892-0123 OR 811 FOR FIELD LOCATIONS OF BURIED ELECTRIC, TELEPHONE, AND GAS FACILITIES. (48 HOUR NOTIFICATIONS IS REQUIRED)
2. THE CONTRACTOR SHALL COORDINATE CONSTRUCTION ACTIVITIES WITH UTILITY COMPANIES AND THE VILLAGES OF SCHAUMBURG AND ROLLING MEADOWS.
3. THE CONTRACTOR WILL NOT BE ALLOWED TO SET UP A YARD OR FIELD OFFICE ON STATE PROPERTY WITHOUT WRITTEN PERMISSION FROM THE DEPARTMENT.
4. WHEN ARTIFICIAL LIGHTING IS USED IN NIGHT OPERATIONS THE CONTRACTOR SHALL EXERCISE THE UTMOST PRECAUTIONS IN PREVENTING ADVERSE VISIBILITY TO THE MOTORING PUBLIC AND ADJOINING RESIDENTIAL AREAS.
5. BARRICADES: THE CONTRACTOR SHALL PROVIDE AND INSTALL TWO (2) WEIGHTED SANDBAGS ON EACH TYPE I OR TYPE II BARRICADE USED - ONE (1) WEIGHTED SANDBAG ACROSS EACH BOTTOM RAIL.
6. THE CONTRACTOR SHALL CONTACT THE DISTRICT ONE ARTERIAL TRAFFIC CONTROL SUPERVISOR A MINIMUM OF 72 HOURS PRIOR TO BEGINNING WORK.

7. AT THE END OF THE WORK DAY, THE CONTRACTOR SHALL HAVE ALL ERECTED STEEL PLATE BEAM GUARDRAIL ATTACHED TO THE EXISTING GUARDRAIL. NO GAPS OR OPENINGS AT THE END OF THE WORK DAY WILL BE ALLOWED WHEN REPLACING THE EXISTING GUARDRAIL. THIS WORK SHALL NOT BE PAID FOR SEPARATELY, BUT SHALL BE CONSIDERED INCLUDED IN THE COST OF THE PROPOSED GUARDRAIL WORK.

FILE NAME = N:\PROJ\3329\3329_47\Design\Proposed\Plan\3329_47-85-General Notes.dgn



Ciorba Group, Inc.
CONSULTING ENGINEERS
5507 North Cumberland Avenue, Suite 402
Chicago, Illinois 60656
Tel. 773.775.4000 Fax 773.775.4014

USER NAME = mreedy	DESIGNED - RJR	REVISED -
	DRAWN - RJR	REVISED -
PLOT SCALE = 1:8000' / IN.	CHECKED - WBL	REVISED -
PLOT DATE = 12/23/2008	DATE - 12/5/2008	REVISED -

**STATE OF ILLINOIS
DEPARTMENT OF TRANSPORTATION**

**FAI 290 / FAP 342 (I-290 / IL 53)
WOODFIELD ROAD TO IL 62 (ALGONQUIN RD)
INDEX OF SHEETS, STATE STANDARDS & GENERAL NOTES**

F.A.I. RTE.	SECTION	COUNTY	TOTAL SHEETS	SHEET NO.
290	2008-072 GRR	COOK	10	2
FED. ROAD DIST. NO. 1 ILLINOIS FED. AID PROJECT			CONTRACT NO. 60F73	

SCALE: SHEET NO. OF SHEETS STA. TO STA.

SUMMARY OF QUANTITIES			URBAN TOTAL QUANTITY 90% FED. 10% STATE	CONSTRUCTION TYPE CODE
CODE NO.	DESCRIPTION	UNIT		GUARDRAIL SFTY-3J
20200100	EARTH EXCAVATION	CU YD	750	750
20201006	GRADING AND SHAPING SHOULDERS	UNIT	1	1
48101500	AGGREGATE SHOULDERS, TYPE B 6"	SQ YD	4,400	4,400
63000000	STEEL PLATE BEAM GUARD RAIL, TYPE A	FOOT	1,350	1,350
63000015	STEEL PLATE BEAM GUARD RAIL, TYPE D	FOOT	12,325	12,325
63100045	TRAFFIC BARRIER TERMINAL, TYPE 2	EACH	1	1
63100070	TRAFFIC BARRIER TERMINAL, TYPE 5	EACH	3	3
63100085	TRAFFIC BARRIER TERMINAL, TYPE 6	EACH	4	4
63200600	STEEL PLATE BEAM GUARD RAIL REMOVAL, SINGLE RAIL	FOOT	1,250	1,250
63200700	STEEL PLATE BEAM GUARD RAIL REMOVAL, DOUBLE RAIL	FOOT	12,400	12,400
67000400	ENGINEER'S FIELD OFFICE, TYPE A	CAL MO	3	3
67100100	MOBILIZATION	L SUM	1	1
70200410	GUARDRAIL MARKERS, TYPE A	EACH	160	160
X7011015	TRAFFIC CONTROL AND PROTECTION (EXPRESSWAYS)	L SUM	1	1
X7015005	CHANGEABLE MESSAGE SIGN	CAL DA	90	90
Z0029999	IMPACT ATTENUATOR REMOVAL	EACH	1	1
Z0030030	IMPACT ATTENUATORS (FULLY REDIRECTIVE, NARROW), TEST LEVEL 3	EACH	1	1

FILE NAME = I:\PROJ\329\329\329\47\Urban\Propose\Plan\329_47_05-500.dgn



Ciorba Group, Inc.
CONSULTING ENGINEERS
5507 North Cumberland Avenue, Suite 402
Chicago, Illinois 60656
Tel. 773.775.4009 Fax 773.775.4014

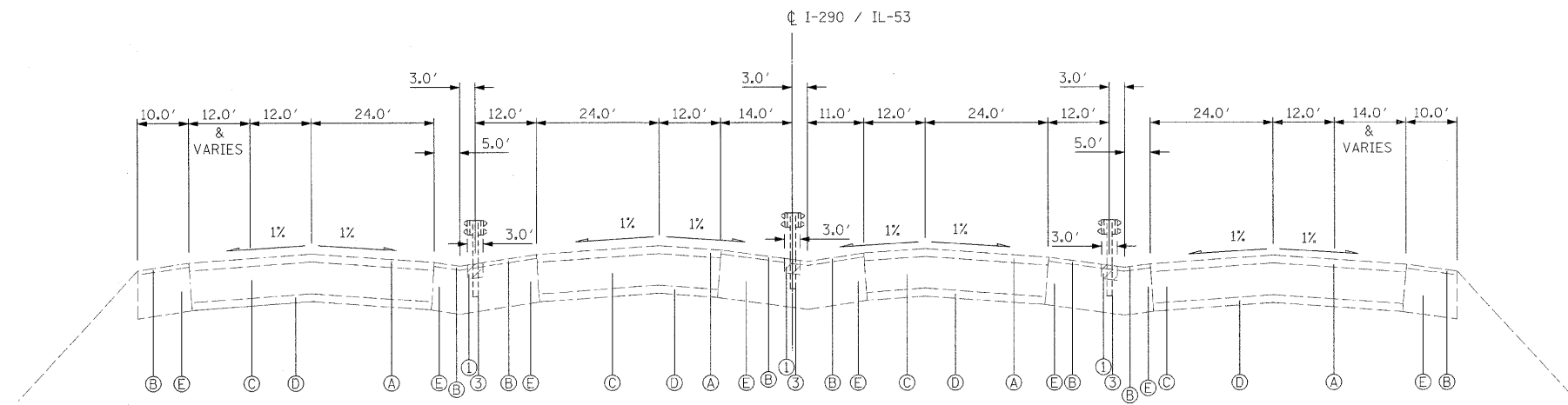
USER NAME = mready	DESIGNED - RJR	REVISED -
	DRAWN - RJR	REVISED -
PLOT SCALE = 1:8000 "/> <td>CHECKED - WBL</td> <td>REVISED -</td>	CHECKED - WBL	REVISED -
PLOT DATE = 12/19/2008	DATE - 12/5/2008	REVISED -

**STATE OF ILLINOIS
DEPARTMENT OF TRANSPORTATION**

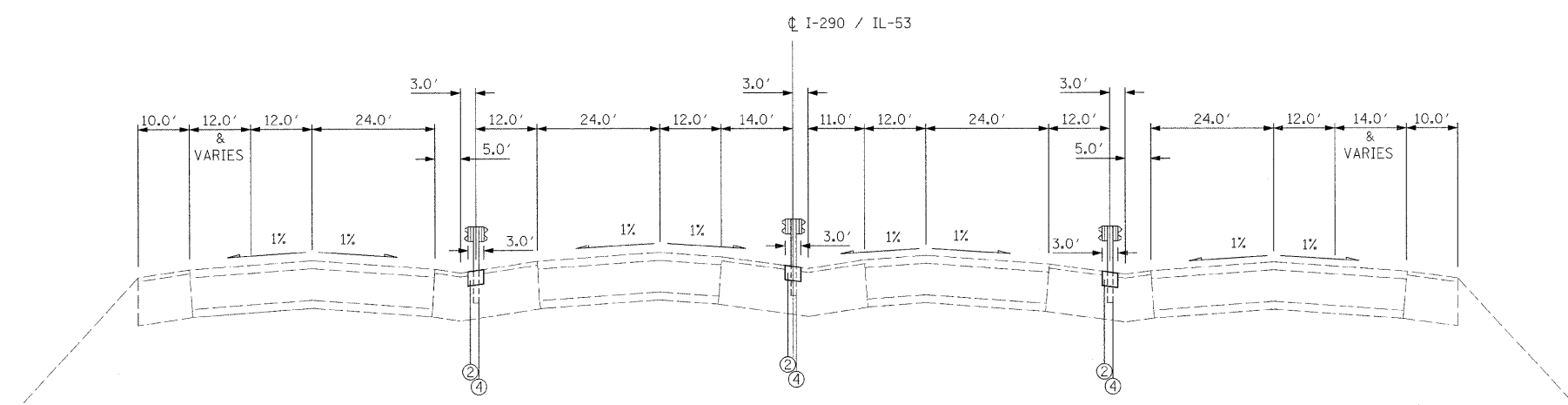
**FAI 290 / FAP 342 (I-290 / IL 53)
WOODFIELD ROAD TO IL 62 (ALGONQUIN ROAD)
SUMMARY OF QUANTITIES**

SCALE: SHEET NO. OF SHEETS STA. TO STA.

F.A.I. RTE. 290	SECTION 2008-072 GRR	COUNTY COOK	TOTAL SHEETS 10	SHEET NO. 3
CONTRACT NO. 60F73				Rev.
FED. ROAD DIST. NO. 1 ILLINOIS FED. AID PROJECT				



EXISTING TYPICAL SECTION
STA. 115+19.50 TO 169+83.00



PROPOSED TYPICAL SECTION
STA. 115+19.50 TO 169+83.00

EXISTING LEGEND:

- (A) HOT-MIX ASPHALT SURFACE AND BINDER COURSE, 3 1/2"
- (B) HOT-MIX ASPHALT SURFACE COURSE, 1 3/4"
- (C) CONTINUOUS REINFORCED CONCRETE PAVEMENT, 9"
- (D) AGGREGATE SUBGRADE
- (E) HOT-MIX ASPHALT SHOULDER, 12"

PROPOSED LEGEND:

- (1) EARTH EXCAVATION (6")
- (2) AGGREGATE SHOULDERS, TYPE B 6"
- (3) GUARDRAIL REMOVAL
- (4) STEEL PLATE BEAM GUARD RAIL, TYPE D

FILE NAME = c:\puro\3225\3225-47\design\proposed\plan\3229-47-04-typical-sections.dgn

Ciorba Group, Inc.
CONSULTING ENGINEERS
5507 North Cumberland Avenue, Suite 402
Chicago, Illinois 60656
Tel. 773.775.4008 Fax 773.775.4014

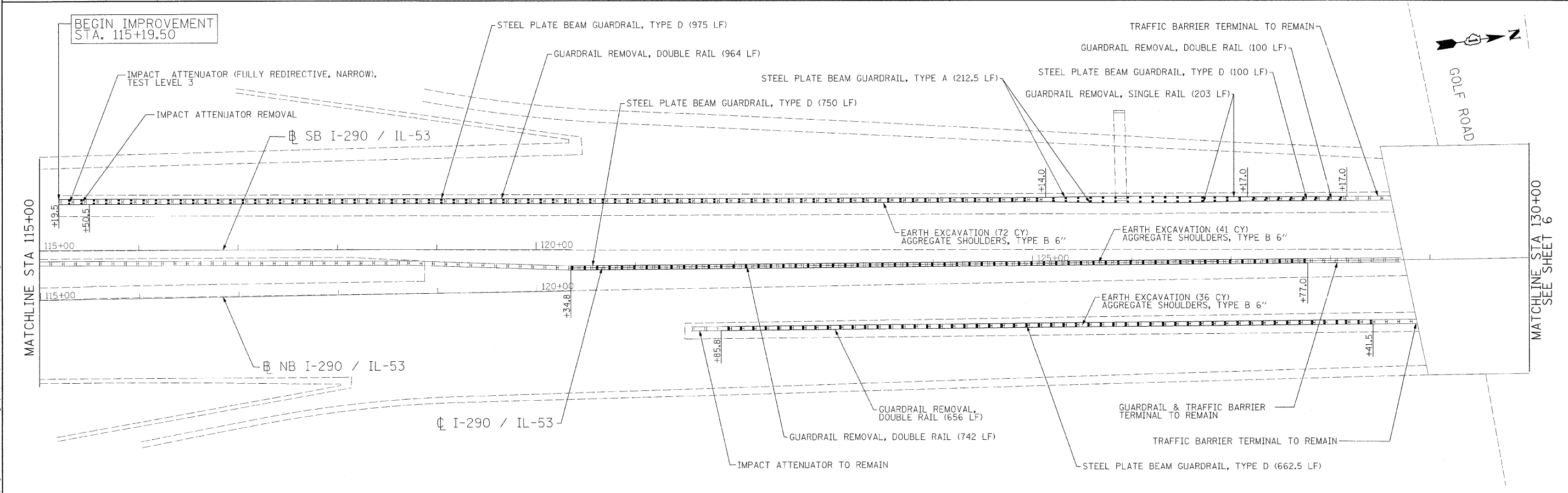
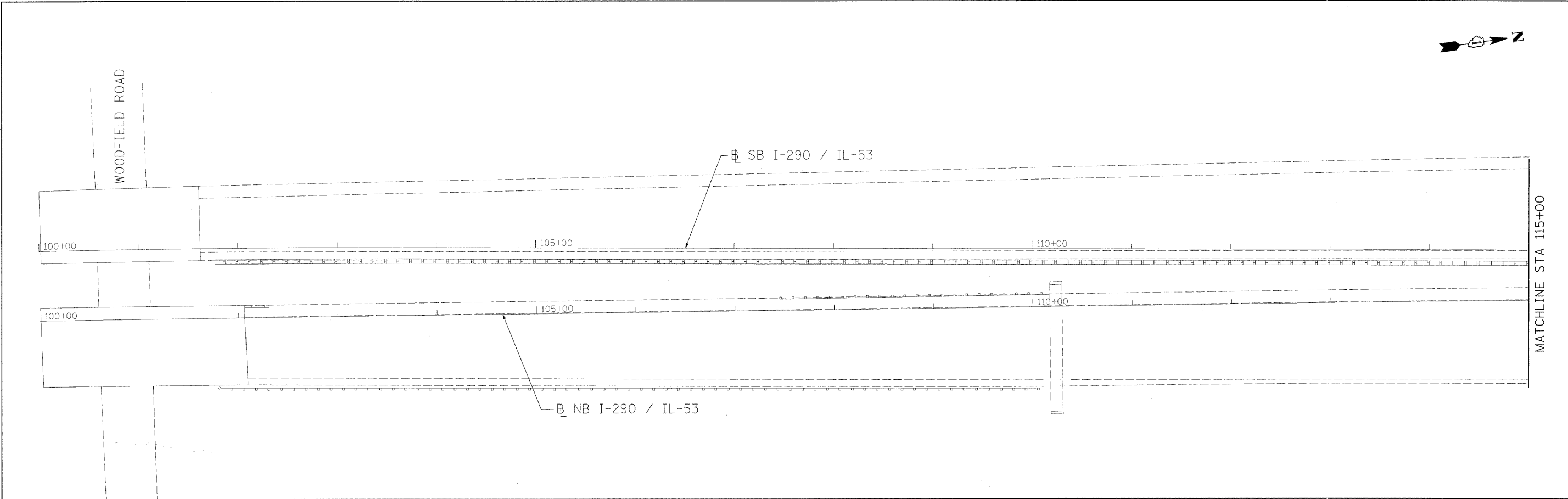
USER NAME = mreedy	DESIGNED - RJR	REVISED -
PLOT SCALE = 5.0000' / IN.	DRAWN - RJR	REVISED -
PLOT DATE = 12/19/2008	CHECKED - WBL	REVISED -
	DATE - 12/5/2008	REVISED -

**STATE OF ILLINOIS
DEPARTMENT OF TRANSPORTATION**

**F.A.I. 290 / F.A.P. 342 (I-290 / IL 53)
WOODFIELD ROAD TO ALGONQUIN ROAD (IL 62)
TYPICAL SECTIONS**

F.A.I. RTE. 290	SECTION 2008-072 GRR	COUNTY COOK	TOTAL SHEETS 10	SHEET NO. 4
FED. ROAD DIST. NO. 1 ILLINOIS FED. AID PROJECT			CONTRACT NO. 60F73	

SCALE: N.T.S. SHEET NO. OF SHEETS STA. TO STA.



FILE NAME: c:\bnu\329\329\47\design\proposals\plan\329_47_05-Proposed.dwg

Ciorba Group, Inc.
 CONSULTING ENGINEERS
 5507 North Cumberland Avenue, Suite 402
 Chicago, Illinois 60656
 Tel. 773.775.4009 Fax 773.775.4014

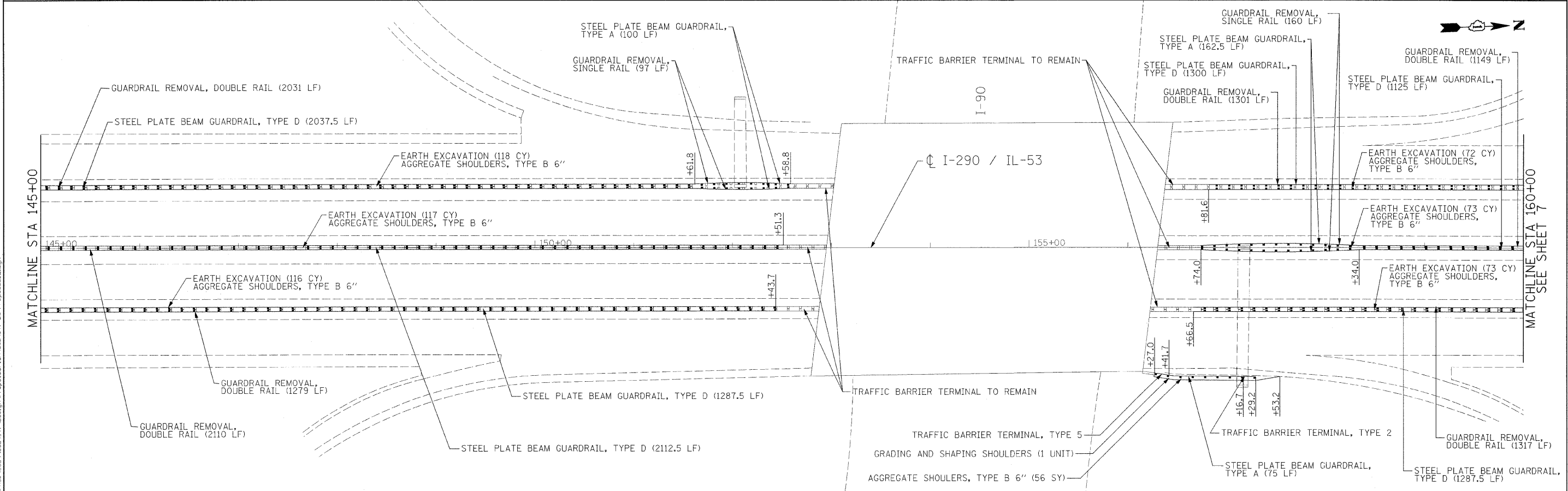
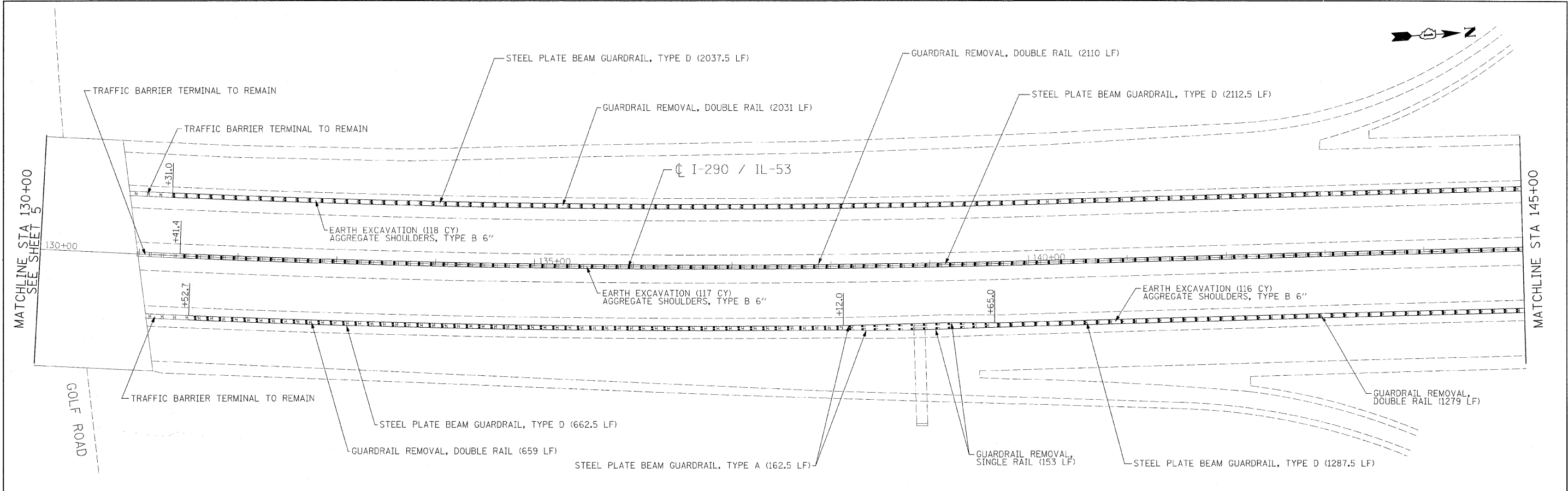
USER NAME = mrcacy	DESIGNED - MWR	REVISED -
PLOT SCALE = 500.0000' / IN.	DRAWN - MWR	REVISED -
PLOT DATE = 12/19/2008	CHECKED - WBL	REVISED -
	DATE - 12/5/2008	REVISED -

**STATE OF ILLINOIS
 DEPARTMENT OF TRANSPORTATION**

FAI 290 / FAP 342 (I-290 / IL 53) WOODFIELD ROAD TO IL 62 (ALGONQUIN RD) ROADWAY PLAN			
SCALE:	SHEET NO. OF SHEETS	STA. TO STA.	

F.A.I. RTE. 290	SECTION 2008-072 GRR	COUNTY COOK	TOTAL SHEETS 10	SHEET NO. 5
FED. ROAD DIST. NO. 1 ILLINOIS FED. AID PROJECT				

CONTRACT NO. 60F73



Ciorba Group, Inc.
 CONSULTING ENGINEERS
 5507 North Cumberland Avenue, Suite 402
 Chicago, Illinois 60658
 Tel. 773.775.4009 Fax 773.775.4014

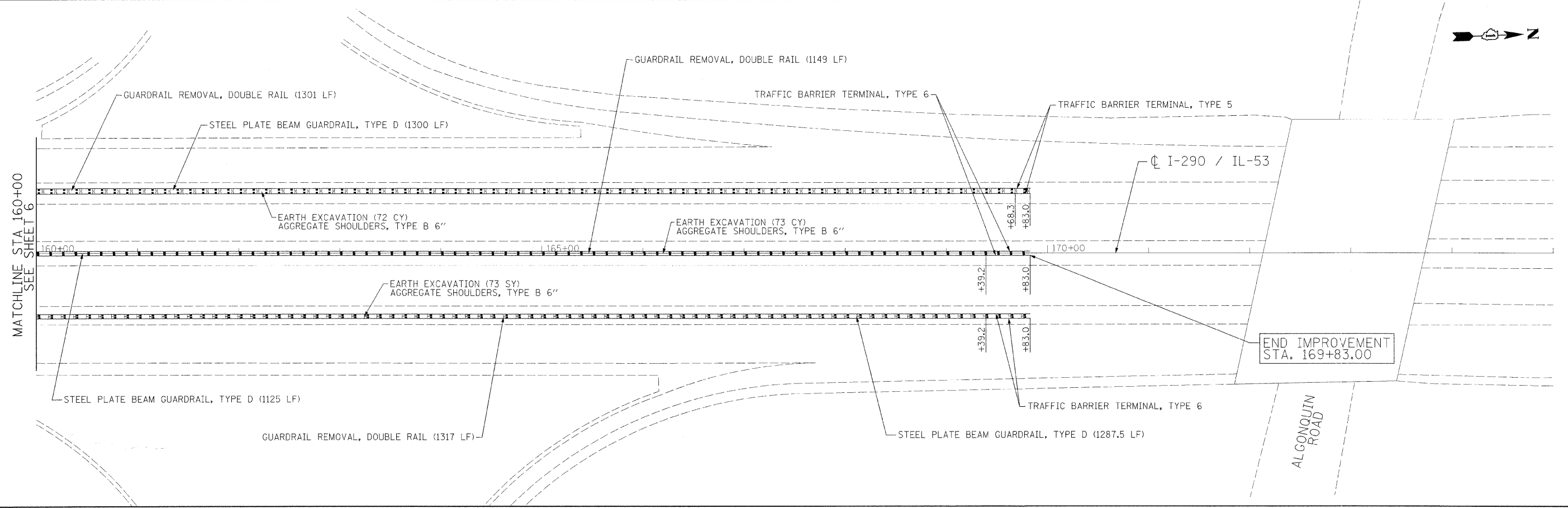
USER NAME = mready	DESIGNED - MWR	REVISED -
PLCT SCALE = 50.0000' / IN.	DRAWN - MWR	REVISED -
PLCT DATE = 12/22/2008	CHECKED - WBL	REVISED -
	DATE - 12/5/2008	REVISED -

**STATE OF ILLINOIS
 DEPARTMENT OF TRANSPORTATION**

**FAI 290 / FAP 342 (I-290 / IL 53)
 WOODFIELD ROAD TO IL 62 (ALGONQUIN RD)
 ROADWAY PLAN**

F.A.T. R'T.E. 290	SECTION 2008-072 GRR	COUNTY COOK	TOTAL SHEETS 10	SHEET NO. 6
FED. ROAD DIST. NO. 1 ILLINOIS FED. AID PROJECT			CONTRACT NO. 60F73	

FILE NAME = N:\PFD\3329\3329_47\Design\Figures\Plan_3329_47_96-F-0900002.dgn



MATCHLINE STA. 160+00
SEE SHEET 6

END IMPROVEMENT
STA. 169+83.00

ALGONQUIN
ROAD

FILE NAME = c:\pva\3225\3225_47\rdwg\pva\pva\pva\3225_47\RD\RD\pva\pva\pva\3225_47.dgn

Ciorba Group, Inc.
CONSULTING ENGINEERS
6507 North Cumberland Avenue, Suite 402
Chicago, Illinois 60660
Tel. 773.775.4009 Fax 773.775.4014

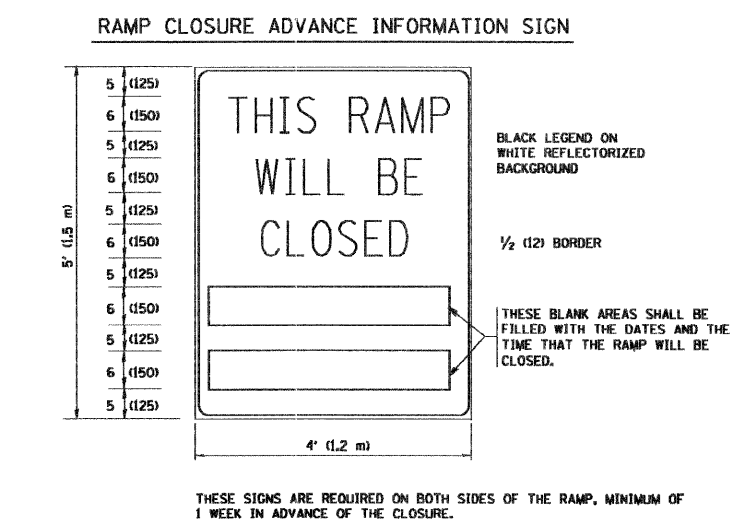
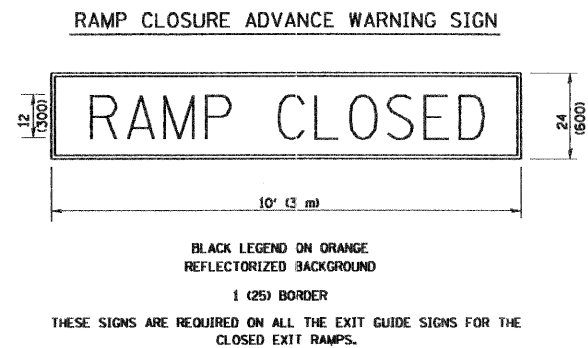
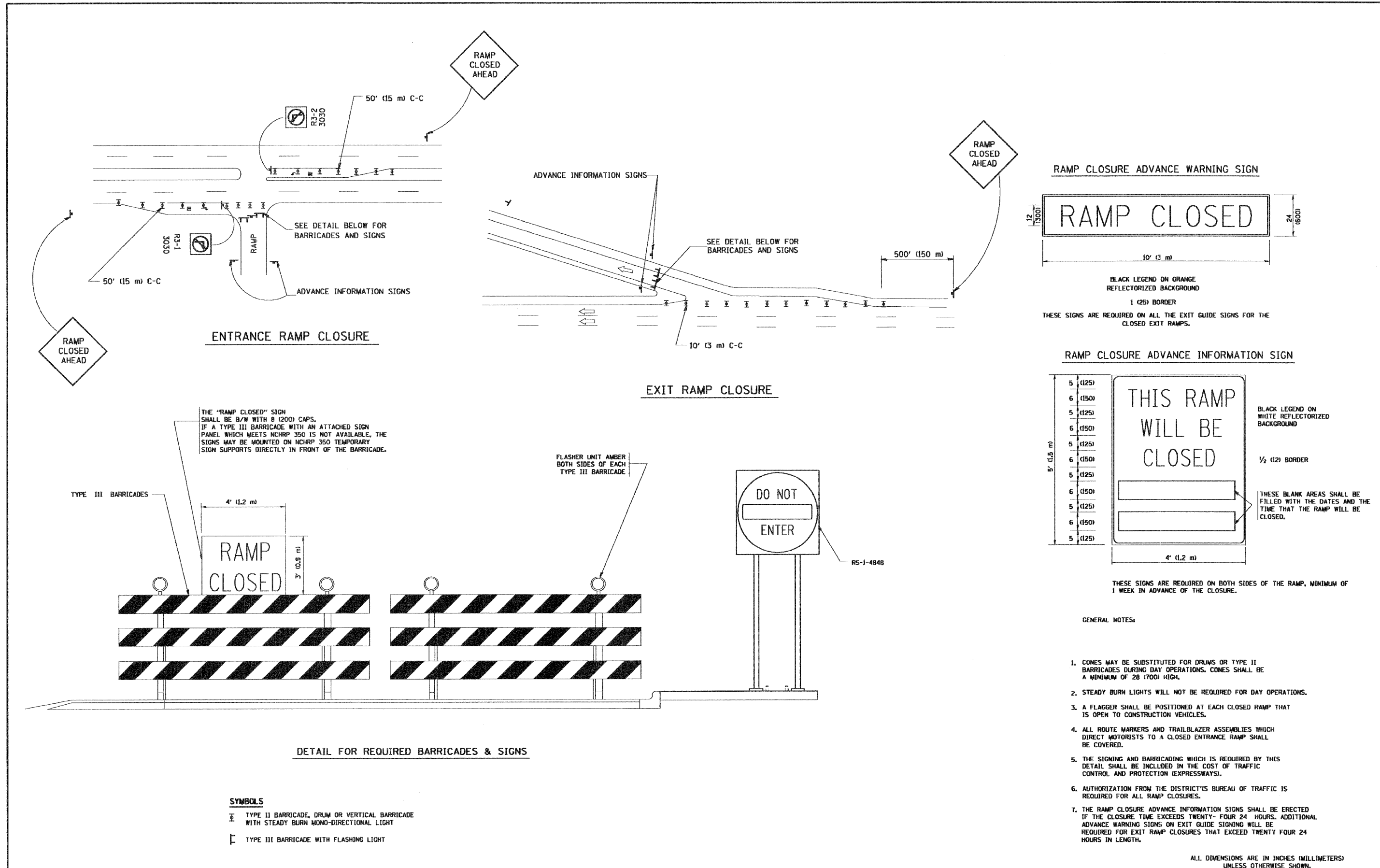
USER NAME = mready	DESIGNED - MWR	REVISED -
PLOT SCALE = 50.2000' / IN.	DRAWN MWR	REVISED -
PLOT DATE = 12/19/2008	CHECKED - WBL	REVISED -
	DATE - 12/5/2008	REVISED -

**STATE OF ILLINOIS
DEPARTMENT OF TRANSPORTATION**

**FAI 290 / FAP 342 (I-290 / IL 53)
WOODFIELD ROAD TO IL 62 (ALGONQUIN RD)
ROADWAY PLAN**

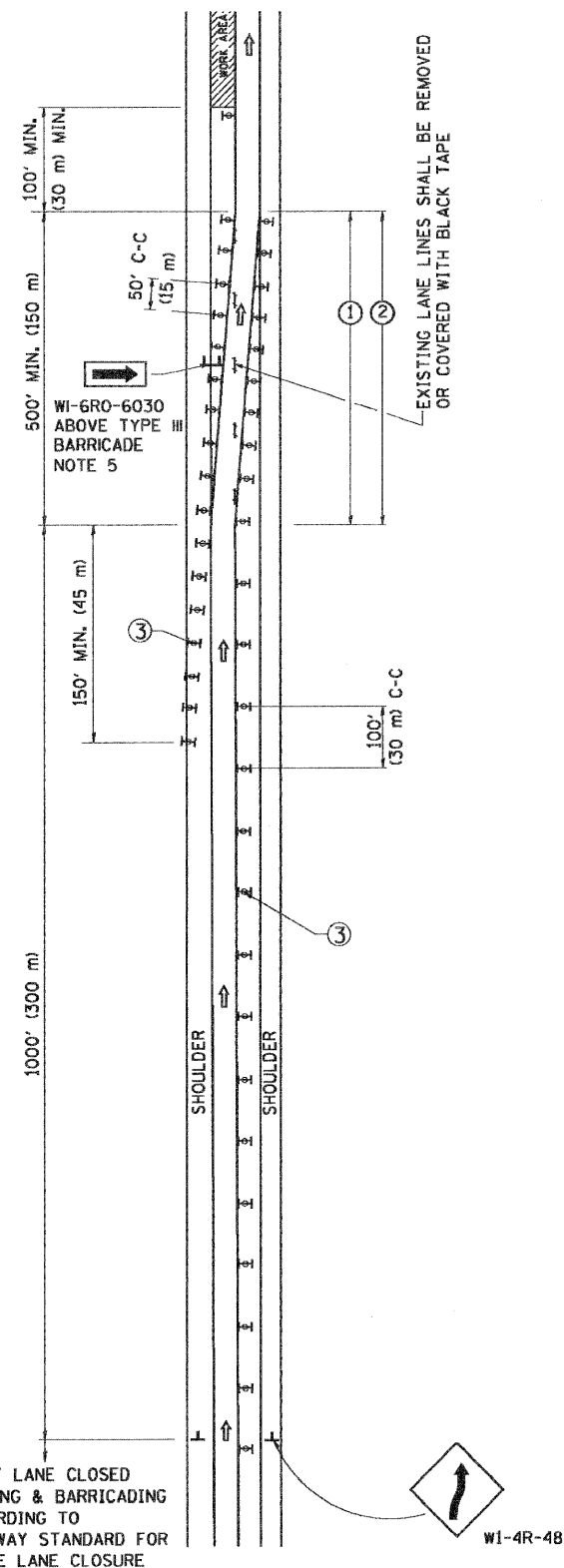
SCALE: SHEET NO. OF SHEETS STA. TO STA.

F.A.I. RTE. 290	SECTION 2008-072 GRR	COUNTY COOK	TOTAL SHEETS 10	SHEET NO. 7
FED. ROAD DIST. NO. 1 ILLINOIS FED. AID PROJECT			CONTRACT NO. 60F73	

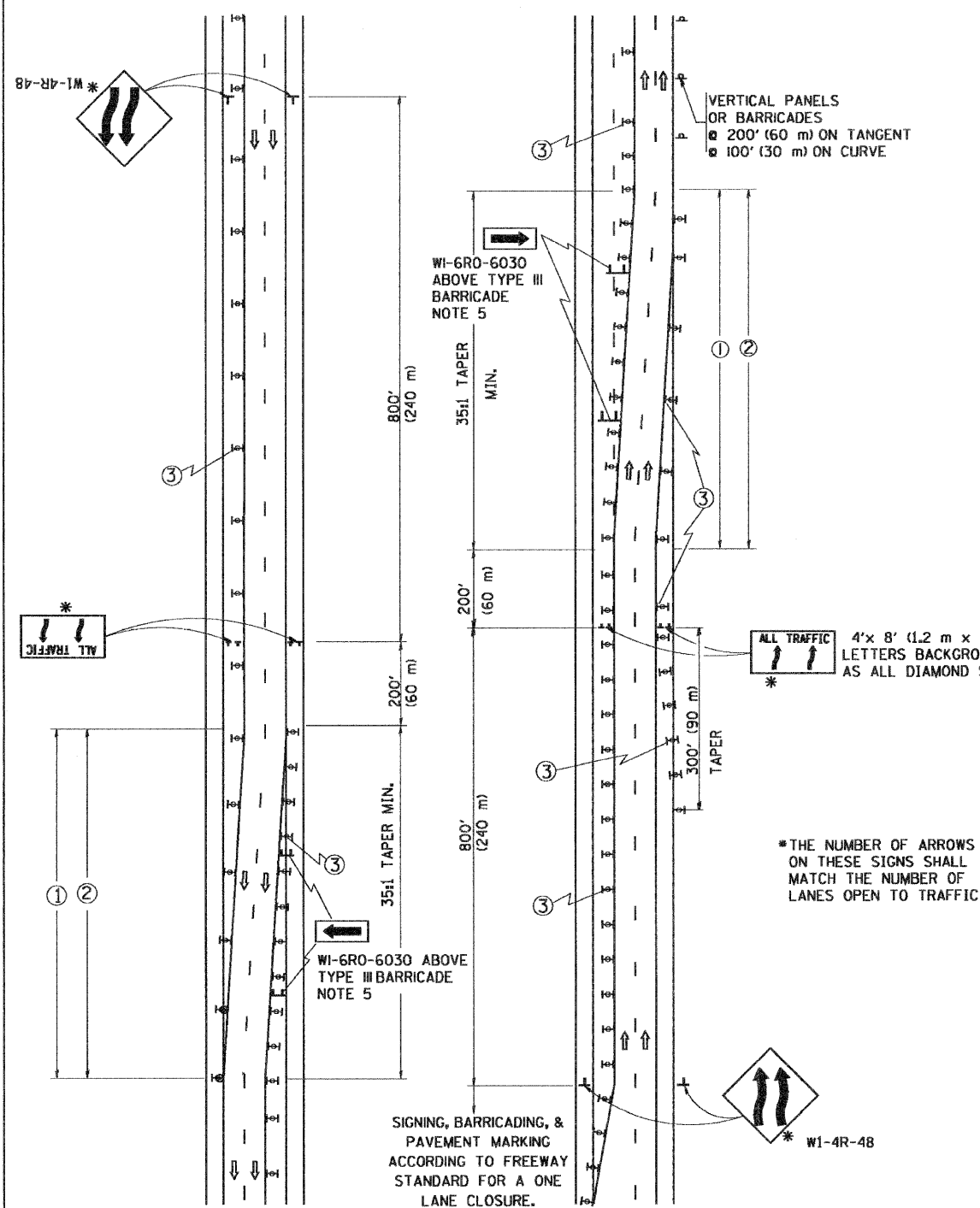


FILE NAME =	USER NAME = goglionobt	DESIGNED - DWS	REVISED - DWS 12-94	STATE OF ILLINOIS DEPARTMENT OF TRANSPORTATION	FREEWAY ENTRANCE AND EXIST RAMP CLOSURE DETAILS		F.A.I. RTE.	SECTION	COUNTY	TOTAL SHEETS	SHEET NO.
W:\distsatd\22x34\to88.dgn		DRAWN -	REVISED - DWS/JAF 12-02		290	2008-072 GRR	COOK	10	8		
	PLOT SCALE = 50,000 ' / IN.	CHECKED -	REVISED - JAF 02-06		TC-08		CONTRACT NO. 60F73				
	PLOT DATE = 1/4/2008	DATE - 02-03	REVISED - SPB 01-07		SCALE: NONE	SHEET NO. 1 OF 1 SHEETS	STA. TO STA.	FED. ROAD DIST. NO. 1 (ILLINOIS) FED. AID PROJECT			

SINGLE LANE WEAVE



MULTI-LANE WEAVE



GENERAL NOTES

- ① EXISTING CONFLICTING PAVEMENT MARKING LINES SHALL BE REMOVED OR COVERED WITH BLACK TAPE. PAVEMENT MARKING REMOVAL OR BLACK TAPE SHALL NOT BE REQUIRED FOR LANE CLOSURES UNDER 24 HOURS IN DURATION.
- ② CONTINUOUS REFLECTIVE TEMPORARY PAVEMENT MARKING TAPE SHALL BE PLACED THROUGHOUT THE TAPER AND FOR 300' (90 m) ALONG SIDE THE WORK AREA WHERE THE CLOSURE TIME IS GREATER THAN FOURTEEN DAYS. THE LEFT EDGE LINE SHALL BE YELLOW AND THE RIGHT EDGE LINE SHALL BE WHITE. FOR MULTI-LANE WEAVE LANE LINES SHALL BE 10'-30' (3 m-9 m) SKIP DASH, WHITE.
- ③ PLASTIC DRUMS WITH STEADY BURN LIGHTS AT 50' (15 m) C-C SPACING IN TAPERS AND 100' (30 m) C-C SPACING IN TANGENTS.
- ④ ALL SIGNS SHALL BE POST MOUNTED IF THE CLOSURE TIME EXCEEDS FOUR DAYS.
- ⑤ IF A TYPE III BARRICADE WITH AN ATTACHED SIGN PANEL WHICH MEETS NCHRP 350 IS NOT AVAILABLE, THE SIGNS MAY BE MOUNTED ON NCHRP 350 TEMPORARY SIGN SUPPORTS DIRECTLY IN FRONT OF THE BARRICADE.
- ⑥ IF THE WIDTH OF OFFSET IS LESS THAN 6' THEN THE TYPE III BARRICADE WITH ATTACHED ARROW SIGN PANEL CAN BE ELIMINATED IN THE TAPER AREAS.

4'x 8' (1.2 m x 2.4 m); 1 (25) BORDER; 10 (250) CAPITAL LETTERS BACKGROUND SHEETING SHALL BE THE SAME AS ALL DIAMOND SHAPED CONSTRUCTION SIGNS.

*THE NUMBER OF ARROWS ON THESE SIGNS SHALL MATCH THE NUMBER OF LANES OPEN TO TRAFFIC

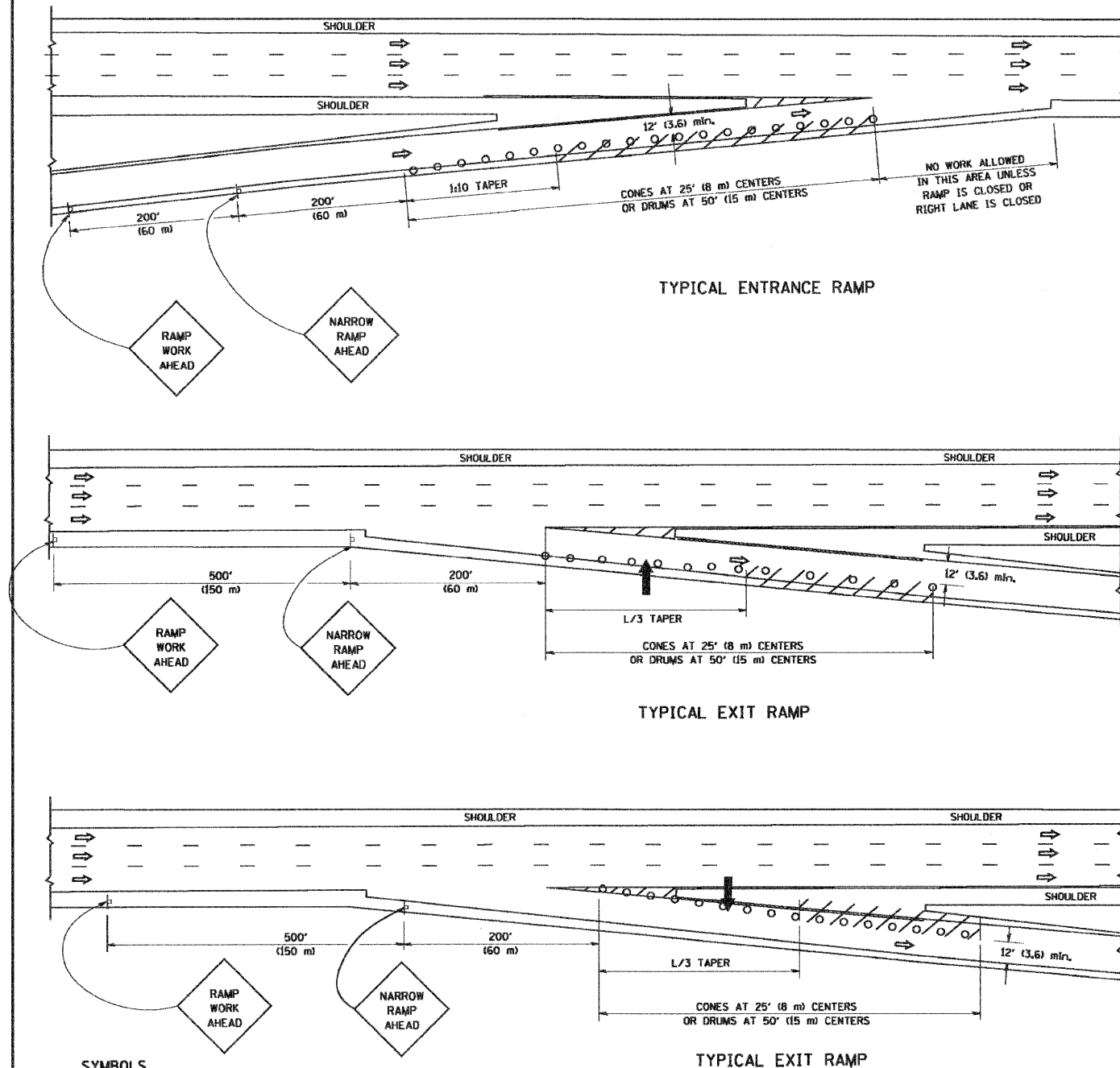
SYMBOLS

- ↑ DIRECTION OF TRAFFIC
- ▨ WORK AREA
- ⊥ SIGN ON PORTABLE OR PERMANENT SUPPORT
- ⊥ TYPE II BARRICADE, DRUM OR VERTICAL BARRICADE WITH MONO-DIRECTIONAL STEADY BURNING LIGHT

ALL DIMENSIONS ARE IN INCHES (MILLIMETERS) UNLESS OTHERWISE SHOWN

FILE NAME = W:\distatd\22x34\to09.dgn	USER NAME = goglionobt	DESIGNED - DWS	REVISED - DWS 11-96	STATE OF ILLINOIS DEPARTMENT OF TRANSPORTATION	TRAFFIC CONTROL DETAILS FOR FREEWAY SINGLE & MULTI-LANE WEAVE			F.A.I. RTE. 290	SECTION 2008-072 GRR	COUNTY COOK	TOTAL SHEETS 10	SHEET NO. 9
PLOT SCALE = 5/8" = 1' / IN.	DRAWN -	CHECKED -	REVISED - JAF 01-03		SCALE: NONE	SHEET NO. 1 OF 1 SHEETS	STA.	TO STA.	TC-09		CONTRACT NO. 60F73	
PLOT DATE = 1/4/2008	DATE - 02-87	REVISED - JAF 02-06	REVISED - SPB 01-07		FED. ROAD DIST. NO. 1 ILLINOIS FED. AID PROJECT							
CONTRACT NO. 60F73												

PARTIAL RAMP CLOSURE DETAILS



SYMBOLS

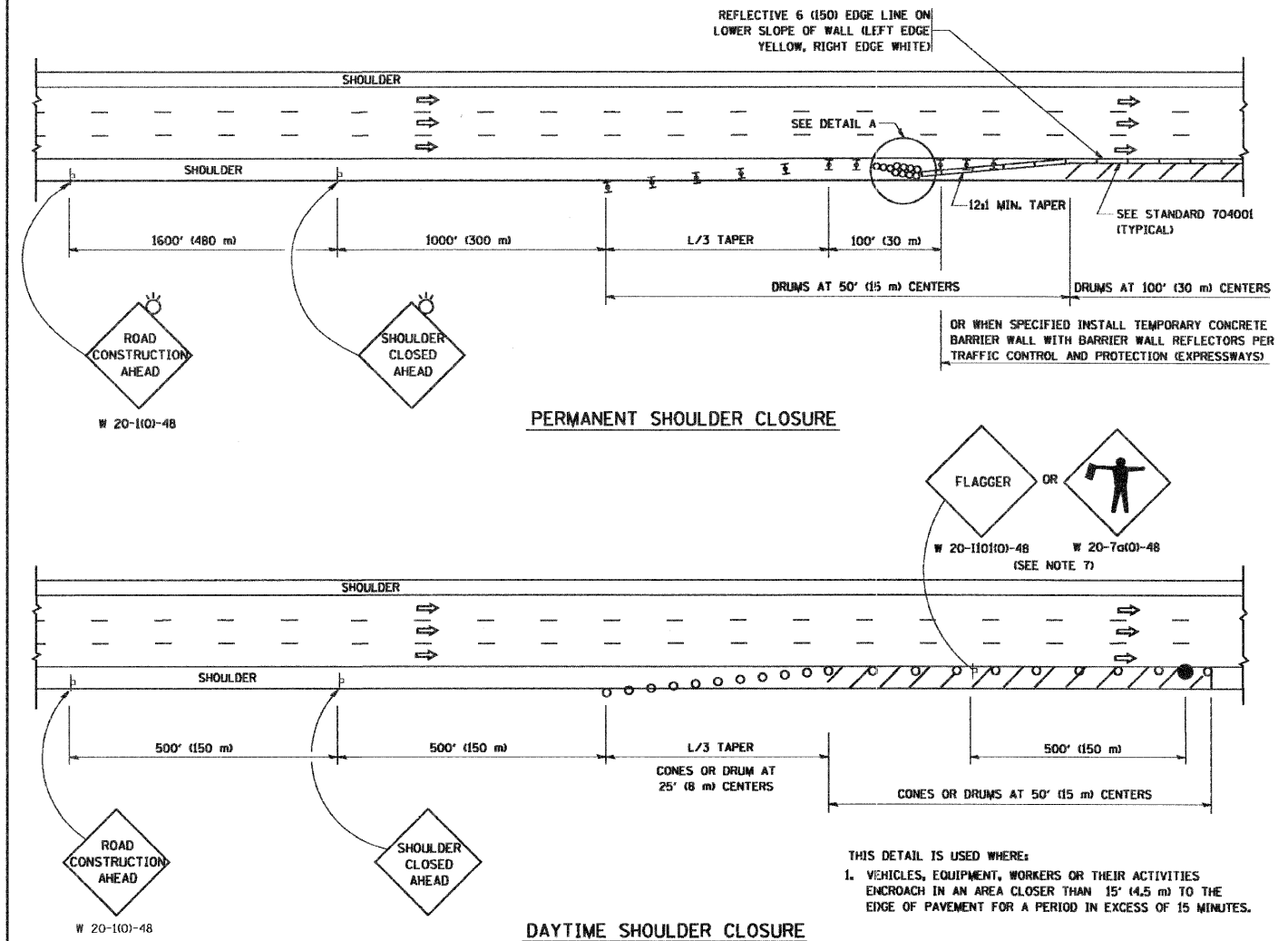
- ARROWBOARD
- WORK AREA
- SIGN ON PORTABLE OR PERMANENT SUPPORT
- FLAGGER WITH CONTROL SIGN
- TYPE II BARRICADE, DRUM OR VERTICAL BARRICADE WITH STEADY BURN MONO-DIRECTIONAL LIGHT
- CONE, DRUM OR BARRICADE

GENERAL NOTES

1. THE "L" DISTANCE EQUALS:

SPEED LIMIT	FORMULAS
45 mph (80 km/h)	METRIC ENGLISH
OR GREATER:	$L = 0.65(WHS)$ $L = (WXS)$
	W = WIDTH OF OFFSET IN FEET (METERS)
	S = NORMAL POSTED SPEED MPH (KM/H)
2. PLASTIC DRUMS WITH HIGH PERFORMANCE REFLECTIVE SHEETING AND STEADY BURNING LIGHTS ARE REQUIRED FOR ALL NIGHTTIME CLOSURES.
3. ALL SIGNS SHALL BE POST MOUNTED IF THE CLOSURE TIME EXCEEDS FOUR DAYS.
4. FLASHING LIGHTS SHALL BE USED DURING THE HOURS OF DARKNESS AND SHALL BE INSTALLED ABOVE THE FIRST TWO SETS OF SIGNS.

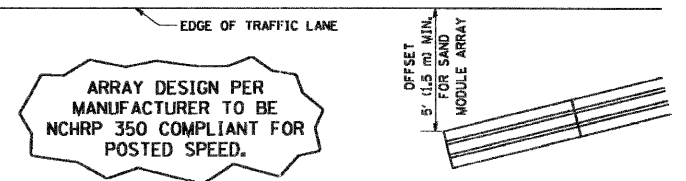
SHOULDER CLOSURE DETAILS



PERMANENT SHOULDER CLOSURE

DAYTIME SHOULDER CLOSURE

THIS DETAIL IS USED WHERE:
 1. VEHICLES, EQUIPMENT, WORKERS OR THEIR ACTIVITIES ENCR OACH IN AN AREA CLOSER THAN 15' (4.5 m) TO THE EDGE OF PAVEMENT FOR A PERIOD IN EXCESS OF 15 MINUTES.



DETAIL "A"
 IMPACT ATTENUATOR, TEMPORARY
 (SEE NOTE 5)

ALL DIMENSIONS ARE IN INCHES (MILLIMETERS) UNLESS OTHERWISE SHOWN.

W 20-110-48

W 20-110-48

W 20-110(10)-48 OR W 20-7a(10)-48 (SEE NOTE 7)

FILE NAME = W:\dststd\422x34\1017.dgn

USER NAME = gglierobt

PLOT SCALE = 60.0000' / IN.
 PLOT DATE = 1/4/2008

DESIGNED -	J.A.F. 12-02
REVISD -	04-03
CHECKED -	J.A.F. 12-06
REVISD -	S.P.B. 01-07
DATE -	11-96

STATE OF ILLINOIS
 DEPARTMENT OF TRANSPORTATION

TRAFFIC CONTROL DETAILS FOR FREEWAY SHOULDER CLOSURES AND PARTIAL RAMP CLOSURES	
SCALE: NONE	SHEET NO. 1 OF 1 SHEETS STA. TO STA.

F.A.I. RTE. 290	SECTION 2008-072 GRR	COUNTY COOK	TOTAL SHEETS 10	SHEET NO. 10
TC-17			CONTRACT NO. 60F73	
FED. ROAD DIST. NO. 1 (ILLINOIS) FED. AID PROJECT				