

F.A.P. RTE.	SECTION	COUNTY	TOTAL SHEETS	SHEET NO.
345	2008-073 GRR	COOK/KANE	20	1
FED. ROAD DIST. NO.	ILLINOIS	CONTRACT NO.	60F74	

STATE OF ILLINOIS  
DEPARTMENT OF TRANSPORTATION  
DIVISION OF HIGHWAYS

**PROPOSED  
HIGHWAY PLANS**

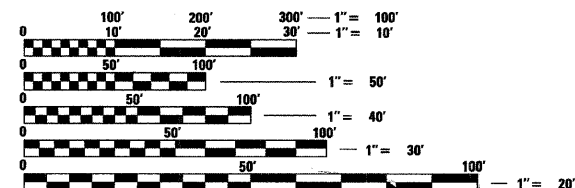
F.A.P. 345 /US 20 (LAKE STREET)  
SECTION 2008-073 GRR  
WELD ROAD TO BLUFF CITY BLVD./SHALES PARKWAY  
GUARDRAIL, SHOULDER RUMBLE STRIPS  
PROJECT: HSIP-0345(050)  
COOK AND KANE COUNTIES  
C-91-255-09

FOR INDEX OF SHEETS, SEE SHEET NO. 2

THIS IMPROVEMENT IS LOCATED  
WITHIN THE CITY OF ELGIN

**TRAFFIC DATA**

2005 ADT - 58,200  
POSTED SPEED LIMIT - 55 MPH



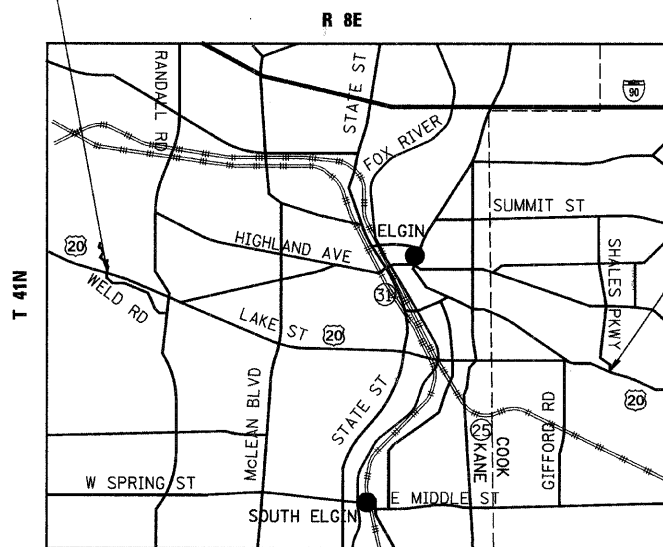
FULL SIZE PLANS HAVE BEEN PREPARED USING STANDARD ENGINEERING SCALES. REDUCED SIZED PLANS WILL NOT CONFORM TO STANDARD SCALES. IN MAKING MEASUREMENTS ON REDUCED PLANS, THE ABOVE SCALES MAY BE USED.

J.U.L.I.E.  
JOINT UTILITY LOCATION INFORMATION FOR EXCAVATION  
1-800-892-0123  
OR 811

**Ciorba Group, Inc.**

DESIGN FIRM  
REGISTRATION NUMBER  
184-001016  
CONSULTING ENGINEERS  
SUITE 402, 5507 NORTH CUMBERLAND AVE  
CHICAGO, ILLINOIS 60656 ☎ (773) 775-4009

BEGIN PROJECT  
STA. 94 + 35.86



ELGIN TOWNSHIP  
LOCATION MAP

1" = 5000'

GROSS AND NET LENGTH OF PROJECT = 32,117.34 FT = 6.08 MI.

END PROJECT  
STA. 415 + 53.20

D-91-255-09



LOCATION OF SECTION INDICATED THIS: -

STATE OF ILLINOIS  
DEPARTMENT OF TRANSPORTATION  
DIVISION OF HIGHWAYS

SUBMITTED December 18, 2008  
Diana M. O'Keefe *gc*  
DEPUTY DIRECTOR OF HIGHWAYS, REGION ENGINEER  
January 30, 2009  
Charles G. Ingersoll *CD*  
ENGINEER OF DESIGN AND ENVIRONMENT  
January 30, 2009  
Christine M. Reed *CD*  
DIRECTOR OF HIGHWAYS, CHIEF ENGINEER



**PRINTED BY THE AUTHORITY  
OF THE STATE OF ILLINOIS**

DISTRICT 1 DESIGN PLAN PREPARATION ENGINEER: K. ENG (847)705-4247

CONTRACT NO. 60F74