

F.A.P. RTE.	SECTION	COUNTY	TOTAL SHEETS	SHEET NO.
333	2002-101N	LAKE	75	1

75+1=76

D-91-295-02

STATE OF ILLINOIS  
DEPARTMENT OF TRANSPORTATION  
DIVISION OF HIGHWAYS  
**PROPOSED  
HIGHWAY PLANS**

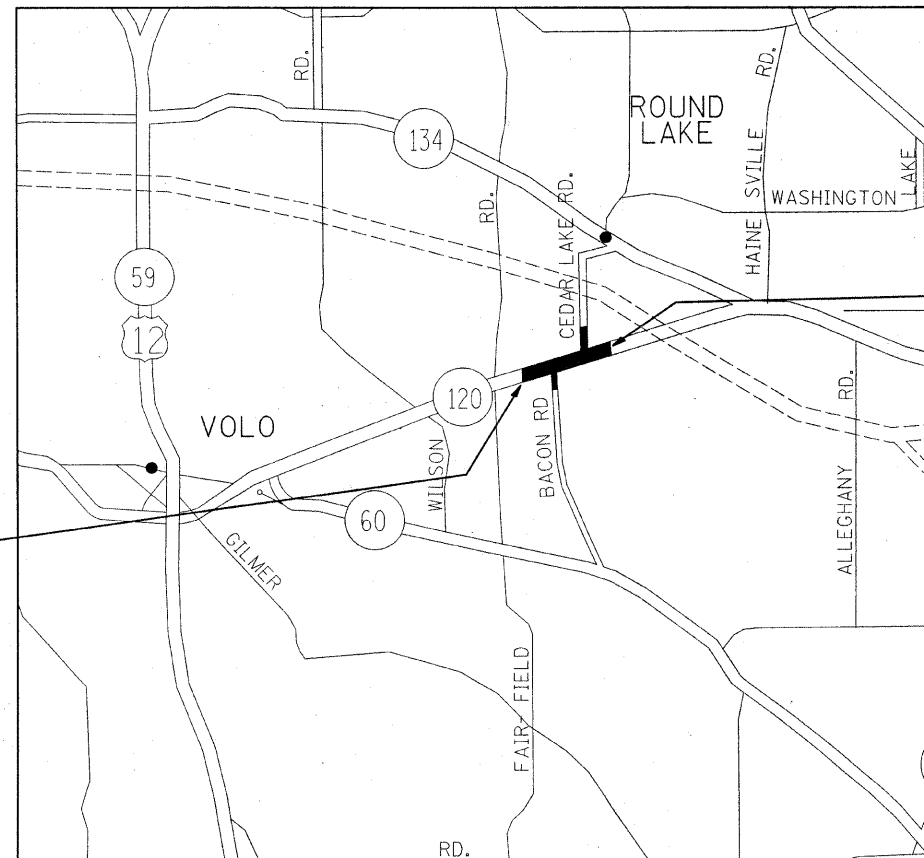
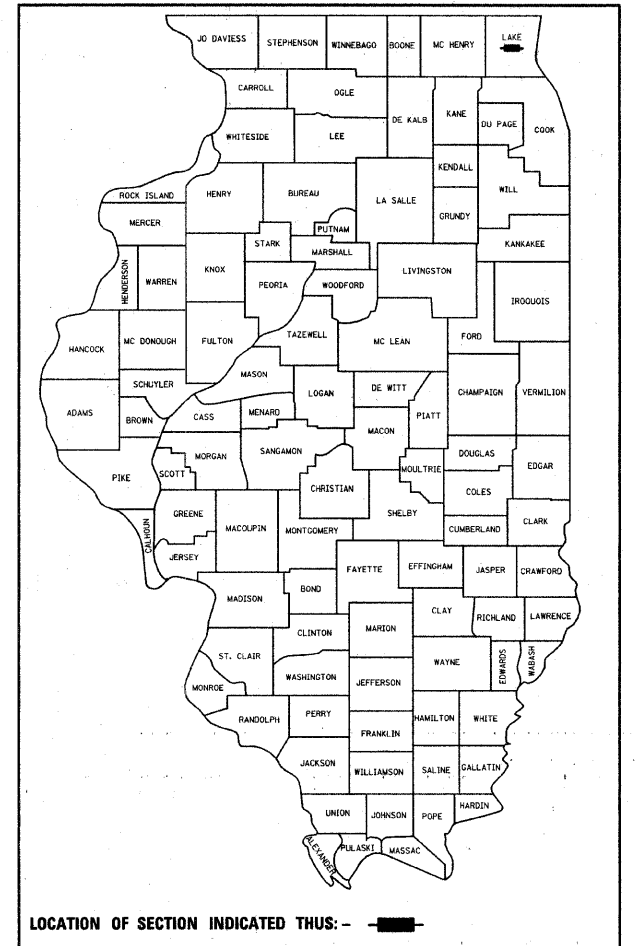
F.A.P 333:IL. ROUTE 120  
AT BACON RD AND CEDAR LAKE RD.  
SECTION 2002-101N  
INTERSECTION RECONSTRUCTION  
PROJECT: *NHF-HPP-0333 (014)*  
LAKE COUNTY  
C-91-295-02

FOR INDEX OF SHEETS, SEE SHEET NO. 2

THE IMPROVEMENT IS LOCATED IN THE VILLAGE OF ROUND LAKE

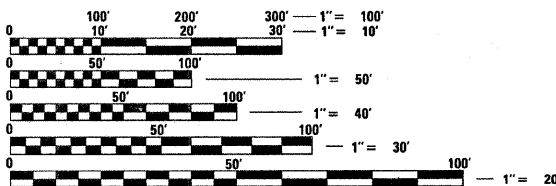
**TRAFFIC DATA**

- IL ROUTE 120  
2006 ADT=16,400  
SPEED LIMIT=55 MPH
- BACON RD.  
2006 ADT=2500  
SPEED LIMIT=45 MPH
- CEDAR LAKE RD.  
2006 ADT=5,800  
SPEED LIMIT=45 MPH



PROJECT ENDS  
STATION 158 + 75

PROJECT BEGINS  
STATION 123 + 96.9



FULL SIZE PLANS HAVE BEEN PREPARED USING STANDARD ENGINEERING SCALES. REDUCED SIZED PLANS WILL NOT CONFORM TO STANDARD SCALES. IN MAKING MEASUREMENTS ON REDUCED PLANS, THE ABOVE SCALES MAY BE USED.

J.U.L.I.E.  
JOINT UTILITY LOCATION INFORMATION FOR EXCAVATION  
1-800-892-0123

ROUND LAKE TOWNSHIP

GROSS & NET LENGHT = 3478 FT = 0.6587 MILE

STATE OF ILLINOIS  
DEPARTMENT OF TRANSPORTATION  
DIVISION OF HIGHWAYS

SUBMITTED *December 18, 20 08*

*Diana M. O'Keefe* DEPUTY DIRECTOR OF HIGHWAYS, REGION ENGINEER  
*January 30, 20 09*  
*Charles G. [Signature]* ENGINEER OF DESIGN / AND ENVIRONMENT

*January 30, 20 09*  
*Christine M. Reed* DIRECTOR OF HIGHWAYS, CHIEF ENGINEER

PRINTED BY THE AUTHORITY OF THE STATE OF ILLINOIS