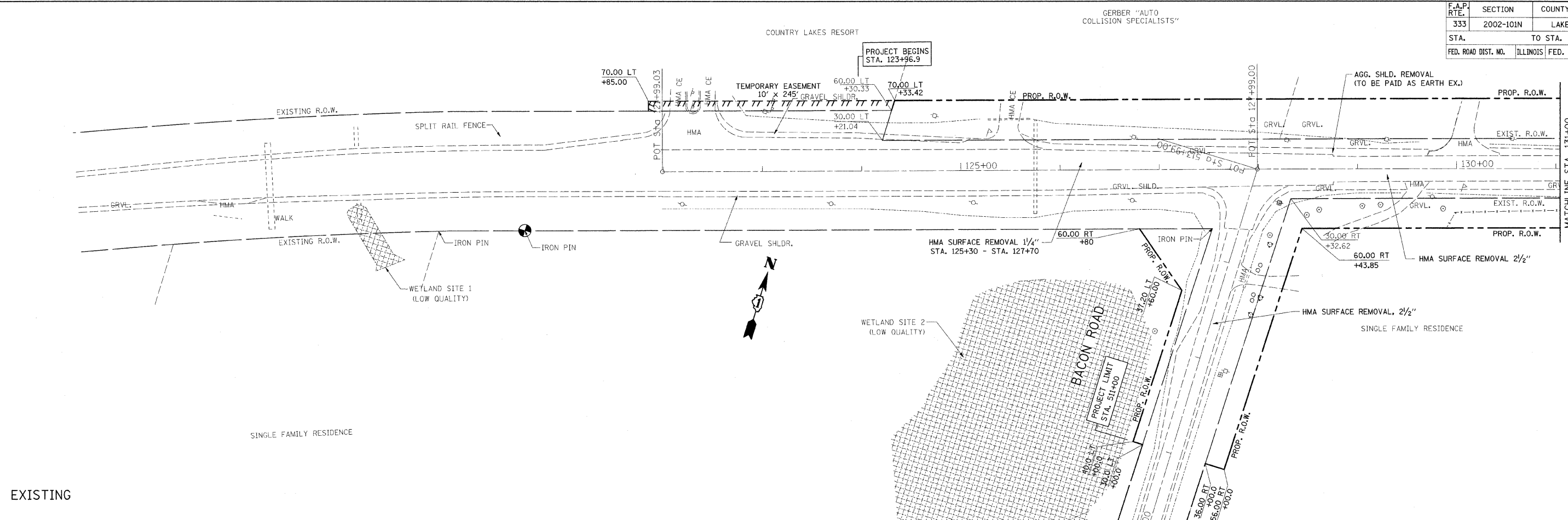
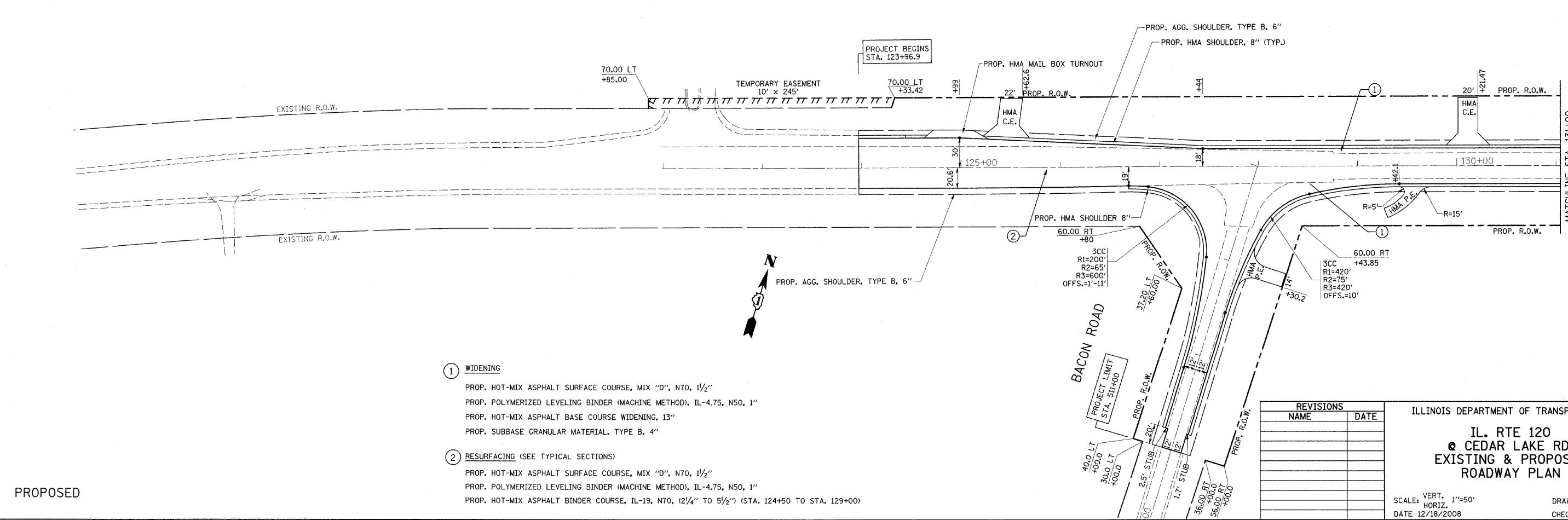


F.A.P. RTE.	SECTION	COUNTY	TOTAL SHEETS	SHEET NO.
333	2002-101N	LAKE	75	13
STA.		TO STA.		
FED. ROAD DIST. NO.		ILLINOIS FED. AID PROJECT		



EXISTING



PROPOSED

- ① **WIDENING**
 - PROP. HOT-MIX ASPHALT SURFACE COURSE, MIX "D", N70, 1 1/2"
 - PROP. POLYMERIZED LEVELING BINDER (MACHINE METHOD), IL-4.75, N50, 1"
 - PROP. HOT-MIX ASPHALT BASE COURSE WIDENING, 13"
 - PROP. SUBBASE GRANULAR MATERIAL, TYPE B, 4"
- ② **RESURFACING (SEE TYPICAL SECTIONS)**
 - PROP. HOT-MIX ASPHALT SURFACE COURSE, MIX "D", N70, 1 1/2"
 - PROP. POLYMERIZED LEVELING BINDER (MACHINE METHOD), IL-4.75, N50, 1"
 - PROP. HOT-MIX ASPHALT BINDER COURSE, IL-19, N70, (2 1/4" TO 5 1/2") (STA. 124+50 TO STA. 129+00)

REVISIONS	
NAME	DATE

ILLINOIS DEPARTMENT OF TRANSPORTATION
**IL. RTE 120
@ CEDAR LAKE RD.
EXISTING & PROPOSED
ROADWAY PLAN**

SCALE: VERT. 1"=50'
HORIZ. DATE 12/18/2008
DRAWN BY
CHECKED BY