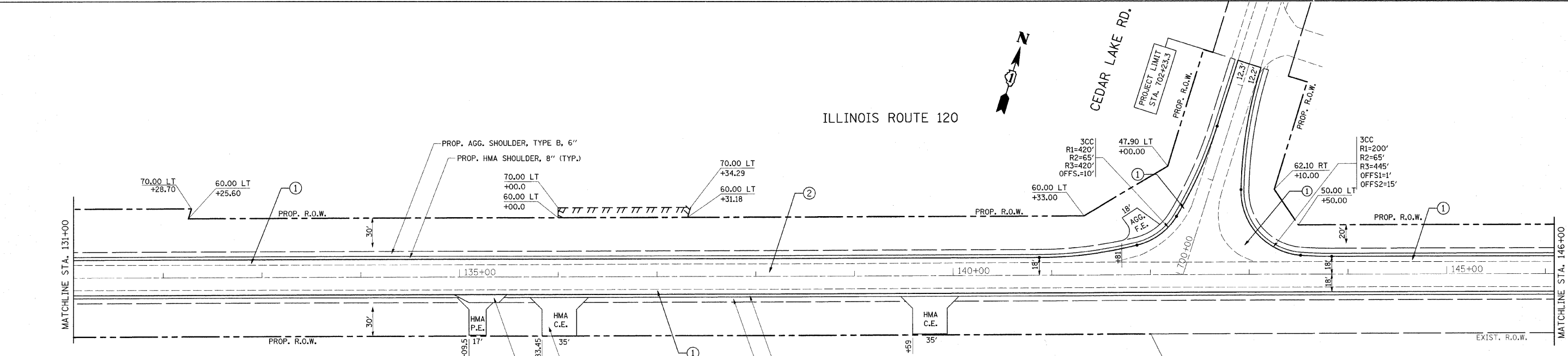
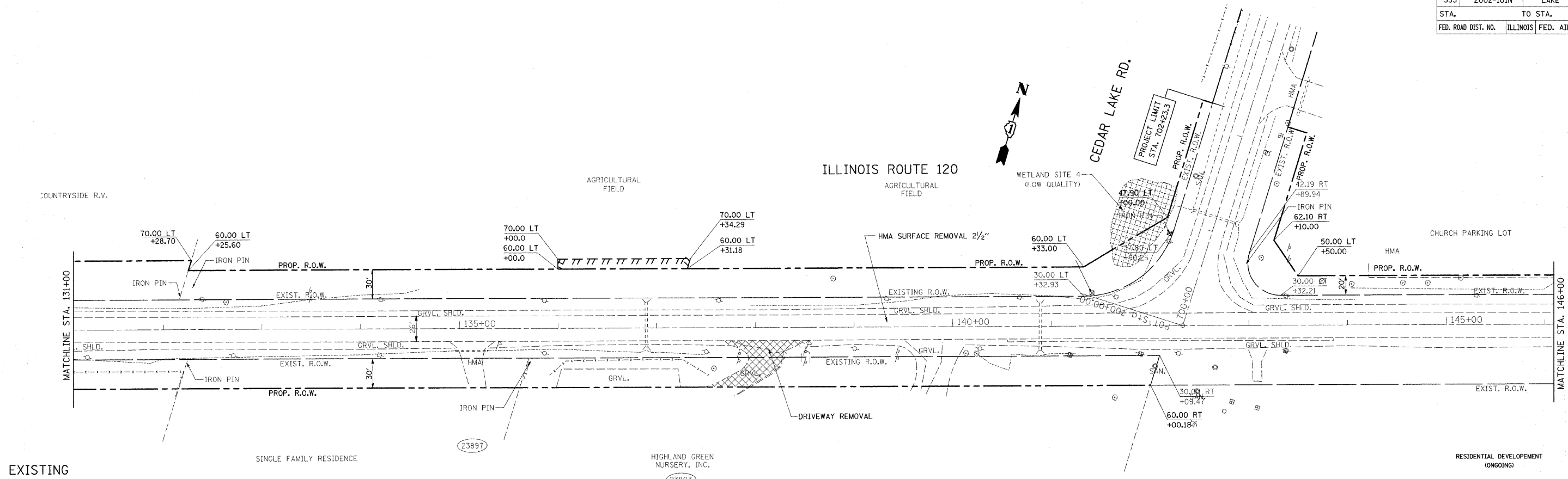


| F.A.P. RTE. | SECTION | COUNTY | TOTAL SHEETS | SHEET NO. |
|---------------------|-----------|------------------|--------------|-----------|
| 333 | 2002-101N | LAKE | 75 | 14 |
| STA. | | TO STA. | | |
| FED. ROAD DIST. NO. | ILLINOIS | FED. AID PROJECT | | |



- ① WIDENING
 - PROP. HOT-MIX ASPHALT CONCRETE SURFACE COURSE, MIX "D", N70, 1 1/2"
 - PROP. POLYMERIZED LEVELING BINDER (MACHINE METHOD), IL-4.75, N50, 1"
 - PROP. HOT-MIX ASPHALT BASE COURSE WIDENING, 13"
 - PROP. SUBBASE GRANULAR MATERIAL, TYPE B, 4"
- ② RESURFACING (SEE TYPICAL SECTIONS)
 - PROP. HOT-MIX ASPHALT CONCRETE SURFACE COURSE, MIX "D", N70, 1 1/2"
 - PROP. POLYMERIZED LEVELING BINDER (MACHINE METHOD), IL-4.75, N50, 1"

| REVISIONS | |
|-----------|------|
| NAME | DATE |
| | |
| | |
| | |
| | |
| | |
| | |
| | |

ILLINOIS DEPARTMENT OF TRANSPORTATION

**IL. RTE 120
@ CEDAR LAKE RD.
EXISTING & PROPOSED
ROADWAY PLAN**

SCALE: VERT. 1"=50'
HORIZ. DATE 12/17/2008

DRAWN BY
CHECKED BY

PLOT DATE = 12/17/2008
 FILE NAME = c:\pva\work\pva\pmdot\alrich\chd\cma93862\sh_rduj.bb.dgn
 PLOT SCALE = 48.9999 / IN.
 USER NAME = aurrckd