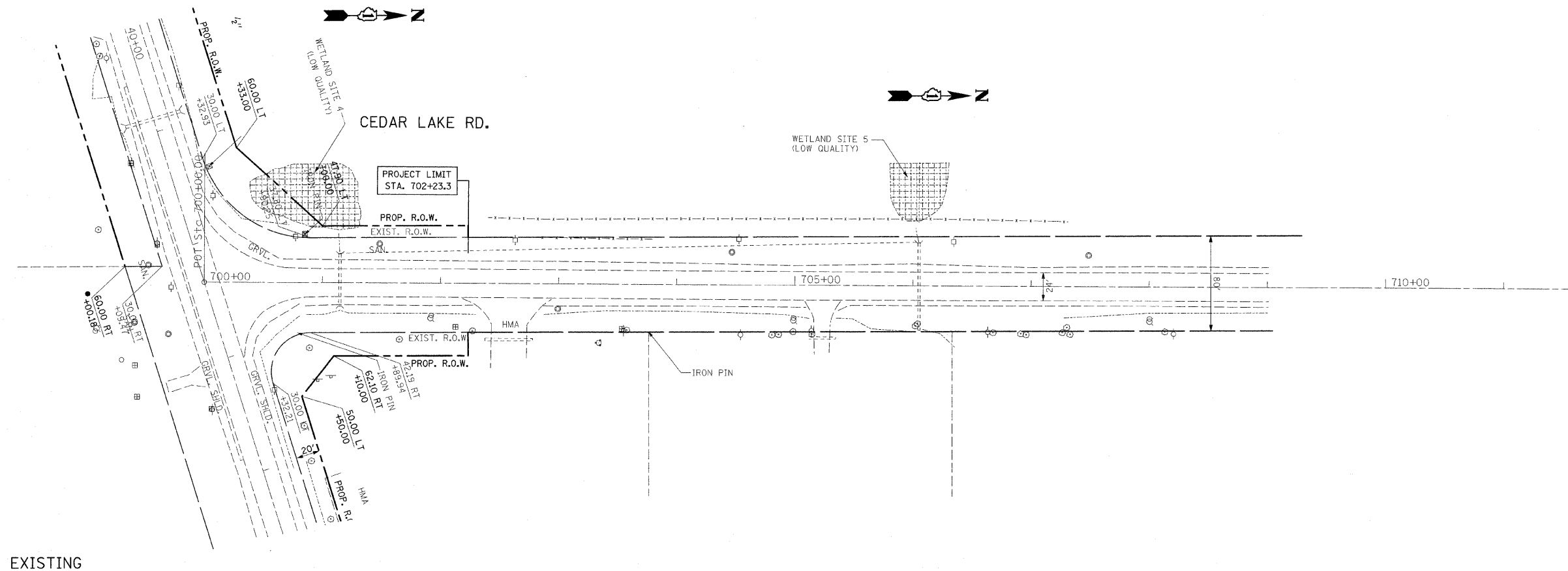
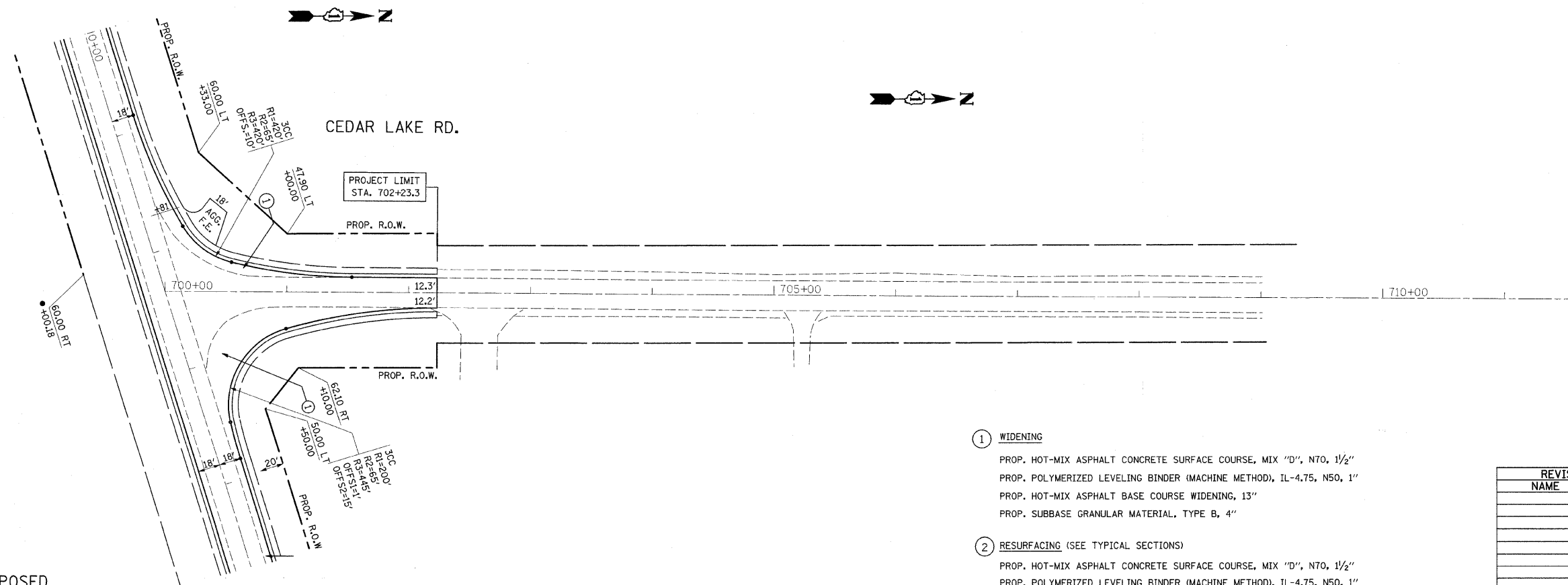


F.A.P. RTE.	SECTION	COUNTY	TOTAL SHEETS	SHEET NO.
333	2002-101N	LAKE	75	16
STA.		TO STA.		
FED. ROAD DIST. NO.		ILLINOIS FED. AID PROJECT		



EXISTING



PROPOSED

- ① WIDENING
 PROP. HOT-MIX ASPHALT CONCRETE SURFACE COURSE, MIX "D", N70, 1 1/2"
 PROP. POLYMERIZED LEVELING BINDER (MACHINE METHOD), IL-4.75, N50, 1"
 PROP. HOT-MIX ASPHALT BASE COURSE WIDENING, 13"
 PROP. SUBBASE GRANULAR MATERIAL, TYPE B, 4"
- ② RESURFACING (SEE TYPICAL SECTIONS)
 PROP. HOT-MIX ASPHALT CONCRETE SURFACE COURSE, MIX "D", N70, 1 1/2"
 PROP. POLYMERIZED LEVELING BINDER (MACHINE METHOD), IL-4.75, N50, 1"

REVISIONS	
NAME	DATE

ILLINOIS DEPARTMENT OF TRANSPORTATION
**IL. RTE 120
 @ CEDAR LAKE RD.
 EXISTING & PROPOSED
 ROADWAY PLAN**

SCALE: VERT. 1"=50'
 HORIZ. 1"=50'
 DATE 12/17/2008

DRAWN BY
 CHECKED BY