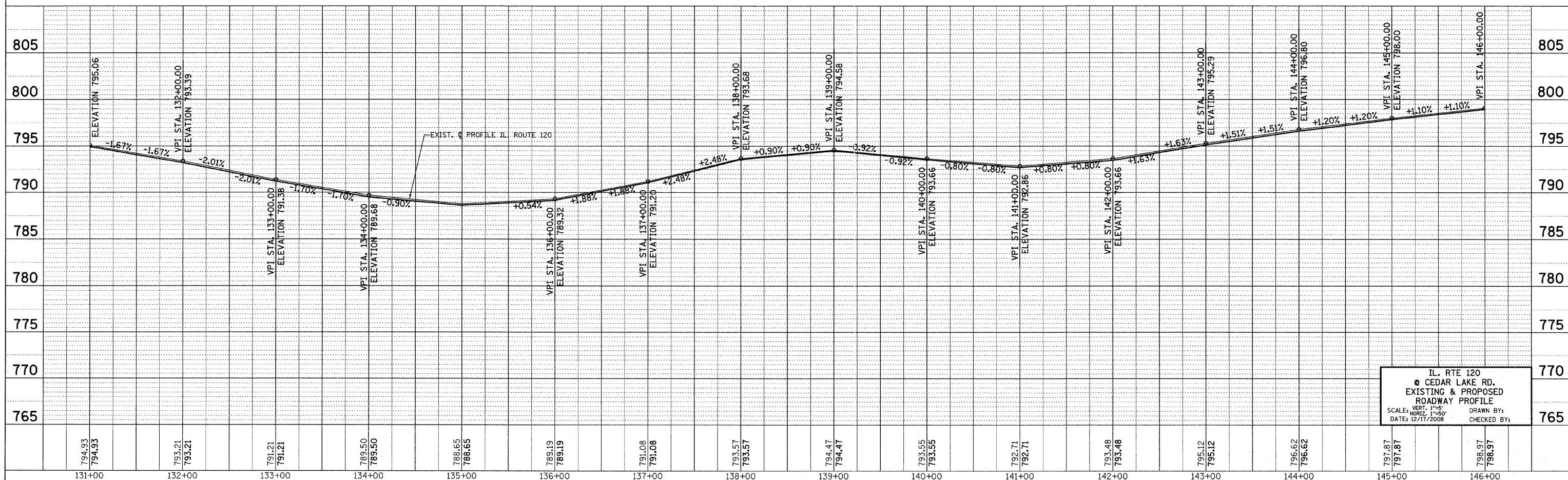
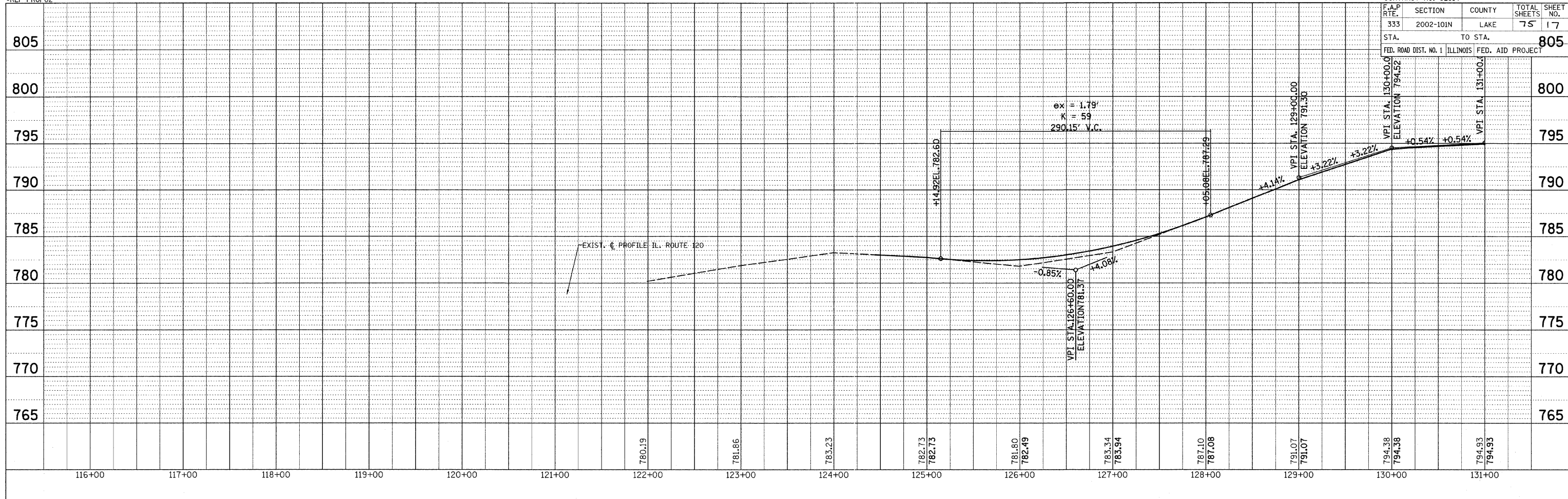


REF-PROF01  
REF-PROF02

CONTRACT NO. 62514				
F.A.P. RTE.	SECTION	COUNTY	TOTAL SHEETS	SHEET NO.
333	2002-101N	LAKE	75	17
STA. 333		TO STA. 805		805
FED. ROAD DIST. NO. 1 ILLINOIS FED. AID PROJECT				



IL. RTE 120  
@ CEDAR LAKE RD.  
EXISTING & PROPOSED  
ROADWAY PROFILE  
SCALE: VERT. 1"=5'  
HORIZ. 1"=50'  
DATE: 12/17/2008  
DRAWN BY:  
CHECKED BY: