

STATE OF ILLINOIS
DEPARTMENT OF TRANSPORTATION
DIVISION OF HIGHWAYS

**PROPOSED
HIGHWAY PLANS**

**FAU ROUTE 2775 (OAK PARK AVENUE)
SOUTH BOULEVARD TO NORTH BOULEVARD
VIADUCT ENHANCEMENT, SIDEWALK REPLACEMENT
AND ROADWAY LIGHTING
SECTION 06-00243-00-BR
PROJECT NO. TE-0001(718)
VILLAGE OF OAK PARK
COOK COUNTY**

F.A.U. RTE.	SECTION	COUNTY	TOTAL SHEETS	SHEET NO.
2775	06-00243-00-BR	COOK	15	1
FED. ROAD DIST. NO.	ILLINOIS	CONTRACT NO. 63091		



INDEX OF SHEETS

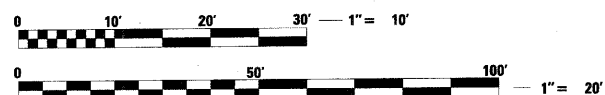
SHEET NO.	DESCRIPTION
1	COVER SHEET/INDEX OF SHEETS
2	GENERAL NOTES, HIGHWAY STANDARDS AND DISTRICT ONE DETAILS
3	SUMMARY OF QUANTITIES
4	OAK PARK AVENUE VIADUCT PLAN
5-10	ARCHITECTURAL PLAN SHEETS
11	STRUCTURAL SHEETS
12	DETAILS
13-15	DISTRICT DETAILS

VILLAGE OF OAK PARK

POLICE DEPARTMENT (708) 386-3800
FIRE DEPARTMENT (708) 386-3300

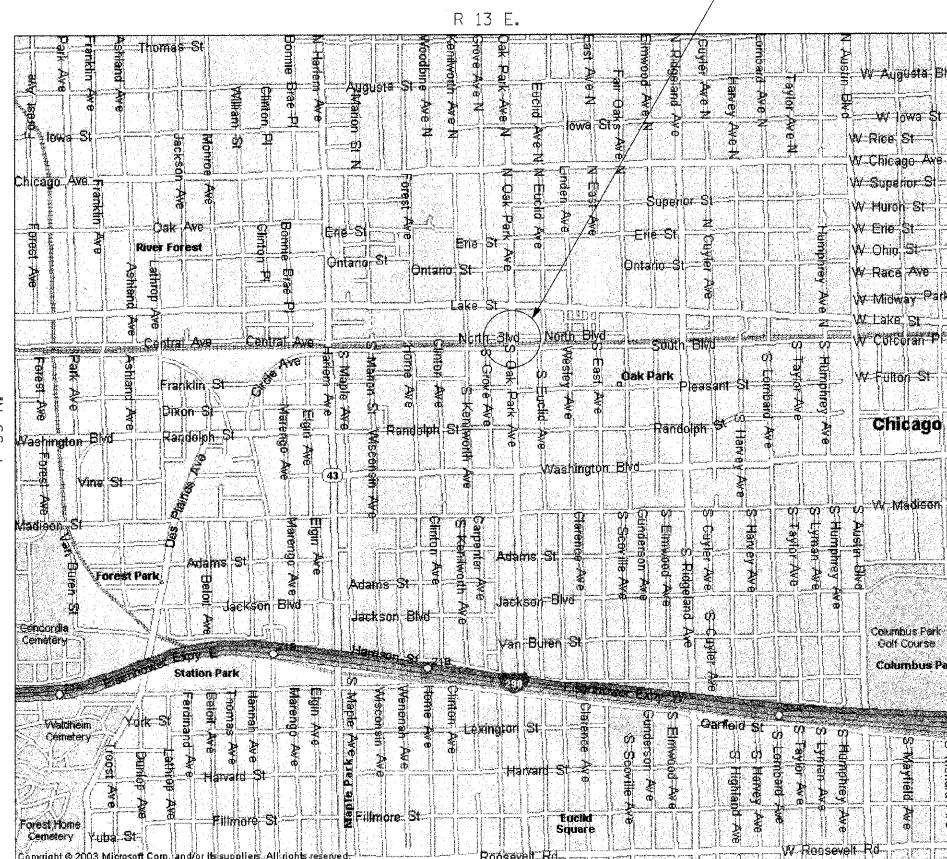
POSTED SPEED LIMIT

OAK PARK AVENUE 30 M.P.H.



FULL SIZE PLANS HAVE BEEN PREPARED USING STANDARD ENGINEERING SCALES. REDUCED SIZED PLANS WILL NOT CONFORM TO STANDARD SCALES. IN MAKING MEASUREMENTS ON REDUCED PLANS, THE ABOVE SCALES MAY BE USED.

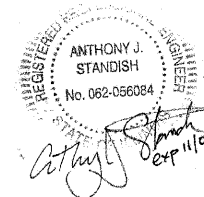
J.U.L.I.E.
JOINT UTILITY LOCATION INFORMATION FOR EXCAVATION
1-800-892-0123
OR 811



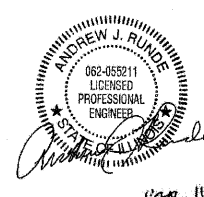
**OAK PARK TOWNSHIP LOCATION MAP
NO SCALE**

GROSS PROJECT LENGTH: 110 FEET = 0.021 MILES
NET PROJECT LENGTH: 110 FEET = 0.021 MILES

**OAK PARK AVENUE VIADUCT
STA. 82+31 TO STA. 83+41**



ALL EXCEPT ARCHITECTURAL PLANS



ELECTRICAL DETAILS



ARCHITECTURAL PLANS

**PRINTED BY THE AUTHORITY
OF THE STATE OF ILLINOIS**

STATE OF ILLINOIS
DEPARTMENT OF TRANSPORTATION
DIVISION OF HIGHWAYS

APPROVED Nov 20, 2008
[Signature]
62-39749 REGISTERED PROFESSIONAL ENGINEER ILLINOIS

PASSED JANUARY 7, 2009
[Signature] CHRISTOPHER HERTZ
DISTRICT 1 ENGINEER OF LOCAL ROADS AND STREETS

RELEASING FOR BID BASED ON LIMITED REVIEW JANUARY 8, 2009
[Signature] DIANE M. O'KEEFE
DEPUTY DIRECTOR OF HIGHWAYS, REGION 1 ENGINEER

1170 SOUTH HOUBOLT ROAD
JOLIET, ILLINOIS 60431
(815) 744-4200
ENGINEERS

CONTRACT NO. 63091

STRAND ASSOCIATES INC. PROJECT MANAGER: RAYMOND KLUMAPLEY (815) 744-4200

FIELD ENGINEER: MARILYN SOLOMON, P.E. (847) 705-4407