

F.A.U. RTE.	SECTION	COUNTY	TOTAL SHEETS	SHEET NO.
3513	08-00107-00-PV	COOK	169	1
FED. ROAD DIST. NO.	ILLINOIS	CONTRACT NO. 63094		

1/69+2 17/70+1

INDEX OF SHEETS

- 1 COVER SHEET
- 2-3 GENERAL NOTES, SPECIFICATIONS, & STATE STANDARDS
- 4-7 SUMMARY OF QUANTITIES
- 8-9 TYPICAL SECTIONS
- 10-11 EARTHWORK TABLE
- 12-13 ALIGNMENT, TIE, & BENCHMARKS
- 14-19 ROADWAY PLAN AND PROFILE
- 20-27 SUGGESTED MAINTENANCE OF TRAFFIC PLAN
- 28-30 EROSION CONTROL PLAN
- 31-37 DRAINAGE AND UTILITY PLAN AND PROFILE
- 38-47 WATER MAIN PLAN AND DETAILS
- 48 INTERSECTION GRADING PLAN
- 49-51 PAVEMENT MARKING AND SIGNING PLAN
- 52-58 LANDSCAPE PLAN AND DETAILS
- 59-73 TRAFFIC SIGNAL PLANS
- 74-86 LIGHTING PLAN AND DETAILS
- 87-99 DISTRICT ONE STANDARDS
- 100-169 CROSS SECTIONS

**DEPARTMENT OF TRANSPORTATION
DIVISION OF HIGHWAYS**

**PLANS FOR PROPOSED
FEDERAL HIGHWAY**

**FAU 3513 (ILLINOIS ROUTE 21 – MILWAUKEE AVENUE)
WEST ALBION AVENUE TO NEVA AVENUE
WIDENING AND RESURFACING**

**AND
HARTS ROAD TO MONROE STREET
STREETScape IMPROVEMENTS**

**SECTION NO.: 08-00107-01-PV
PROJECT NO.: TE-M-9003(126)
VILLAGE OF NILES
COOK COUNTY
C-91-148-09**



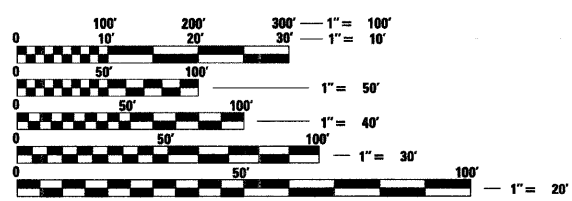
LOCATION OF SECTION INDICATED THUS: - [black rectangle] -

TRAFFIC DATA

ADT:
MILWAUKEE AVE.. 36,400 VPD (2007) 38,000 VPD (2030)


POSTED SPEED DESIGN SPEED

35 MPH (EXISTING) 40 MPH (PROPOSED)
35 MPH (PROPOSED)



FULL SIZE PLANS HAVE BEEN PREPARED USING STANDARD ENGINEERING SCALES. REDUCED SIZED PLANS WILL NOT CONFORM TO STANDARD SCALES. IN MAKING MEASUREMENTS ON REDUCED PLANS, THE ABOVE SCALES MAY BE USED.

J.U.L.I.E.
JOINT UTILITY LOCATION INFORMATION FOR EXCAVATION CALL 811



Know what's below.
Call before you dig.

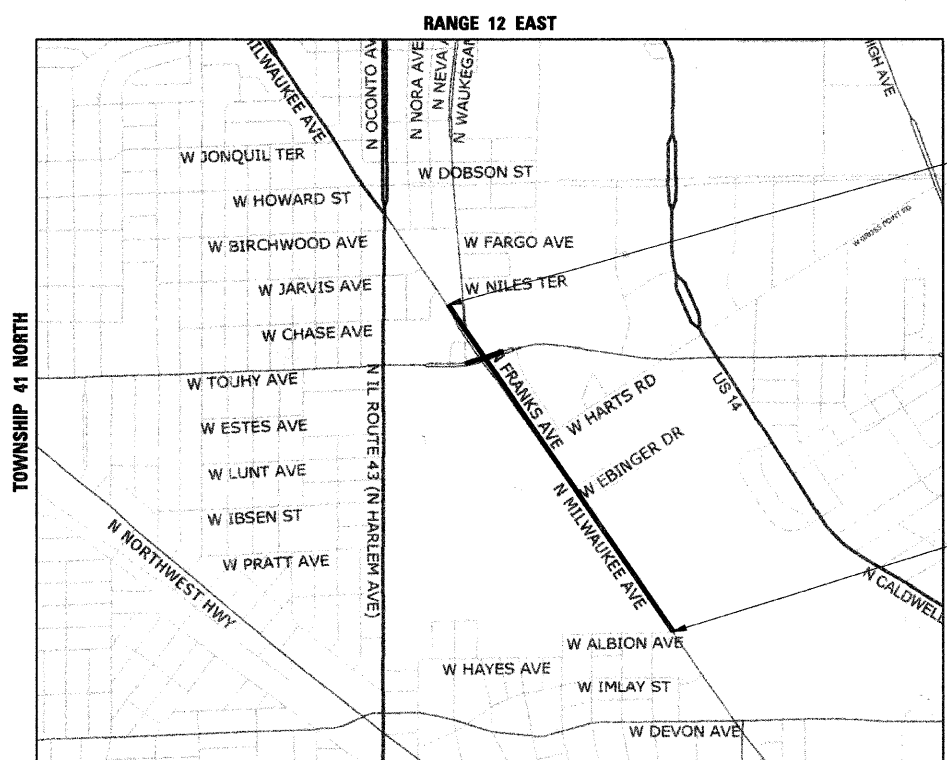
Illinois Professional Design Firm # 184-000108



SEC Group, Inc.
Engineering
Surveying
Planning
Landscape Architecture
McHenry • Yorkville • New Lenox • Chicago
www.secgroupinc.com

**PROJECT ENGINEER: C. HARTKE
PROJECT MANAGER: J. PISHA**

CONTRACT NO. 63094



PROJECT LOCATION MAP
N.T.S.

PROJECT LENGTH

NET LENGTH OF PROJECT (MILWAUKEE AVE.) = 6,075.00 FT (1.151 MI)
GROSS LENGTH OF PROJECT = 6,075.00 FT (1.151 MI)

PROJECT ENDS
WIDENING & RESURFACING
STA. 166 + 00

PROJECT BEGINS
WIDENING & RESURFACING
STA. 105 + 25



STATE OF ILLINOIS
DEPARTMENT OF TRANSPORTATION
DIVISION OF HIGHWAYS


APPROVED 12/23 20 08
Mano Noyel
VILLAGE OF NILES

PASSED 1-08 20 09
Christophe Holt
DISTRICT ONE ENGINEER OF LOCAL ROADS AND STREETS

RELEASING FOR BID
BASED ON LIMITED REVIEW JANUARY 6, 20 09
Diana M. O'Keefe
DEPUTY DIRECTOR OF HIGHWAYS, REGION ONE ENGINEER

PROFESSIONAL ENGINEER'S SIGN & SEAL

Jeffrey L. Pisha 12-23-08
JEFFREY L. PISHA
EXPIRES: 11-30-09



SEAL

**PRINTED BY THE AUTHORITY
OF THE STATE OF ILLINOIS**

COMPANY NAME: SEC GROUP, INC.
 PROJECT CONTACT: ARAM CHAUDHARY
 PROJECT NO.: 08-00107-01-PV
 DATE PLOTTED: 12/22/2008 11:54:49 AM
 FILE NAME: 080253-cvr.dgn
 PLOT DRIVER: pdfplot
 PEN TABLE: standard-frank.tbl
 FEDERAL AID DESIGN ENGINEER: ALEX HOUSEH (847) 705-4410