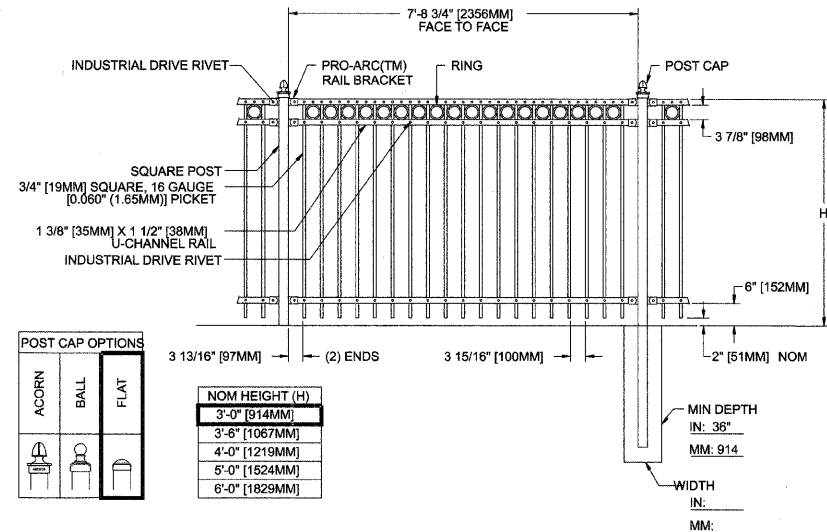
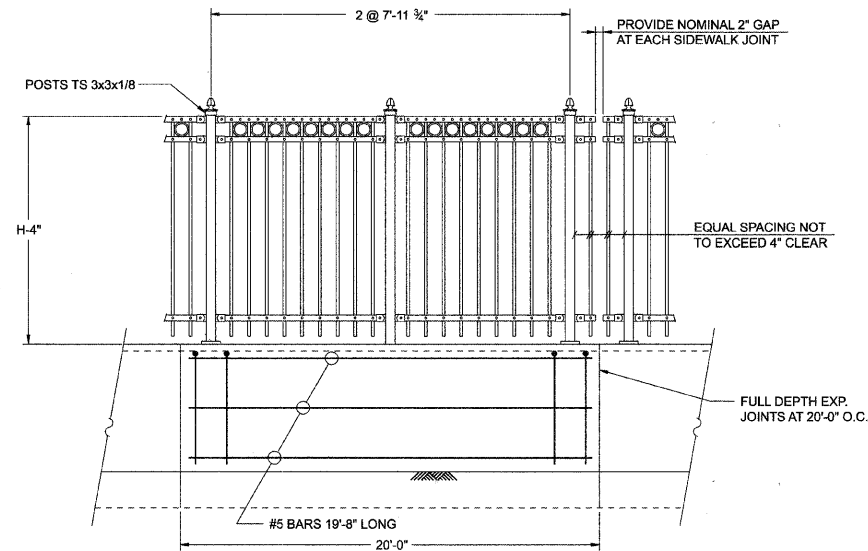


DETAILS



ORNAMENTAL FENCE, WRAUGHT IRON TYPICAL DETAIL

SCALE: N.T.S. *provided by Master Halco



ORNAMENTAL FENCE, WRAUGHT IRON, SPECIAL TYPICAL DETAIL (STA 159+80 LT TO STA 161+31 LT)

SCALE: N.T.S.

MANUFACTURER:



PRODUCT: Imperial Fence - Style D Modified
Nom 8" Section Length - 3/4" Pickets
or approved equal

COLOR: Black

HEIGHT: 3'-0"

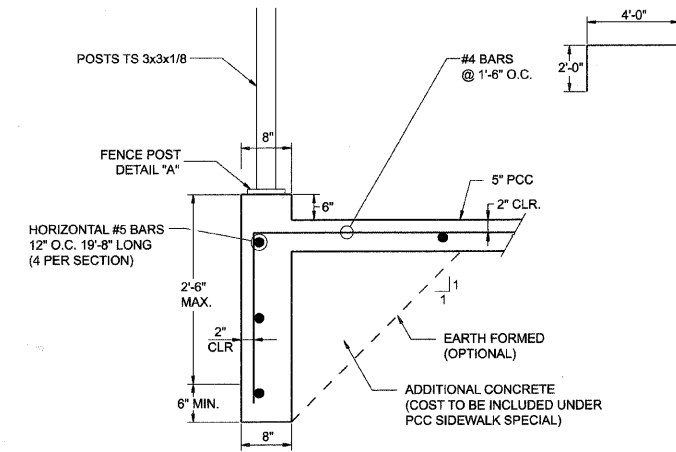
POST: Flat

MATERIAL: Galvanized Steel

FINISH: Powder Coat

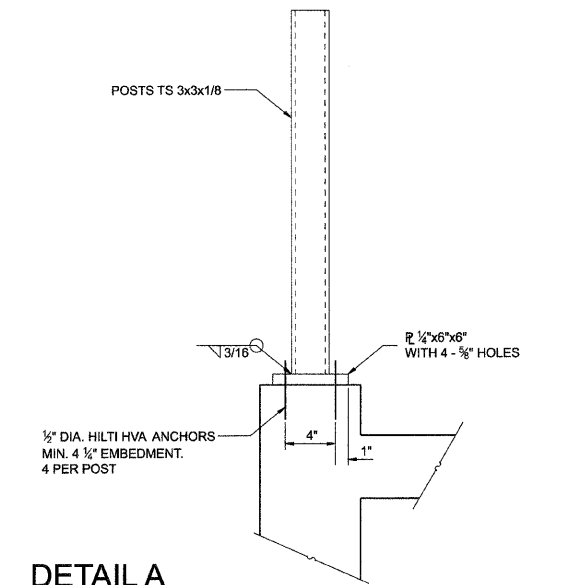
CONTACT: Monumental Iron Works
by Master Halco
Orange, CA
800.229.5615
www.FenceOnline.com

- NOTES:
1. Metric dimensions are nominal equivalents to U.S. dimensions.
 2. Specifications shown can be changed by Master Halco only.
 3. Footing width to be (4)x post width.
 4. See panel & post selection sheet for available post sizes.
 5. For installation on concrete see post detail.



PC CONC SIDEWALK, SPECIAL CROSS SECTION

SCALE: N.T.S.



DETAIL A

SCALE: N.T.S.



TYPICAL PLANTER DETAIL

SCALE: N.T.S.

MANUFACTURER: Custom Design Precast

PRODUCT: CDP3046

COLOR: Autumn Brown

SIZE: 36" Dia. x 24" H

FINISH: NaturaStone

CONTACT: Custom Design Precast, Inc.
4607-B Camp Phillips Road
Weston, WI 54476
888.355.1387
www.cdprecast.com



USER NAME = char bke	DESIGNED - MAC	REVISED -
PLOT SCALE = 1" = 20'	DRAWN - CMH	REVISED -
PLOT DATE = 1/6/2009	CHECKED - CMH	REVISED -
	DATE - 12/16/08	REVISED -

VILLAGE OF NILES

LANDSCAPE PLAN - DETAILS

SCALE: 1" = 20' SHEET NO. 7 OF 7 SHEETS STA. TO STA.

F.A.U. RTE.	SECTION	COUNTY	TOTAL SHEETS	SHEET NO.
3513	08-00107-00-PV	COOK	169	58
CONTRACT NO. 08-00107-00-PV			M -8003(723)	