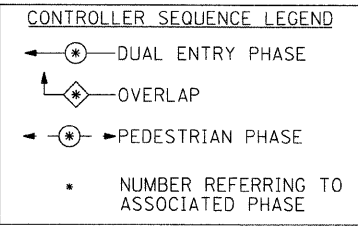
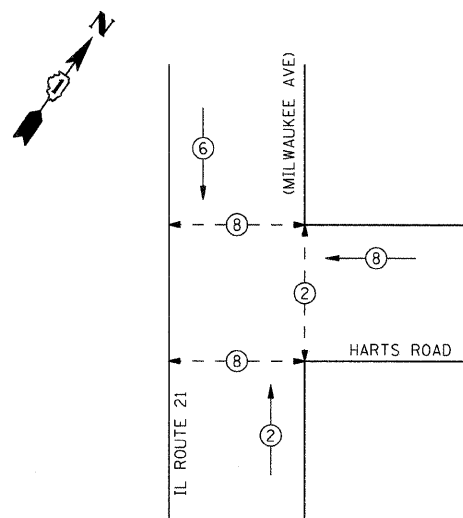
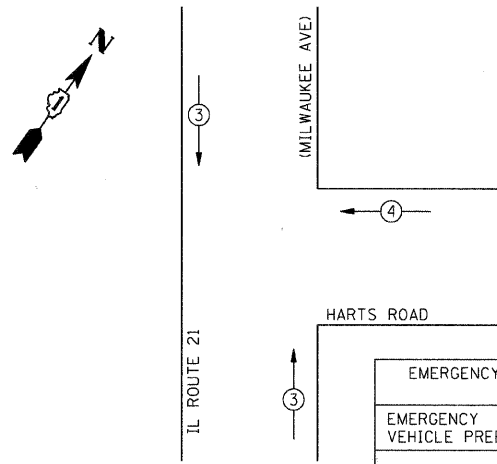


CONTROLLER SEQUENCE



EMERGENCY VEHICLE PREEMPTION SEQUENCE



EMERGENCY VEHICLE PREEMPTORS

EMERGENCY VEHICLE PREEMPTORS	3	4
MOVEMENT	↑	←

I.D.O.T TRAFFIC SIGNAL INSTALLATION ELECTRICAL SERVICE REQUIREMENTS

TYPE	NO. LAMPS	WATTAGE		% OPERATION	TOTAL WATTAGE
		INCAND.	LED		
SIGNAL (RED)	9		17	0.50	76.5
(YELLOW)	9		25	0.25	56.25
(GREEN)	9		15	0.25	33.75
ARROW (YELLOW)	0		12	0.10	0
ARROW (GREEN)	0		12	0.10	0
PED. SIGNAL	6		25	1.00	150
CONTROLLER	1		100	1.00	100
VIDEO SYSTEM	1		15	1.00	15
TOTAL =					431.5

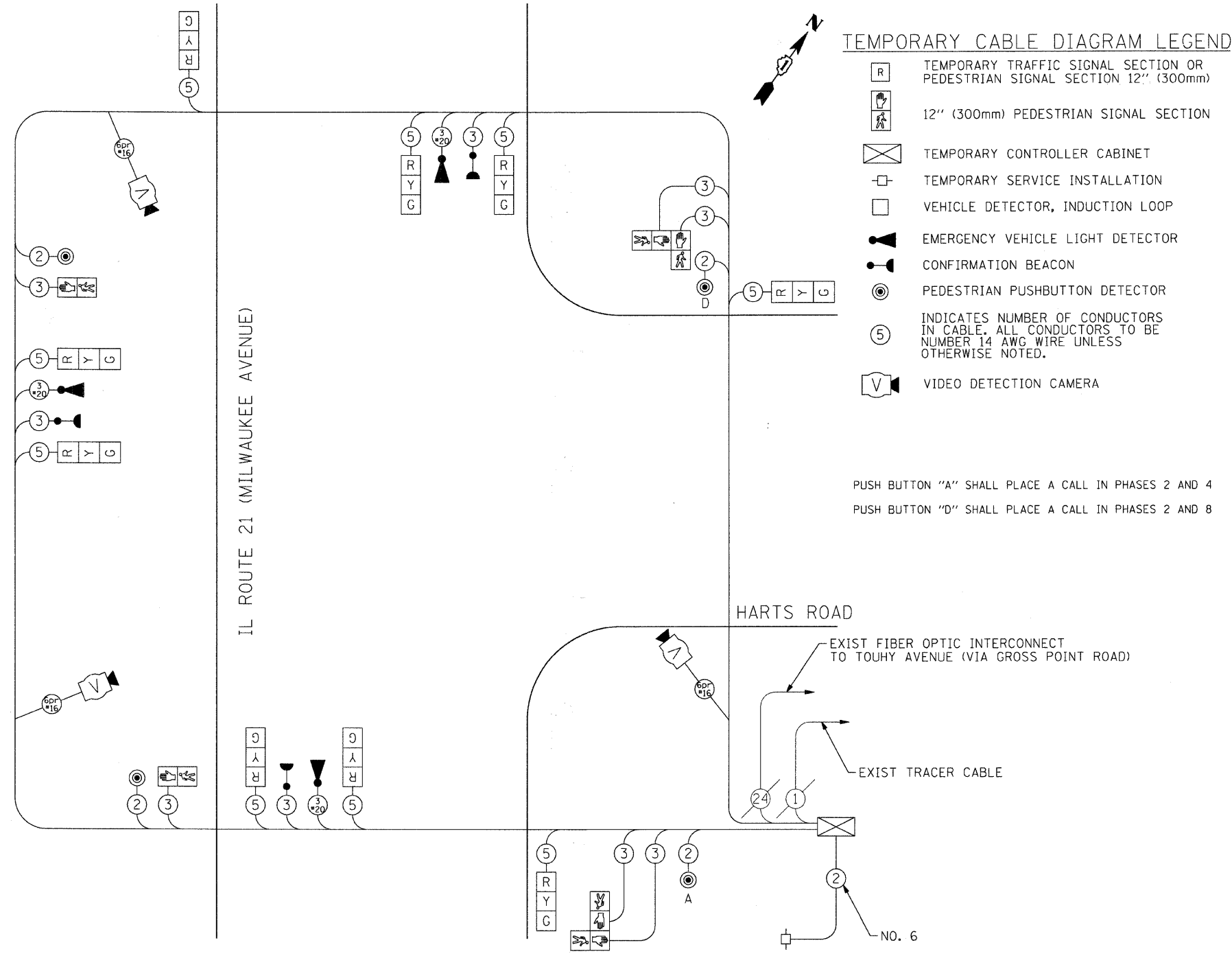
ENERGY COSTS TO: VILLAGE OF NILES
1000 CIVIC CENTER DRIVE
NILES IL 60714-3229

ENERGY SUPPLY CONTACT: MAUREEN RAYE
PHONE: (847) 816-5492
COMPANY: COMMONWEALTH EDISON

TEMPORARY CABLE DIAGRAM LEGEND

- ⊠ R ⊠ TEMPORARY TRAFFIC SIGNAL SECTION OR PEDESTRIAN SIGNAL SECTION 12" (300mm)
- ⊠ ⊠ 12" (300mm) PEDESTRIAN SIGNAL SECTION
- ⊠ ⊠ TEMPORARY CONTROLLER CABINET
- ⊠ ⊠ TEMPORARY SERVICE INSTALLATION
- ⊠ ⊠ VEHICLE DETECTOR, INDUCTION LOOP
- ⊠ ⊠ EMERGENCY VEHICLE LIGHT DETECTOR
- ⊠ ⊠ CONFIRMATION BEACON
- ⊠ ⊠ PEDESTRIAN PUSHBUTTON DETECTOR
- ⊠ ⊠ INDICATES NUMBER OF CONDUCTORS IN CABLE. ALL CONDUCTORS TO BE NUMBER 14 AWG WIRE UNLESS OTHERWISE NOTED.
- ⊠ ⊠ VIDEO DETECTION CAMERA

PUSH BUTTON "A" SHALL PLACE A CALL IN PHASES 2 AND 4
PUSH BUTTON "D" SHALL PLACE A CALL IN PHASES 2 AND 8



TEMPORARY CABLE PLAN
MAINTENANCE OF TRAFFIC STAGE I, II, III AND IV

NOTE:
THE TRAFFIC SIGNAL CONTROL EQUIPMENT FOR THIS PROJECT SHALL BE "ECONOLITE" TO MATCH THE EXISTING ADJACENT SYSTEM.

MILWAUKEE AVENUE IMPROVEMENTS
08023
08023-6011mpcab01.dgn