

TRAFFIC SIGNALS LEGEND

	PROPOSED	EXISTING
CONTROLLER		
SERVICE INSTALLATION		
SIGNAL HEAD		
SIGNAL HEAD WITH BACKPLATE		
SIGNAL HEAD, PEDESTRIAN		
SIGNAL POST		
MAST ARM ASSEMBLY AND POLE, STEEL		
MAST ARM ASSEMBLY AND POLE, ALUMINUM		
COMBINATION MAST ARM ASSEMBLY AND POLE, STEEL WITH LUMINAIRE		
HANDHOLE		
HEAVY DUTY HANDHOLE		
DOUBLE HANDHOLE		
G.S. CONDUIT IN TRENCH (T) OR PUSHED (P)		
PEDESTRIAN PUSHBUTTON DETECTOR		
DETECTOR LOOP		
CAST IRON JUNCTION BOX		
COMMON TRENCH		
UNIT DUCT		
EMERGENCY VEHICLE LIGHT DETECTOR		
CONFIRMATION BEACON		
SIGNAL HEAD OPTICALLY PROGRAMMED		
VIDEO DETECTION CAMERA		
TELEPHONE CONNECTION		
ILLUMINATED SIGN, FIBER OPTIC "NO RIGHT TURN"		
ILLUMINATED SIGN, FIBER OPTIC "NO LEFT TURN"		
CONDUIT SPLICE		
WOOD POLE		
RACEWAY FOR MAGNETIC DETECTOR, TYPE I OR TYPE II		
VEHICLE DETECTOR, NON COMPENSATED MAGNETIC TYPE		
RAILROAD CONTROL CABINET		
UNINTERRUPTABLE POWER SUPPLY		

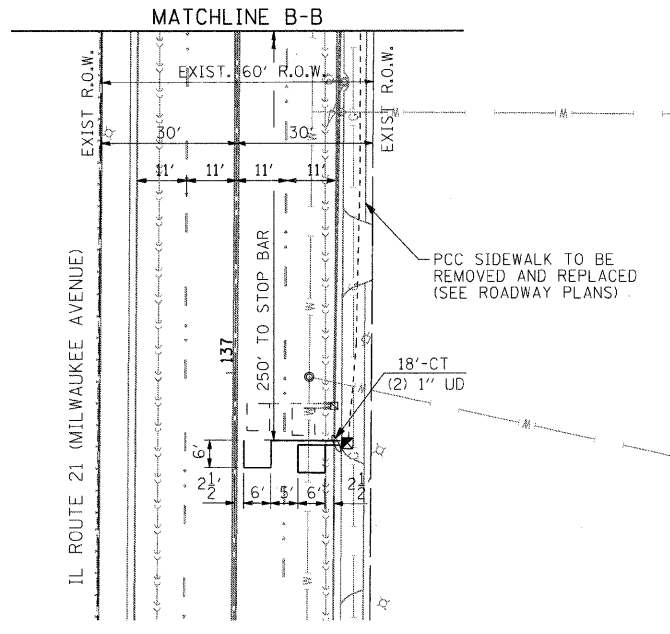
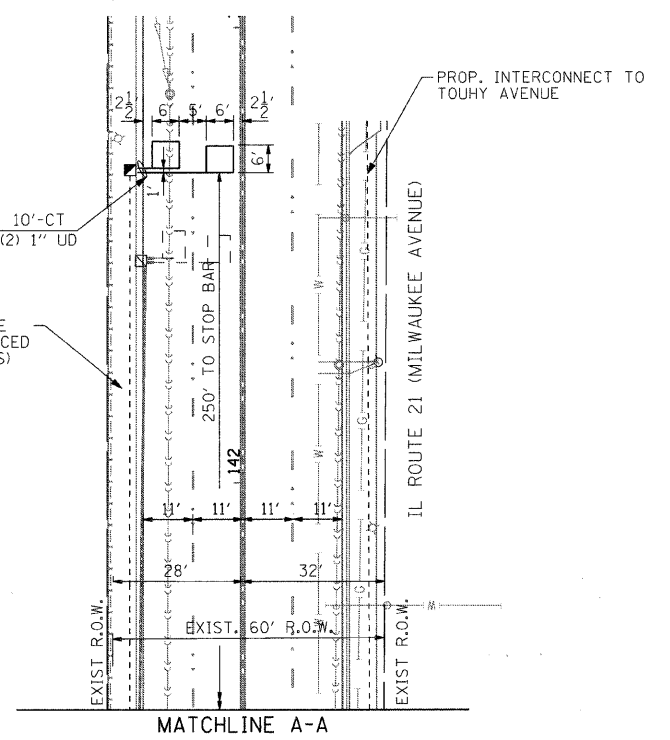
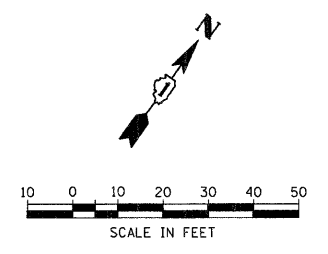
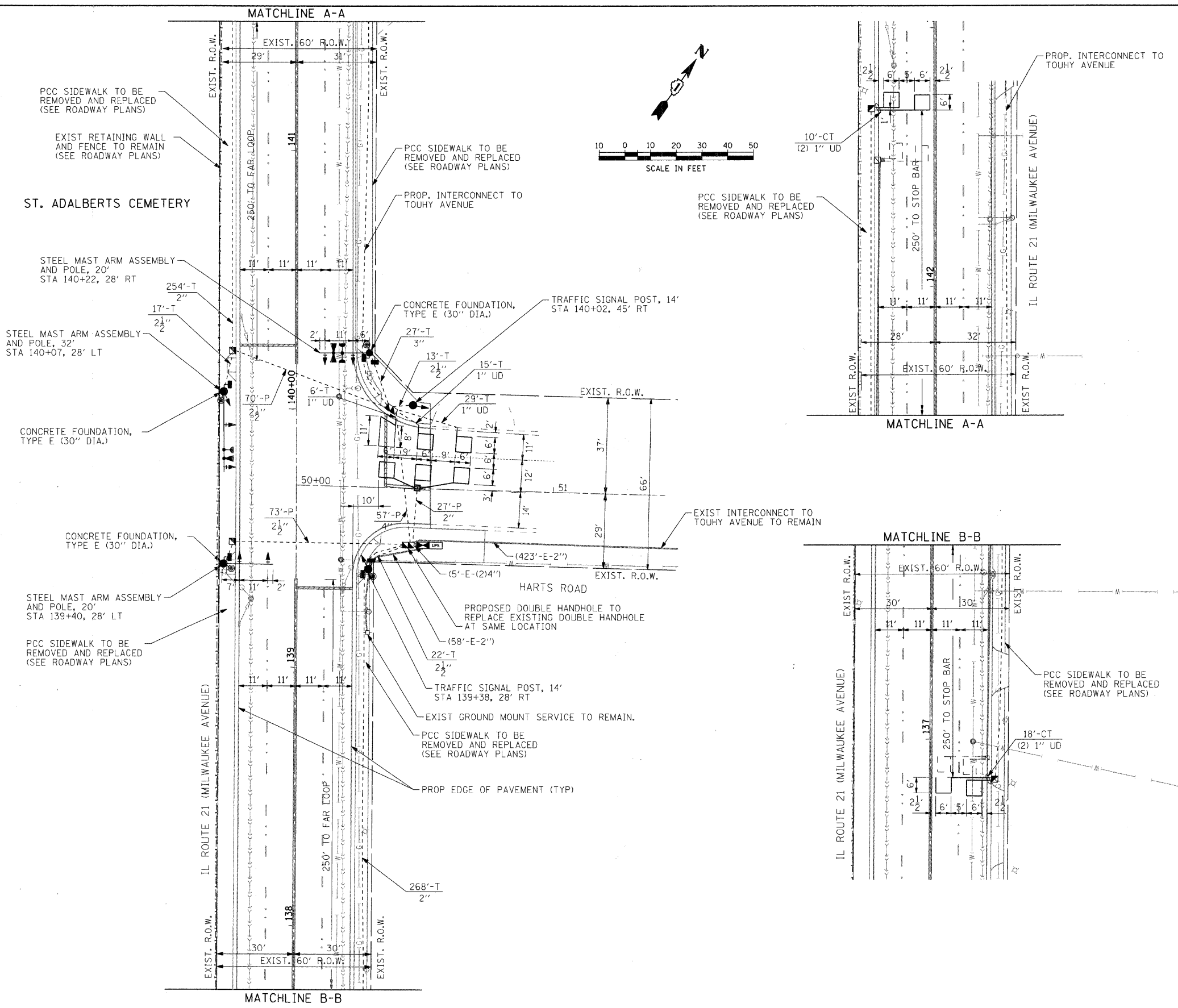
NOTE:
ALL NEW TRAFFIC SIGNAL EQUIPMENT INCLUDING POSTS AND MAST ARMS SHALL ARRIVE AT THE PROJECT SITE WITH ABLACK FACTORY FINISH IN ACCORDANCE WITH THE SPECIFICATIONS.

NOTE:
THE TRAFFIC SIGNAL CONTROL EQUIPMENT FOR THIS PROJECT SHALL BE "ECONOLITE" TO MATCH THE EXISTING ADJACENT SYSTEM.

RESTORATION OF WORK AREA
RESTORATION OF THE TRAFFIC SIGNAL WORK AREA SHALL BE INCIDENTAL TO THE RELATED PAY ITEM SUCH AS FOUNDATION, CONDUIT, HANDHOLE, TRENCH AND BACKFILL, ETC., AND NO EXTRA COMPENSATION SHALL BE ALLOWED. ALL ROADWAYS SURFACES SUCH AS SHOULDERS, MEDIANS, SIDEWALKS, PAVEMENT, ETC. SHALL BE REPLACED IN KIND. ALL DAMAGE TO MOWED LAWNS SHALL BE REPLACED WITH AN APPROVED SOD AND ALL DAMAGE TO UNMOWED FIELDS SHALL BE SEEDED IN ACCORDANCE WITH STANDARD SPECIFICATIONS 252 AND 250 RESPECTIVELY.

NOTE:
STOP BARS ARE NOT TO BE PLACED PRIOR TO THE PROPOSED TRAFFIC SIGNALS BEING OPERATIONAL. THEY MUST BE IN PLACE, HOWEVER, AT THE TIME OF TURN-ON.

NOTE:
ALL EXISTING STREET NAME SIGNS ARE TO BE REUSED, IF NECESSARY, THE SIGN WILL BE REPLACED BY THE VILLAGE OF NILES AT A LATER DATE.



<p>SEC Group, Inc. Engineering Surveying Planning Landscape Architecture McHenry • Yorkville • New Lenox • Chicago www.secgroupinc.com</p>	USER NAME = char-uke PLOT SCALE = 20 PLOT DATE = 12/22/2008	DESIGNED - JJS DRAWN - JJS CHECKED - APS DATE - 12/16/08	REVISED - REVISED - REVISED - REVISED -	VILLAGE OF NILES		TRAFFIC SIGNAL INSTALLATION PLAN MILWAUKEE AVENUE AT HARTS ROAD		F.A.U. RTE. 3513 SECTION 08-00107-00-PV COUNTY COOK TOTAL SHEETS 169 SHEET NO. 65 CONTRACT NO. M-8003(723)
	SCALE: 20 SHEET NO. 8 OF 16 SHEETS STA. TO STA.				FED. ROAD DIST. NO. ILLINOIS FED. AID PROJECT M-8003(723)			

MILWAUKEE AVENUE IMPROVEMENTS
080233
080233-601perm1q01.dgn