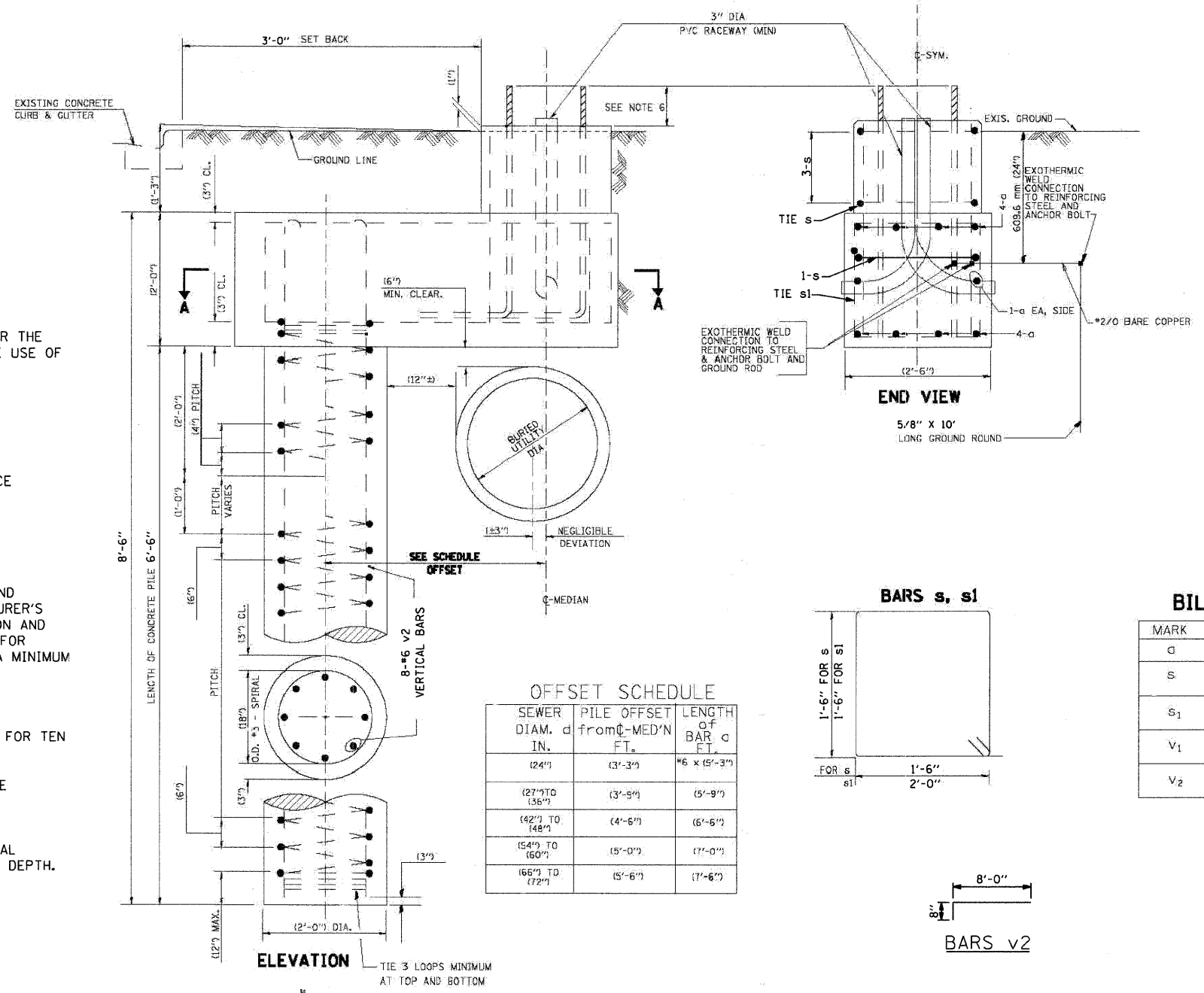
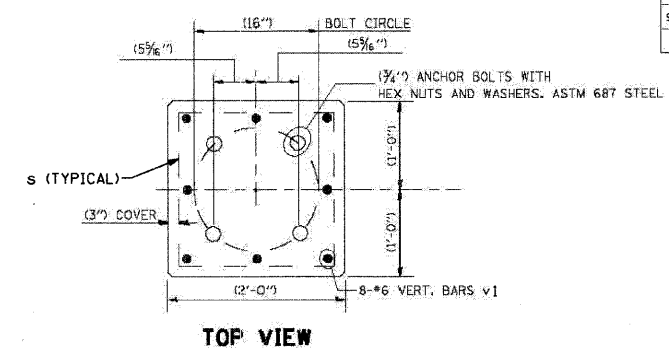
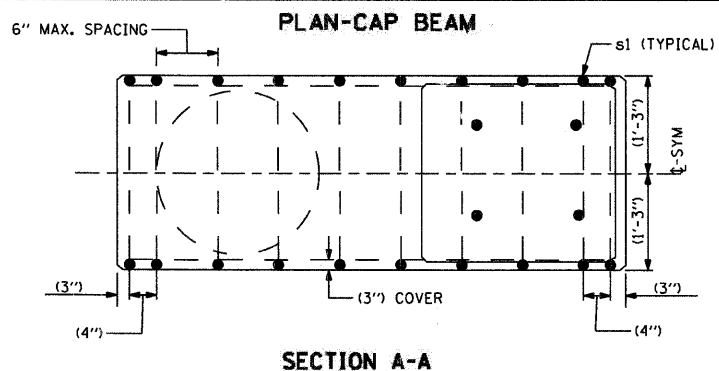


| | | | |
|--------------|--------|--|-----------|
| SECTION | COUNTY | TOTAL SHEETS | SHEET NO. |
| 34 | KANE | 21 | 16 |
| STA. TO STA. | | FED. ROAD DIST. NO. / ALIEN'S / FED. AID PROJECT | |



NOTES

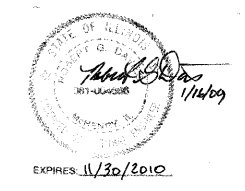
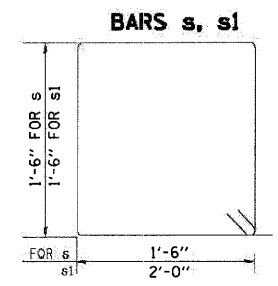
1. THE CONTRACTOR SHALL IDENTIFY IN FIELD BURIED UTILITY CONFLICT FOR THE INSTALLATION OF CONCRETE FOUNDATION. THE ENGINEER SHALL DETERMINE USE OF OFFSET FOUNDATION DESIGN AND LOCATION FOR PILE INSTALLATION.
2. THE SHAFT FOR PILE SHALL BE MADE WITH AUGER, (24") IN DIAMETER.
3. THE ANCHOR SHALL BE TACK WELDED TYPE BOLT OR HOOK TYPE BOLT. COLD BENDING OF THE HOOK BOLT WILL NOT BE ALLOWED.
4. THE ANCHOR BOLTS AND RACEWAYS SHALL BE PROPERLY SECURED IN PLACE BEFORE THE CONCRETE IS PLACED IN THE FORM.
5. THE ENTIRE LENGTH OF THE ANCHOR BOLTS AS WELL AS THE NUTS AND WASHERS SHALL BE HOT DIP GALVANAIZED IN ACCORDANCE WITH THE REQUIREMENTS OF ASTM DESIGNATION A 153.
6. THE CONTRACTOR SHALL COORDINATE TOTAL LENGTH OF ANCHOR BOLTS AND EXTENSION ABOVE TOP OF FOUNDATION WITH THE LIGHT POLE MANUFACTURER'S REQUIREMENTS. THE CONTRACTOR SHALL CONFIRM ANCHOR BOLT EXTENSION AND LENGTH WITH WITH ENGINEER. MINIMUM ACCEPTABLE EMBEDMENT LENTH FOR ANCHOR BOLTS CONFORMING TO NOTE 5 IS 36". ANCHOR ROD SHALL BE A MINIMUM OF 3/4" IN DIAMETER CONFORMING TO ASTM F 1554 (GR. 105).
7. RACEWAYS SHALL PROJECT (1") ABOVE THE TOP OF THE FOUNDATION.
8. CONCRETE SHALL BE CLASS "SI". CONCRETE FOUNDATION MUST BE CURED FOR TEN (10) DAYS BEFORE THE LIGHT STANDARD IS ERECTED.
9. THE CABLE TRENCH SHALL BE BACKFILLED AND FIRMLY COMPACTED BEFORE THE LIGHT POLE IS ERECTED.
10. FOUNDATION DEPTH SHOWN ASSUMES MEDIUM CLAY OR SAND. THE ENGINEER SHALL DETERMINE ACCEPTABILITY. IN THE EVENT SOFT MATERIAL OR FILL IS ENCOUNTERED, ENGINEER MAY REQUIRE INCREASED FOUNDATION DEPTH.

OFFSET SCHEDULE

| SEWER DIAM. d IN. | PILE OFFSET from G-MED'N FT. | LENGTH of BAR a FT. |
|-------------------|------------------------------|---------------------|
| (24") | (3'-3") | *6 x (5'-3") |
| (27") TO (36") | (3'-5") | (5'-9") |
| (42") TO (48") | (4'-6") | (6'-6") |
| (54") TO (60") | (5'-0") | (7'-0") |
| (66") TO (72") | (5'-6") | (7'-6") |

BILL OF MATERIAL

| MARK | NO. | SIZE | LENGTH | SHAPE |
|----------------|-----|------|-----------|-------|
| a | 10 | 6 | SEE BELOW | — |
| s | 4 | 4 | (6'-6") | □ |
| s ₁ | 17 | 4 | (7'-6") | □ |
| v ₁ | 8 | 6 | (2'-9") | — |
| v ₂ | 8 | 6 | (8'-8") | └ |



| | | |
|-----------------------|-----------------|-----------|
| USER NAME = charlke | DESIGNED - BDL | REVISED - |
| PLOT SCALE = NTS | DRAWN - CMH | REVISED - |
| PLOT DATE = 1/16/2009 | CHECKED - APS | REVISED - |
| | DATE - 12/16/08 | REVISED - |

VILLAGE OF NILES

ORNAMENTAL LIGHTING OFFSET FOUNDATION

SCALE: NTS SHEET NO. 8 OF 13 SHEETS STA. TO STA.

| | | | | |
|---|----------------|--------|--------------|-----------|
| F.A.U. RTE. | SECTION | COUNTY | TOTAL SHEETS | SHEET NO. |
| 3513 | 08-00107-01-PV | COOK | 169 | 81 |
| CONTRACT NO. | | | | |
| FED. ROAD DIST. NO. [ILLINOIS] FED. AID PROJECT M-8003(723) | | | | |