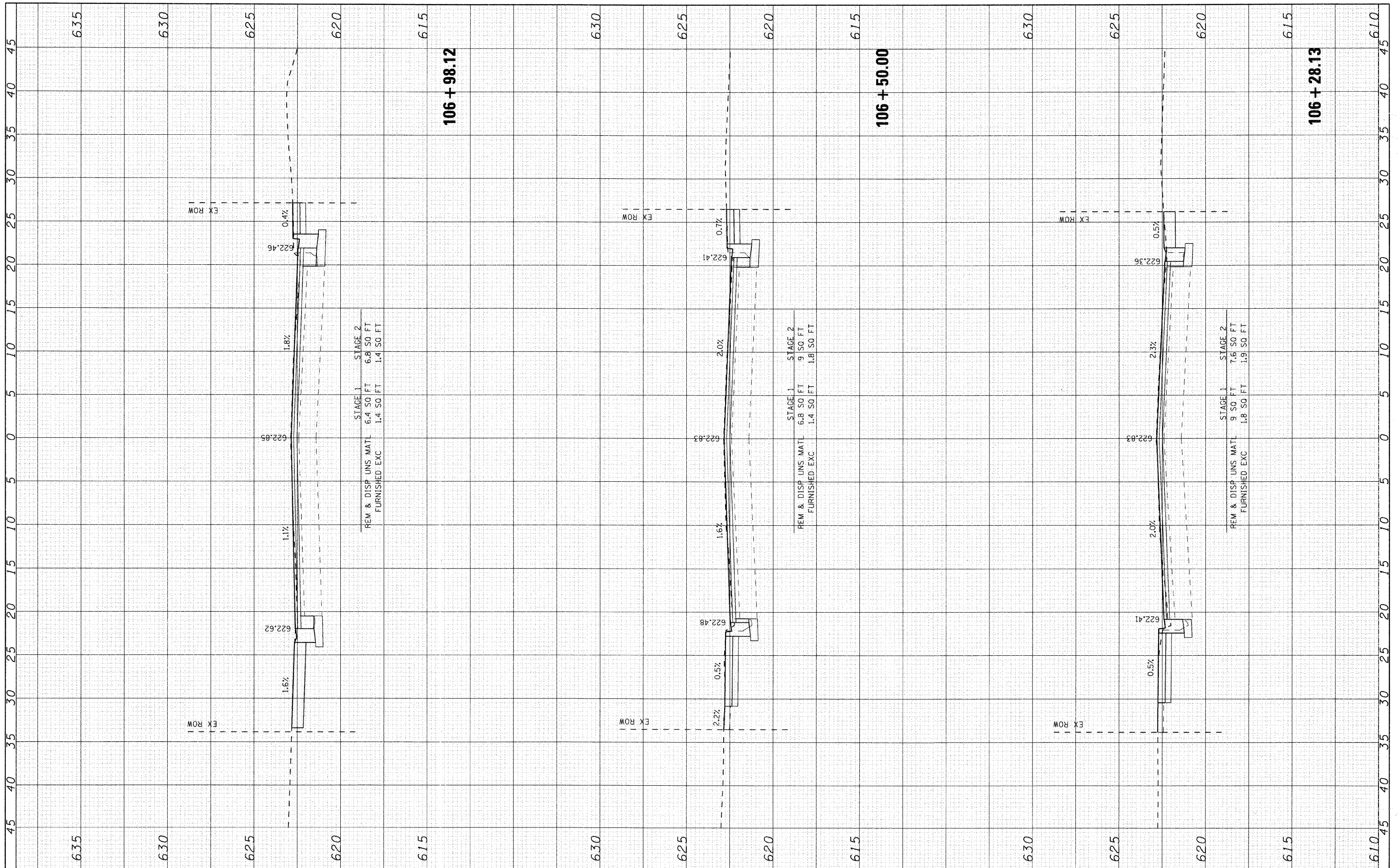


FINAL SURVEY	DATE
SURVEYED	BY
NOTE BOOK	NO.
TEMPLATE	AREAS CHECKED
AREAS	AREAS CHECKED

ORIGINAL SURVEY	DATE
SURVEYED	BY
NOTE BOOK	NO.
TEMPLATE	AREAS CHECKED
AREAS	AREAS CHECKED



**SEC Group, Inc.**  
 Illinois Professional Seals Firm # 04-000700  
 Engineering  
 Surveying  
 Landscape Architecture  
 McHenry • Yorkville • New Lenox • Chicago  
 www.secgroupinc.com

USER NAME = charlke	DESIGNED - CMH	REVISED -
	DRAWN - CMH	REVISED -
PLOT SCALE = 5	CHECKED - JLP	REVISED -
PLOT DATE = 12/22/2008	DATE - 12/16/08	REVISED -

<b>VILLAGE OF NILES</b>	
-------------------------	--

<b>MILWAUKEE AVENUE CROSS SECTIONS</b>			
SCALE: 5	SHEET NO. 3 OF 70 SHEETS	STA. 106+28.13 TO STA. 106+98.12	

F.A.U. RTE.	SECTION	COUNTY	TOTAL SHEETS	SHEET NO.
3513	08-00107-00#PV	COOK	169	102
FED. ROAD DIST. NO.		ILLINOIS FED. AID PROJECT	CONTRACT NO. M-8003(723)	

MILWAUKEE AVENUE IMPROVEMENTS  
 08023-XSC-Milwaukee.dgn