

F.A. RTE.	SECTION	COUNTY	TOTAL SHEETS	SHEET NO.
	06-00055-00-BT	DUPAGE	27	5

CONTRACT NO: 63113

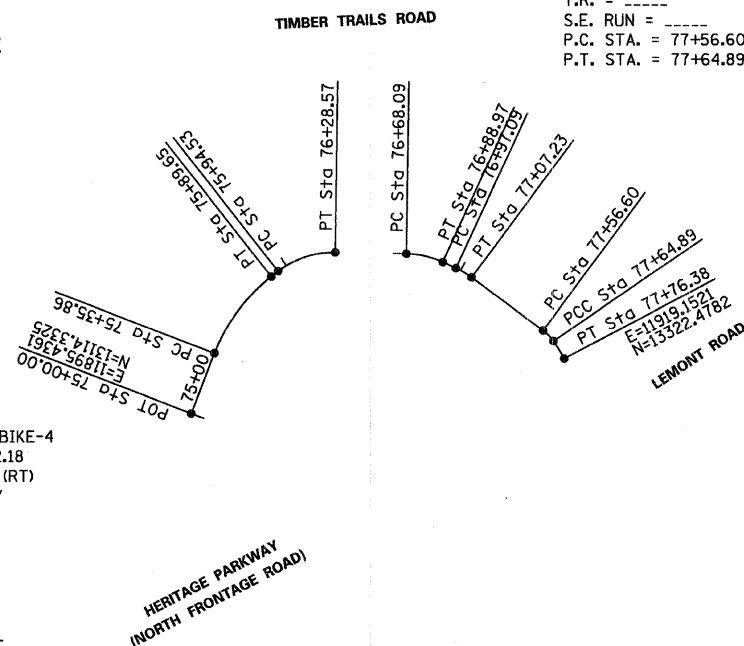
PROP. CURVE NWBIKE-1
 PI STA. = 75+63.42
 $\Delta = 30^\circ 49' 15''$ (RT)
 D = 57' 17' 45"
 R = 100.00'
 T = 27.56'
 L = 53.79'
 E = 3.73'
 $e =$ -----
 T.R. = -----
 S.E. RUN = -----
 P.C. STA. = 75+35.86
 P.T. STA. = 75+89.65

PROP. CURVE NWBIKE-2
 PI STA. = 76+12.24
 $\Delta = 39^\circ 00' 42''$ (RT)
 D = 114' 35' 30"
 R = 50.00'
 T = 17.71'
 L = 34.04'
 E = 3.04'
 $e =$ -----
 T.R. = -----
 S.E. RUN = -----
 P.C. STA. = 75+94.53
 P.T. STA. = 76+28.57

PROP. CURVE NWBIKE-5
 PI STA. = 77+60.79
 $\Delta = 19^\circ 00' 00''$ (RT)
 D = 229' 10' 59"
 R = 25.00'
 T = 4.18'
 L = 8.29'
 E = 0.35'
 $e =$ -----
 T.R. = -----
 S.E. RUN = -----
 P.C. STA. = 77+56.60
 P.T. STA. = 77+64.89

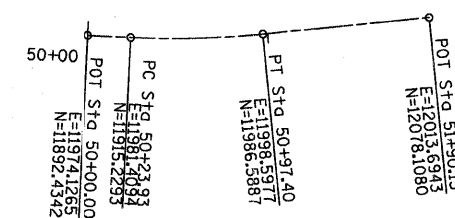
PROP. CURVE NWBIKE-6
 PI STA. = 77+70.65
 $\Delta = 6^\circ 35' 02''$ (RT)
 D = 57' 17' 45"
 R = 100.00'
 T = 5.75'
 L = 11.49'
 E = 0.17'
 $e =$ -----
 T.R. = -----
 S.E. RUN = -----
 P.C. STA. = 77+64.89
 P.T. STA. = 77+76.38

PROP. CURVE NBBIKE-1-1
 PI STA. = 50+60.73
 $\Delta = 8^\circ 21' 06''$ (LT)
 D = 11' 22' 06"
 R = 504.00'
 T = 36.80'
 L = 73.47'
 E = 1.34'
 $e =$ -----
 T.R. = -----
 S.E. RUN = -----
 P.C. STA. = 50+23.93
 P.T. STA. = 50+97.40



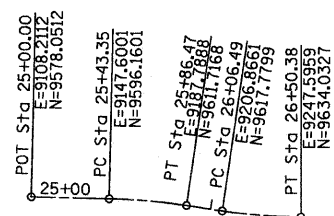
PROP. CURVE NWBIKE-3
 PI STA. = 76+78.68
 $\Delta = 23^\circ 55' 02''$ (RT)
 D = 114' 35' 30"
 R = 50.00'
 T = 10.59'
 L = 20.87'
 E = 1.11'
 $e =$ -----
 T.R. = -----
 S.E. RUN = -----
 P.C. STA. = 76+68.09
 P.T. STA. = 76+88.97

PROP. CURVE NWBIKE-4
 PI STA. = 77+02.18
 $\Delta = 11^\circ 37' 32''$ (RT)
 D = 114' 35' 30"
 R = 50.00'
 T = 5.09'
 L = 10.15'
 E = 0.26'
 $e =$ -----
 T.R. = -----
 S.E. RUN = -----
 P.C. STA. = 76+97.09
 P.T. STA. = 77+07.23



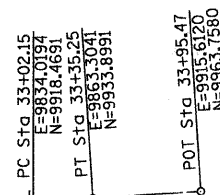
SEGMENT A (NORTH BIKE PATH)

SEGMENT B (MIDDLE BIKE PATH)



PROP. CURVE SBIKE_R-1
 PI STA. = 25+64.94
 $\Delta = 7^\circ 03' 33''$ (RT)
 D = 16' 22' 13"
 R = 350.00'
 T = 21.59'
 L = 43.12'
 E = 0.67'
 $e =$ -----
 T.R. = -----
 S.E. RUN = -----
 P.C. STA. = 25+43.35
 P.T. STA. = 25+86.47

PROP. CURVE SBIKE_R-2
 PI STA. = 26+28.48
 $\Delta = 8^\circ 14' 42''$ (LT)
 D = 18' 47' 08"
 R = 305.00'
 T = 21.98'
 L = 43.89'
 E = 0.79'
 $e =$ -----
 T.R. = -----
 S.E. RUN = -----
 P.C. STA. = 26+06.49
 P.T. STA. = 26+50.38



PROP. CURVE SBIKE_R-3
 PI STA. = 33+18.71
 $\Delta = 3^\circ 45' 46''$ (LT)
 D = 11' 22' 06"
 R = 504.00'
 T = 16.56'
 L = 33.10'
 E = 0.27'
 $e =$ -----
 T.R. = -----
 S.E. RUN = -----
 P.C. STA. = 33+02.15
 P.T. STA. = 33+35.25

SEGMENT C (SOUTH BIKE PATH)

BENCHMARKS

DuPage County Benchmark # DGS08001

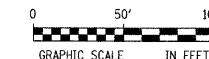
Standard DuPage County Benchmark located at the southeast corner of 97th Street and Westgate Road; 94 feet east of the centerline of Lemont Road and 63 feet south of the centerline of Westgate Road. Benchmark is 49 feet southeast of a traffic control light. Elevation 754.5428 (NGVD 29) Elevation 754.96 (Village of Woodridge Datum)

Site Benchmark #1

Chiseled "X" on the northwest flange bolt of the fire hydrant located at the northeast corner of Heritage Parkway and Westminster Drive. Elevation 738.47 (Village of Woodridge Datum)

Site Benchmark #2

Chiseled "X" on the northeast flange bolt of the fire hydrant located at the end of the existing bike trail, on the north side of Heritage Parkway, at approximately Sta. 7+98. Elevation 734.36 (Village of Woodridge Datum)



REVISIONS	
NAME	DATE

URS 100 S. WACKER DR., SUITE 500 TEL (312) 939-1000
 CHICAGO IL, 60606 FAX (312) 939-4198

VILLAGE OF WOODRIDGE
 HERITAGE BIKEWAY

ALIGNMENT AND TIES PLAN

SCALE: _____ DRAWN BY: YOO
 DATE: _____ CHECKED BY: DDL