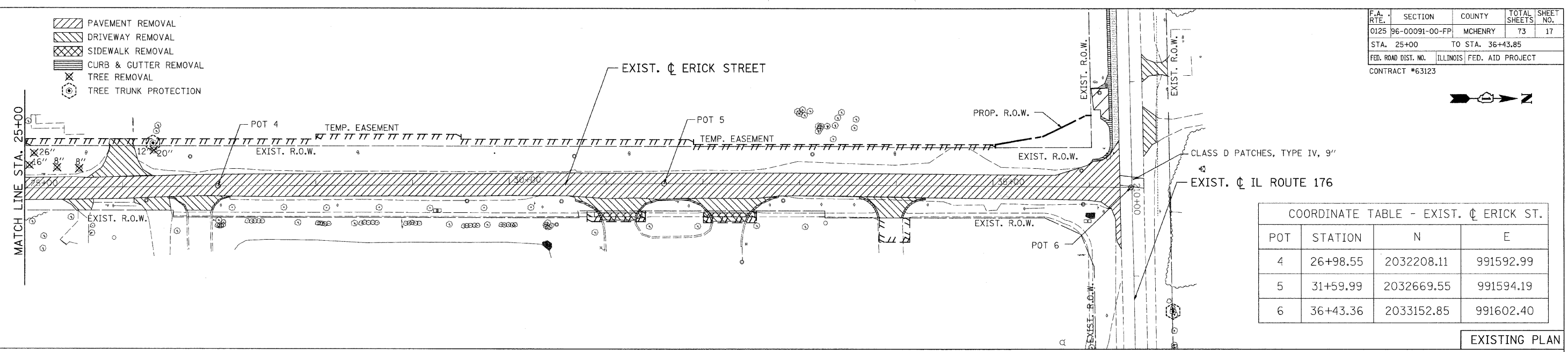


F.A. RTE.	SECTION	COUNTY	TOTAL SHEETS	SHEET NO.
0125	96-00091-00-FP	MCHENRY	73	17
STA. 25+00		TO STA. 36+43.85		
FED. ROAD DIST. NO.	ILLINOIS	FED. AID PROJECT		
CONTRACT #63123				

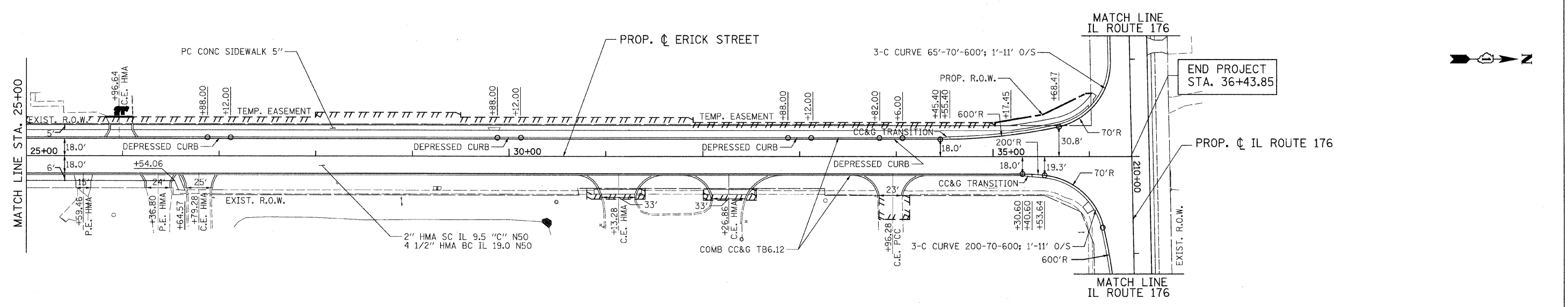
- PAVEMENT REMOVAL
- DRIVEWAY REMOVAL
- SIDEWALK REMOVAL
- CURB & GUTTER REMOVAL
- TREE REMOVAL
- TREE TRUNK PROTECTION



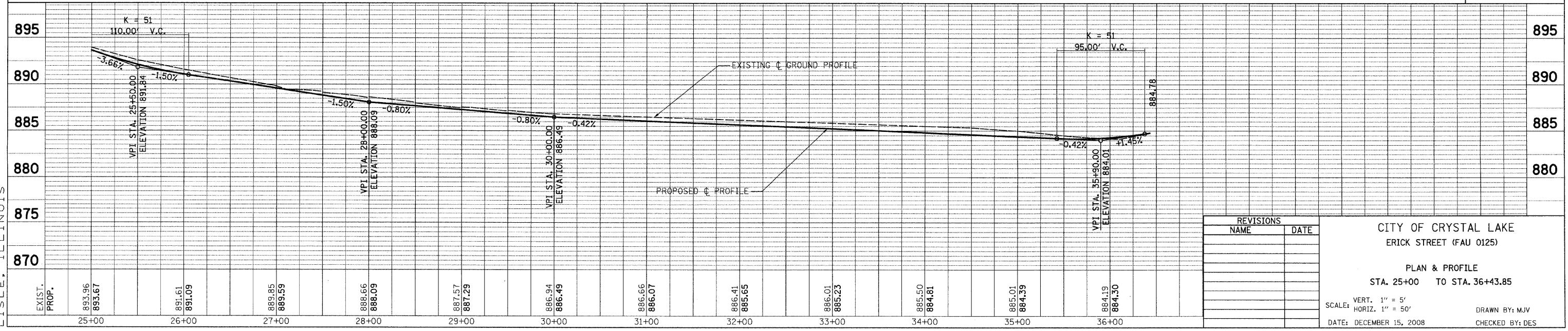
COORDINATE TABLE - EXIST. CL ERICK ST.

POT	STATION	N	E
4	26+98.55	2032208.11	991592.99
5	31+59.99	2032669.55	991594.19
6	36+43.36	2033152.85	991602.40

EXISTING PLAN



PROPOSED PLAN



REVISIONS	
NAME	DATE

CITY OF CRYSTAL LAKE
ERICK STREET (FAU 0125)

PLAN & PROFILE
STA. 25+00 TO STA. 36+43.85

SCALE: VERT. 1" = 5'
HORIZ. 1" = 50'

DATE: DECEMBER 15, 2008

DRAWN BY: MJV
CHECKED BY: DES

DATE	
BY	
SAVED	
NOTE BOOK	
ALIGNMENT CHECKED	
PAV. FILE NAME	

DATE	
BY	
REVISION	
GRADES CHECKED	
STRUCTURE NOTATIONS OK'D	

