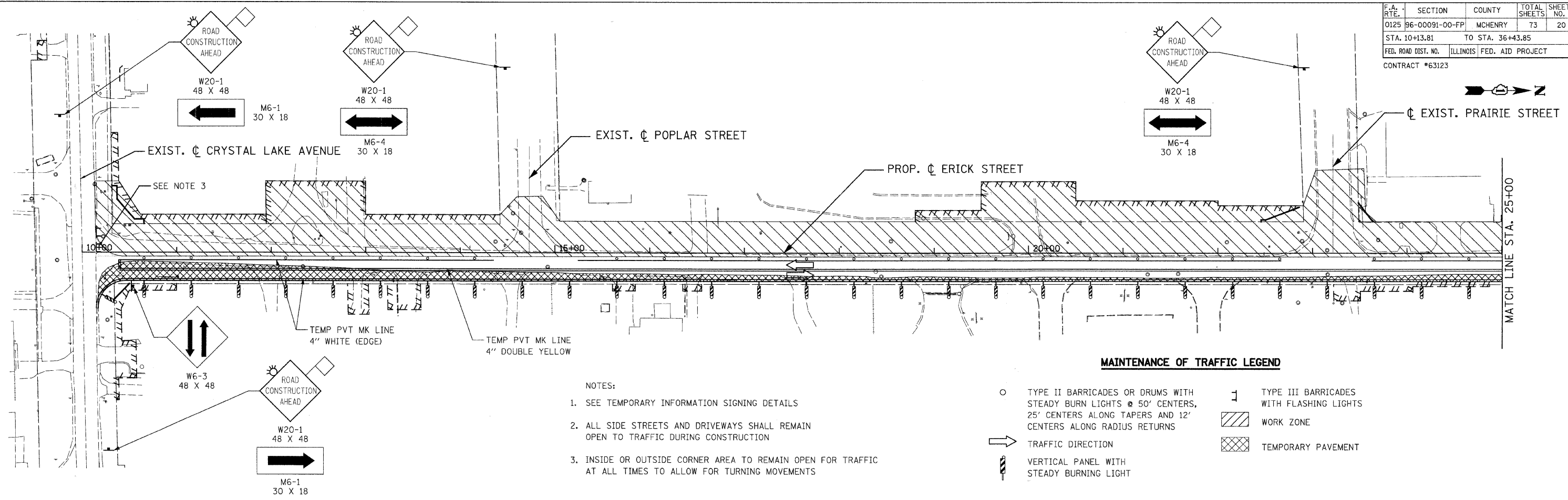


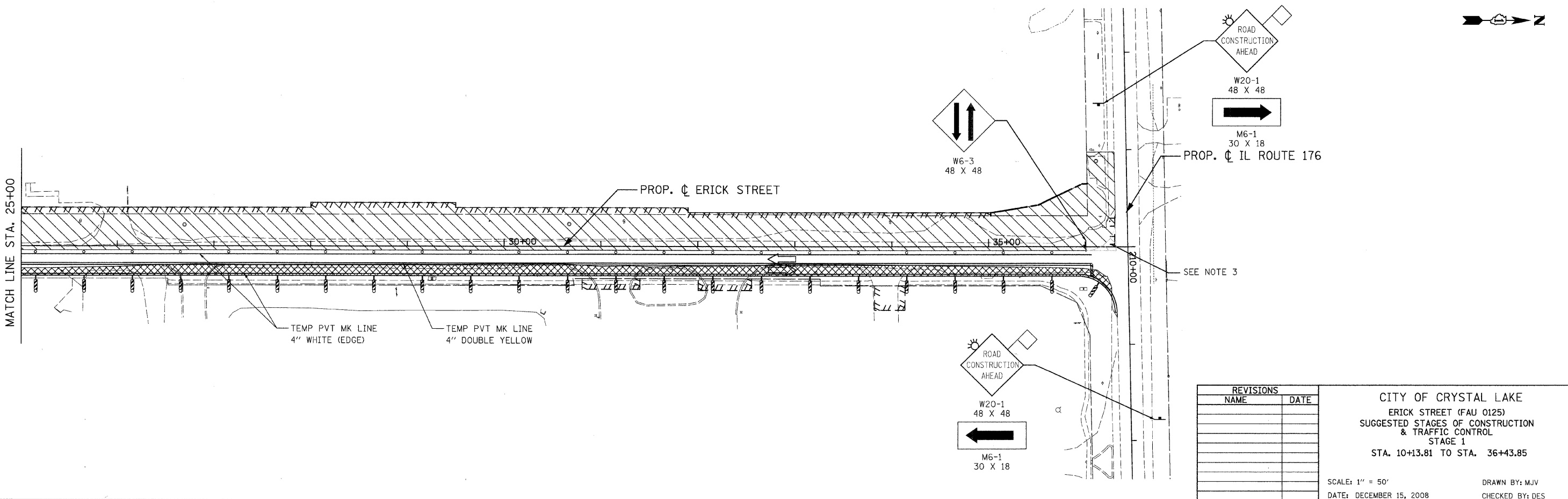
F.A. RTE.	SECTION	COUNTY	TOTAL SHEETS	SHEET NO.
0125	96-00091-00-FP	MCHENRY	73	20
STA. 10+13.81		TO STA. 36+43.85		
FED. ROAD DIST. NO.		ILLINOIS FED. AID PROJECT		
CONTRACT #63123				



- NOTES:
- SEE TEMPORARY INFORMATION SIGNING DETAILS
  - ALL SIDE STREETS AND DRIVEWAYS SHALL REMAIN OPEN TO TRAFFIC DURING CONSTRUCTION
  - INSIDE OR OUTSIDE CORNER AREA TO REMAIN OPEN FOR TRAFFIC AT ALL TIMES TO ALLOW FOR TURNING MOVEMENTS

**MAINTENANCE OF TRAFFIC LEGEND**

○	TYPE II BARRICADES OR DRUMS WITH STEADY BURN LIGHTS @ 50' CENTERS, 25' CENTERS ALONG TAPERS AND 12' CENTERS ALONG RADIUS RETURNS	⏏	TYPE III BARRICADES WITH FLASHING LIGHTS
➔	TRAFFIC DIRECTION	▨	WORK ZONE
⏏	VERTICAL PANEL WITH STEADY BURNING LIGHT	▩	TEMPORARY PAVEMENT



REVISIONS	
NAME	DATE

CITY OF CRYSTAL LAKE  
 ERICK STREET (FAU 0125)  
 SUGGESTED STAGES OF CONSTRUCTION & TRAFFIC CONTROL  
 STAGE 1  
 STA. 10+13.81 TO STA. 36+43.85

SCALE: 1" = 50'  
 DATE: DECEMBER 15, 2008

DRAWN BY: MJV  
 CHECKED BY: DES

**PATRICK**  
 ENGINEERING INC.  
 LISLE, ILLINOIS