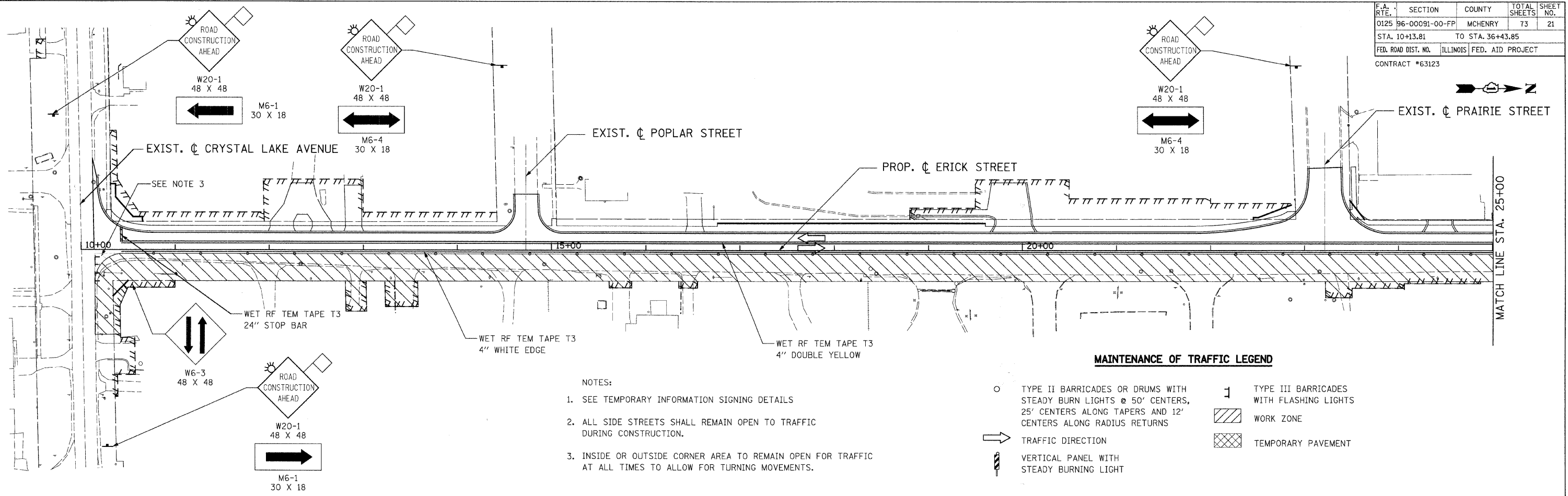


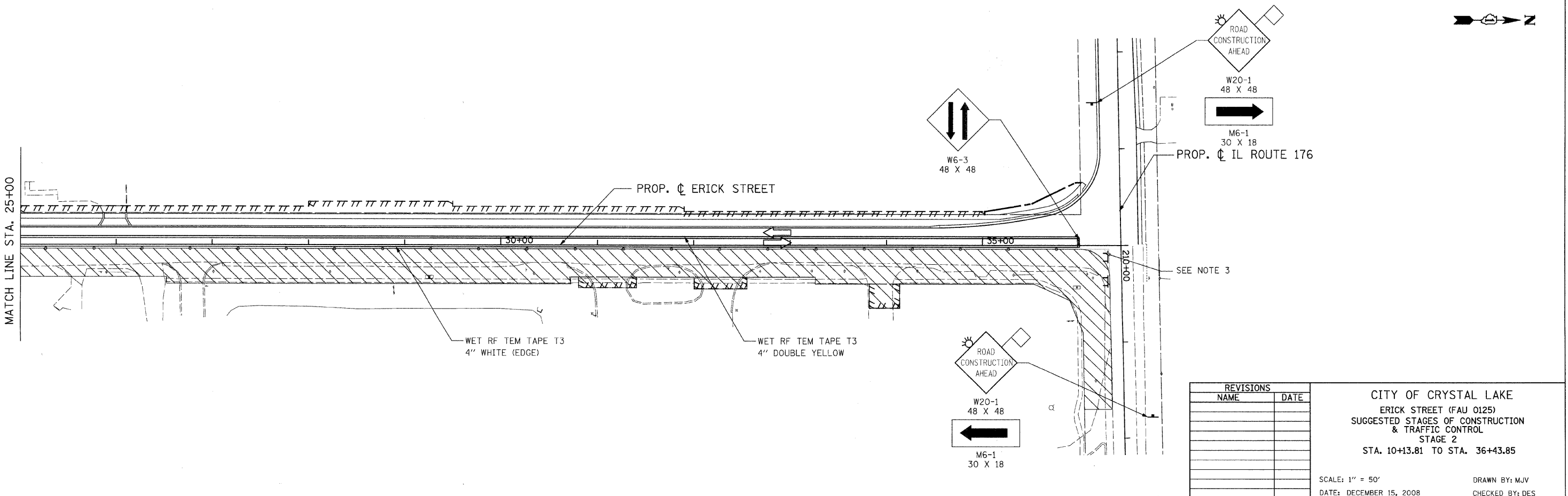
F.A. RTE.	SECTION	COUNTY	TOTAL SHEETS	SHEET NO.
0125 96-00091-00-FP		MCHENRY	73	21
STA. 10+13.81		TO STA. 36+43.85		
FED. ROAD DIST. NO.		ILLINOIS FED. AID PROJECT		
CONTRACT #63123				



- NOTES:
1. SEE TEMPORARY INFORMATION SIGNING DETAILS
 2. ALL SIDE STREETS SHALL REMAIN OPEN TO TRAFFIC DURING CONSTRUCTION.
 3. INSIDE OR OUTSIDE CORNER AREA TO REMAIN OPEN FOR TRAFFIC AT ALL TIMES TO ALLOW FOR TURNING MOVEMENTS.

MAINTENANCE OF TRAFFIC LEGEND

○	TYPE II BARRICADES OR DRUMS WITH STEADY BURN LIGHTS @ 50' CENTERS, 25' CENTERS ALONG TAPERS AND 12' CENTERS ALONG RADIUS RETURNS	⌋	TYPE III BARRICADES WITH FLASHING LIGHTS
→	TRAFFIC DIRECTION	▨	WORK ZONE
⌋	VERTICAL PANEL WITH STEADY BURNING LIGHT	▩	TEMPORARY PAVEMENT



REVISIONS	
NAME	DATE

CITY OF CRYSTAL LAKE
 ERICK STREET (FAU 0125)
 SUGGESTED STAGES OF CONSTRUCTION & TRAFFIC CONTROL
 STAGE 2
 STA. 10+13.81 TO STA. 36+43.85

SCALE: 1" = 50'
 DATE: DECEMBER 15, 2008

DRAWN BY: MJV
 CHECKED BY: DES

