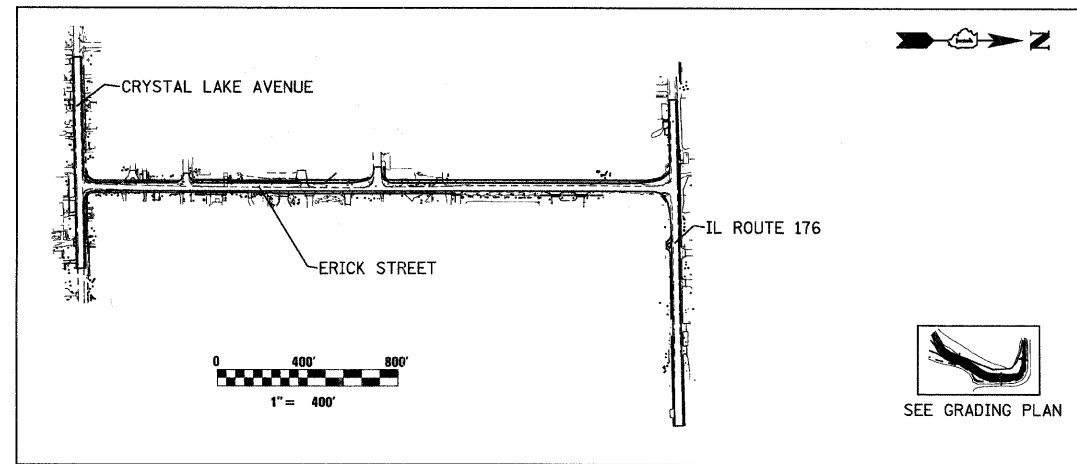
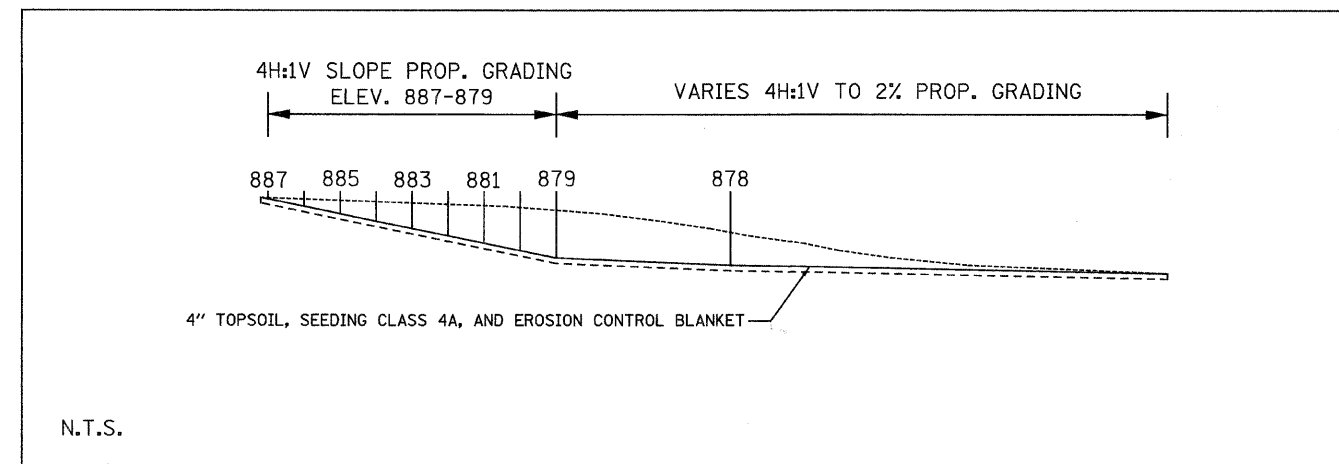


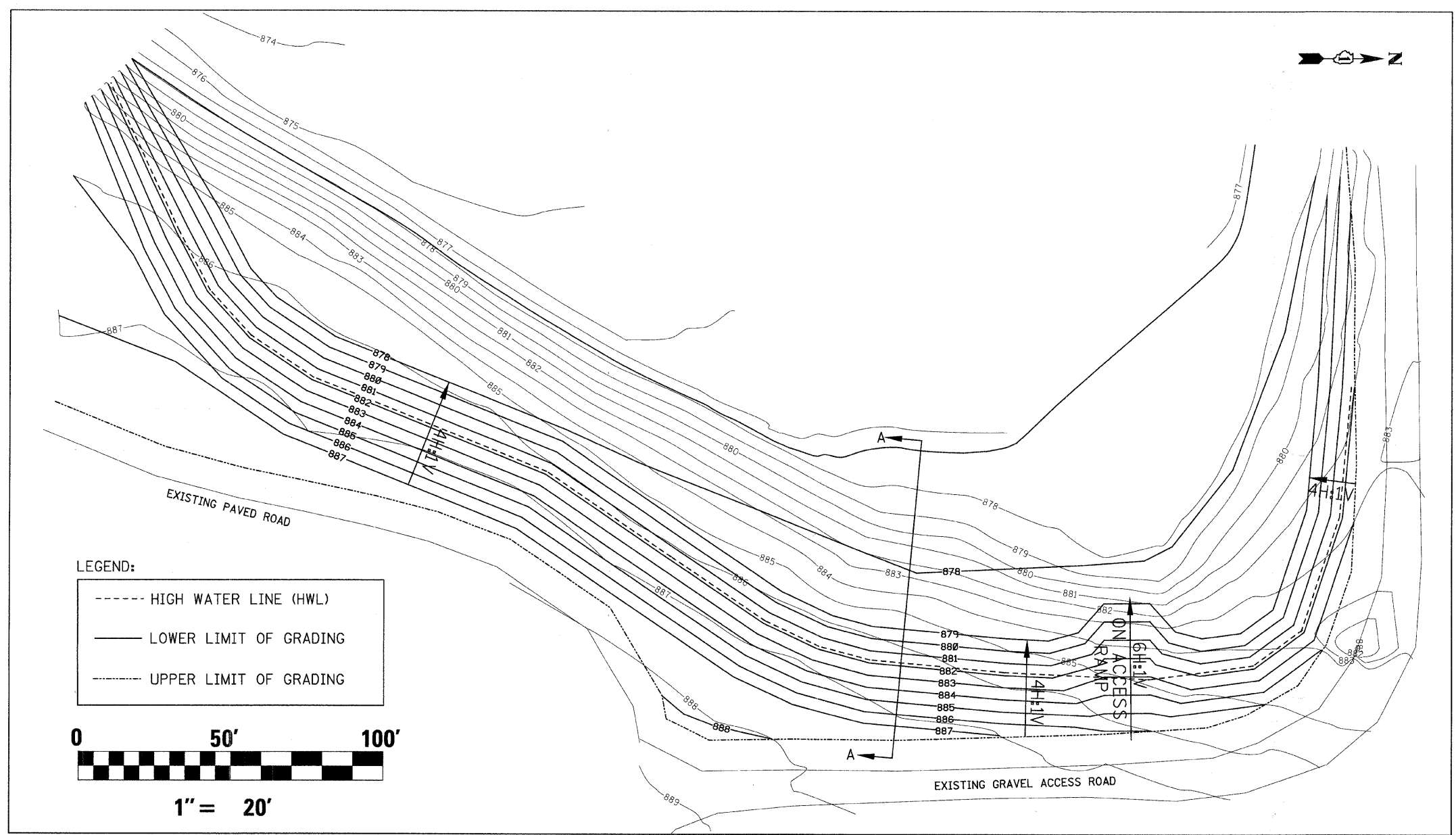
F.A. RTE.	SECTION	COUNTY	TOTAL SHEETS	SHEET NO.
0125	96-00091-00-FP	MCHENRY	73	31
STA. N/A	TO STA. N/A			
FED. ROAD DIST. NO.	ILLINOIS	FED. AID PROJECT		
CONTRACT #63123				



VICINITY MAP

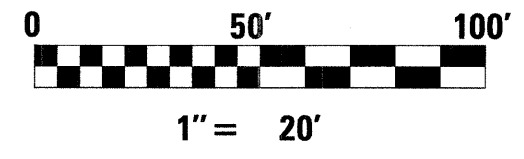


SECTION A-A



LEGEND:

-----	HIGH WATER LINE (HWL)
————	LOWER LIMIT OF GRADING
.....	UPPER LIMIT OF GRADING



GRADING PLAN

- NOTES:
- EXISTING CITY OF CRYSTAL LAKE DETENTION POND TO BE EXPANDED TO PROVIDE AN ADDITIONAL 1.1 AC-FT OF STORAGE BELOW ELEV. 881.87 (HIGH WATER LINE).
  - COORDINATE ACCESS TO SITE WITH THE CRYSTAL LAKE POLICE DEPARTMENT. TO GAIN ACCESS TO THE SITE THE CONTRACTOR MUST SIGN IN AT THE POLICE STATION TO GET A KEY FOR THE FACILITY. THE POLICE DEPARTMENT PHONE NUMBER IS 815-459-2020.
  - RESTORE ALL DISTURBED DETENTION POND AREAS WITH SEEDING CLASS 4A AND EROSION CONTROL BLANKET.

REVISIONS	
NAME	DATE

CITY OF CRYSTAL LAKE  
ERICK STREET (FAU 0125)  
DRAINAGE & UTILITIES  
DETENTION POND GRADING PLAN

SCALE: 1:50  
DATE: DECEMBER 15, 2008

DRAWN BY: JJS  
CHECKED BY: ADJ

**PATRICK**  
ENGINEERING INC.  
LISLE, ILLINOIS