

F.A.I. RTE.	SECTION	COUNTY	TOTAL SHEETS	SHEET NO.
80	(81-1) R-1	ROCK ISLAND	292	1
FED. ROAD DIST. NO.	ILLINOIS	CONTRACT NO. 64933		

**STATE OF ILLINOIS  
DEPARTMENT OF TRANSPORTATION  
DIVISION OF HIGHWAYS**

**PROPOSED  
HIGHWAY PLANS**

**FAI ROUTE 80 (I-80)  
SECTION (81-1)R-1  
PROJECT NHF-080-1(146)000  
ROCK ISLAND COUNTY  
C-92-117-08**

FOR INDEX OF SHEETS, SEE SHEET NO. 2  
FOR STATE STANDARDS, SEE SHEET NO. 2

**TRAFFIC VOLUMES:**

I-80

**CURRENT ADT: 26,000 (2005) 36% TRUCKS**

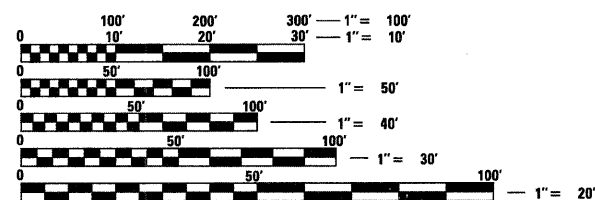
**OMISSIONS**

**STA 16+69.53 TO 51+52**

**IMPROVEMENT BEGINS STA. 1492+00**

**STA EQUATION = IOWA STA 1497+80.00 =  
IL STA 16+69.53**

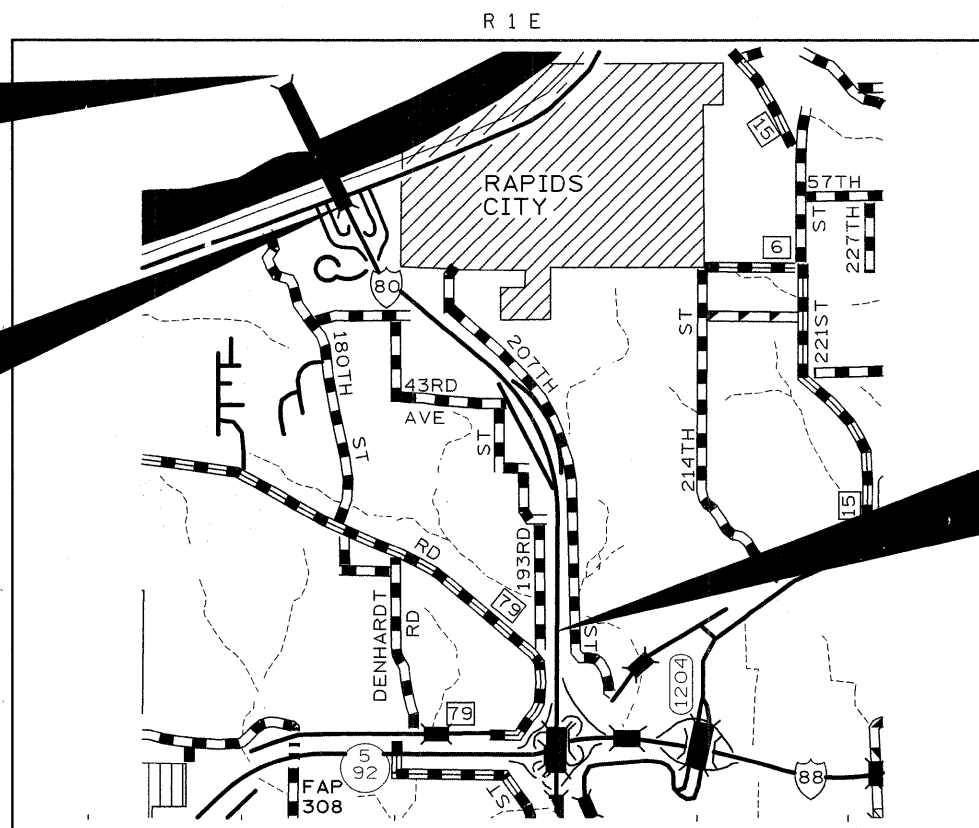
**SECTION BEGINS STA. 51+52**



FULL SIZE PLANS HAVE BEEN PREPARED USING STANDARD ENGINEERING SCALES. REDUCED SIZED PLANS WILL NOT CONFORM TO STANDARD SCALES. IN MAKING MEASUREMENTS ON REDUCED PLANS, THE ABOVE SCALES MAY BE USED.

J.U.L.I.E.  
JOINT UTILITY LOCATION INFORMATION FOR EXCAVATION  
1-800-892-0123  
OR 811

**PROJECT ENGINEER: REBECCA MARRUFFO  
PROJECT MANAGER: ED CONDERMAN (815)-284-5947  
HAMPTON TOWNSHIP, SECTION 10, 11, 14  
CONTRACT NO. 64933**



**NET LENGTH OF IMPROVEMENT = 12,623 FEET = 2.39 MILES  
GROSS LENGTH OF IMPROVEMENT = 16,685 FEET = 3.16 MILES**



**SECTION ENDS STA. 177+75  
IMPROVEMENT ENDS STA. 187+00**

STATE OF ILLINOIS  
DEPARTMENT OF TRANSPORTATION  
DIVISION OF HIGHWAYS

SUBMITTED December 11, 2008  
George F. Ryan  
DEPUTY DIRECTOR OF HIGHWAYS, REGION ENGINEER

January 30, 2009  
Charles J. Ingersoll  
ENGINEER OF DESIGN AND ENVIRONMENT

January 30, 2009  
Christine M. Reed  
DIRECTOR OF HIGHWAYS, CHIEF ENGINEER

**PRINTED BY THE AUTHORITY  
OF THE STATE OF ILLINOIS**