

Chain I80 contains:
 1 CUR 200 CUR 210 CUR 220 CUR 230 CUR 240 CUR 1250 31

Beginning chain I80 description

Point 1 N 1,791,139.6465 E 2,241,631.9500 Sta 16+69.5294

Course from 1 to PC 200 155° 22' 53.3430" Dist 4,558.4706'

Curve Data

Curve 200
 P.I. Station 80+65.8149 N 1,785,324.7735 E 2,244,296.4801
 Delta = 35° 33' 54.2342" (LT)
 Degree = 0° 59' 59.6565"
 Tangent = 1,837.8150'
 Length = 3,556.8458'
 Radius = 5,730.1246'
 External = 287.5071'
 Long Chord = 3,500.0177'
 Mid. Ord. = 273.7708'
 P.C. Station 62+28.0000 N 1,786,995.5339 E 2,243,530.8931
 P.T. Station 97+84.8458 N 1,784,410.9704 E 2,245,891.0106
 C.C. N 1,789,382.5583 E 2,248,740.1582

Course from PT 200 to PC 210 119° 48' 59.1088" Dist 394.5479'

Curve Data

Curve 210
 P.I. Station 130+30.9908 N 1,782,796.9137 E 2,248,707.4407
 Delta = 60° 16' 18.8458" (RT)
 Degree = 1° 09' 59.0681"
 Tangent = 2,851.5971'
 Length = 5,167.3096'
 Radius = 4,912.1568'
 External = 767.7103'
 Long Chord = 4,932.3309'
 Mid. Ord. = 663.9439'
 P.C. Station 101+79.3937 N 1,784,214.7922 E 2,246,233.3295
 P.T. Station 153+46.7033 N 1,779,945.3200 E 2,248,703.0450
 C.C. N 1,779,952.8920 E 2,243,790.8940

Course from PT 210 to PC 220 180° 05' 17.9546" Dist 14,136.3378'

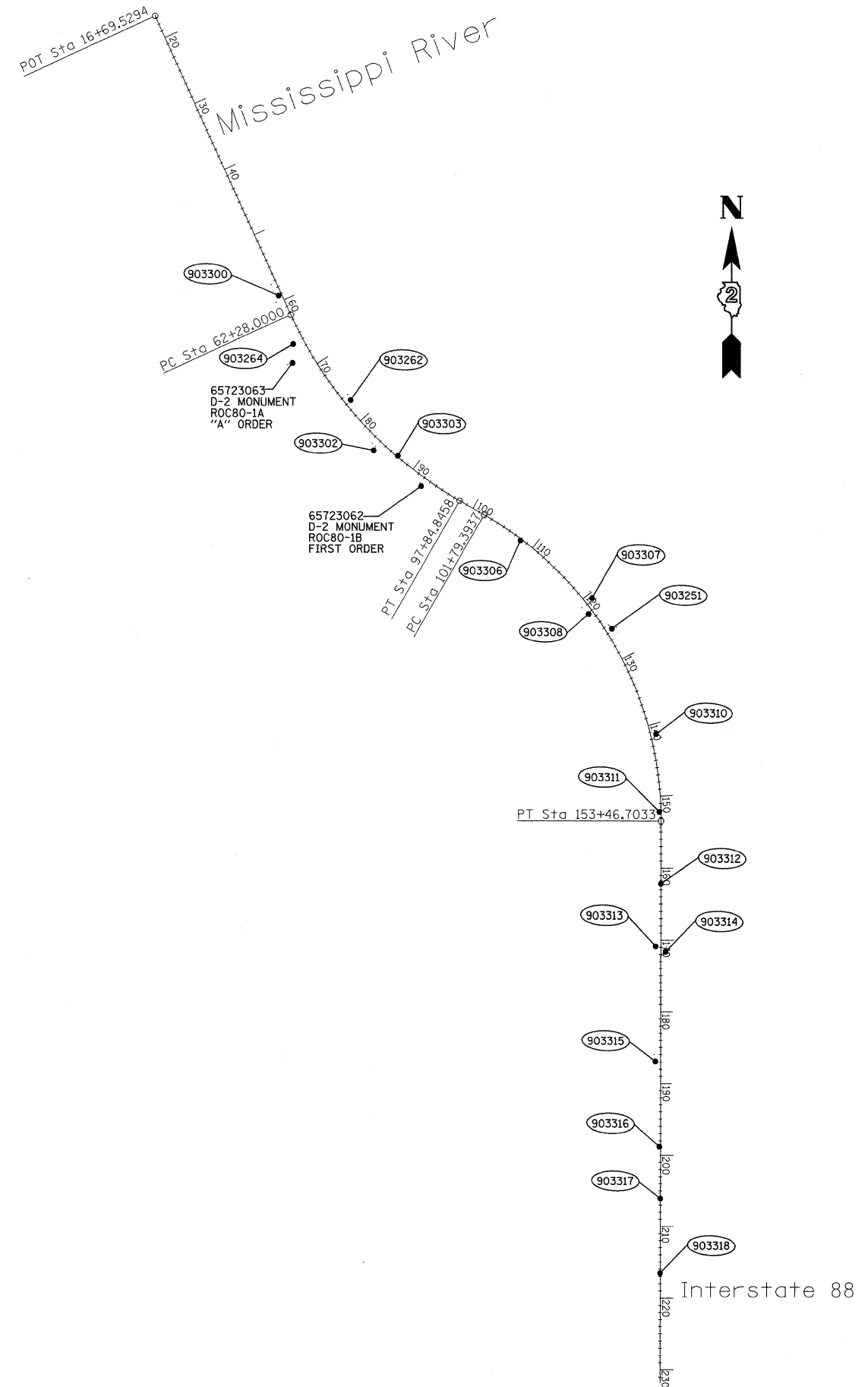
Curve Data

Curve 220
 P.I. Station 303+88.8302 N 1,764,903.2110 E 2,248,679.8577
 Delta = 17° 57' 30.8352" (LT)
 Degree = 0° 59' 58.2644"
 Tangent = 905.7891'
 Length = 1,796.7227'
 Radius = 5,732.3415'
 External = 71.1224'
 Long Chord = 1,789.3770'
 Mid. Ord. = 70.2508'
 P.C. Station 294+83.0411 N 1,765,808.9990 E 2,248,681.2540
 P.T. Station 312+79.7638 N 1,764,041.1227 E 2,248,957.8103
 C.C. N 1,765,800.1627 E 2,254,413.5887

Course from PT 220 to PC 230 162° 07' 47.1194" Dist 726.7187'

CURVE POINT NUMBERS

CHAIN	CURVE	PI	CC	PC	PT
I80	200	200	201	202	203
I80	210	210	211	212	213
I80	220	220	221	222	223



FILE NAME =		USER NAME = grantpm		DESIGNED -	REVISED -	STATE OF ILLINOIS DEPARTMENT OF TRANSPORTATION	EXISTING HORIZONTAL & VERTICAL CONTROL			F.A.I. RTE.	SECTION	COUNTY	TOTAL SHEETS	SHEET NO.
ct:\pw_work\p14dot5\grantpm\dms34287\d0803hvc.dgn		DRAWN -	REVISED -	80	(81-1)R-1					ROCK ISLAND	292	56		
PLOT SCALE = 500.0000' / IN.		CHECKED -	REVISED -	CONTRACT NO. 64933										
PLOT DATE = Mon Dec 15 08:59:35 2008		DATE -	REVISED -	FED. ROAD DIST. NO. ILLINOIS FED. AID PROJECT										
SCALE:		SHEET NO.	OF SHEETS	STA.	TO STA.									