

Chain 20 contains:  
SS111213 CUR 220 CUR 230 SS049202

Beginning chain 20 description

Point SS111213 N 2,069,891.4501 E 2,399,216.8048 Sta 378+50.2889

Course from SS111213 to PC 220 138° 23' 07.2543" Dist 5,172.2066'

Curve Data

Curve 220

P.I. Station 436+53.3483 N 2,065,552.9188 E 2,403,070.7177  
 Delta = 20° 47' 47.0244" (LT)  
 Degree = 1° 39' 59.8097"  
 Tangent = 630.8528'  
 Length = 1,247.8233'  
 Radius = 3,437.8558'  
 External = 57.4021'  
 Long Chord = 1,240.9849'  
 Mid. Ord. = 56.4594'  
 P.C. Station 430+22.4955 N 2,066,024.5622 E 2,402,651.7573  
 P.T. Station 442+70.3188 N 2,065,260.7549 E 2,403,629.8380  
 C.C. N 2,068,307.7021 E 2,405,221.9956

Course from PT 220 to PC 230 117° 35' 20.2298" Dist 396.8807'

Curve Data

Curve 230

P.I. Station 452+31.5625 N 2,064,815.5788 E 2,404,481.7815  
 Delta = 22° 28' 50.3482" (RT)  
 Degree = 2° 01' 03.4845"  
 Tangent = 564.3630'  
 Length = 1,114.2083'  
 Radius = 2,839.7501'  
 External = 55.5368'  
 Long Chord = 1,107.0750'  
 Mid. Ord. = 54.4715'  
 P.C. Station 446+67.1995 N 2,065,076.9495 E 2,403,981.5906  
 P.T. Station 457+81.4078 N 2,064,382.8113 E 2,404,844.0216  
 C.C. N 2,062,560.0992 E 2,402,666.4309

Course from PT 230 to SS049202 140° 04' 10.5780" Dist 432.7154'

Point SS049202 N 2,064,050.9944 E 2,405,121.7627 Sta 462+14.1232

Ending chain 20 description

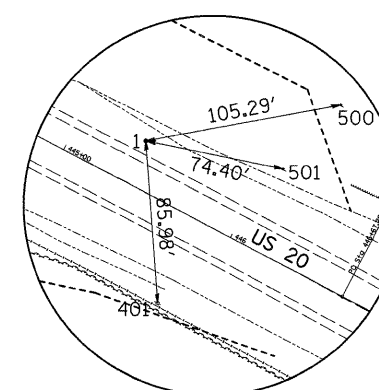
HORIZONTAL CONTROL POINTS							
POINT	NORTH	EAST	ELEVATION	CHAIN	STATION	OFFSET	DESCRIPTION
1	2065159.0460	2403877.1670	913.1660	20	445+36.6286	24.4003' LT	GPS CONTROL POINT, PIN
2	2065386.1440	2403450.3530	911.9790	20	440+51.6833	21.1002' LT	GPS CONTROL POINT, PIN

SURVEY WORK POINTS							
POINT	NORTH	EAST	ELEVATION	CHAIN	STATION	OFFSET	DESCRIPTION
100	2064835.6740	2403948.4010	923.7020	20	447+56.7232	227.9139' RT	TOPO SURVEY POINT, NAIL
101	2065241.1000	2403554.8590	917.2910	20	442+13.8301	52.6159' RT	TOPO SURVEY POINT, NAIL
102	2065392.4610	2403883.7610	902.6230	20	444+34.3725	234.3282' LT	TOPO SURVEY POINT, NAIL

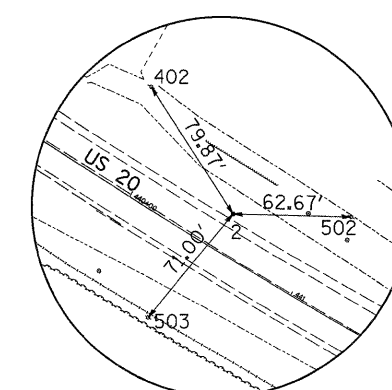
BENCH MARKS							
POINT	NORTH	EAST	ELEVATION	CHAIN	STATION	OFFSET	DESCRIPTION
405	2063784.0550	2405335.5160	917.4750	20	OUT OF CHAIN	-----	HEADWALL, CHISELED SQUARE
401	2065072.5310	2403883.7240	914.3460	20	445+82.5073	49.2406' RT	POWER POLE, POWER POLE
402	2065452.6260	2403407.9770	907.0350	20	439+79.8172	55.2351' LT	TELEGRAPH POLE, TELEGRAPH POLE

REFERENCE TIES				
POINT	CHAIN	STATION	OFFSET	DESCRIPTION
500	20	446+19.4920	89.3587' LT	WARNING SIGN, FACE
501	20	446+08.0911	45.1125' LT	WARNING SIGN, FACE
502	20	441+06.8358	52.0124' LT	TELEGRAPH POLE, FACE
503	20	440+41.6763	49.0902' RT	POWER POLE, FACE

CURVE POINT NUMBERS					
CHAIN	CURVE	PI	CC	PC	PT
20	220	220	221	222	223
20	230	230	231	232	233



HORIZONTAL CONTROL POINT No.1



HORIZONTAL CONTROL POINT No.2