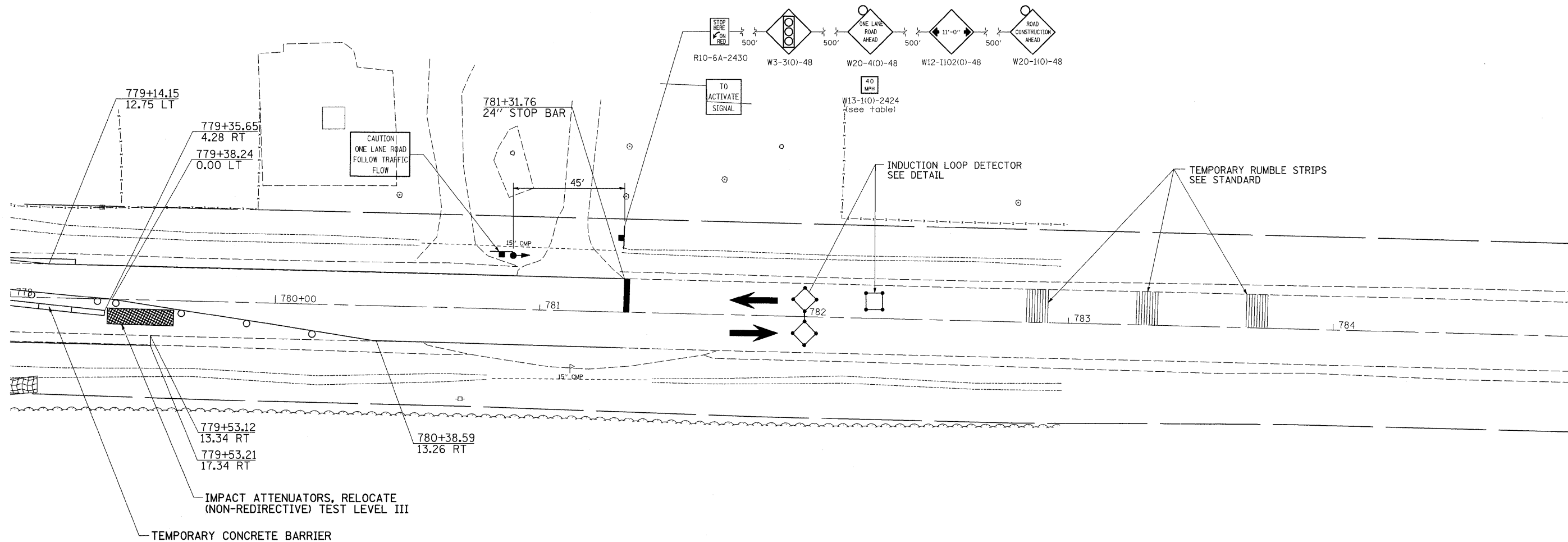


STAGE 2



STAGE 2 NOTES

1. USE STANDARD 701321 FOR CULVERT WORK.
2. INSTALL TRAFFIC SIGNALS ON SIDE ROAD.
3. CONSTRUCT UPSTREAM SECTION OF CULVERT INCLUDING END SECTION, RIP-RAP, AND EARTHWORK.
4. PLACE CLASS C PATCH OVER REMAINING PATCH AREA.
5. PLACE TEMPORARY SHOULDERS TO BE USED DURING STAGE 3.

	= WORK AREA
	= TYPE III BARRICADE WITH FLASHING LIGHTS
	= SIGN
	= BARRICADE, OR DRUM WITH STEADY BURNING LIGHTS
	= INDUCTION LOOP DETECTOR
	= TRAFFIC SIGNAL

FILE NAME =	USER NAME = hensonke	DESIGNED -	REVISED -
ct:\pw_work\FWIDOT\HENSONKE\dms34455\d11006stg.dgn		DRAWN -	REVISED -
		CHECKED -	REVISED -
		DATE -	REVISED -

STATE OF ILLINOIS
DEPARTMENT OF TRANSPORTATION

STAGING PLANS

SCALE: SHEET NO. OF SHEETS STA. TO STA.

F.A.P. RTE.	SECTION	COUNTY	TOTAL SHEETS	SHEET NO.
611	103T-2	HENRY	35	15
FED. ROAD DIST. NO.			ILLINOIS FED. AID PROJECT	
CONTRACT NO. 64C66				