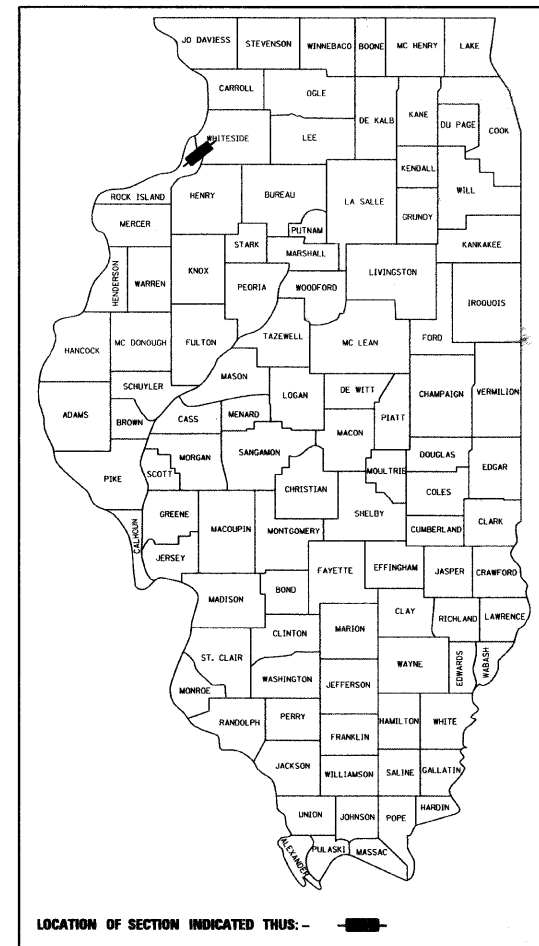


F.A.I. ROUTE NO.	SECTION	COUNTY	TOTAL SHEETS	SHEET NO.
88	-	**	64	1
FED. ROAD DIST. NO.		ILLINOIS	FED. AID PROJECT	
		* BRIDGE DECK REPAIRS 2007-1 ** ROCK ISLAND & WHITESIDE		

CONTRACT NO. 64D24

D-92-064-07



STATE OF ILLINOIS
DEPARTMENT OF TRANSPORTATION
DIVISION OF HIGHWAYS
**PLANS FOR PROPOSED
CONTRACT MAINTENANCE**

ROUTE FAI 88 (I-88)
BRIDGE REHABILITATIONS OVER I-88
SECTION: BRIDGE DECK REPAIRS 2007-1
PROJECT NO. IM-088-1(015)006
ROCK ISLAND AND WHITESIDE COUNTIES
JOB NO. C-92-085-07

FOR INDEX OF SHEETS
SEE SHEET 2
FOR A LISTING OF
HIGHWAY STANDARDS
SEE SHEET 2

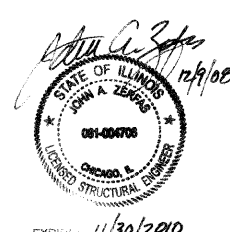
TRAFFIC DATA

I-88 SPEED LIMIT 65 MPH

EXISTING ADT

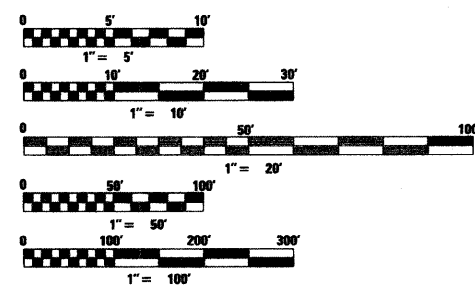
I-88 10,800 (2005)
286TH ST.. 450 (2005)
317TH ST. 375 (2005)
WILMOT RD. 500 (2005)
LYNDON RD 1050 (2005)

PROJECT LOCATED IN ROCK ISLAND
AND WHITESIDE COUNTIES



SQUAD LEADER: FAITH DUNCAN 815-284-5364

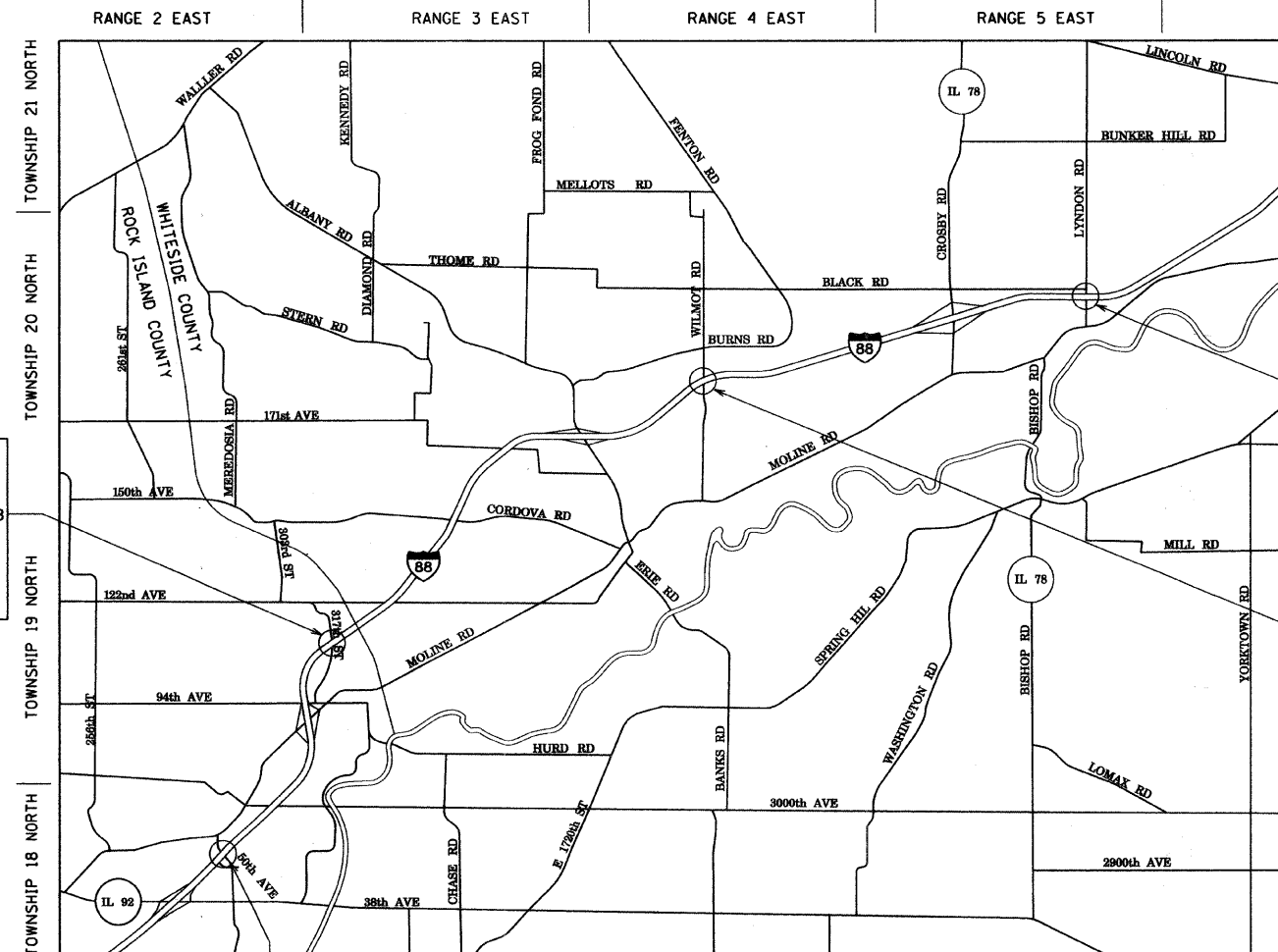
CONSULTANT CONTACT: JOHN ZERFAS, S.E. 773-399-5456
PROJECT ENGINEER: MAHMOUD ETEMADI 815-284-5393



FULL SIZE PLANS HAVE BEEN PREPARED USING STANDARD
ENGINEERING SCALES, REDUCED SIZED PLANS WILL NOT
CONFORM TO STANDARD SCALES, IN MAKING MEASUREMENTS
ON REDUCED PLANS, THE ABOVE SCALES MAY BE USED.

J.U.L.I.E. JOINT UTILITY LOCATION INFORMATION
FOR EXCAVATION 1-800-892-0123

CONTRACT NO. 64D24



PROJECT LOCATION STRUCTURE NO: 081-0132 STA. 633+63.08, I-88 STA. 2130+77.86 CH 49 (317TH ST) SECTION 17 CANOE CREEK TOWNSHIP

PROJECT LOCATION STRUCTURE NO: 081-0126 STA. 371+14.85, I-88 STA. 2008+40.54 CH 25 (286TH ST.) SECTION 12 ZUMA TOWNSHIP.

NOT TO SCALE

PROJECT LOCATION STRUCTURE NO: 098-0066 STA. 1489+04.50, I-88 STA. 3529+69.36 CH 37 (LYNDON RD) SECTION 15-16 LYNDON TOWNSHIP

PROJECT LOCATION STRUCTURE NO: 098-0058 STA. 1009+07.00, I-88 STA. 3014+40.25 T.R.J.O. (WILMOT RD) SECTION 20-21 FENTON TOWNSHIP

STATE OF ILLINOIS
DEPARTMENT OF TRANSPORTATION
DIVISION OF HIGHWAYS

SUBMITTED December 9 20 08
John F. Ryan
DEPUTY DIRECTOR OF HIGHWAYS, DISTRICT 2 ENGINEER

January 30, 20 09
Charles G. Ingersoll
ENGINEER OF DESIGN AND ENVIRONMENT

January 30, 20 09
Christine M. Reed
DIRECTOR, DIVISION OF HIGHWAYS

DISTRICT 2, DIXON, IL
PRINTED BY THE AUTHORITY OF
THE STATE OF ILLINOIS

GRAEF, ANHALT, SCHLOEMER & ASSOCIATES, INC.
ENGINEERS & SCIENTISTS
8501 W. Higgins Road, Suite 280
Chicago, Illinois 60631
(773) 399-0112