

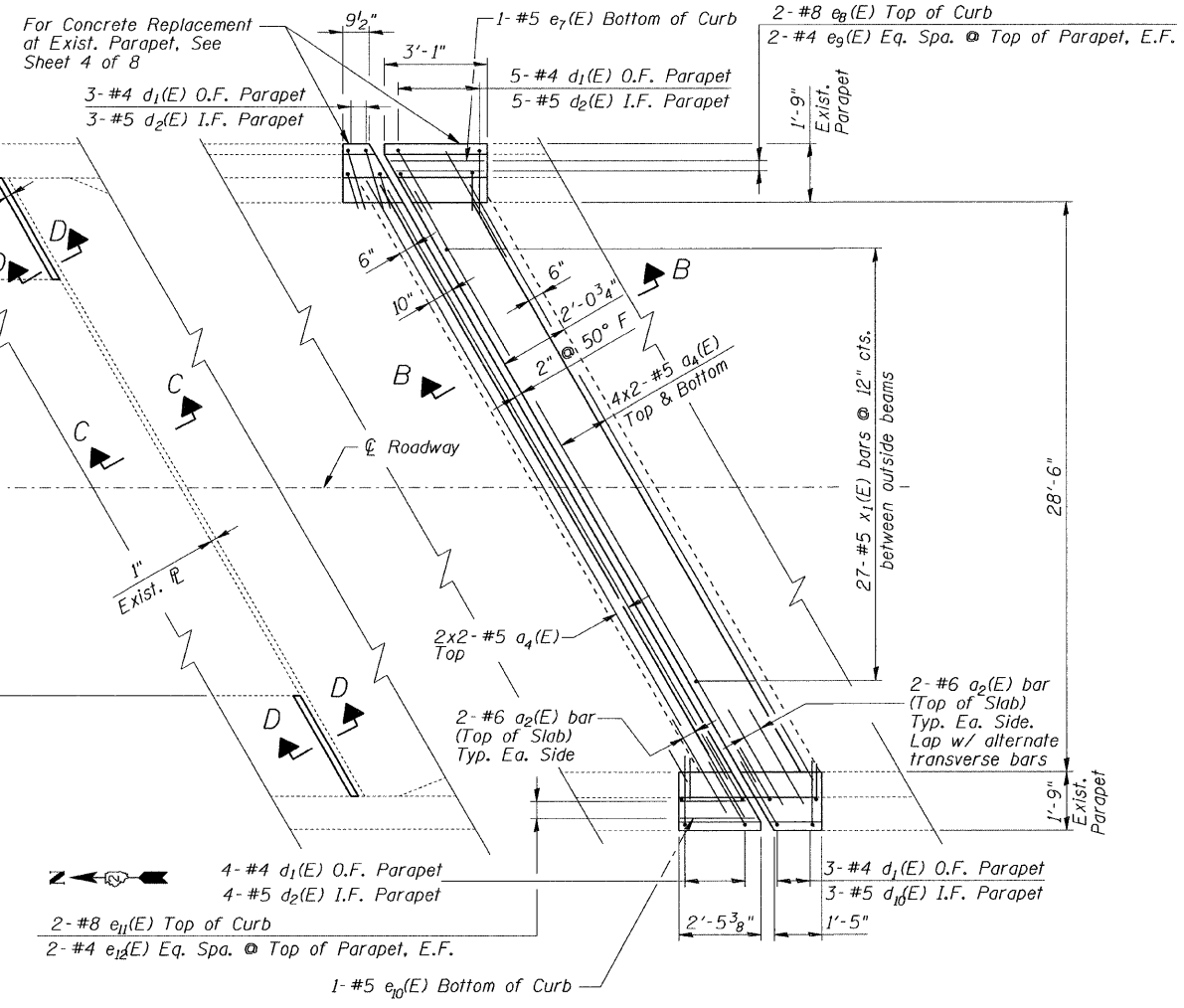
CONCRETE REMOVAL @ EXIST. NORTH ABUTMENT EXP. JOINT PLAN
EXIST. SOUTH ABUTMENT SIM. OPP. HAND PLAN

NOTES:

- * Exist. reinforcement bars extending into the removal areas shall be cleaned, straightened and incorporated into the new construction. Any reinforcement bars that are damaged during concrete removal shall be replaced with approved bar splicer or anchorage system. Cost included with Concrete Removal.
- For Sections C-C & D-D see Sheet 4 of 8.
- Bars indicated thus 4x2-#5 etc. indicates 4 lines of bars with 2 lengths per line.
- Lap #5 bars 2'-2" min.

LEGEND

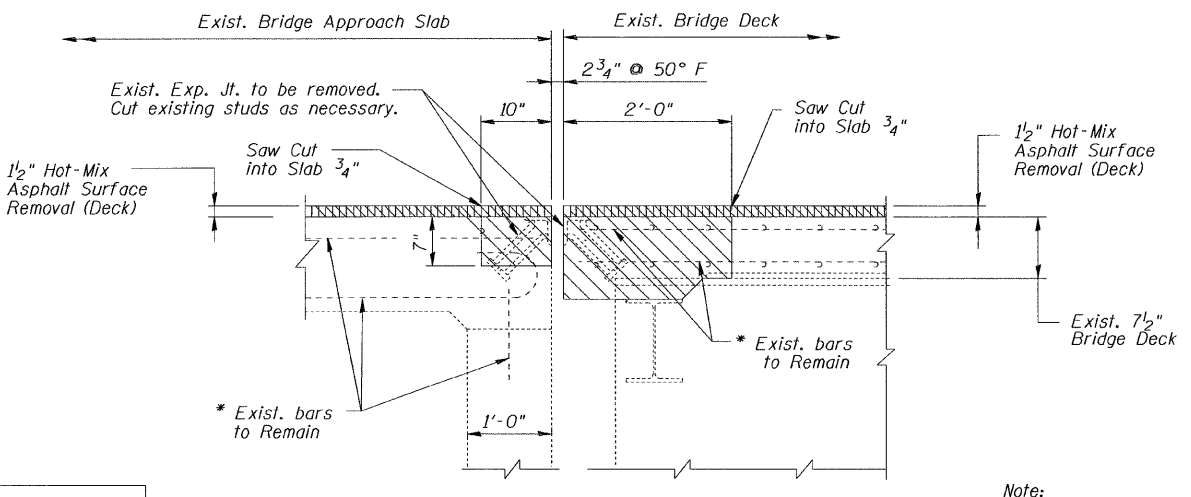
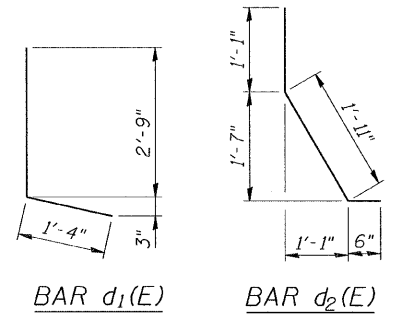
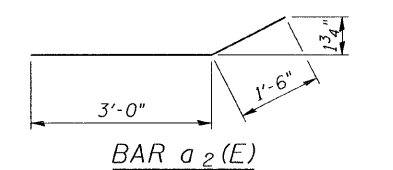
- Concrete Removal



CONCRETE REPLACEMENT @ EXIST. NORTH ABUTMENT EXP. JOINT PLAN
EXIST. SOUTH ABUTMENT SIM. OPP. HAND PLAN

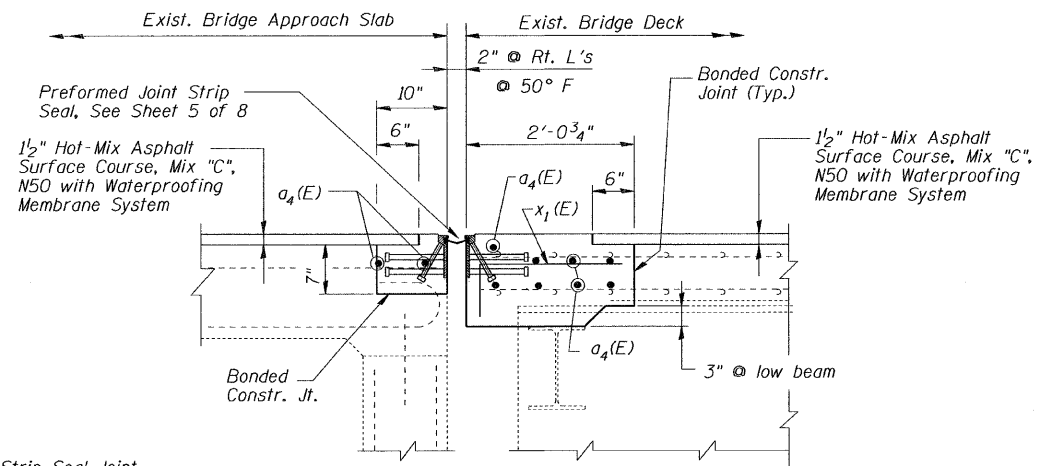
BILL OF MATERIAL

Bar	No.	Size	Length	Shape
a ₂ (E)	16	#6	4'-6"	—
a ₄ (E)	40	#5	18'-2"	—
a ₁₀ (E)	16	#5	2'-0"	—
d ₁ (E)	24	#4	4'-1"	└
d ₂ (E)	24	#5	3'-6"	└
e ₇ (E)	2	#5	2'-6"	—
e ₈ (E)	4	#8	2'-6"	—
e ₉ (E)	8	#4	2'-6"	—
e ₁₀ (E)	2	#5	1'-10"	—
e ₁₁ (E)	4	#8	1'-10"	—
e ₁₂ (E)	8	#4	1'-10"	—
x ₁ (E)	54	#5	2'-6"	└
Concrete Removal		Cu. Yd.	8.2	
Concrete Superstructure		Cu. Yd.	9.0	
Protective Coat		Sq. Yd.	20	
Reinforcement Bars, Epoxy Coated		Pound	1,280	
Silicone Joint Sealer, 1"		Foot	18	



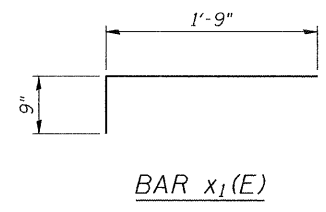
SECTION A-A

DESIGNED	S.D.H.
CHECKED	E.E.J.
DRAWN	M.S.M.
CHECKED	S.D.H.



SECTION B-B

Note:
Dimensions are based on a Rolled Rail Strip Seal.
If the Contractor elects to use the Welded Rail Strip Seal Joint, deck dimensions may require adjustments to satisfy the details on Base Sheet E.J-SSJ as shown on Sheet 5 of 8.



JOINT DETAILS
C.H. 17 (WILMOT ROAD) OVER I-88
F.A.I. ROUTE 88
SECTION: BRIDGE DECK REPAIRS 2007-1
WHITESIDE COUNTY
STATION 3014+40.25
S.N. 098-0058
DATE: 12-09-08
GRAEF, ANHALT, SCHLOEMER & ASSOCIATES INC
CHICAGO ILLINOIS

n:\jobs\2008\plot\2001-4014-09\098-0058\Wilmot Rd.\00\098-0058-S35.dgn 12/8/2008