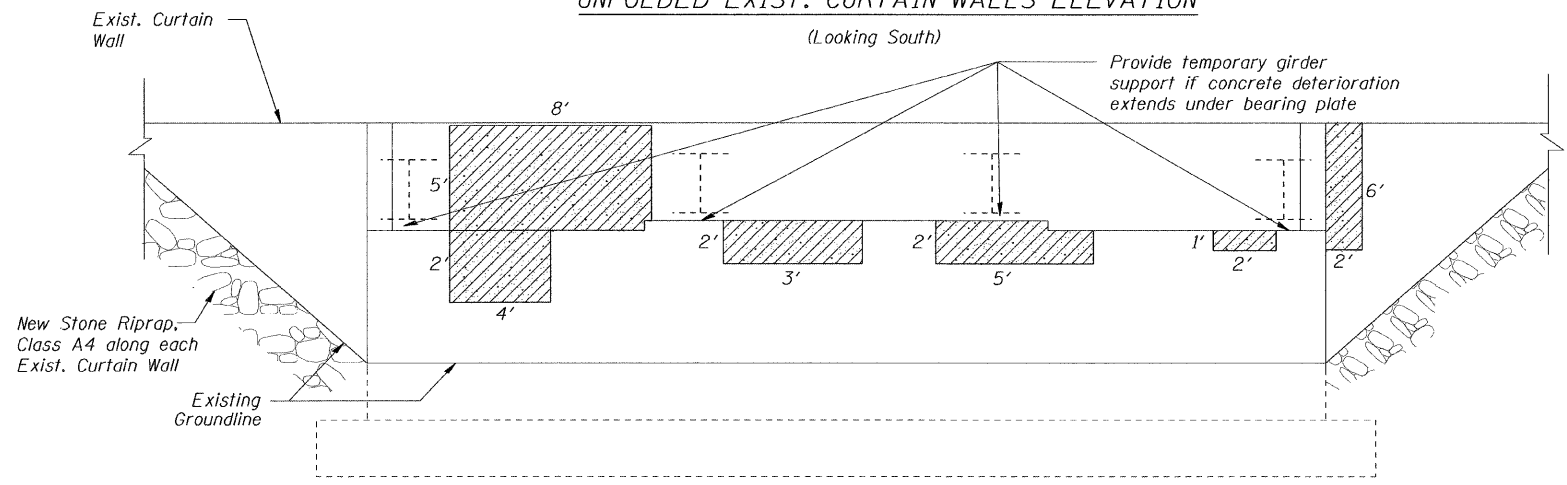
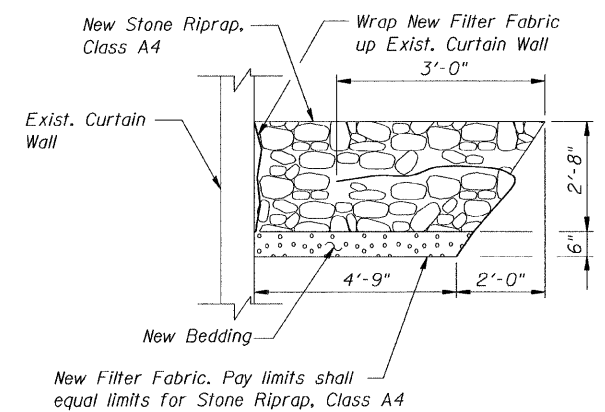


**EXIST. SOUTH ABUTMENT & UNFOLDED EXIST. CURTAIN WALLS ELEVATION**  
(Looking South)



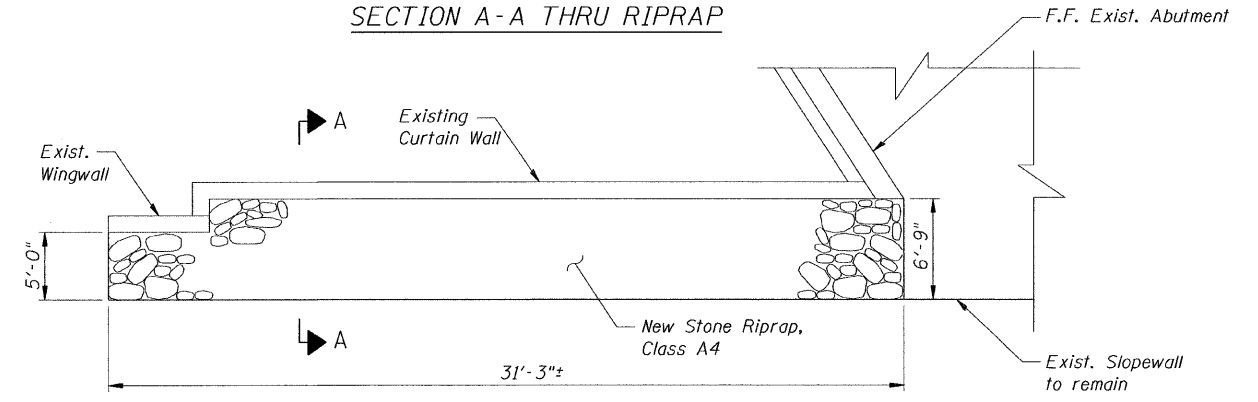
**EXIST. NORTH ABUTMENT & UNFOLDED EXIST. CURTAIN WALLS ELEVATION**  
(Looking North)



**SECTION A-A THRU RIPRAP**

**LEGEND**

- Structural Repair of Concrete (Depth Equal to or Less than 5")
- Concrete Removal

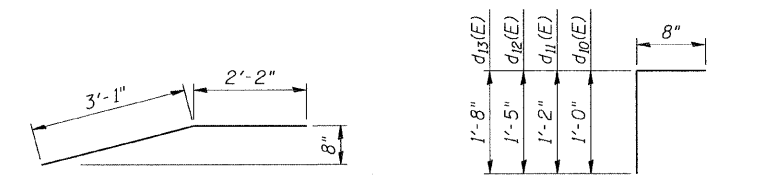


**RIPRAP PLAN AT EXIST. ABUTMENTS**  
(Exist. North Abutment, west side shown. Other locations similar)

**BILL OF MATERIAL**

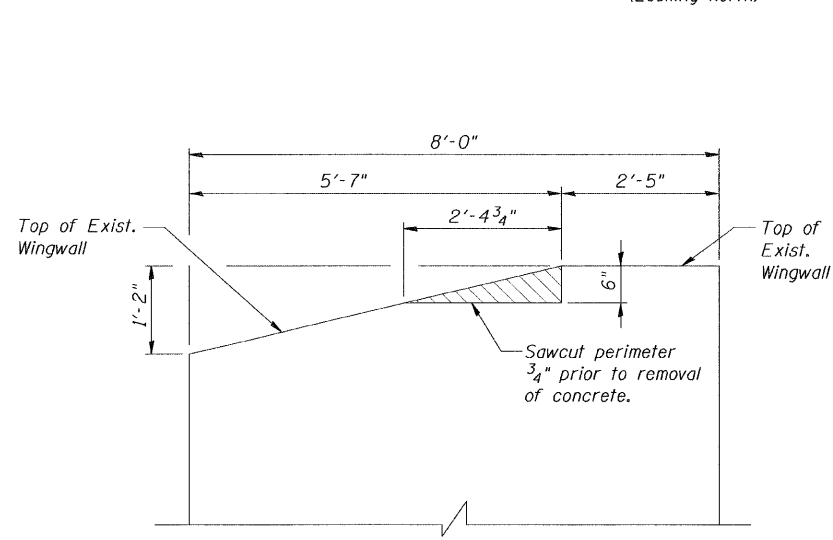
Bar	No.	Size	Length	Shape
d <sub>10</sub> (E)	12	#5	1'-8"	□
d <sub>11</sub> (E)	4	#5	1'-10"	□
d <sub>12</sub> (E)	4	#5	2'-1"	□
d <sub>13</sub> (E)	4	#5	2'-4"	□
e <sub>12</sub> (E)	8	#5	5'-3"	—
e <sub>13</sub> (E)	8	#5	5'-3"	—
Stone Riprap, Class A4		Sq. Yd.	98	
Filter Fabric		Sq. Yd.	98	
Concrete Removal		Cu. Yd.	0.1	
Concrete Superstructure		Cu. Yd.	0.6	
Protective Coat		Sq. Yd.	4	
Reinforcement Bars, Epoxy Coated		Pound	140	
Structural Repair of Concrete (Depth Equal to or Less than 5")		Sq. Ft.	198	

Note: Quantity for Structural Repair of Concrete has been increased to include additional repair areas not apparent at the time of the inspection. The actual repair areas will be determined by the Resident Engineer. The Contractor will be paid for the quantity furnished.

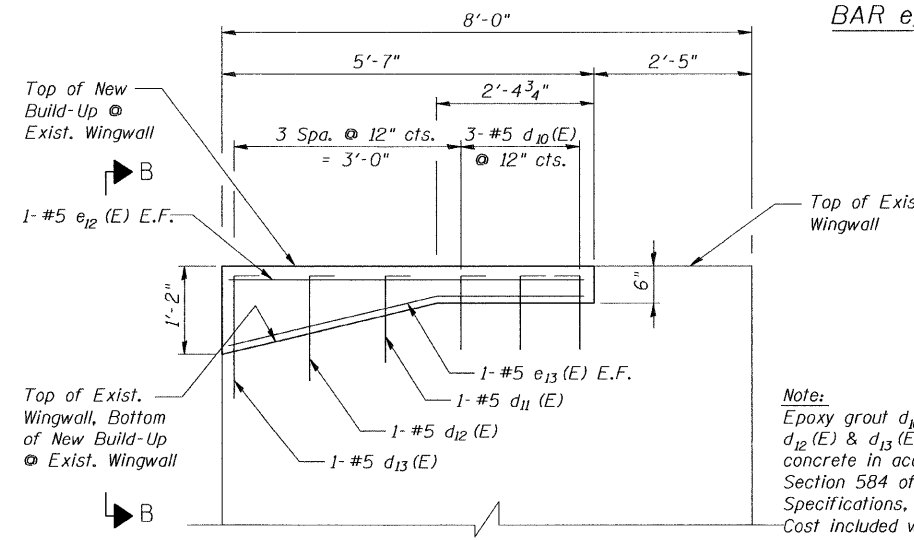


**BAR e<sub>13</sub>(E)**

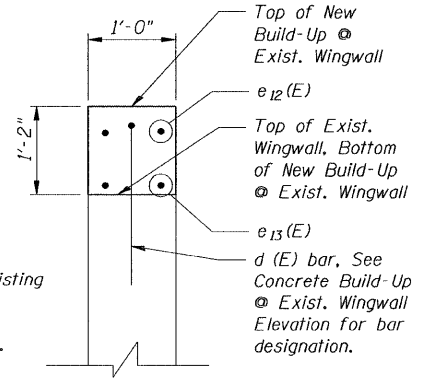
**BARS d<sub>10</sub>(E), d<sub>11</sub>(E), d<sub>12</sub>(E), d<sub>13</sub>(E)**



**CONCRETE REMOVAL @ EXIST. WINGWALL ELEVATION**  
(O.F. of Northwest Exist. Wingwall shown, looking east. Other locations similar)



**CONCRETE BUILD-UP @ EXIST. WINGWALL ELEVATION**  
(O.F. of Northwest Exist. Wingwall shown, looking east. Other locations similar)



**VIEW B-B**

Note: Epoxy grout d<sub>10</sub>(E), d<sub>11</sub>(E), d<sub>12</sub>(E) & d<sub>13</sub>(E) bars into existing concrete in accordance with Section 584 of the Standard Specifications, min. 8" embed. Cost included with Concrete Superstructure.

DESIGNED	S.D.H.
CHECKED	E.E.J.
DRAWN	M.S.M.
CHECKED	S.D.H.

**SUBSTRUCTURE REPAIR & RIPRAP DETAILS**  
C.H. 17 (WILMOT ROAD) OVER I-88  
F.A.I. ROUTE 88  
SECTION: BRIDGE DECK REPAIRS 2007-1  
WHITESIDE COUNTY  
STATION 3014+40.25  
S.N. 098-0058  
DATE: 12-09-08  
GRAEF, ANHALT, SCHLOEMER & ASSOCIATES INC  
CHICAGO ILLINOIS

n:\jobs\2008\plot\2001-4014.09\098-0058\Wilmot Rd.\00\098-0058-S39.dgn  
12/8/2008