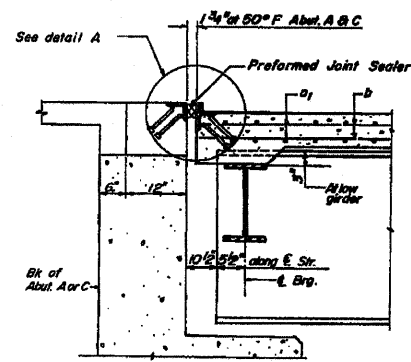
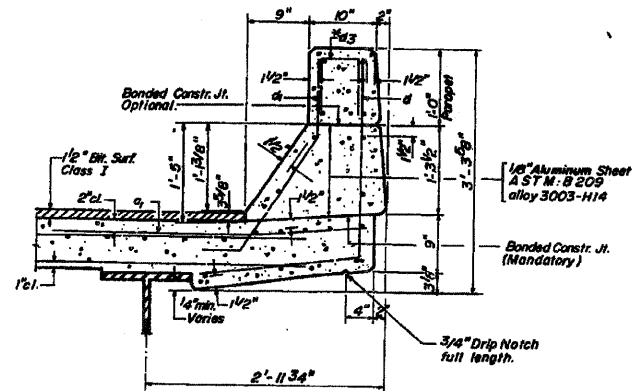


FOR INFORMATION ONLY

ROUTE NO.	SECTION	COUNTY	TOTAL SHEETS	SHEET NO.	SHEETS
196	1-2	WHITESIDE	230	97	16
F.A. 403					
FED. ROAD DIST. NO. 7					

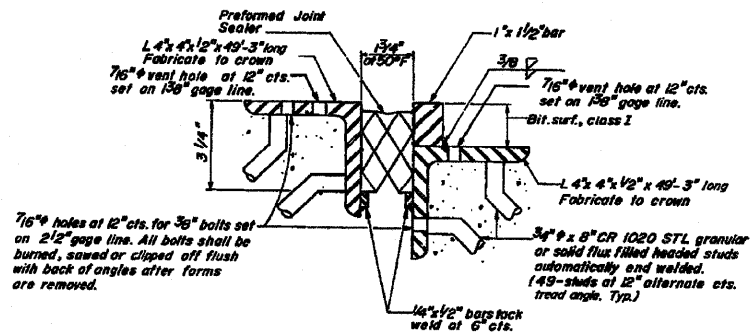


SECTION A-A



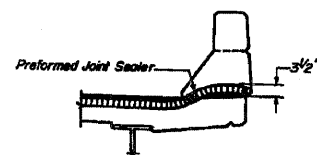
CURB SECTION

Cost of Aluminum Sheets and Drains shall be incidental to Class X Concrete.

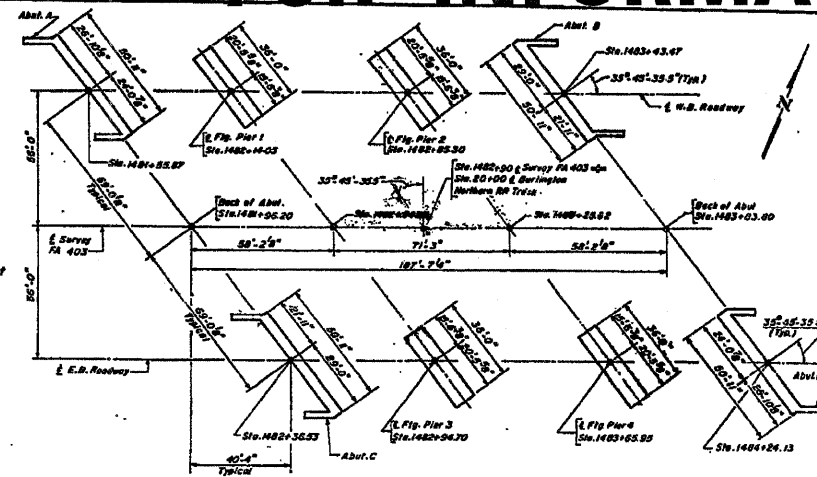


DETAIL A
Scale: 3/8"=1"

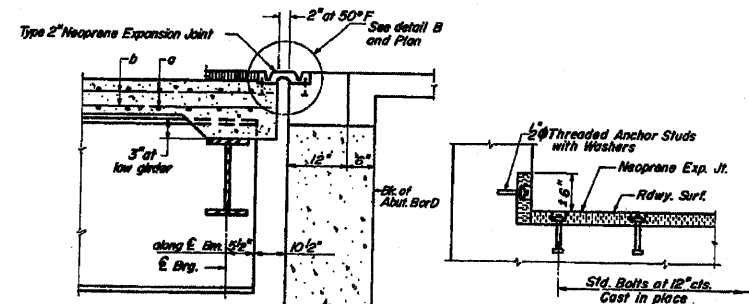
PREFORMED JOINT SEALER (2 1/2") AT ABUT. A & C



TYPICAL END OF SEALER TREATMENT

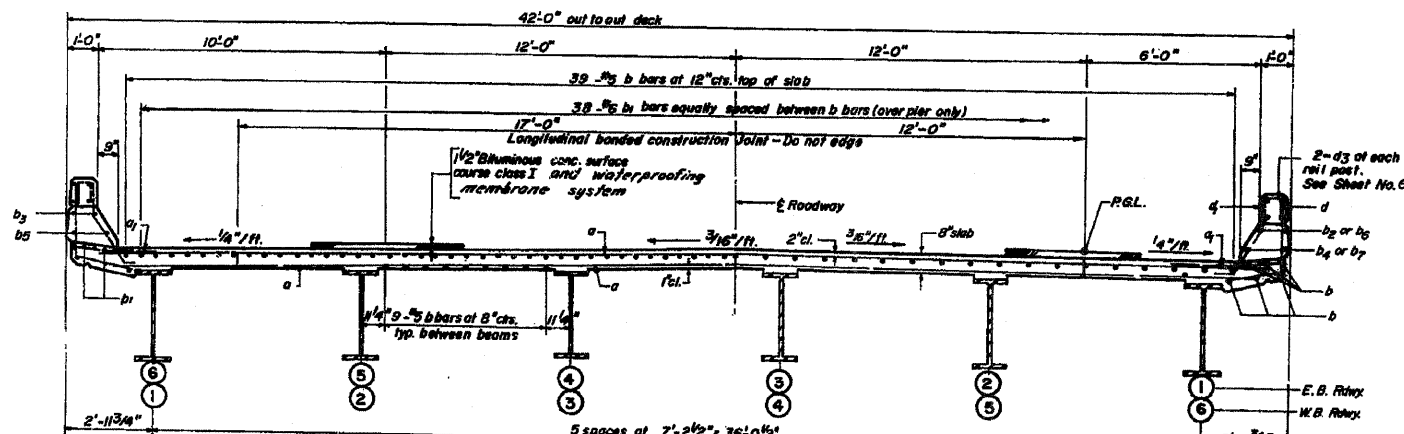


FOOTING LAYOUT



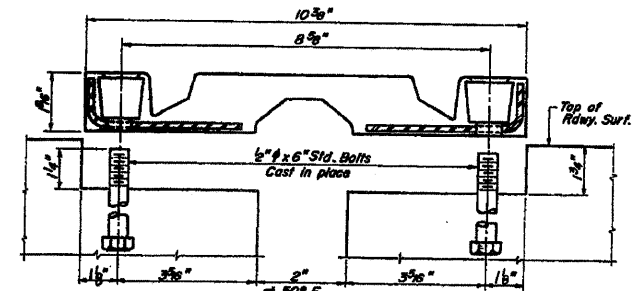
SECTION B-B

ABUTMENT INSTALLATION

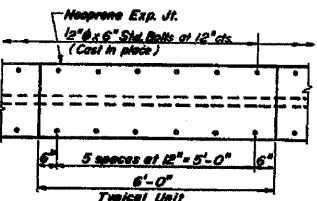


CROSS SECTION

W.B. BRIDGE LOOKING EAST
E.B. BRIDGE LOOKING WEST



DETAIL B



PLAN

BILL OF MATERIAL				
BAR NO.	SIZE	LENGTH	SHAPE	
a	800	#5	40'-0"	
a1	400	#6	4'-0"	
b	672	#5	27'-3"	
b1	84	#6	21'-9"	
b2	16	#8	24'-6"	
b3	16	#8	8'-6"	
b4	16	#5	24'-2"	
b5	16	#5	8'-6"	
b6	8	#8	27'-9"	
b7	8	#5	27'-4"	
d	368	#4	4'-9"	
d1	364	#5	3'-7"	
Reinforcement Bars				Lbs. 62,930
Class X Concrete				Cu. Yds. 227.4
Structural Steel				Lbs. 196,690
Protective Coat				Sq. Yds. 133
Bit. Conc. Surface Course Class				Ton 66
Waterproofing Mem. Sys.				Sq. Yds. 7.85
2 1/2" Preformed Joint Sealer				Ln. Ft. 52
2" Neoprene Joint				Lbs. Ft. 50

Note: Bill of Material - for one Bridge only. Material for two Bridges required.

**Weight of bearing assemblies with lead plates and anchor bolts is included as Structural Steel.

**Parapet Reinforcement and Class X Concrete are billed on sheet No. 6

Note: Work this sheet with sheet No. 4

DESIGNED	B. T. M.
CHECKED	A. A.
DRAWN	A. S.
CHECKED	B. T. M.

DECK DETAILS
FA 403 SECTION 195-1VB
FA 403 OVER BURLINGTON NORTHERN R. R.
WHITESIDE COUNTY
STATION 1482+90.00
098-00612