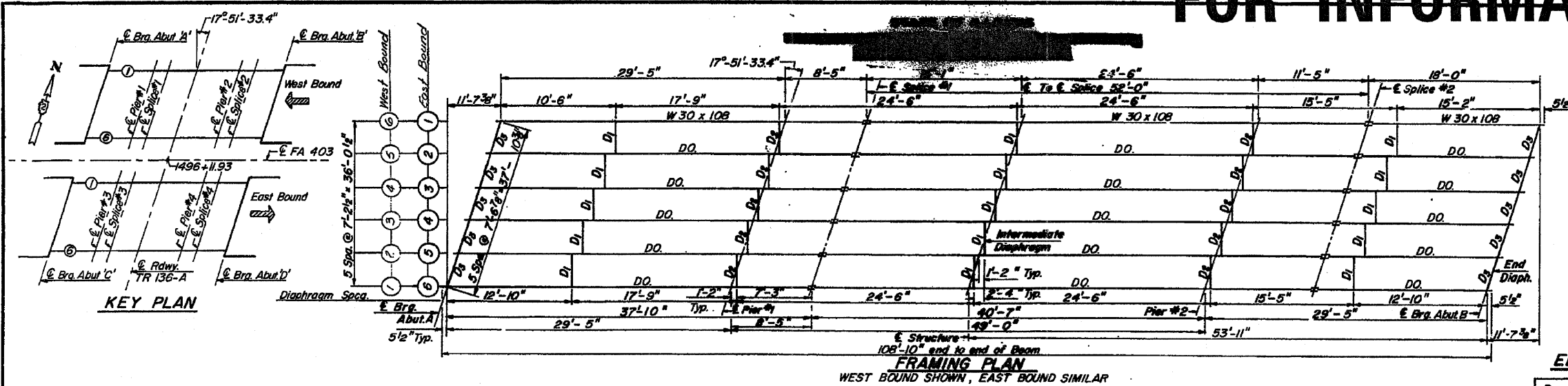


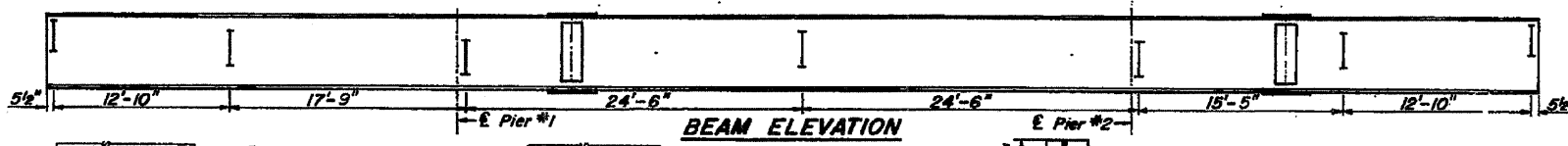
FOR INFORMATION ONLY

ROUTE NO.	SECTION	COUNTY	TOTAL SHEETS	SHEET NO.
FA 403	1-2	WHITESIDE	230	115
SHEET NO. 7				
17 SHEETS				



SHIMS

Abut. C	1/2"
Abut. D	3/8"



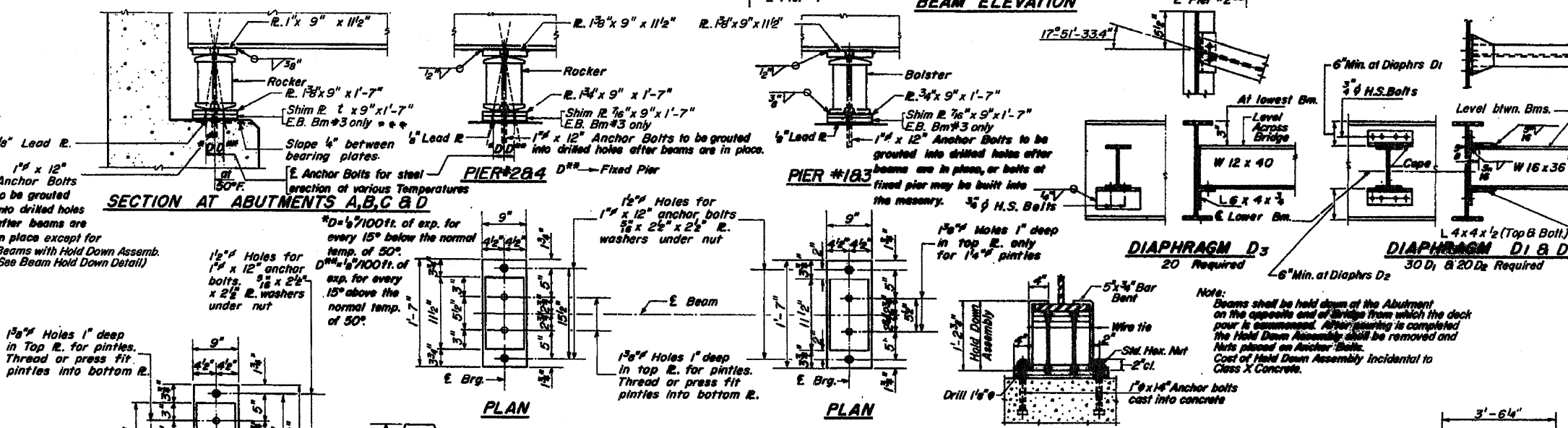
ELEV. TOP OF WEST BOUND BEAMS*

Beam No.	E. Brg. Abut. A	E. Pier #1	E. Splice #1	E. Pier #2	E. Splice #2	E. Brg. Abut. B
6	610.419	610.004	609.902	609.408	609.269	609.107
5	610.525	610.110	610.007	609.513	609.374	609.212
4	610.609	610.194	610.091	609.597	609.458	609.296
3	610.518	610.103	610.001	609.507	609.368	609.206
2	610.373	609.958	609.856	609.362	609.223	609.060
1	610.195	609.780	609.677	609.183	609.044	608.882

ELEV. TOP OF EAST BOUND BEAMS*

Beam No.	E. Brg. Abut. C	E. Pier #3	E. Splice #3	E. Pier #4	E. Splice #4	E. Brg. Abut. D
1	610.732	610.317	610.215	609.721	609.582	609.425
2	610.894	610.479	610.377	609.883	609.744	609.581
3	611.036	610.620	610.518	610.024	609.885	609.723
4	611.001	610.586	610.484	609.990	609.851	609.688
5	610.912	610.497	610.395	609.901	609.762	609.600
6	610.791	610.375	610.273	609.779	609.640	609.478

* For Fabrication Only.

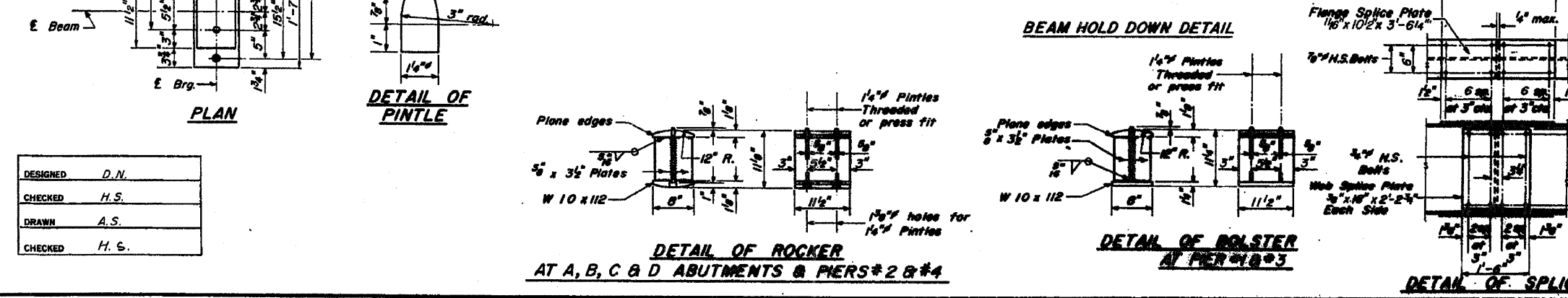


INTERIOR BEAM MOMENT TABLE

	0.4 Sp. 1 or 3	Pier 1 or 2	0.5 Sp. 2
I (in ⁴)	4461	4461	4461
DL (K)	1255	1255	1255
MDL (K)	42.9	-217.4	159.1
MLL (K)	196.1	-240.21	290.8
M Total (K)	239.0	-457.6	449.9
Fs (Ksi)	9.59	18.37	18.05

INTERIOR GIRDER REACTION TABLE

	Abut.	Pier
RDL (K)	11.0	56.5
RLLi (K)	45.9	62.7
R Total (K)	56.9	119.2



DESIGNED	D.N.
CHECKED	H.S.
DRAWN	A.S.
CHECKED	H.S.

* FA1 Route 88 & FAP Route 309 (I-88 & US 30)
 ** D2 Bridge Painting 2009-2

SUPERSTRUCTURE STEEL
 FA 403 SECTION 195-1HB-5
 FA 403 OVER TR 136-A
 WHITESIDE COUNTY
 STATION 1496+11.93
 096-0663.4