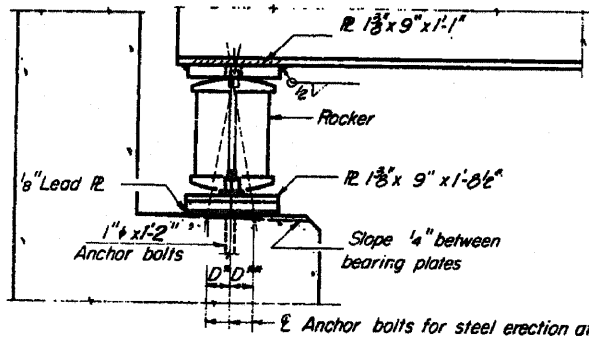


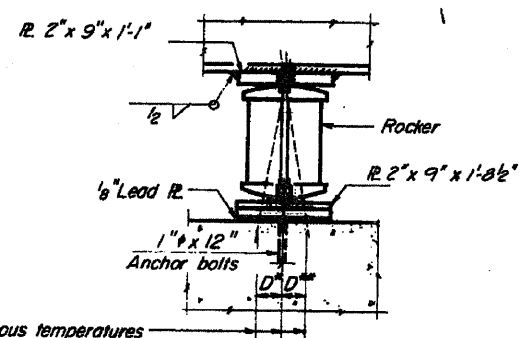
# FOR INFORMATION ONLY

STATE OF ILLINOIS  
DIVISION OF HIGHWAYS

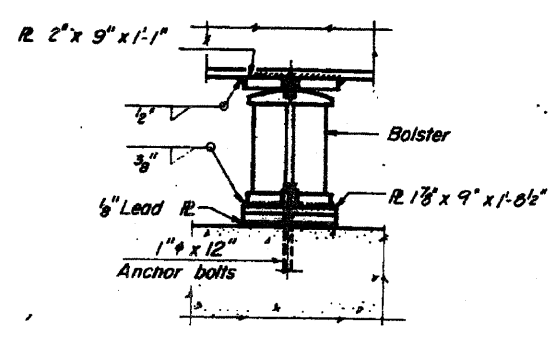
ROUTE NO.	SECTION	COUNTY	TOTAL SHEETS	SHEET NO.
580	260	WHITESIDE	18	9 of 18



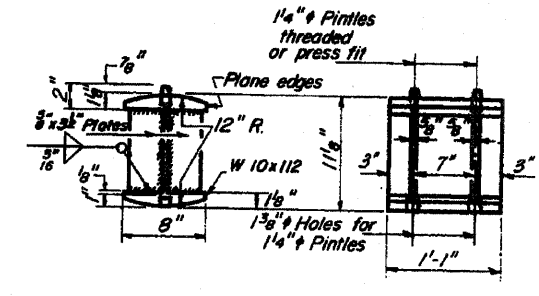
**SECTION**



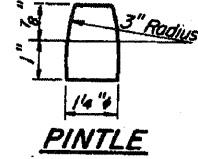
**ELEVATION**



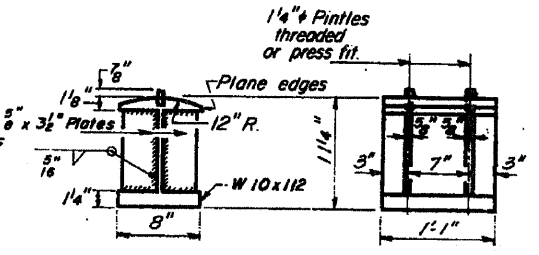
**ELEVATION**



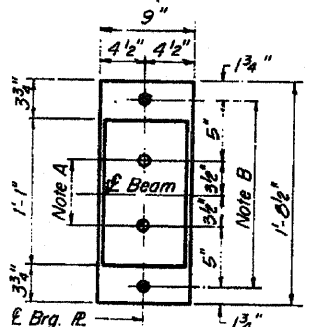
**ROCKER**



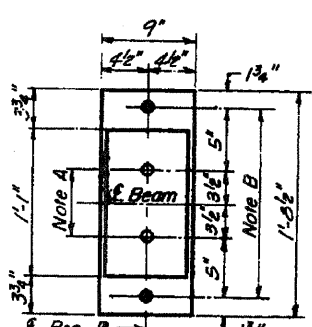
**PINTLE**



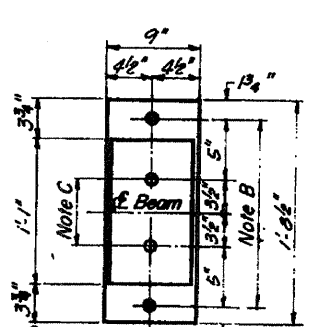
**BOLSTER**



**PLAN AT ABUTMENT**



**PLAN AT PIER**



**PLAN AT PIER**

**NOTE A**  
1 3/8 Holes - 1" deep in top R for pintles Thread or press fit pintles into bottom R.

**NOTE B**  
1 1/2 Holes for 1" anchor bolts. 1/8 x 2 1/2 x 2 1/2 R. Washers under nut.

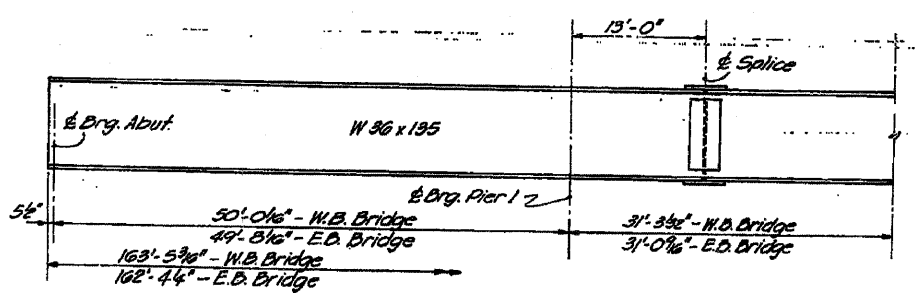
**NOTE C**  
1 3/8 Holes 1" deep in top R only for 1 1/4 pintles.

**NOTES ON SETTING OF ANCHOR BOLTS AT EXP. BRGS.**

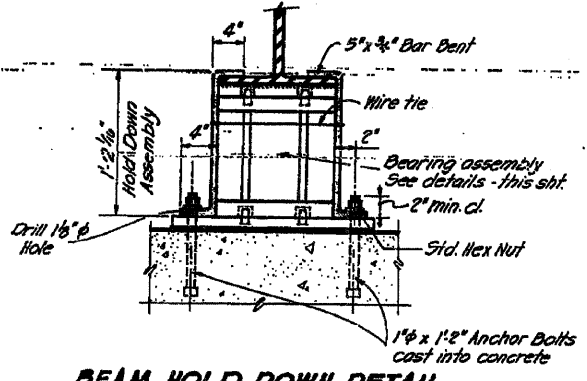
- a) D\* (Side of brg away from fixed brg)  
D\* = 1/8" per each 100' of expansion for every 15° fall below the normal temp. of 50°F
- D\*\* (Side of brg toward fixed brg)  
D\*\* = 1/8" per each 100' of expansion for every 15° rise above the normal temp. of 50°F

- b) After beams have been erected and dimensions D\* or D\*\* determined, holes shall be drilled and anchor bolts shall be grouted in place. All fixed anchor bolts may be built into the masonry.

**BEARING ASSEMBLY DETAILS**



**BEAM ELEVATION**



**BEAM HOLD DOWN DETAIL**

Note: Beams shall be held down at the abutment on the opposite end of the bridge from which the deck pour is commenced. After pouring is completed the hold down assembly shall be removed and nuts placed on the anchor bolts. Cast of hold down assembly incidental to Class X Concrete.

	4 Span	1 Pier	5 Span	2
I <sub>s</sub> (in <sup>4</sup> )	7820	7820	7820	
S <sub>x</sub> (in <sup>3</sup> )	440	440	440	
R/Pt. (k)	1,225	1,225	1,225	
M <sub>1/4</sub> (k)	211.2	394.2	205.2	
I <sub>s</sub> (ksi)	5.8	10.7	5.6	
M <sub>1/4</sub> (k)	330.9	276.6	347.3	
M <sub>2nd</sub> (k)	96.2	76.3	92.6	
M <sub>1/4+2nd</sub> (k)	433.1	352.9	439.9	
I <sub>s</sub> (ksi)	11.8	9.6	12.0	
I <sub>s</sub> TOTAL (ksi)	17.6	20.3	17.6	

	Abut	Pier
R <sub>1/4</sub>	22.8	76.8
R <sub>2</sub>	37.2	35.1
R <sub>2nd</sub>	10.6	12.7
R <sub>TOTAL</sub>	70.6	125.6

DESIGNED	J.P.	19
CHECKED	S.M.K.	
DRAWN	L.R.	
CHECKED	S.M.K.	

I-2-B 9-1-65, 8-1-70

098-0039,90  
**STRUCTURAL STEEL**  
F.A. RTE. 403-SEC. 195-3VB  
WHITESIDE COUNTY  
STATION 2593+91.75

\* FAI Route 88 & FAP Route 309 (I-88 & US 30)  
\*\* D2 Bridge Painting 2009-2