

**INDEX OF SHEETS**

- 1 COVER SHEET
- 2 GENERAL NOTES
- 3 SUMMARY OF QUANTITIES
- 4 TYPICAL SECTIONS
- 5-7 SCHEDULES
- 8-9 TIE POINTS
- 10 PROJECT LAYOUT
- 11-12 DETAILS

**HIGHWAY STANDARDS**

- 000001-05 STANDARD SYMBOLS, ABBREVIATIONS AND PATTERNS
- 001006 DECIMAL OF AN INCH AND OF A FOOT
- 406201-01 MAILBOX TURNOUT
- 482011-03 HMA SHOULDER STRIPS/SHOULDERS WITH RS OR WIDENING & RS PROJECTS
- 635006-03 REFLECTOR AND TERMINAL MARKER PLACEMENT
- 635011-02 REFLECTOR MARKER AND MOUNTING DETAILS
- 667101-01 PERMANENT SURVEY MARKERS
- 701001-02 OFF-ROAD OPERATIONS 2L, 2W, MORE THAN 15' (4.5 m) AWAY
- 701006-03 OFF-ROAD OPERATIONS 2L, 2W, 15' (4.5 m) TO 24" (600 mm) FROM PAVEMENT EDGE
- 701011-02 OFF-ROAD MOVING OPERATIONS 2L, 2W, DAY ONLY
- 701201-03 LANE CLOSURE, 2L, 2W, DAY ONLY, FOR SPEEDS ≥ 45 MPH
- 701301-03 LANE CLOSURE, 2L, 2W, SHORT TIME OPERATIONS
- 701306-02 LANE CLOSURE, 2L, 2W, SLOW MOVING OPERATIONS DAY ONLY, FOR SPEEDS ≥ 45 MPH
- 701311-03 LANE CLOSURE, 2L, 2W, MOVING OPERATIONS - DAY ONLY
- 701901-01 TRAFFIC CONTROL DEVICES
- 780001-02 TYPICAL PAVEMENT MARKINGS
- 781001-03 TYPICAL APPLICATIONS RAISED REFLECTIVE PAVEMENT MARKERS

# STATE OF ILLINOIS

## DEPARTMENT OF TRANSPORTATION

### DIVISION OF HIGHWAYS

# PLANS FOR PROPOSED FEDERAL AID HIGHWAY

## F.A.P. ROUTE 681 (IL 116)

## SECTION (115)RS-3 & (116)RS-2

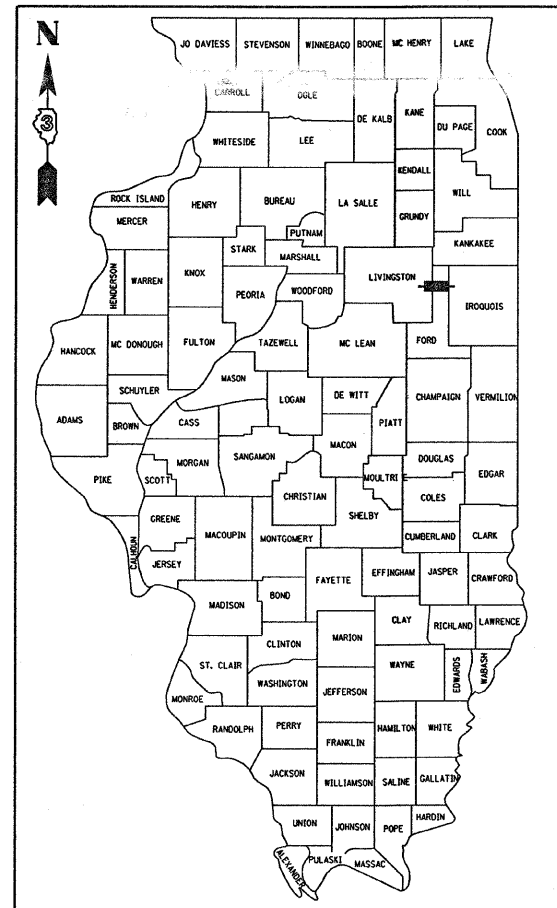
## PROJECT ACF-0681(036)

## FORD & LIVINGSTON COUNTIES

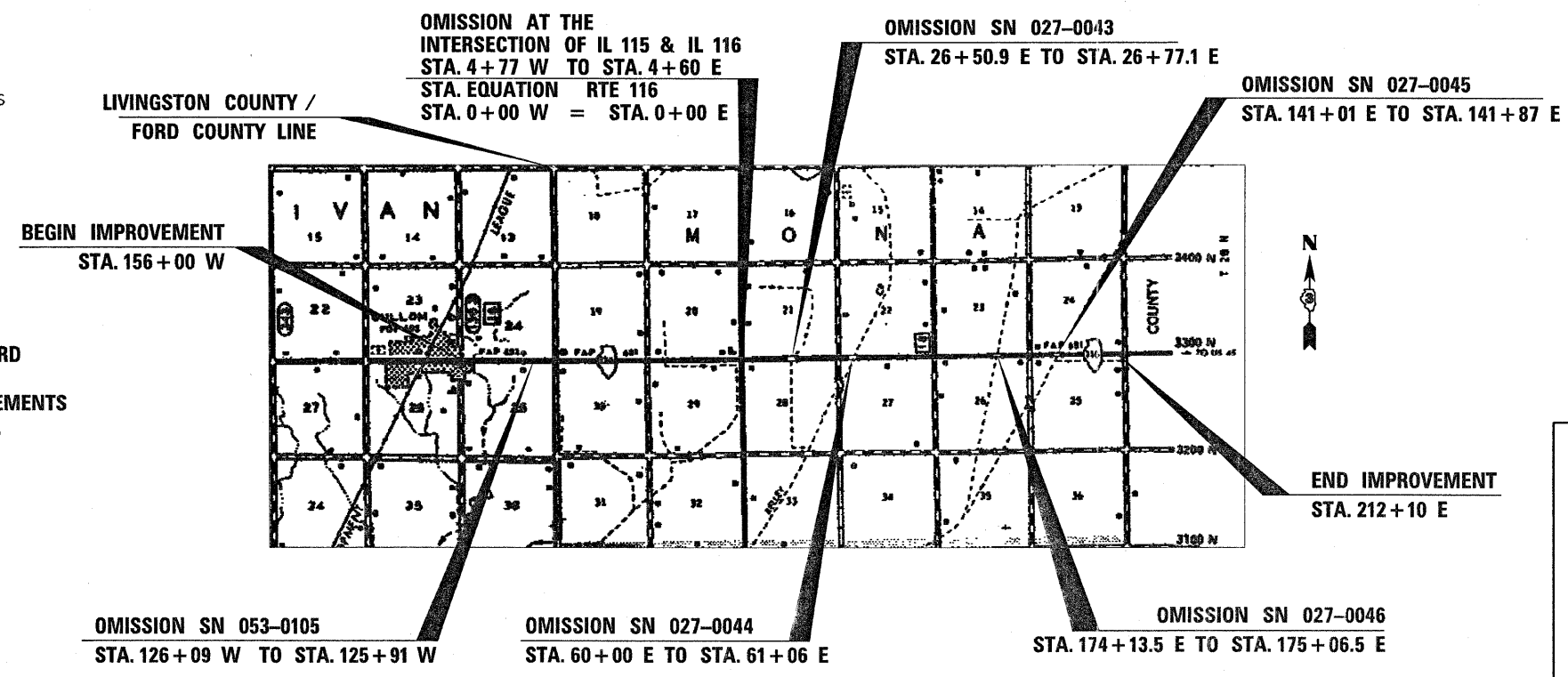
F.A.P. RTE.	SECTION	COUNTY	TOTAL SHEETS	SHEET NO.
681	*	**	12	1

\* (115)RS-3 & (116)RS-2  
\*\* FORD & LIVINGSTON

D-93-023-04      CONTRACT #66422



C-93-024-04  
MILLING AND RESURFACING OF IL 116 FROM THE  
EAST CITY LIMITS OF CULLOM TO THE IROQUOIS COUNTY LINE



FULL SIZE PLANS HAVE BEEN PREPARED USING STANDARD ENGINEERING SCALES, REDUCED SIZED PLANS WILL NOT CONFORM TO STANDARD SCALES, IN MAKING MEASUREMENTS ON REDUCED PLANS, THE ABOVE SCALES MAY BE USED.

MICROFILMED \_\_\_\_\_  
REEL NUMBER \_\_\_\_\_  
AWARDED \_\_\_\_\_  
RESIDENT ENGINEER \_\_\_\_\_  
AS BUILT CHANGES WERE MADE ON THE FOLLOWING SHEETS \_\_\_\_\_

JULIE 1-800-892-0123

DISTRICT 3 NO. (815) 434-6131

PROJECT ENGINEER: JOE KANNEL  
UNIT CHIEF: MICHELE LINDEMANN  
TOWNSHIP: SULLIVAN & MONA

**CONTRACT NO. 66422**

**RURAL MINOR ARTERIAL**

2009 ADT = 1800  
P.V. = 85%    S.U. = 5%    M.U. = 10%

STATE OF ILLINOIS  
DEPARTMENT OF TRANSPORTATION  
DIVISION OF HIGHWAYS

SUBMITTED DECEMBER 12 2009  
George F. Ryan Jr  
DEPUTY DIRECTOR OF HIGHWAYS, REGION ENGINEER

January 30, 2009  
Charles G. Ingersoll  
ENGINEER OF DESIGN AND ENVIRONMENT

January 30, 2009  
Christine M. Reed  
DIRECTOR OF HIGHWAYS, CHIEF ENGINEER

PRINTED BY THE AUTHORITY  
OF THE STATE OF ILLINOIS

February 22, 2008 /ed02304/cover.sht.dgn

F.A.P. RTE.	SECTION	COUNTY	TOTAL SHEETS	SHEET NO.
681	(116RS-3 & 116RS-2)	FORD & LIVINGSTON	12	2
STA.		TO STA.		
FED. ROAD DIST. NO.	ILLINOIS	FED. AID PROJECT		
<b>CONTRACT #66422</b>				

**GENERAL NOTES**

THE THICKNESS OF HMA SHOWN ON THE PLANS IS THE NOMINAL THICKNESS. DEVIATIONS FROM THE NOMINAL THICKNESS WILL BE PERMITTED WHEN SUCH DEVIATIONS OCCUR DUE TO IRREGULARITIES IN THE EXISTING SURFACE OR BASE ON WHICH THE HMA IS PLACED.

THE HMA SURFACE OF ALL MAILBOX TURNOUTS, PRIVATE ENTRANCES, COMMERCIAL ENTRANCES, AND SIDE ROADS SHALL BE MADE NEATLY, IN A WORKMANLIKE MANNER, AND SHALL ACCURATELY CONFORM TO THE SHAPES AND DIMENSIONS SHOWN ON THE PLAN DETAILS. IF REQUIRED BY THE ENGINEER, THE CONTRACTOR SHALL BE REQUIRED TO SAW CUT THE HMA SURFACE TO CONFORM TO THE SHAPES AND DIMENSIONS SHOWN ON THE PLAN DETAILS. THIS WORK SHALL BE INCLUDED IN THE COST OF THE HMA SURFACE

THE ENGINEER WILL BE THE SOLE JUDGE CONCERNING CURING TIME FOR THE VARIOUS HMA LIFTS.

SEEDING SHALL NOT BE PERMITTED AT ANY TIME WHEN THE GROUND IS FROZEN, WET, OR IN AN UNTILLABLE CONDITION. LOCATIONS TO BE SEEDED WILL BE DETERMINED BY THE ENGINEER.

THE FINISHED EARTHWORK SHALL HAVE A VEGETATION SUSTAINING SOIL COVERING THE TOP FOUR INCHES IN AREAS TO BE SEEDED OR SODDED. THE VEGETATION SUSTAINING SOIL REQUIRED WILL NOT BE PAID FOR SEPARATELY BUT SHALL BE INCLUDED IN THE COST OF FURNISHED EXCAVATION.

ANY REFERENCE TO A STANDARD IN THESE PLANS SHALL BE INTERPRETED TO MEAN THE EDITION AS INDICATED BY THE SUBNUMBER SHOWN IN THE LIST OF STANDARDS OR THE COPY INCLUDED IN THESE PLANS.

THE FOLLOWING RATES OF APPLICATION HAVE BEEN USED IN CALCULATING PLAN QUANTITIES:

GRANULAR MATERIALS	2.05	TONS / CU YD
BITUMINOUS MAT PRIME COAT	0.08	GAL / SQ YD OR
	0.375	GAL / SQ YD
AGGREGATE PRIME COAT	0.002	TONS / SQ YD
HMA RESURFACING	112	LBS / SQ YD / IN
SHORT TERM PAVEMENT MARKING	10	FT /100 FT OF APPLICATION
MIX FOR CRACKS, JTS & FLGWYS	0.0003	TONS / SQ YD
LEVEL BINDER (HAND METHOD)	0.0005	TONS / SQ YD
SUPPLEMENTAL WATERING	3	GAL / SQ YD / APPLICATION
CALCIUM CHLORIDE	2	LB / SQ YD / APPLICATION
TEMPORARY DITCH CHECKS	5	TONS AGGREGATE

THE CONTRACTOR SHALL CONTACT JULIE AT LEAST 48 HOURS PRIOR TO EXCAVATION TO DETERMINE WHICH UTILITIES ARE IN THE AREA.

STATE OF ILLINOIS  
DEPARTMENT OF TRANSPORTATION  
DISTRICT THREE

PREPARED BY: *D. Paul*  
DISTRICT STUDIES & PLANS ENGINEER

DATE: 12/12/08

EXAMINED BY: *Herb Jung*  
DISTRICT CONSTRUCTION ENGINEER

*Tom L. Miller*  
DISTRICT MATERIALS ENGINEER

*Bruce A. Hecker*  
DISTRICT OPERATIONS ENGINEER

REVISIONS	
NAME	DATE

ILLINOIS DEPARTMENT OF TRANSPORTATION  
**GENERAL NOTES**

F.A.P. NO.	SECTION	COUNTY	TOTAL SHEETS	SHEET NO.
-681	(1150RS-3 & 1161RS-2)	FORD & LIVINGSTON	12	3
STA.		TO STA.		
FED. ROAD DIST. NO. 4		ILLINOIS	FED. AID PROJECT	

CODE NO.	ITEM	UNIT	TOTAL QUANTITY	80% FED. 20% STATE	
				I000 FORD COUNTY	I000 LIVINGSTON COUNTY
				20400800	FURNISHED EXCAVATION
25000200	SEEDING, CLASS 2	ACRE	0.06	0.05	0.01
25000400	NITROGEN FERTILIZER NUTRIENT	POUND	5.5	4.7	0.8
25000500	PHOSPHORUS FERTILIZER NUTRIENT	POUND	5.5	4.7	0.8
25000600	POTASSIUM FERTILIZER NUTRIENT	POUND	5.5	4.7	0.8
25100630	EROSION CONTROL BLANKET	SQ YD	287	246	41
28100107	STONE RIP RAP, CLASS A4	SQ YD	86	86	0
28200200	FILTER FABRIC	SQ YD	86	86	0
40200800	AGGREGATE SURFACE COURSE, TYPE B	TON	4.3	4.3	0
40600100	BITUMINOUS MATERIALS(PRIME COAT)	GALLON	16539.9	14148.4	2391.5
40600300	AGGREGATE(PRIME COAT)	TON	412.7	352.7	60
40600400	MIXTURE FOR CRACKS, JOINTS AND FLANGEWAYS	TON	30.4	26	4.4
40600525	LEVELING BINDER (HAND METHOD), N50	TON	50.8	43.5	7.3
40600625	LEVELING BINDER (MACHINE METHOD), N50	TON	4282.9	3664.6	618.3
40600895	CONSTRUCTING TEST STRIP	EACH	1	0.85	0.15
40600990	TEMPORARY RAMP	SQ YD	274.7	231.5	43.2
40603310	HOT-MIX ASPHALT SURFACE COURSE, MIX "C", N50	TON	8648.7	7394.3	1254.4
40800050	INCIDENTAL HOT-MIX ASPHALT SURFACING	TON	216.8	183.9	32.9
44000155	HOT-MIX ASPHALT SURFACE REMOVAL, 1 1/2"	SQ YD	104657.2	89433.1	15224.1
48101200	AGGREGATE SHOULDERS TYPE B	TON	2699	2307	392
48203021	HOT-MIX ASPHALT SHOULDERS, 6"	SQ YD	207	207	0
66700205	PERMANENT SURVEY MARKERS, TYPE I	EACH	4	4	0
67000400	ENGINEER'S FIELD OFFICE, TYPE A	CAL MO	4	3.4	0.6
67100100	MOBILIZATION	L SUM	1	0.85	0.15
70100450	TRAFFIC CONTROL AND PROTECTION, STANDARD 701201	L SUM	1	0.85	0.15
70100460	TRAFFIC CONTROL AND PROTECTION, STANDARD 701306	L SUM	1	0.85	0.15
70300100	SHORT-TERM PAVEMENT MARKING	FOOT	7174	6138	1036
70300220	TEMPORARY PAVEMENT MARKING - LINE 4"	FOOT	73056	61382	11674
70300240	TEMPORARY PAVEMENT MARKING - LINE 6"	FOOT	8969	7673	1296
70301000	WORK ZONE PAVEMENT MARKING REMOVAL	SQ FT	1196	1023	173
78001110	PAINT PAVEMENT MARKING-LINE 4"	FOOT	73056	61382	11674
78001130	PAINT PAVEMENT MARKING-LINE 6"	FOOT	8969	7673	1296
78100100	RAISED REFLECTIVE PAVEMENT MARKER	EACH	450	385	65
78200405	GUARDRAIL MARKERS	EACH	210	194	16
78201000	TERMINAL MARKER - DIRECT APPLIED	EACH	42	34	8
78300200	RAISED REFLECTIVE PAVEMENT MARKER REMOVAL	EACH	450	385	65
Z0021700	EXPANSION JOINT REHABILITATION	FOOT	320	254	66

\* SPECIALTY ITEMS

REVISIONS	
NAME	DATE

ILLINOIS DEPARTMENT OF TRANSPORTATION

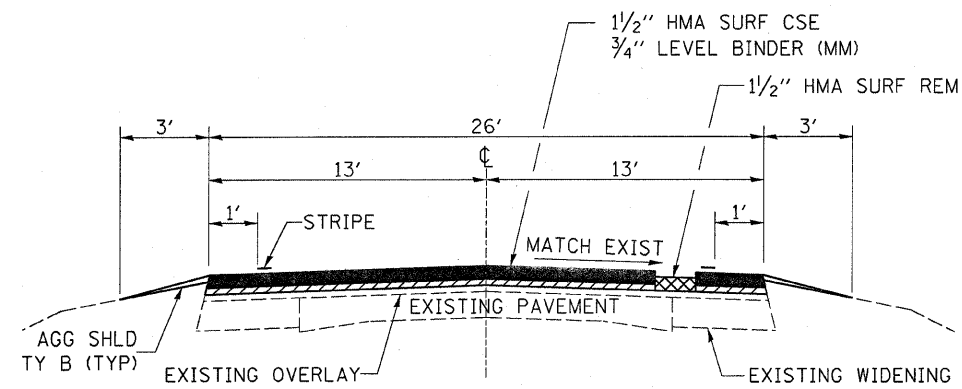
## SUMMARY OF QUANTITIES

SCALE: VERT. \_\_\_\_\_  
 HORIZ. \_\_\_\_\_

DATE \_\_\_\_\_

DRAWN BY \_\_\_\_\_  
 CHECKED BY \_\_\_\_\_

\* DATE-TIME: 01/14/2010 10:40:10 AM C:\work\1001\cor\pnt\erc\dms8240\summary.dgn

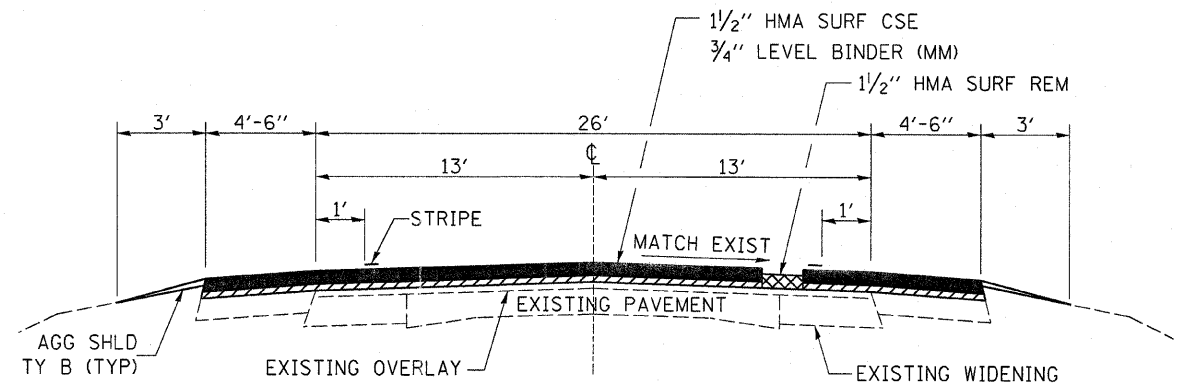


**PROPOSED TYPICAL SECTION 1**

156+00 W TO 5+97 E  
 6+94 E TO 52+66 E  
 58+85 E TO 212+10 E

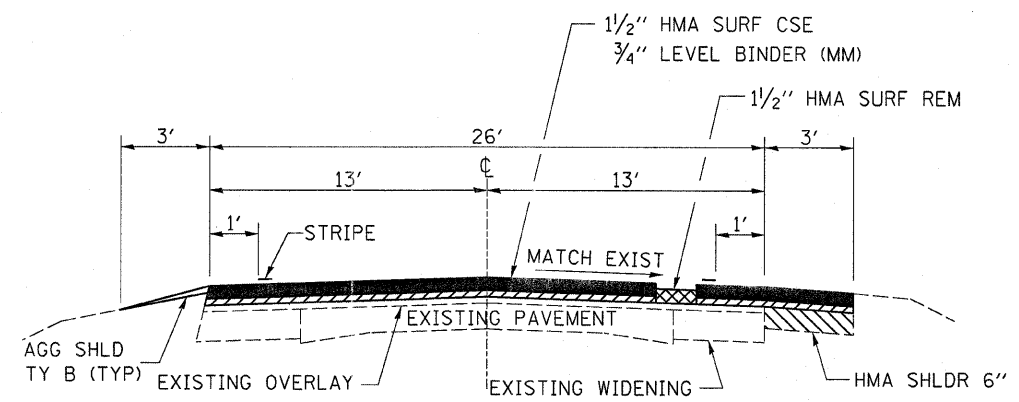
OMISSIONS:

- S.N. 053-0105, STA 126+09 W TO 125+91 W
- INT IL 115 & IL 116, STA 4+60 W TO 4+77 E
- S.N. 027-0043, STA 26+50.9 E TO 26+77.1 E
- S.N. 027-0044, STA 60+00 E TO 61+066 E
- S.N. 027-0045, STA 141+01 E TO 141+87 E
- S.N. 027-0046, STA 174+13.5 E TO 175+06.5 E



**PROPOSED TYPICAL SECTION 2**

STA. 5+97 E TO 6+94 E



**PROPOSED TYPICAL SECTION 3**

STA. 52+66 E TO 58+85 E

BITUMINOUS MIXTURE TABLE

MIX	AC/PC GRADE	MAX % RAP *	DESIGN AIR VOIDS	MIXTURE COMPOSITION	FRICTION AGGREGATE	DENSITY CONTROL METHOD
HMA SURFACE	PG 64-22	15%	4% @ N50	IL 12.5 or IL 9.5	MIX C	CORRELATION
HMA LEVEL BINDER	PG 64-22	25%	4% @ N50	IL 9.5		

\* WHEN MORE THAN 20% RAP IS USED, A SOFTER ASPHALT BINDER (PG58-22) MAY BE REQUIRED AS DETERMINED BY THE ENGINEER.

F.A.P. RTE.	SECTION	COUNTY	TOTAL SHEETS	SHEET NO.
681	(115)RS-3 & (116)RS-2	FORD & LIVINGSTON	12	5
STA. _____		TO STA. _____		
FED. ROAD DIST. NO. _____		ILLINOIS FED. AID PROJECT		

**CONTRACT #66422**

**MAINLINE SCHEDULE**

LOCATION		LENGTH	RESURF AREA	HMA SURF CSE	LEVEL BINDER (HM)	LEVEL BINDER (MM)	HMA SURF REM 1 1/2"	TEMP RAMP	BIT MAT (PR CT)	AGG (PR CT)	MIX FOR CRACKS JTS & FLGWYS	AGG SHLD TY B
STA TO STA		FOOT	SQ YD	TON	TON	TON	SQ YD	SQ YD	GALLON	TON	TON	TON
<b>LIVINGSTON COUNTY</b>												
156+00 W TO 155+70 W	HMA TAPER	30	86.7	7.7	0.0	0.9	86.7	14.4	7	0.2	0.0	2.3
155+70 W TO 126+39 W		2931	8467.3	711.3	4.2	355.6	8467.3		1355	33.9	2.5	222.5
126+39 W TO 126+09 W	HMA TAPER	30	86.7	7.7	0.0	0.9	86.7	14.4	7	0.2	0.0	2.3
126+09 W TO 125+91 W	BRIDGE OMISSION *053-0105											
125+91 W TO 125+61 W	HMA TAPER	30	86.7	7.7	0.0	0.9	86.7	14.4	7	0.2	0.0	2.3
125+61 W TO 104+18 W		2143	6190.9	520.0	3.1	260.0	6190.9		991	24.8	1.9	162.7
<b>SUBTOTALS</b>				<b>1254.4</b>	<b>7.3</b>	<b>618.3</b>	<b>14918.3</b>	<b>43.2</b>	<b>2367</b>	<b>59.3</b>	<b>4.4</b>	<b>392.1</b>
<b>FORD COUNTY</b>												
104+18 W TO 5+07 W		9911	28631.8	2405.1	14.3	1202.5	28631.8		4581	114.5	8.6	752.5
5+07 W TO 4+77 W	HMA TAPER	30	86.7	7.7	0.0	0.9	86.7	14.4	7	0.2	0.0	2.3
4+77 W TO 4+60 E	OMIT INTERSECTION AT 115											
4+60 E TO 4+90 E	HMA TAPER	30	86.7	7.7	0.0	0.9	86.7	14.4	7	0.2	0.0	2.3
4+90 E TO 26+20.9 E		2130.9	6155.9	517.1	3.1	258.5	6155.9		985	24.6	1.8	161.8
26+20.9 E TO 26+50.9 E	HMA TAPER	30	86.7	7.7	0.0	0.9	86.7	14.4	7	0.2	0.0	2.3
26+50.9 E TO 26+77.1 E	BRIDGE OMISSION *027-0043											
26+77.1 E TO 27+07.1 E	HMA TAPER	30	86.7	7.7	0.0	0.9	86.7	14.4	7	0.2	0.0	2.3
27+07.1 E TO 59+70 E		3262.9	9426.2	791.8	4.7	395.9	9426.2		1508	37.7	2.8	247.7
59+70 E TO 60+00 E	HMA TAPER	30	86.7	7.7	0.0	0.9	86.7	14.4	7	0.2	0.0	2.3
60+00 E TO 61+06 E	BRIDGE OMISSION *027-0044											
61+06 E TO 61+36 E	HMA TAPER	30	86.7	7.7	0.0	0.9	86.7	14.4	7	0.2	0.0	2.3
61+36 E TO 140+71 E		7935	22923.3	1925.6	11.5	962.8	22923.3		3668	91.7	6.9	602.5
140+71 E TO 141+01 E	HMA TAPER	30	86.7	7.7	0.0	0.9	86.7	14.4	7	0.2	0.0	2.3
141+01 E TO 141+87 E	BRIDGE OMISSION *027-0045											
141+87 E TO 142+17 E	HMA TAPER	30	86.7	7.7	0.0	0.9	86.7	14.4	7	0.2	0.0	2.3
142+17 E TO 173+83.5 E		3166.5	9147.7	768.4	4.6	384.2	9147.7		1464	36.6	2.7	240.4
173+83.5 E TO 174+13.5 E	HMA TAPER	30	86.7	7.7	0.0	0.9	86.7	14.4	7	0.2	0.0	2.3
174+13.5 E TO 175+06.5 E	BRIDGE OMISSION *027-0046											
175+06.5 E TO 175+36.5 E	HMA TAPER	30	86.7	7.7	0.0	0.9	86.7	14.4	7	0.2	0.0	2.3
175+36.5 E TO 211+80 E		3643.5	10525.7	884.2	5.3	442.1	10525.7		1684	42.1	3.2	276.6
211+80 E TO 212+10 E	HMA TAPER	30	86.7	7.7	0.0	0.9	86.7	14.4	7	0.2	0.0	2.3
<b>SUBTOTALS</b>				<b>7376.9</b>	<b>43.5</b>	<b>3655.9</b>	<b>87764.3</b>	<b>158.4</b>	<b>13967.0</b>	<b>349.4</b>	<b>26.0</b>	<b>2306.8</b>
<b>TOTAL</b>		<b>35543.8</b>		<b>8631.3</b>	<b>50.8</b>	<b>4274.2</b>	<b>102682.6</b>	<b>201.6</b>	<b>16334</b>	<b>408.7</b>	<b>30.4</b>	<b>2698.9</b>

DATE-TIME\* c:\pw-work\pwl\dot\carpenter\dms82640\detail.s.dgn

REVISIONS	
NAME	DATE

ILLINOIS DEPARTMENT OF TRANSPORTATION

**SCHEDULES**

SCALE: VERT. \_\_\_\_\_  
 HORIZ. \_\_\_\_\_  
 DATE \_\_\_\_\_ DRAWN BY \_\_\_\_\_  
 CHECKED BY \_\_\_\_\_

**CONTRACT #66422**

SIDEROAD SCHEDULE															
LOCATION	TYPE	DESCRIPTION	LENGTH	WIDTH (EOP)	WIDTH (2ND MEAS.)	WIDTH (3RD MEAS.)	WIDTH (END)	AREA	BIT MATLS PR CT	AGG PRIME COAT	INC HMA SURF	HMA SURF REM 1 1/2"	AGG SURF CSE	TEMP RAMP	
			FOOT	FOOT	FOOT	FOOT	FOOT	SQ YD	GAL	TON	TON	SQ YD	TON	SQ YD	
LIVINGSTON COUNTY															
104+18 W LT	A3	1200 E. RD.	30.0	95.0	36.0	22.0	19.0	127.8	10.2	0.3	14.3	127.8	0.0	0.0	
FORD COUNTY															
104+18 E RT	A3/AGG	1200 E. RD.	27.0	74.0	27.0	22.0	18.0	98.9	7.9	0.2	10.4	98.9	2.6		
52+70 E LT	A3	1300 E. RD.	30.0	106.0	41.0	29.0	22.5	149.2	11.9	0.3	15.7	149.2		12.5	
52+70 E RT	A3	1300 E. RD.	30.0	35.0	30.0	20.5	17.0	85.0	6.8	0.2	8.9	85.0		9.4	
53+25 E LT	A3	1500 E. RD.	30.0	79.0	40.0	26.5	18.0	127.8	10.2	0.3	13.4	127.8		10.0	
53+25 E RT	A3	1500 E. RD.	30.0	72.0	33.5	21.0	15.0	108.9	8.7	0.2	11.4	108.9		8.3	
106+59 E LT	A3	1600 E. RD.	30.0	86.0	40.0	26.5	18.0	131.7	10.5	0.3	13.8	131.7		10.0	
106+69 E RT	HMA	1600 E. RD.	25.0	98.0	46.0	38.0	26.0	138.9	11.1	0.3	14.6	138.9		14.4	
159+23 E LT	AGG	1700 E. RD.	30.0	64.0	23.0	14.0	12.0	83.3	31.3		8.8		1.7		
159+23 E RT	A3	1700 E. RD.	30.0	80.0	33.8	21.8	15.0	114.6	9.2	0.2	12.0	114.6		8.3	
SUBTOTALS									107.6	1.9	109.0	954.8	4.3	73.1	
TOTAL									117.9	2.2	123.3	1082.6	4.3	73.1	

EXPANSION JOINTS REHAB	
LOCATION	LENGTH
STA	FOOT
LIVINGSTON	
126+09 W	33.0
125+91 W	33.0
<b>SUBTOTALS</b>	<b>66.0</b>
FORD	
26+50.9 W	39.3
26+77.1 W	39.3
60+00 E	30.0
61+06 E	33.0
141+01 E	26.3
141+87 E	26.3
174+13.5 E	30.0
175+06.5 E	30.0
<b>SUBTOTALS</b>	<b>254.1</b>
<b>TOTALS</b>	<b>320.1</b>

SEEDING SCHEDULE							
LOCATION	DESCRIPTION	FURN EXC	SEED CL 2	NIT FERT NUT	PHOS FERT NUT	POT FERT NUT	EROSION CONTROL BLANKET
		CU YD	ACRE	LB	LB	LB	SQ YD
LIVINGSTON COUNTY							
104+18 W LT	1200 E. RD.	2.2	0.009	0.81	0.81	0.81	41.3
FORD COUNTY							
104+18 E RT	1200 E. RD.	1.7	0.007	0.63	0.63	0.63	32.0
52+70 E LT	1300 E. RD.	1.0	0.004	0.36	0.36	0.36	18.2
52+70 E RT	1300 E. RD.	1.9	0.008	0.72	0.72	0.72	35.6
53+25 E LT	1500 E. RD.	0.9	0.003	0.27	0.27	0.27	16.0
53+25 E RT	1500 E. RD.	1.7	0.007	0.63	0.63	0.63	31.6
106+59 E LT	1600 E. RD.	0.8	0.003	0.27	0.27	0.27	15.6
106+69 E RT	1600 E. RD.	0.8	0.003	0.27	0.27	0.27	14.7
159+23 E LT	1700 E. RD.	2.1	0.008	0.72	0.72	0.72	40.0
159+23 E RT	1700 E. RD.	2.3	0.009	0.81	0.81	0.81	42.2
<b>SUBTOTAL</b>		<b>13.2</b>	<b>0.052</b>	<b>4.68</b>	<b>4.68</b>	<b>4.68</b>	<b>245.9</b>
<b>TOTAL</b>		<b>15.4</b>	<b>0.061</b>	<b>5.49</b>	<b>5.49</b>	<b>5.49</b>	<b>287.2</b>

ENTRANCE SCHEDULE												
LOCATION	SIDE	TYPE	MATL	LENGTH	WIDTH (EOP)	WIDTH (END)	AREA	BIT MAT PR CT	AGG PR CT	INC HMA SURF	HMA SURF REM 1 1/2"	
				FOOT	FOOT	FOOT	SQ YD	GAL	TON	TON	SQ YD	
LIVINGSTON COUNTY												
142+84 W	SOUTH	MBT	HMA	5	73	21	26.1	2.1	0.05	2.7	26.1	
142+75 W	NORTH	PE	AGG/HMA	11	53	22	45.8	3.7	0.09	4.8	45.8	
118+96 W	NORTH	PE	AGG/HMA	11	47	19	40.3	3.2	0.08	4.2	40.3	
118+57 W	SOUTH	MBT	HMA	7	77	25	39.7	3.2	0.08	4.2	39.7	
117+25 W	SOUTH	PE	HMA	10	34	13	26.1	2.1	0.05	2.7	26.1	
SUBTOTALS								<b>14.3</b>	<b>0.35</b>	<b>18.6</b>	<b>178.0</b>	
FORD COUNTY												
97+44 W	SOUTH	PE+MBT	AGG/HMA	10	95	25	66.7	5.3	0.13	7.0	66.7	
50+61 W	NORTH	PE	AGG/HMA	14	50	14	49.8	4.0	0.10	5.2	49.8	
10+72 W	SOUTH	PE	AGG/HMA	10	49	21	38.9	3.1	0.08	4.1	38.9	
5+11 E	SOUTH	PE	AGG/HMA	12.5	63	26	61.8	4.9	0.12	6.5	61.8	
32+12 E	NORTH	CE	AGG/HMA	14	92	44	105.8	8.5	0.21	11.1	105.8	
47+30 E	SOUTH	PE + MBT	AGG/HMA	10	70	19	49.4	4.0	0.10	5.2	49.4	
80+31 E	SOUTH	PE + MBT	AGG/HMA	10	72	26.5	54.7	4.4	0.11	5.7	54.7	
128+45 E	NORTH	CE	HMA	10	81	52	73.9	5.9	0.15	7.8	73.9	
132+37 E	NORTH	CE	HMA	10	109	44	85.0	6.8	0.17	8.9	85.0	
156+57 E	SOUTH	PE + MBT	AGG/HMA	10	95	24	66.1	5.3	0.13	6.9	66.1	
161+57 E	NORTH	PE	AGG/HMA	10	73.5	38	61.9	5.0	0.12	6.5	61.9	
SUBTOTALS								<b>57.2</b>	<b>1.42</b>	<b>74.9</b>	<b>714</b>	
TOTAL								<b>71.5</b>	<b>1.8</b>	<b>93.5</b>	<b>892.0</b>	

REVISIONS	
NAME	DATE

ILLINOIS DEPARTMENT OF TRANSPORTATION

**SCHEDULES**

SCALE: VERT. \_\_\_\_\_  
HORIZ. \_\_\_\_\_  
DATE \_\_\_\_\_

DRAWN BY \_\_\_\_\_  
CHECKED BY \_\_\_\_\_

**CONTRACT #66422**

PAVEMENT MARKING							
LOCATION	SIDE	LENGTH	PAINT PVMT MARK LINE 4"		PAINT PVMT MARK LINE 6"	RAISED REF PVMT MARK	RAISED REF PVMT MARK REM
			WHITE FOOT	YELLOW FOOT	YELLOW FOOT	EACH	EACH
<b>LIVINGSTON</b>							
156+00 W TO 104+18 W		5182	10364		1296	65	65
<b>NO PASS ZONE</b>							
144+50 W TO 137+30 W	EASTBOUND	720		720			
134+30 W TO 128+40 W	WESTBOUND	590		590			
<b>SUBTOTALS</b>			<b>10364</b>	<b>1310</b>	<b>1296</b>	<b>65</b>	<b>65</b>
<b>FORD</b>							
104+18 W TO 4+77 W		9941	19882		2485	125	125
4+60 E TO 212+10 E		20750	41500		5188	260	260
<b>SUBTOTALS</b>			<b>61382</b>		<b>7673</b>	<b>385</b>	<b>385</b>
<b>TOTALS</b>			<b>73056</b>		<b>8969</b>	<b>450</b>	<b>450</b>

TEMPORARY PAVEMENT MARKING							
LOCATION	SIDE	LENGTH	TEMP PAINT PVMT MARK 4"		TEMP PAINT PVMT MARK 6"	SHORT TERM PVMT MARK	WORK ZONE PVMT MARK REM
			WHITE FOOT	YELLOW FOOT	YELLOW FOOT	FOOT	SQ FT
<b>LIVINGSTON</b>							
156+00 W TO 104+18 W		5182	10364		1296	1036	173
<b>NO PASS ZONE</b>							
144+50 W TO 137+30 W	EASTBOUND	720		720			
134+30 W TO 128+40 W	WESTBOUND	590		590			
<b>SUBTOTAL</b>			<b>10364</b>	<b>1310</b>	<b>1296</b>	<b>1036</b>	<b>173</b>
<b>FORD</b>							
104+18 W TO 4+77 W		9941	19882		2485	1988	331
4+60 E TO 212+10 E		20750	41500		5188	4150	692
<b>SUBTOTAL</b>			<b>61382</b>		<b>7673</b>	<b>6138</b>	<b>1023</b>
<b>TOTALS</b>			<b>73056</b>		<b>8969</b>	<b>7174</b>	<b>1196</b>

GUARDRAIL MARKERS			
LOCATION	SIDE	GUARDRAIL MARK	TERM MARK DIRECT APPLIED
STA		EACH	EACH
<b>LIVINGSTON</b>			
148+65 W TO 150+05 W	SOUTH	4	2
148+40 W TO 149+82 W	NORTH	4	2
124+78 W TO 127+22 W	NORTH	4	2
124+78 W TO 127+22 W	SOUTH	4	2
<b>SUBTOTALS</b>		<b>16</b>	<b>8</b>
<b>FORD</b>			
58+55 W TO 53+25 W	SOUTH	7	2
26+78 W TO 19+78 W	SOUTH	9	2
19+44 W TO 10+87 W	SOUTH	11	2
4+75 E TO 10+57 E	SOUTH	8	1
21+37 E TO 29+03 E	SOUTH	10	2
21+62 E TO 29+40 E	NORTH	10	2
53+55 E TO 53+87 E	SOUTH	4	2
53+87 E TO 62+39 E	NORTH	11	2
58+70 E TO 62+46 E	SOUTH	5	2
62+93 E TO 63+95 E	NORTH	4	2
106+36 E TO 140+01E	SOUTH	42	4
140+01E TO 147+01 E	NORTH	9	4
170+76 E TO 172+57 E	NORTH	4	2
170+76 E TO 175+74 E	SOUTH	7	1
173+23 E TO 176+16 E	NORTH	4	2
176+74 E TO 179+40 E	NORTH	4	2
176+31 E TO 212+10 E	SOUTH	45	
<b>SUBTOTALS</b>		<b>194</b>	<b>34</b>
<b>TOTAL</b>		<b>210</b>	<b>42</b>

SHOULDER AND DITCH STABILIZATION SCHEDULE										
LOCATION	LENGTH	SHLDR WIDTH	DITCH WIDTH	HMA SHLDR 6"	HMA SURF CSE	LEVEL BIND (MM)	BIT MAT PRIME COAT	STONE RIPRAP CL A4	FILTER FABRIC	
STA	FOOT	FOOT	FOOT	SQ YD	TON	TON	GAL	SQ YD	SQ YD	
<b>FORD COUNTY</b>										
52+55 E TO 52+66 E	11		11					13.4	13.4	
52+66 E TO 53+05 E	39	3	11	13	1.1	0.5	1.0	47.7	47.7	
53+05 E TO 53+25 E	20	3	11	7	0.6	0.3	0.6	24.4	24.4	
53+25 E TO 58+85 E	560	3	11	187	15.7	7.9	15.0			
<b>TOTALS</b>				<b>207</b>	<b>17.4</b>	<b>8.7</b>	<b>16.6</b>	<b>85.5</b>	<b>85.5</b>	

PERMANENT SURVEY MARKERS	
LOCATION	EACH
<b>STA</b>	
<b>FORD</b>	
104+18 W	1
52+70 W	1
53+25 E	1
159+26 E	1
<b>TOTALS</b>	<b>4</b>

REVISIONS	
NAME	DATE

ILLINOIS DEPARTMENT OF TRANSPORTATION

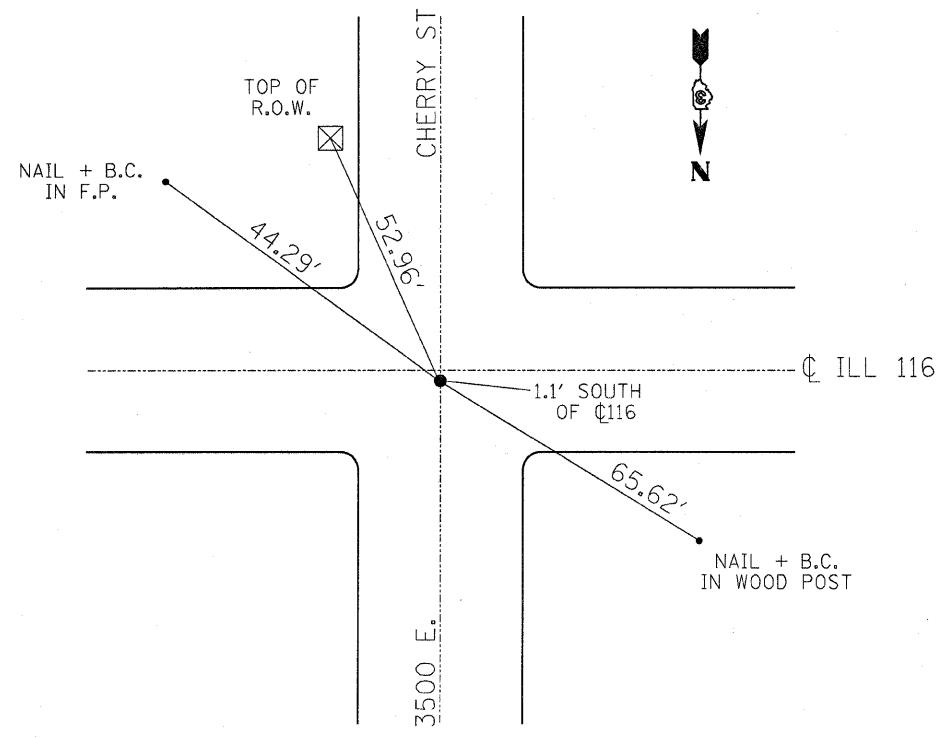
**SCHEDULES**

SCALE: VERT. \_\_\_\_\_  
 DATE: \_\_\_\_\_ HORIZ. \_\_\_\_\_  
 DRAWN BY \_\_\_\_\_  
 CHECKED BY \_\_\_\_\_

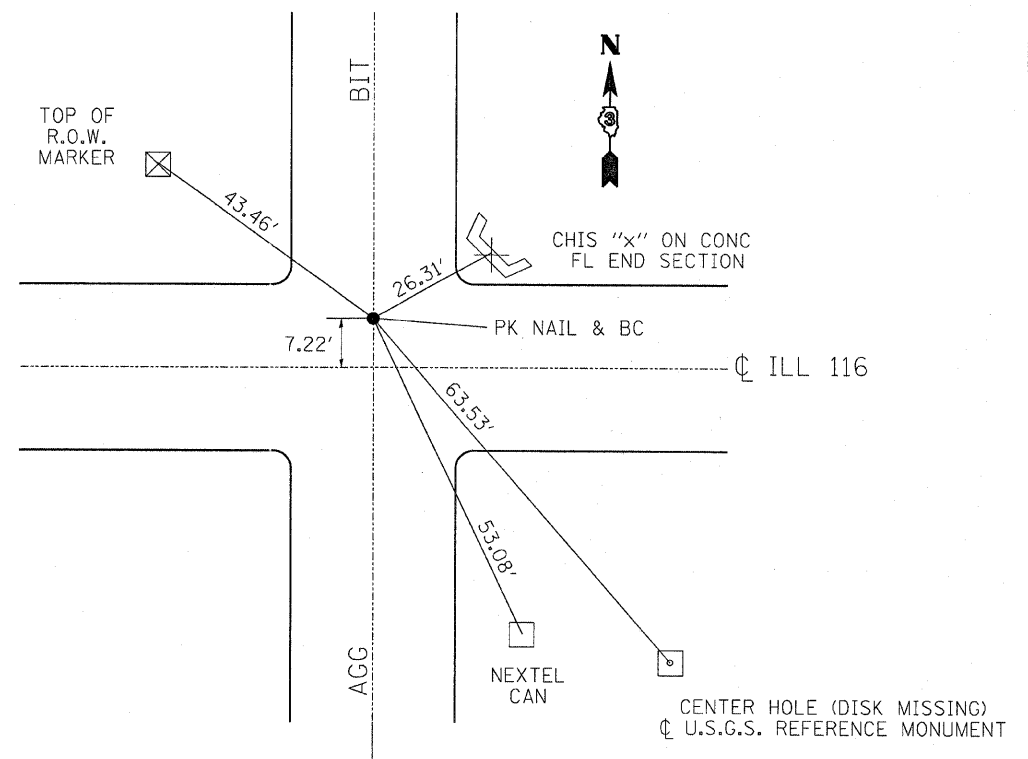
\* DATE - TIME \*  
 C:\p\_wor\k\p\_wor\carpenter\dms82640\def01 is .dgn

F.A.P. RTE.	SECTION	COUNTY	TOTAL SHEETS	SHEET NO.
681	(115)RS-3 & (116)RS-2	FORD & LIVINGSTON	12	8
STA. _____		TO STA. _____		
FED. ROAD DIST. NO. _____		ILLINOIS FED. AID PROJECT		

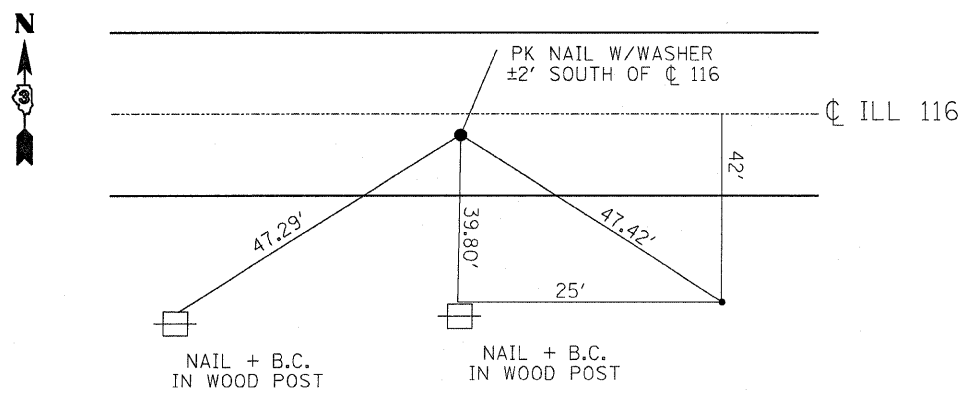
**CONTRACT #66422**



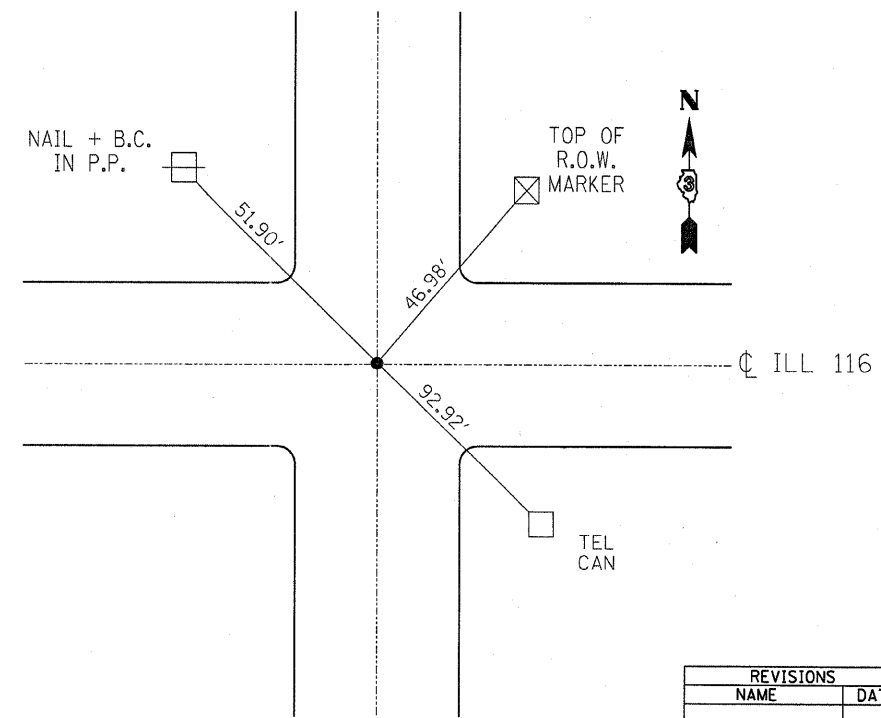
**BRASS PLUG  
SEC 23 T28N-R 8E**



**BRASS PLUG  
SEC 30 T28N-R 9E**



**SEC 30 T28N-R 9E**



**BRASS PLUG  
SEC 19 T28N-R 9E**

REVISIONS	
NAME	DATE

ILLINOIS DEPARTMENT OF TRANSPORTATION

**TIE POINTS**

SCALE: VERT. \_\_\_\_\_  
HORIZ. \_\_\_\_\_

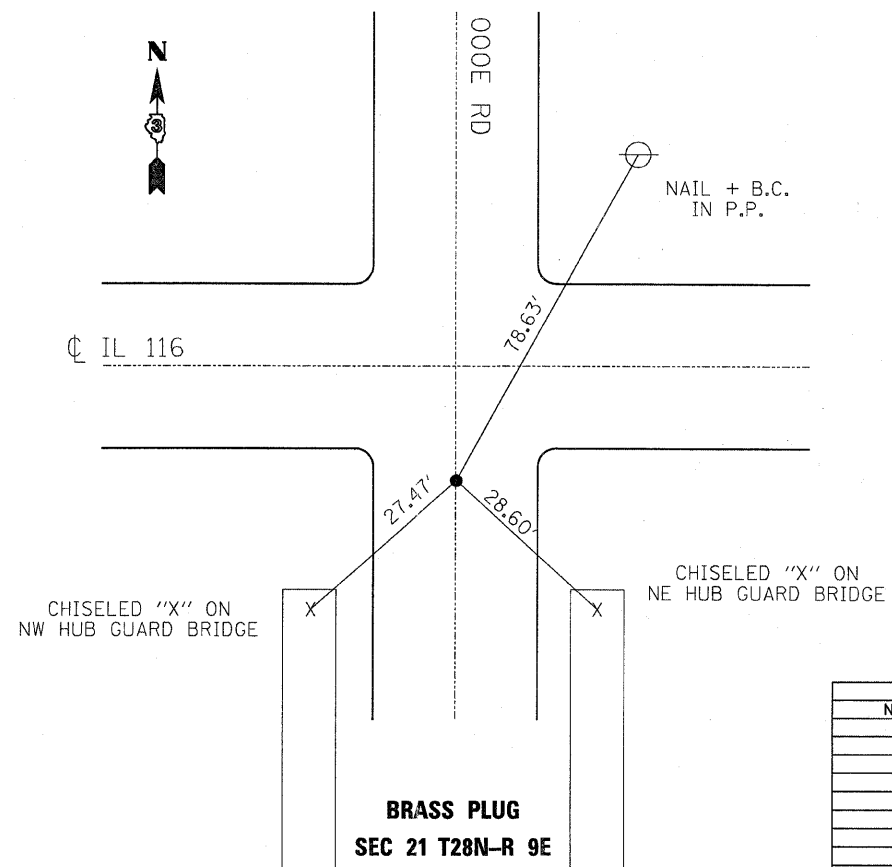
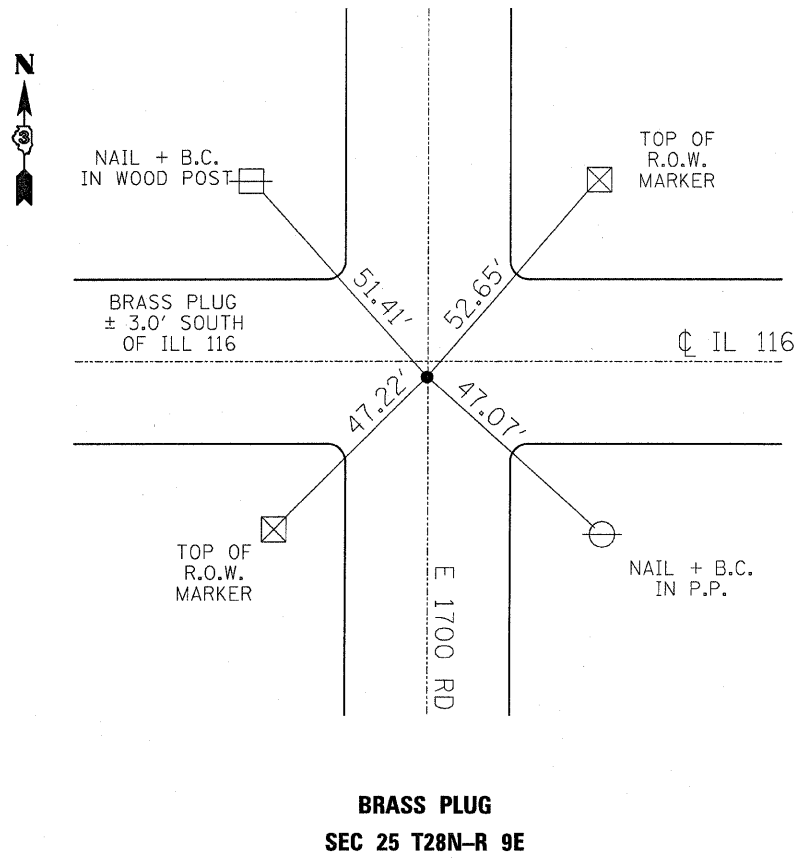
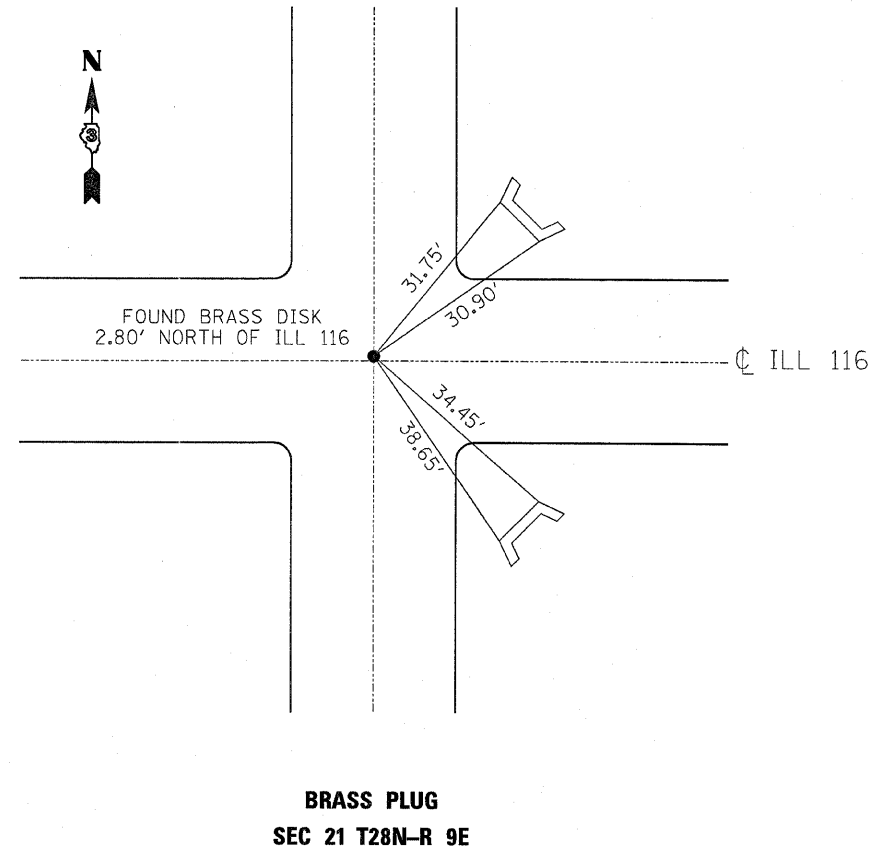
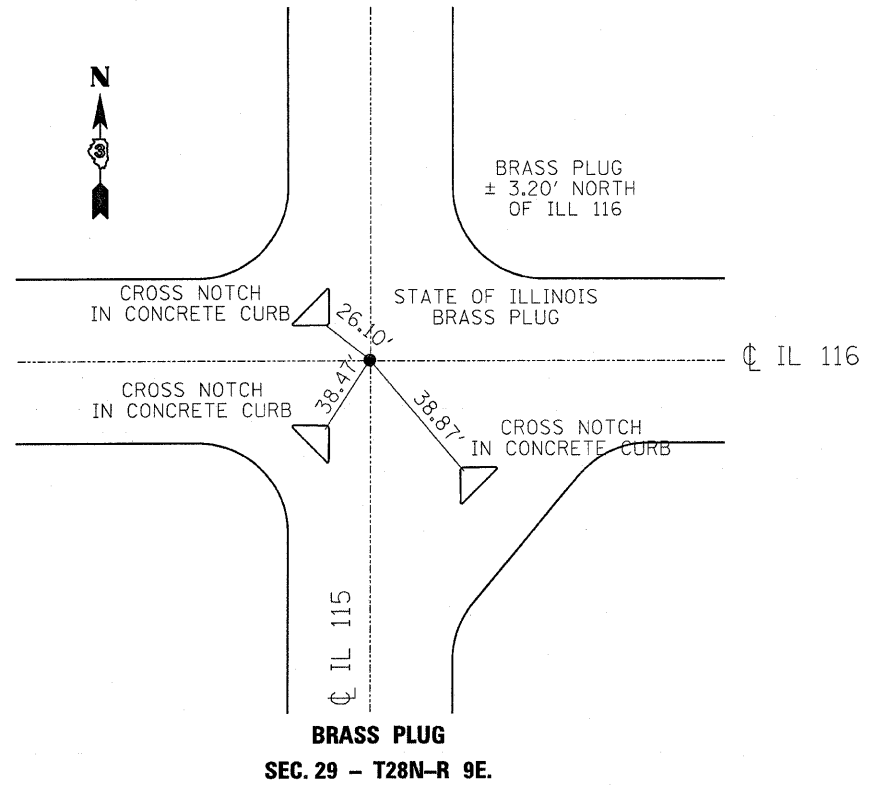
DATE \_\_\_\_\_ DRAWN BY \_\_\_\_\_  
CHECKED BY \_\_\_\_\_

-DAT- 9:16:00 AM  
 c:\pwwork\pwwork\car\pentferd\j\dms82640\dta11s.dgn



F.A.P. RTE.	SECTION	COUNTY	TOTAL SHEETS	SHEET NO.
681	(115RS-3 & 116RS-2)	FORD & LIVINGSTON	12	9
STA. _____		TO STA. _____		
FED. ROAD DIST. NO. _____		ILLINOIS FED. AID PROJECT		

**CONTRACT #66422**



-DAT\_ 9:15:52 AM c:\pw\work\pw\tda\carpenter\dms82640\detail1s.dgn

REVISIONS	
NAME	DATE

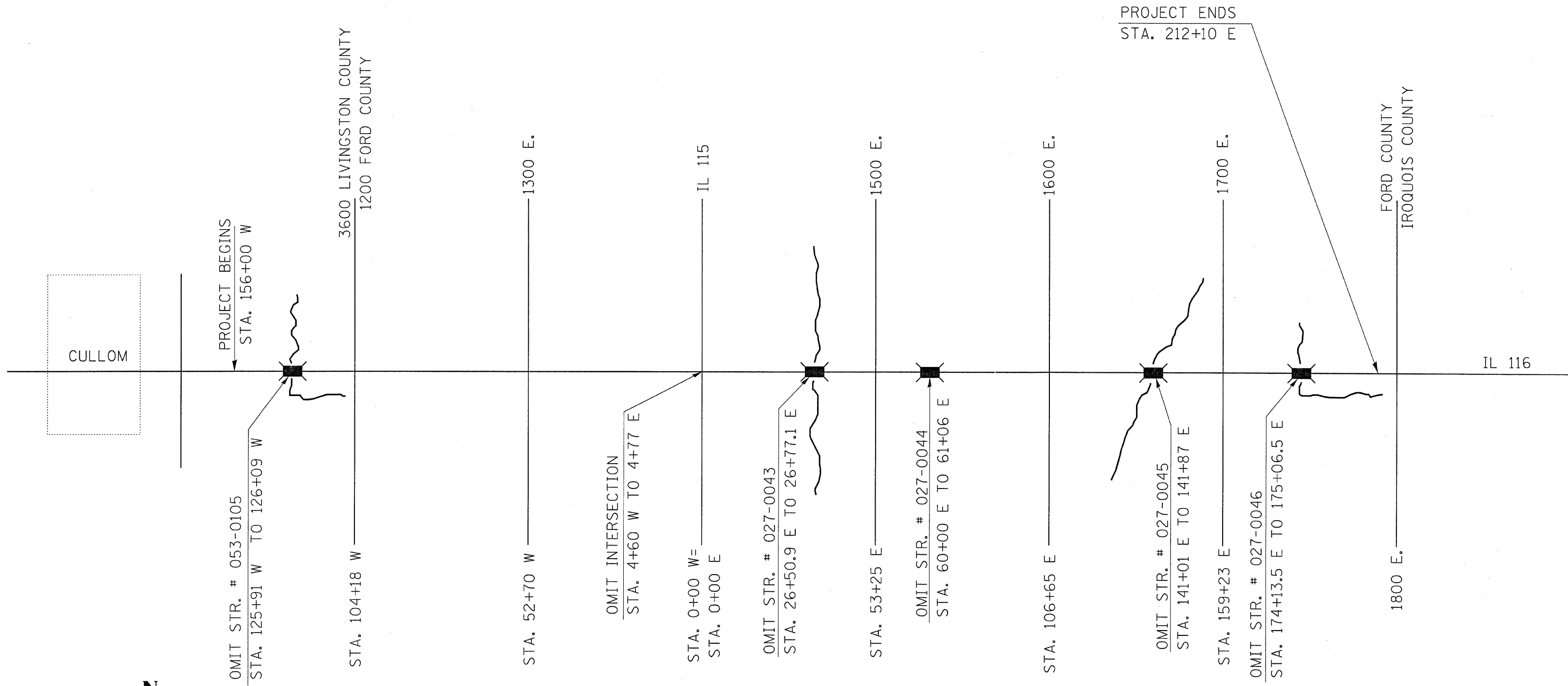
ILLINOIS DEPARTMENT OF TRANSPORTATION

## TIE POINTS

SCALE: VERT. \_\_\_\_\_  
HORIZ. \_\_\_\_\_  
DATE \_\_\_\_\_

DRAWN BY \_\_\_\_\_  
CHECKED BY \_\_\_\_\_

\*DATE-TIME\*  
 c:\pw\work\pw\ldof\carpenter\dms82640\detail.s.dgn



F.A.P. RTE.	SECTION	COUNTY	TOTAL SHEETS	SHEET NO.
681	(115)RS-3 & (116)RS-2	FORD & LIVINGSTON	12	10
STA. _____		TO STA. _____		
FED. ROAD DIST. NO. _____		ILLINOIS FED. AID PROJECT		

**CONTRACT #66422**

REVISIONS	
NAME	DATE

ILLINOIS DEPARTMENT OF TRANSPORTATION

**PROJECT LAYOUT**

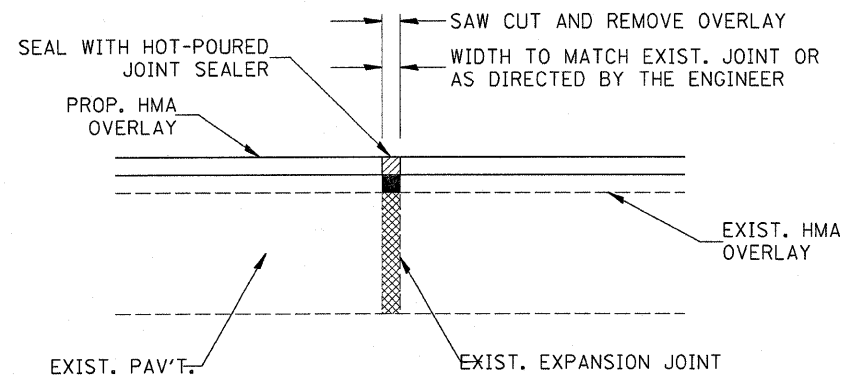
SCALE: VERT. \_\_\_\_\_  
 HORIZ. \_\_\_\_\_

DATE \_\_\_\_\_

DRAWN BY \_\_\_\_\_  
 CHECKED BY \_\_\_\_\_

F.A.P. RTE.	SECTION	COUNTY	TOTAL SHEETS	SHEET NO.
681	(115RS-3 & 116RS-2)	FORD & LIVINGSTON	12	11
STA. _____		TO STA. _____		
FED. ROAD DIST. NO. _____		ILLINOIS FED. AID PROJECT		

CONTRACT #66422

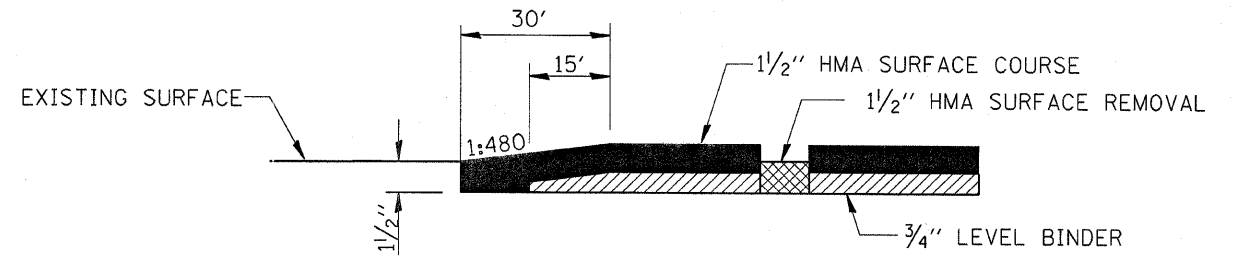


**EXPANSION JOINT REHABILITATION DETAIL**

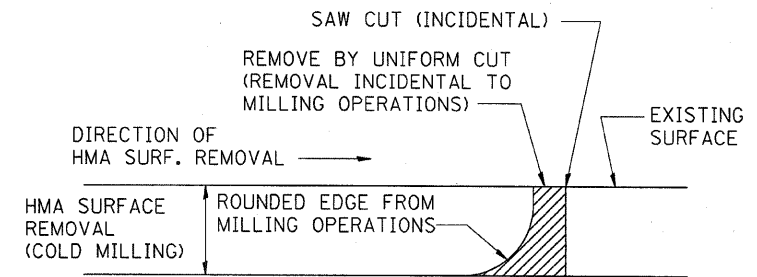
- S.N. 027-0046, STA 175+06.5 & 174+13.5
- S.N. 027-0045, STA 141+87 & 141+01
- S.N. 027-0044, STA 61+06 & 60+00
- S.N. 027-0043, STA 26+77.1 & 26+50.9
- S.N. 053-0105, STA 125+91 & 126+09

**GENERAL NOTES:**

1. THE NEW HMA OVERLAY SHALL BE SAWED, REMOVED, AND THE JOINT AREA CLEANED. PRIOR TO PLACING THE HOT-POURED JOINT SEALER THE JOINT SHALL BE BLOWN OUT WITH COMPRESSED AIR.
2. THIS WORK SHALL BE PAID FOR AT THE CONTRACT UNIT PRICE PER FOOT FOR EXPANSION JOINT REHABILITATION.

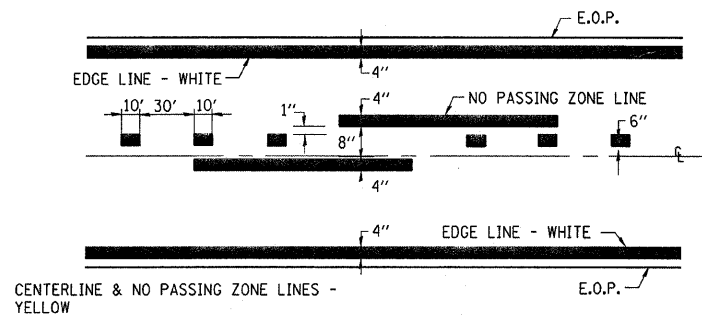


**PROPOSED HMA TAPER**



NOTE: WHEN MILLING OPERATIONS PRODUCE A ROUNDED EDGE, THEN A SAW CUT SHALL BE USED TO MANUFACTURE A PERPENDICULAR EDGE AS SHOWN IN THE DETAIL. THE ENGINEER SHALL BE THE SOLE JUDGE CONCERNING THE USE OF THIS DETAIL

**HMA DETAIL AT BUTT JOINTS**



**PAVEMENT MARKING**

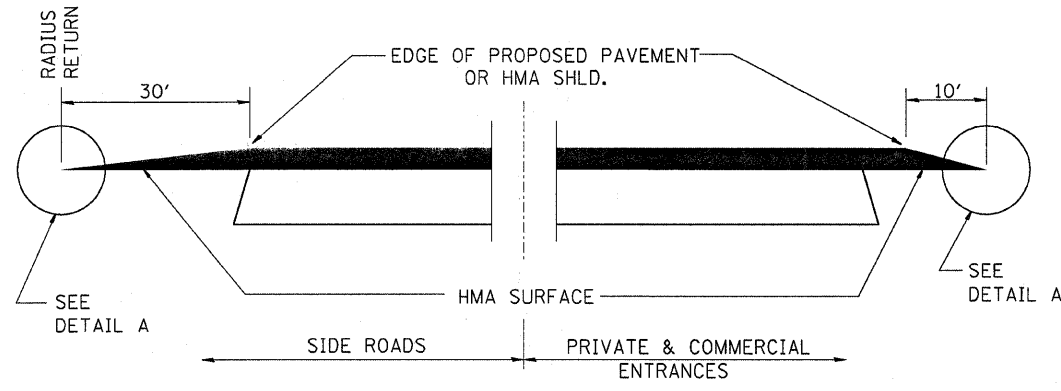
REVISIONS		ILLINOIS DEPARTMENT OF TRANSPORTATION
NAME	DATE	
		<b>DETAILS</b>

SCALE: VERT. \_\_\_\_\_  
HORIZ. \_\_\_\_\_  
DATE \_\_\_\_\_ DRAWN BY \_\_\_\_\_  
CHECKED BY \_\_\_\_\_

DATE-TIME: c:\pw-work\pwwork\corpenfer\dms82640\det011s.dgn

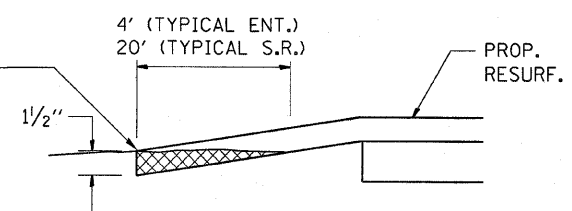
F.A.P. RTE.	SECTION	COUNTY	TOTAL SHEETS	SHEET NO.
681	(115RS-3 & 116RS-2)	FORD & LIVINGSTON	12	12
STA. _____		TO STA. _____		
FED. ROAD DIST. NO. _____		ILLINOIS FED. AID PROJECT		

CONTRACT #66422

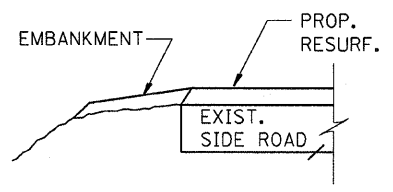


SECTION A-A  
DETAILS AT ENTRANCES & SIDE ROADS

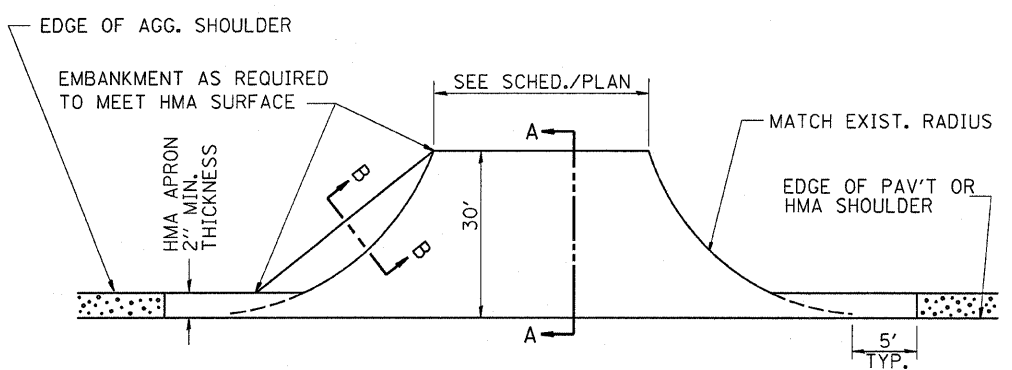
THE COST OF REMOVAL AT EXISTING HMA OR P.C.C. LOCATIONS SHALL BE PAID FOR PER SQ. YD. BY THE APPROPRIATE PAY ITEM. REMOVAL AT EXISTING AGG. LOCATIONS SHALL BE INCIDENTAL TO THE HMA. A-3 LOCATIONS SHALL BE FEATHER TAPERED.



DETAIL A



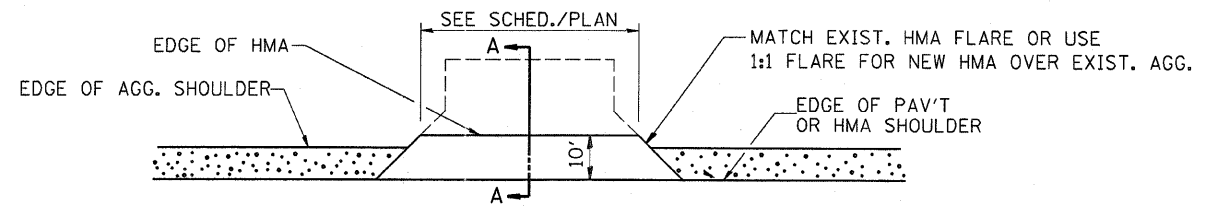
SECTION B-B



AGG. SHOULDER IS NOT TO BE PLACED AROUND SIDE ROAD RADII

PROP. HMA SHLD. SHALL NOT BE CONSTRUCTED THRU HMA SIDEROADS.

PLAN AT SIDE ROADS



PLAN AT PRIVATE & COMMERCIAL ENTRANCES  
(DO NOT RESURFACE FIELD ENTRANCES)

REVISIONS	
NAME	DATE

ILLINOIS DEPARTMENT OF TRANSPORTATION

DETAILS

SCALE: VERT. \_\_\_\_\_  
HORIZ. \_\_\_\_\_  
DATE \_\_\_\_\_

DRAWN BY \_\_\_\_\_  
VERT. CHECKED BY \_\_\_\_\_

\*DATE-TIME\*  
c:\pw\work\pw\ldof\carpent\erd\dms82640\detail1.s.dgn