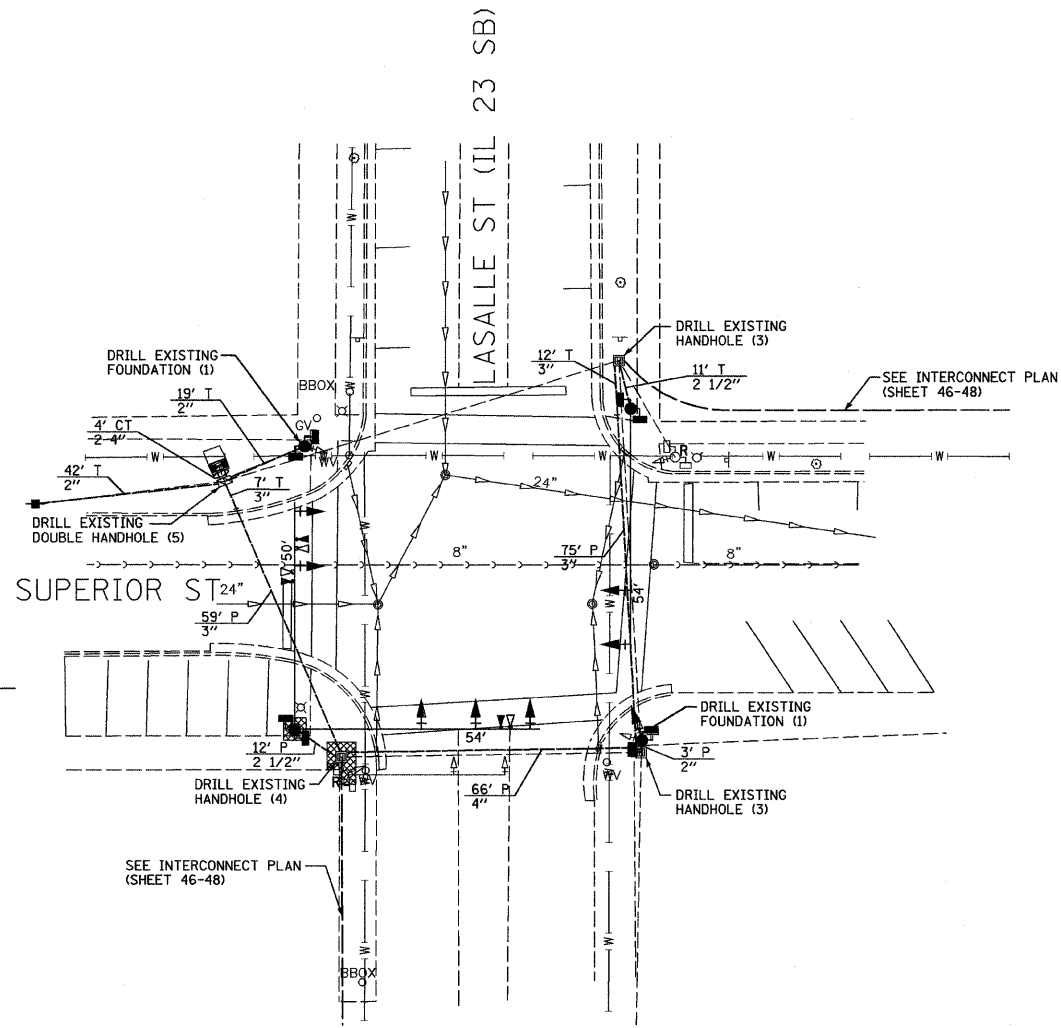
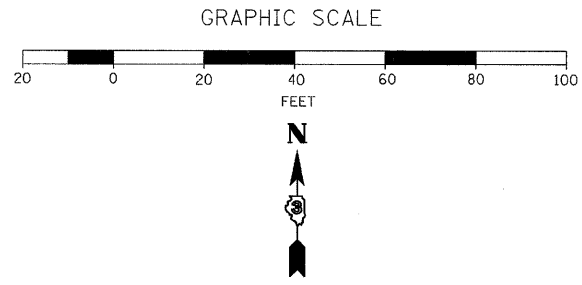


F.A.P. RTE.	SECTION	COUNTY	TOTAL SHEETS	SHEET NO.
*	**	LA SALLE	48	4
STA.		TO STA.		
FED. ROAD DIST. NO. -		ILLINOIS FED. AID PROJECT		
* FAP 68 & 68 ALT (IL 23 NB & SB)				
** (35, 51 & 48 CS, 12)TS				

CONSTRUCTION NOTES:

- REMOVE AND REPLACE CONTROLLER AND CABINET ON EXISTING FOUNDATION.
- INSTALL UNINTERRUPTABLE POWER SUPPLY.
- REMOVE EXISTING MAST ARM AND POLE ON SOUTHWEST CORNER AND REPLACE WITH DUAL MAST ARM AND POLE ON NEW FOUNDATION AS SHOWN.
- REMOVE EXISTING TRAFFIC SIGNAL POST ON NORTHEAST CORNER AND REPLACE WITH MAST ARM AND POLE ON NEW FOUNDATION AS SHOWN.
- REMOVE AND REPLACE TRAFFIC SIGNAL POSTS ON SOUTHEAST AND NORTHWEST CORNERS ON EXISTING FOUNDATIONS AS SHOWN. CONTRACTOR SHALL MEASURE AND PROVIDE BOLT PATTERN DETAILS TO POST SUPPLIER PRIOR TO FABRICATION TO ENSURE COMPATABILITY.
- ADJUST THE HANDHOLE ON THE NORTHEAST CORNER WITH A NEW FRAME AND LID. THE NEW FRAME AND LID SHALL BE RAISED 4 INCHES RELATIVE TO THE EXISTING FRAME ELEVATION.
- EXISTING HANDHOLES SHALL BE UTILIZED AS SHOWN.
- ALL EXISTING SIGNAL CABLE IN CONDUIT SHALL BE REMOVED.
- EXISTING FOUNDATIONS SHALL BE REMOVED AS SHOWN.
- REMOVAL OF THE FOLLOWING ITEMS SHALL BE PAID FOR AS REMOVE EXISTING TRAFFIC SIGNAL EQUIPMENT:
 - 1 EACH - CONTROLLER AND CABINET W/ ALL CONTENTS
 - 3 EACH - TRAFFIC SIGNAL POST
 - 1 EACH - MAST ARM AND POLE
 - 4 EACH - SIGNAL HEAD, 1-FACE, 3-SECTION, BRACKET MOUNTED
 - 2 EACH - SIGNAL HEAD, 1-FACE, 3-SECTION, MAST ARM MOUNTED
 - 8 EACH - PEDESTRIAN SIGNAL HEAD, 1-FACE, BRACKET MOUNTED

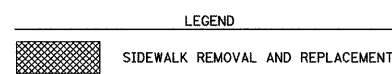


SCHEDULE OF QUANTITIES

ITEM NO.	DESCRIPTION	UNIT	TOTAL QUANTITY
42400100	PORTLAND CEMENT CONCRETE SIDEWALK, 4 INCH	SQ FT	62.6
44000600	SIDEWALK REMOVAL	SQ FT	69.7
50200400	ROCK EXCAVATION FOR STRUCTURES	CU YD	4.1
72000100	SIGN PANEL - TYPE 1	SQ FT	42.5
80500200	SERVICE INSTALLATION, TYPE B	EACH	1
81012600	CONDUIT IN TRENCH, 2" DIA., PVC	FOOT	61
81012700	CONDUIT IN TRENCH, 2 1/2" DIA., PVC	FOOT	11
81012800	CONDUIT IN TRENCH, 3" DIA., PVC	FOOT	19
81013000	CONDUIT IN TRENCH, 4" DIA., PVC	FOOT	8
81021330	CONDUIT PUSHED, 2" DIA., PVC	FOOT	3
81021340	CONDUIT PUSHED, 2 1/2" DIA., PVC	FOOT	12
81021350	CONDUIT PUSHED, 3" DIA., PVC	FOOT	134
81021370	CONDUIT PUSHED, 4" DIA., PVC	FOOT	66
81900200	TRENCH AND BACKFILL FOR ELECTRICAL WORK	FOOT	95
85000200	MAINTENANCE OF EXISTING TRAFFIC SIGNAL INSTALLATION	EACH	1
85700205	FULL-ACTUATED CONTROLLER AND TYPE IV CABINET, SPECIAL	EACH	1
86200300	UNINTERRUPTABLE POWER SUPPLY, EXTENDED	EACH	1
86400100	TRANSCIVER-FIBER OPTIC	EACH	1
87301225	ELECTRIC CABLE IN CONDUIT, SIGNAL NO. 14 3C	FOOT	1290
87301245	ELECTRIC CABLE IN CONDUIT, SIGNAL NO. 14 5C	FOOT	1747.5
87301805	ELECTRIC CABLE IN CONDUIT, SERVICE, NO. 6 2C	FOOT	65
87502270	TRAFFIC SIGNAL POST, PAINTED STEEL 12 FT.	EACH	1
87502310	TRAFFIC SIGNAL POST, PAINTED STEEL 16 FT.	EACH	1
87700310	STEEL MAST ARM AND ASSEMBLY AND POLE, 54 FT.	EACH	1
87800415	CONCRETE FOUNDATION, TYPE E, 36 INCH DIAMETER	FOOT	27
87900100	DRILL EXISTING FOUNDATION	EACH	2
87900200	DRILL EXISTING HANDHOLE	EACH	15
88040070	SIGNAL HEAD, POLYCARBONATE, LED, 1-FACE, 3-SECTION, BRACKET MOUNTED	EACH	1
88040090	SIGNAL HEAD, POLYCARBONATE, LED, 1-FACE, 3-SECTION, MAST ARM MOUNTED	EACH	7
88200410	TRAFFIC SIGNAL BACKPLATE, LOUVERED, FORMED PLASTIC	EACH	8
88700200	LIGHT DETECTOR	EACH	3
88700300	LIGHT DETECTOR AMPLIFIER	EACH	1
89502300	REMOVE ELECTRIC CABLE FROM CONDUIT	FOOT	2939
89502375	REMOVE EXISTING TRAFFIC SIGNAL EQUIPMENT	EACH	1
89502385	REMOVE EXISTING CONCRETE FOUNDATION	EACH	2
X8730027	ELECTRIC CABLE IN CONDUIT, GROUNDING, NO. 6 1C	FOOT	360.5
X8730250	ELECTRIC CABLE IN CONDUIT, COMMUNICATION, NO. 20 3/C, TWISTED, SHIELDED	FOOT	521.5
XX002852	RE-OPTIMIZE TRAFFIC SIGNAL SYSTEM	EACH	1
XX006533	PEDESTRIAN SIGNAL HEAD, POLYCARBONATE, LED, 1-FACE, BRACKET MOUNTED, COUNTDOWN TIMER	EACH	8
XX006668	HANDHOLE TO BE ADJUSTED WITH NEW FRAME AND COVER	EACH	1
*3002045	STEEL MAST ARM AND ASSEMBLY AND POLE WITH DUAL MAST ARMS, 50 FT. AND 54 FT.	EACH	1

TRAFFIC SIGNALS LEGEND

EXISTING	PROPOSED	DESCRIPTION
		CONTROLLER CABINET
		SERVICE INSTALLATION
		CONDUIT
		SIGNAL HEAD WITH BACKPLATE
		STEEL MAST ARM
		TRAFFIC SIGNAL POST
		HANDHOLE
		DOUBLE HANDHOLE
		PEDESTRIAN SIGNAL HEAD
		LIGHT DETECTOR
		CONFIRMATION BEACON



REVISIONS

NAME	DATE

ILLINOIS DEPARTMENT OF TRANSPORTATION
 TRAFFIC SIGNAL PLAN
 FAP 68 ALT (IL 23 SB)/LA SALLE ST
 AND SUPERIOR STREET
 SECTION 35,51 & 48 CS, 12)TS
 LA SALLE COUNTY

SCALE: VERT. 1" = 20'
 HORIZ. 1" = 20'
 DATE 11/08

DRAWN BY ARR
 CHECKED BY JLS

PLOT DATE = 11/08
 FILE NAME = D366769-SHT-TS-LASA-SUPLEDON
 PLOT SCALE = 1" = 20'
 USER NAME = ARR