

F.A. RTE.	SECTION	COUNTY	TOTAL SHEETS	SHEET NO.
•	••	LA SALLE	48	27

STA. _____ TO STA. _____

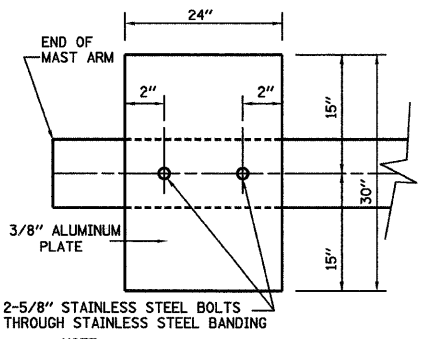
FED. ROAD DIST. NO. _____ ILLINOIS FED. AID PROJECT

- FAP 68 & 68 ALT (IL 23 NB & SB)
- (35, 51 & 48 CS, 12)TS

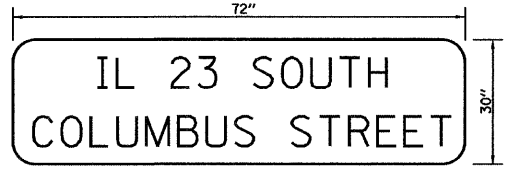
STREET NAME	COMPONENT	NUMBER	WATTAGE EACH	BURNTIME %
COLUMBUS STREET (IL 23 NB)	RED	4	10	42
	YELLOW	4	19	5
	GREEN	4	14	53
		4	7	100
		4	5	53
MAIN STREET	RED	5	10	68
	YELLOW	5	19	5
	GREEN	5	14	27
	LT. YELLOW ARROW	2	9	21
	LT. GREEN ARROW	2	3.4	5
		4	7	100
		4	5	22
TRAFFIC SIGNAL CABINET	CONTROLLER	1	6	100
	UPS	1	50	100
	EMERGENCY VEHICLE PREEMPT	3	--	--

AGENCY RESPONSIBLE FOR TRAFFIC SIGNAL ENERGY CHARGES:
CITY OF OTTAWA

NOTE:
DAMPENING DEVICE SHALL CONSIST OF A 24" X 30" TYPE 1, UNPAINTED ALUMINUM SIGN STOCK MOUNTED HORIZONTALLY ON TOP OF MAST ARM WITH THE 30" LENGTH PERPENDICULAR TO THE ARM. COST OF THE DAMPENING DEVICE IS INCLUDED IN THE MAST ARM PAY ITEM.

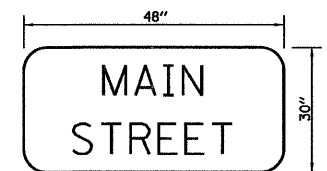


DAMPENING PLATE DETAIL - TOP VIEW



TYPE ZZ SHEETING REQUIRED
8" D SERIES LETTERS (STATE ROUTE LETTERING)
6" D SERIES LETTERS (CITY STREET LETTERING)
2 SIGNS REQUIRED = 15 SQ. FT. EACH
= 30 SQ. FT. TOTAL

THIS STREET NAME SIGN SHALL BE PLACED ON THE MAST ARMS PARALLEL WITH COLUMBUS STREET



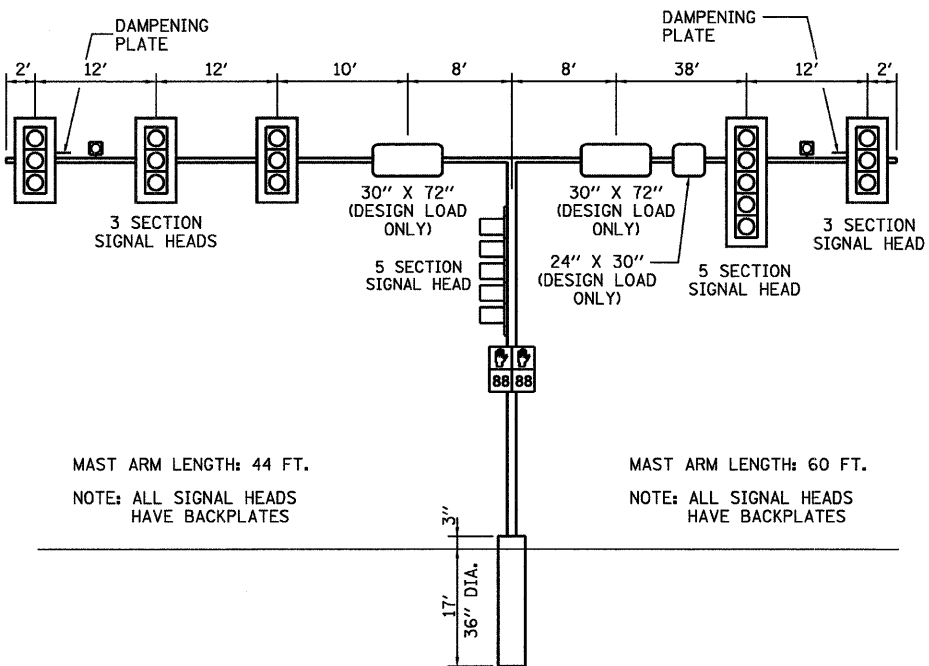
TYPE ZZ SHEETING REQUIRED
8" D SERIES LETTERS
1 SIGNS REQUIRED = 10 SQ. FT. EACH
= 10 SQ. FT. TOTAL

THIS STREET NAME SIGN SHALL BE PLACED ON THE MAST ARM SUPPORT POST PARALLEL WITH MAIN STREET

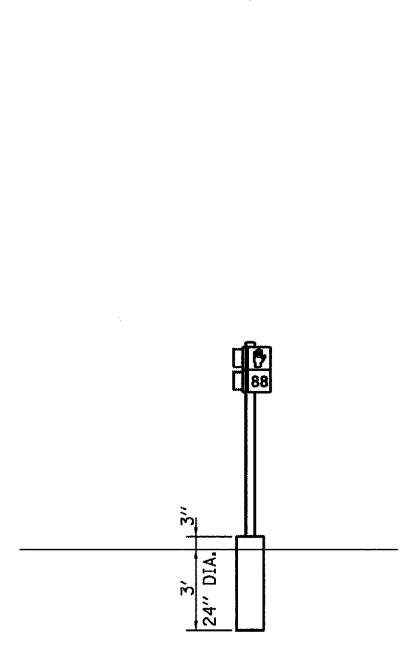


R10 - 12
24" X 30"

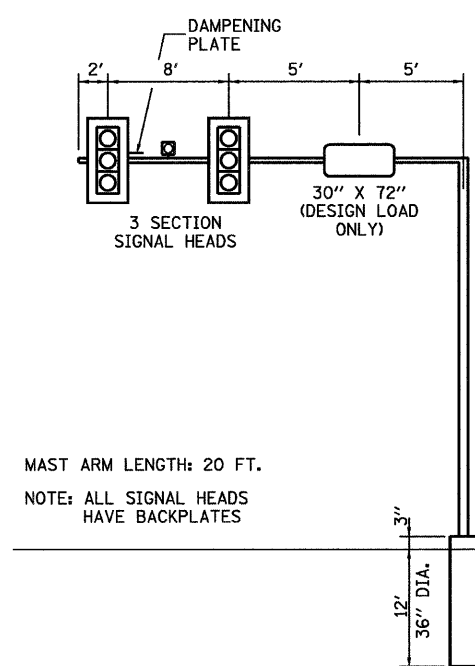
TYPE A SHEETING REQUIRED
1 SIGN REQUIRED = 5 SQ.FT. EACH
= 5 SQ.FT. TOTAL
THIS SIGN SHALL BE LOCATED 6" TO 12" TO THE RIGHT OF THE 5 SECTION SIGN TRUSS MOUNTED LEFT TURN SIGNAL (ANY ADDITIONAL HARDWARE REQUIRED FOR THIS INSTALLATION SHALL BE INCLUDED WITH COST OF SIGN).



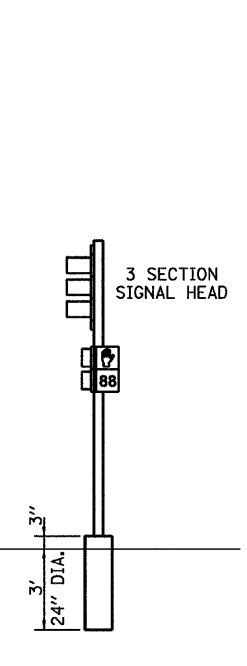
NORTHBOUND EASTBOUND



EASTBOUND



WESTBOUND



WESTBOUND

NORTHEAST CORNER
NOT TO SCALE

SOUTHEAST CORNER
NOT TO SCALE

NORTHWEST CORNER
NOT TO SCALE

SOUTHWEST CORNER
NOT TO SCALE

COLUMBUS STREET (IL 23 NB) / MAIN STREET

MAST ARM AND POLE SHALL BE DESIGNED FOR THE WORST CASE LOADING CONDITION WHEREBY ALL THE SIGNAL HEADS ARE LOCATED 2 FEET FURTHER OUT THAN POSITION SHOWN. HOWEVER THE INTENT IS THAT ALL SIGNAL HEADS BE CENTERED ABOVE THE LANES.

REVISIONS	
NAME	DATE

ILLINOIS DEPARTMENT OF TRANSPORTATION
TRAFFIC SIGNAL DETAILS
FAP 68 (IL 23 NB)/COLUMBUS ST
AND MAIN STREET
SECTION 35,51 & 48 CS, 12)TS
LA SALLE COUNTY

SCALE: VERT. _____
HORIZ. _____
DATE 11/08
DRAWN BY ARR
CHECKED BY JLS

PLOT DATE = 11/08
FILE NAME = D666769-SHT-DETAILS-COLU-MAIN.dwg
PLOT SCALE = 1" = 20'
USER NAME = ARR