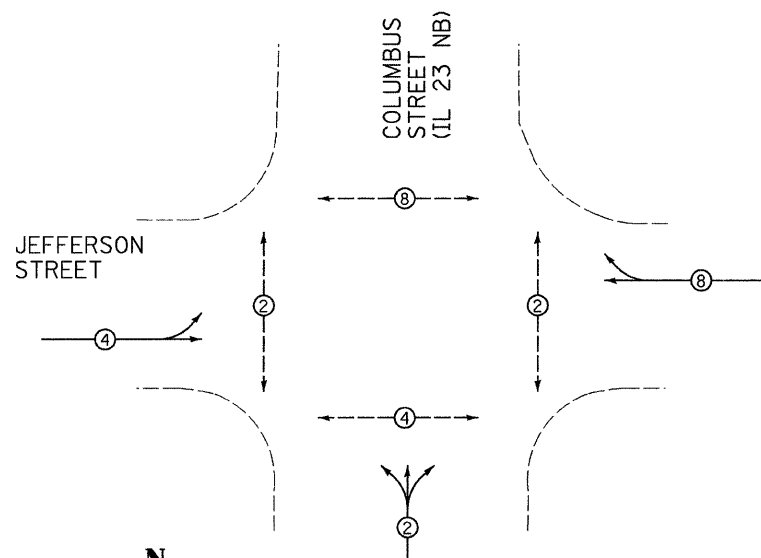


F.A.P. RTE.	SECTION	COUNTY	TOTAL SHEETS	SHEET NO.
*	**	LA SALLE	48	32
STA.		TO STA.		
FED. ROAD DIST. NO. 1 ILLINOIS FED. AID PROJECT				
* FAP 68 & 68 ALT (IL 23 NB & SB)				
** (35, 51 & 48 CS, 12)TS				

CONTROLLER SEQUENCE

NAME OF INTERSECTION: COLUMBUS STREET AND JEFFERSON STREET
 CONTROLLER SPECIFIED: FULL-ACTUATED CONTROLLER, STANDARD SEQUENCE II, 8 PHASE, IN TYPE IV CABINET
 REFERRING TO STANDARD 857001, THE VEHICULAR AND PEDESTRIAN PHASES USED ARE DESIGNATED.



PROPOSED PLAN
NOT TO SCALE

LEGEND

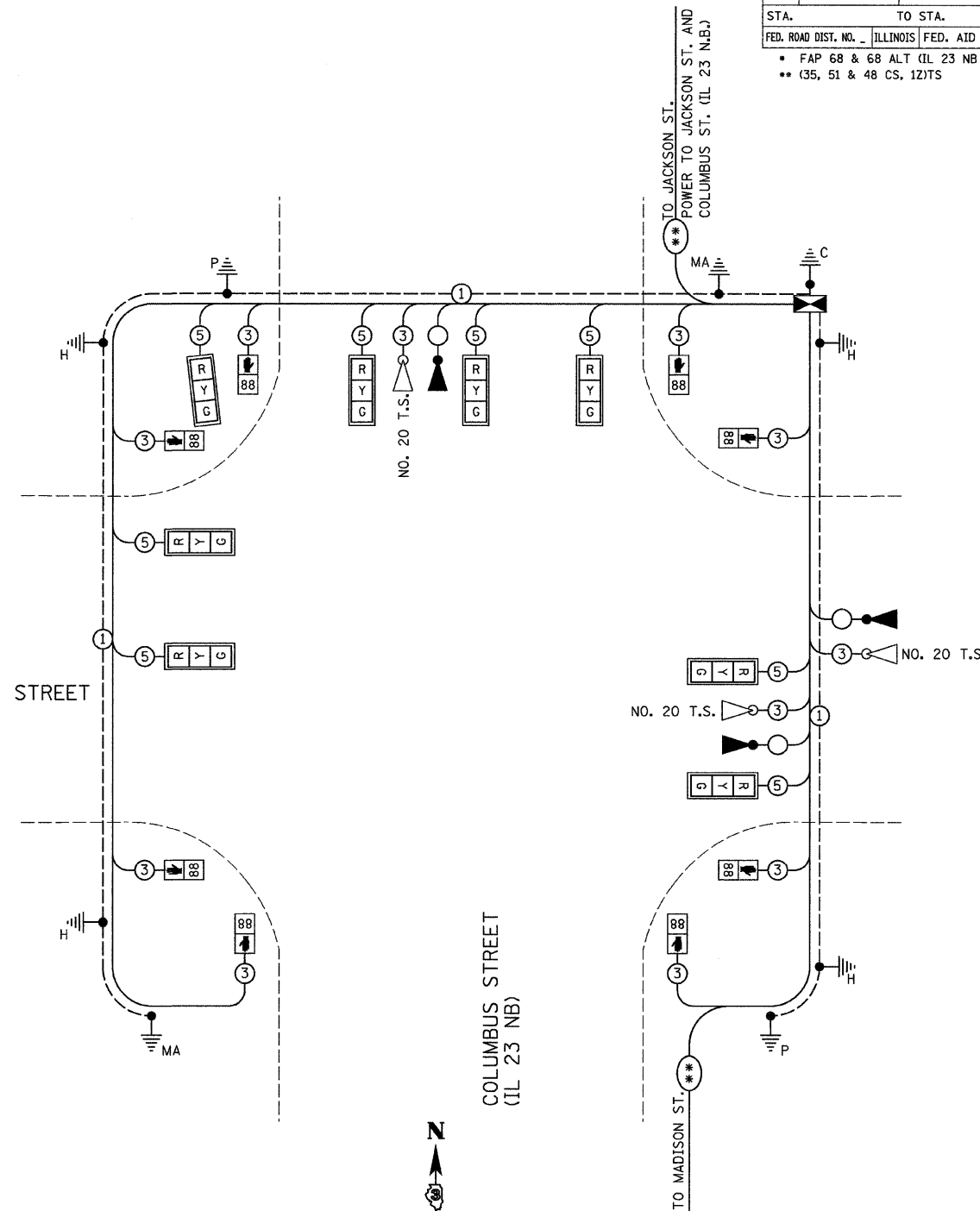
- VEHICULAR MOVEMENT
- - -●- - - PEDESTRIAN MOVEMENT
- * NUMBER REFERS TO ASSOCIATED PHASE

TRAFFIC SIGNALS LEGEND

⊙	DETOTES NUMBER OF CONDUCTORS (NEW) ALL CABLE NO. 14 EXCEPT AS INDICATED
■	PROPOSED SERVICE INSTALLATION, TYPE B
⚡	PROPOSED CONTROLLER AND CABINET
⚡	EMERGENCY VEHICLE LIGHT DETECTOR
⚡	EMERGENCY VEHICLE CONFIRMATION BEACON
□	SIGNAL SECTION 12"
⊙*	PROPOSED INTERCONNECT CABLE
Ⓜ	PROPOSED WALK/DONT WALK COUNTDOWN SECTION
Ⓜ	TRAFFIC SIGNAL BACKPLATE
—①—	GROUND CABLE IN CONDUIT, NO. 6 SOLID COPPER (GREEN)
Ⓜ	GROUND ROD AT POST (P) OR MAST ARM (MA) OR CONTROLLER (C) OR SERVICE INSTALLATION (S) OR HANDHOLE (H)

JEFFERSON STREET

COLUMBUS STREET
(IL 23 NB)



PROPOSED CABLE PLAN
NOT TO SCALE

REVISIONS	
NAME	DATE

ILLINOIS DEPARTMENT OF TRANSPORTATION
CABLE PLAN
 FAP 68 (IL 23 NB)/COLUMBUS ST
 AND JEFFERSON STREET
 SECTION 35,51 & 48 CS, 12)TS
 LA SALLE COUNTY

SCALE: VERT.
HORIZ.
DATE 11/08

DRAWN BY ARR
CHECKED BY JLS