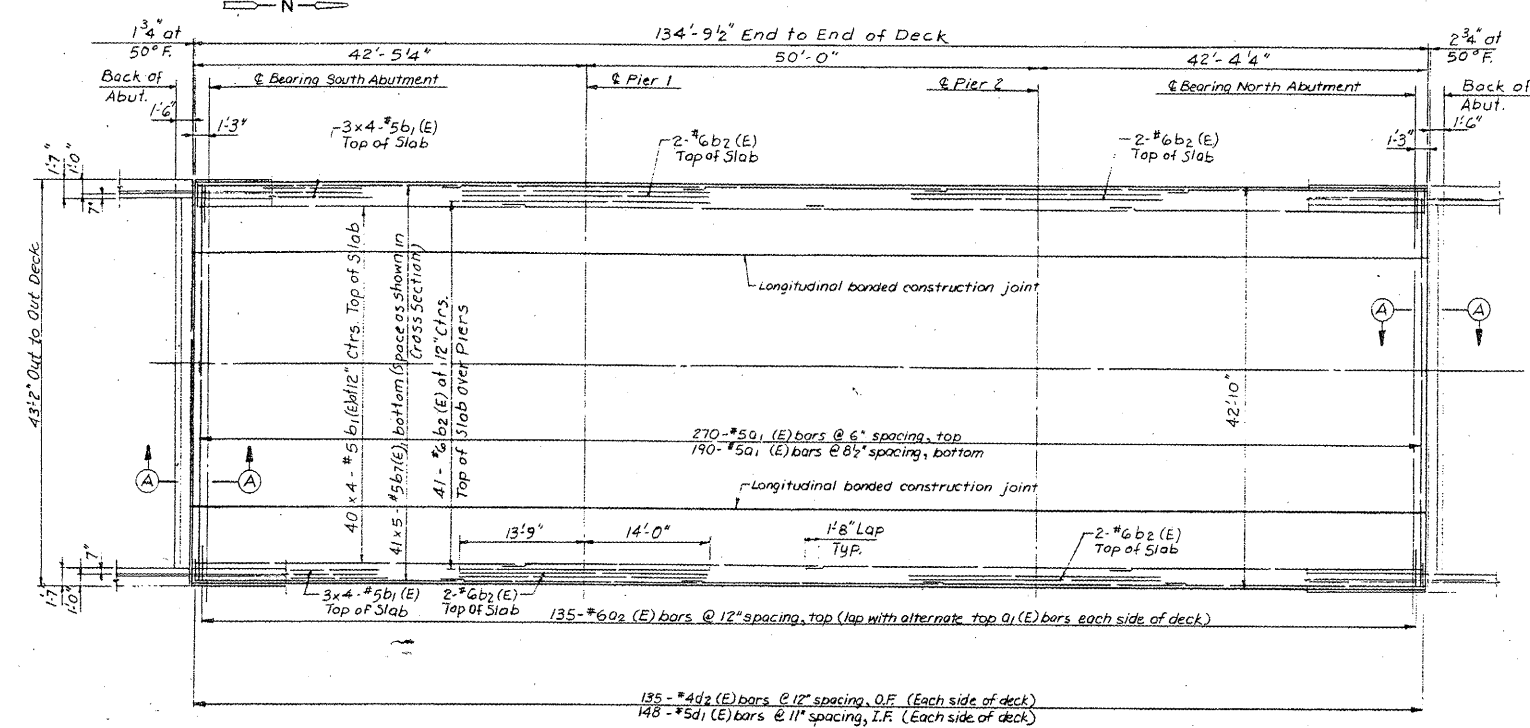


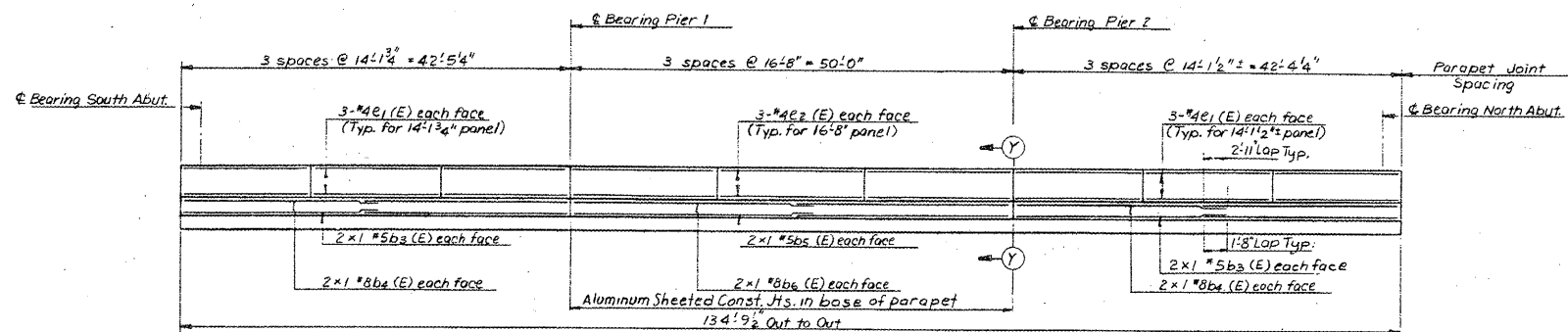
STATE OF ILLINOIS  
DEPARTMENT OF TRANSPORTATION

F.A.P. ROUTE NO.	SECTION NO.	COUNTY	TOTAL SHEETS	SHEET NO.
412	50-1VB	LASALLE		31
FED. ROAD DIST. NO. 7	ILLINOIS			

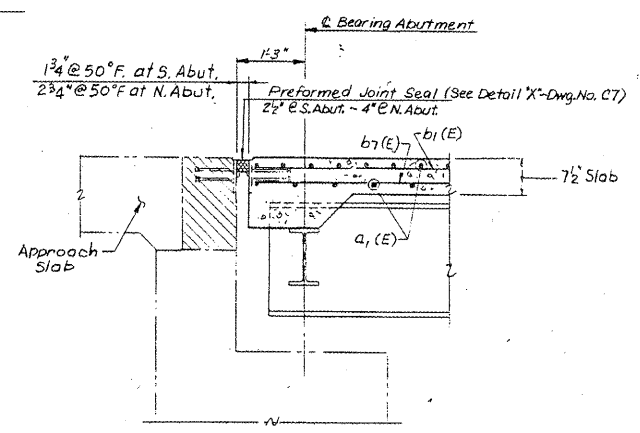
Dwg. C4 of C15



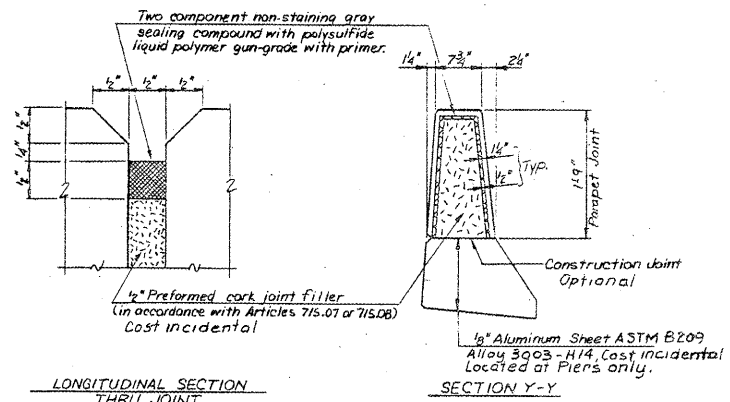
DECK PLAN  
(Northbound-As Shown  
Southbound-Similar)



EAST PARAPET ELEVATION LOOKING WEST



SECTION A-A



LONGITUDINAL SECTION THRU JOINT

SECTION Y-Y

PARAPET JOINT DETAILS

For General Notes see Dwg. No. C1

DECK PLAN, PARAPET ELEVATION & DETAILS

F.A.P. ROUTE 412 OVER CONRAIL RAILROAD  
F.A.P. 412-SECTION 50-1VB  
LASALLE COUNTY  
STA. 565+86.08

STRUCTURE NUMBERS 050-0210(SB) & 050-0211(NB)

NO.	REVISION DESCRIPTION	BY	DATE
2			
1			

Designed by: W/S  
Drawn by: JEF  
Checked by: SSK  
Date: June 26, 1987

HDR Infrastructure, Inc.  
A Centerra Company

Drawing No. C4

**FOR INFORMATION ONLY**

FILE NAME =	USER NAME = woodshank-1	DESIGNED - RON WOODSHANK	REVISED -
ca:\pwwork\pwwid\WOODSHANKRL\dms51013	0368878 - 0500210 & 0211-details.dgn	DRAWN - RON WOODSHANK	REVISED -
	PLOT SCALE = 50,0000' / IN.	CHECKED -	REVISED -
	PLOT DATE = Dec 09, 2008 - 08:07:35 AM	DATE -	REVISED -

STATE OF ILLINOIS  
DEPARTMENT OF TRANSPORTATION

EXISTING STRUCTURE PLANS

SCALE: SHEET NO. 2 OF 5 SHEETS STA. 565+17.75 TO STA. 566+55.92

F.A.P. RTE.	SECTION	COUNTY	TOTAL SHEETS	SHEET NO.
39	(50-1VB)BP	LASALLE	11	8
FED. ROAD DIST. NO.	ILLINOIS			
CONTRACT NO. 66878				