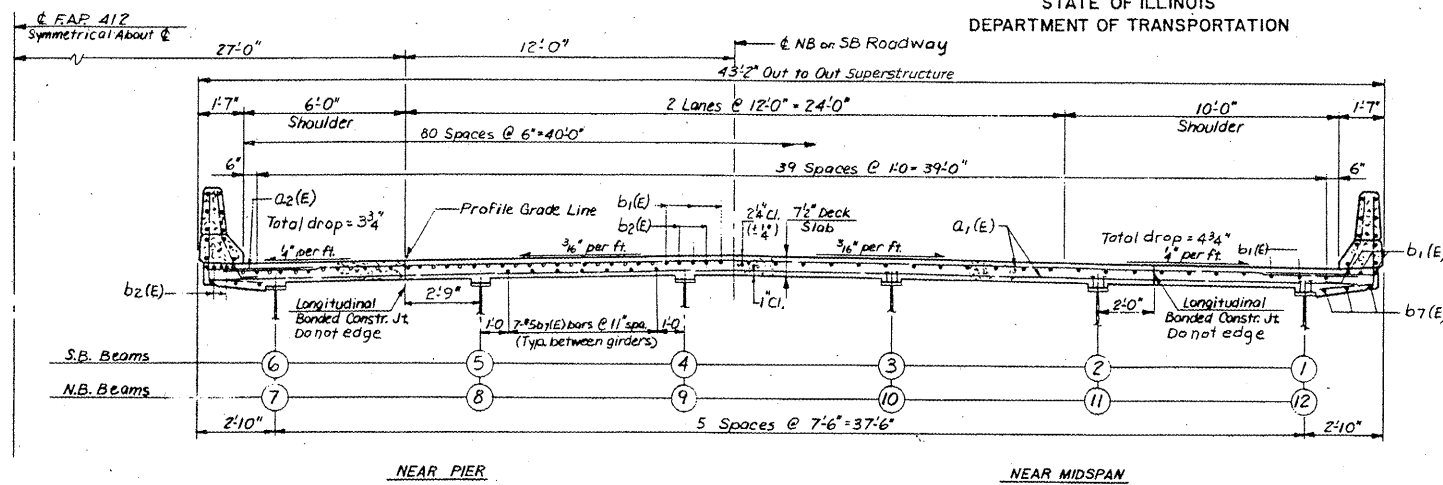
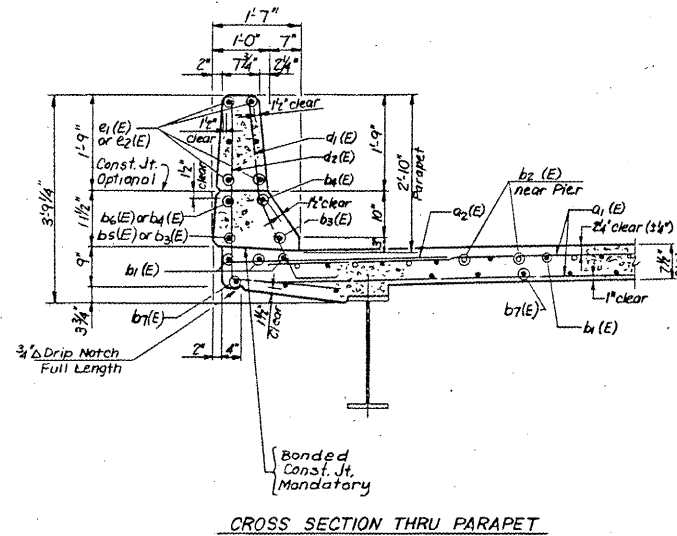


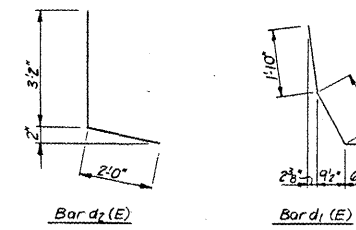
STATE OF ILLINOIS
DEPARTMENT OF TRANSPORTATION



DECK CROSS SECTION
(Looking North, NBL)
(Looking South, SBL)



CROSS SECTION THRU PARAPET



BAR BENDING DIAGRAMS

TOP OF BEAM ELEVATIONS						
BEAM	SOUTH ABUTMENT	PIER 1	FIELD SPLICE	FIELD SPLICE	PIER 2	NORTH ABUTMENT
1/12	703.448	703.394	703.390	703.370	703.365	703.368
2/11	703.608	703.555	703.551	703.531	703.525	703.529
3/10	703.732	703.678	703.674	703.654	703.648	703.652
4/9	703.794	703.741	703.737	703.717	703.711	703.715
5/8	703.877	703.824	703.820	703.800	703.594	703.598
6/7	703.931	703.478	703.474	703.454	703.448	703.452

FAP ROUTE NO.	SECTION NO.	COUNTY	TOTAL SHEETS	SHEET NO.
412	50 - 1VB	LASALLE		32A
FED. ROAD DIST. NO. 7 ILLINOIS				

BILL OF MATERIAL FOR TWO SUPERSTRUCTURES

Bar	No.	Size	Length	Shape
a1(E)	920	#5	41'-3"	
a2(E)	540	#6	4'-0"	
b1(E)	368	#5	35'-0"	
b2(E)	180	#6	27'-9"	
b3(E)	32	#5	22'-0"	
b4(E)	32	#8	22'-7"	
b5(E)	16	#5	25'-4"	
b6(E)	16	#8	26'-4"	
b7(E)	410	#5	28'-4"	
d1(E)	592	#5	3'-11"	
d2(E)	540	#4	5'-2"	
e1(E)	144	#4	13'-9"	
e2(E)	72	#4	16'-4"	
Item Unit Quantity				
Class X Conc. Superstr. Cu. Yds. 352				
Reinforcing Bars (Epoxy Coated) Pounds 86,500				

For General Notes See Dwg. No. C1
For Framing Plan See Dwg. No. C6

DECK CROSS SECTION

F.A.P. ROUTE 412 OVER CONRAIL RAILROAD
F.A.P. 412-SECTION 50-1VB
LASALLE COUNTY
STA. 565+86.08
STRUCTURE NUMBERS 050-0210(SB) & 050-0211(NB)

Designed by	PJS	 HDR Infrastructure, Inc. A Centerra Company	Drawing No. C5
Drawn by	JBT		
Checked by	SMK		

Date: June 26, 1987

AS REVISED

FOR INFORMATION ONLY

NO.	REVISION DESCRIPTION	BY	DATE
2			
1			

FILE NAME =	USER NAME = woodshankr1	DESIGNED - RON WOODSHANK	REVISED -
01\pw\work\PIWIDOT\WOODSHANKRL\dms51013	4366878 - 0500210 & 0211-details.dgn	DRAWN - RON WOODSHANK	REVISED -
	PLOT SCALE = 50.0000' / IN.	CHECKED -	REVISED -
	PLOT DATE = Dec 09, 2008 - 08:07:58 AM	DATE -	REVISED -

STATE OF ILLINOIS
DEPARTMENT OF TRANSPORTATION

EXISTING STRUCTURE PLANS

SCALE: SHEET NO. 3 OF 5 SHEETS STA. 565+17.75 TO STA. 566+55.92

F.A.I. RTE.	SECTION	COUNTY	TOTAL SHEETS	SHEET NO.
39	(50-1VB)BP	LASALLE	11	9
CONTRACT NO. 66878				
FED. ROAD DIST. NO. ILLINOIS				