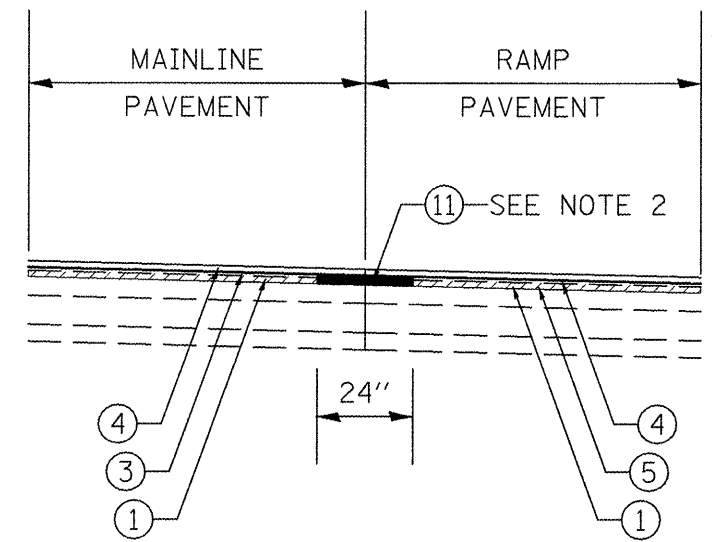


- LEGEND - EXISTING**
- (A) PCC PAVEMENT (7" EB, 10" WB & RAMPS)
 - (B) 4 1/2" - 5" BIT. OVERLAY
 - (C) SUB-BASE GRAN. MAT., TYPE A
 - (D) BITUMINOUS SHOULDER
 - (E) COMB. CONC. CURB & GUTTER TYPE B-9.06
 - (F) PIPE UNDERDRAIN
 - (G) STEEL PLATE BEAM GUARDRAIL
 - (H) BITUMINOUS PAVEMENT



- LOCATIONS**
- EB - RT. STA. 618+72 TO 626+73
 - EB - RT. STA. 643+51 TO 651+43
 - WB - RT. STA. 615+29 TO 623+28
 - WB - RT. STA. 632+91 TO 638+55

- LEGEND - PROPOSED**
- (1) HMA SURFACE REMOVAL, 1-1/2"
 - (2) SHOULDER REMOVAL, 8"
 - (3) HMA BINDER CSE., 2-1/4"
 - (4) HMA SURFACE CSE., 1-1/2"
 - (5) HMA LEVELING BINDER, 3/4"
 - (6) HMA SHOULDER, 3-3/4"
 - (7) AGGREGATE SHOULDER, TYPE B
 - (8) EPOXY PAVEMENT MARKING
 - (9) PREFORMED PLASTIC PAVEMENT MARKING, TYPE B
 - (10) SHOULDER RUMBLE STRIP
 - (11) STRIP REFLECTIVE CRACK CONTROL TREATMENT SYSTEM A

*** NOTE 1: HMA SURFACE REMOVAL - VAR. DEPTH TO BE INCLUDED AND PAID FOR AS PART OF HMA SURFACE REMOVAL, 1 1/2".

NOTE 2: STRIP REFLECTIVE CRACK CONTROL TREATMENT SYSTEM A SHALL BE PLACE BEFORE PLACING THE LEVELING BINDER AND BINDER COURSES. SEE RAMP CONFIGURATION SHEETS FOR MORE DETAILS ABOUT LOCATIONS.