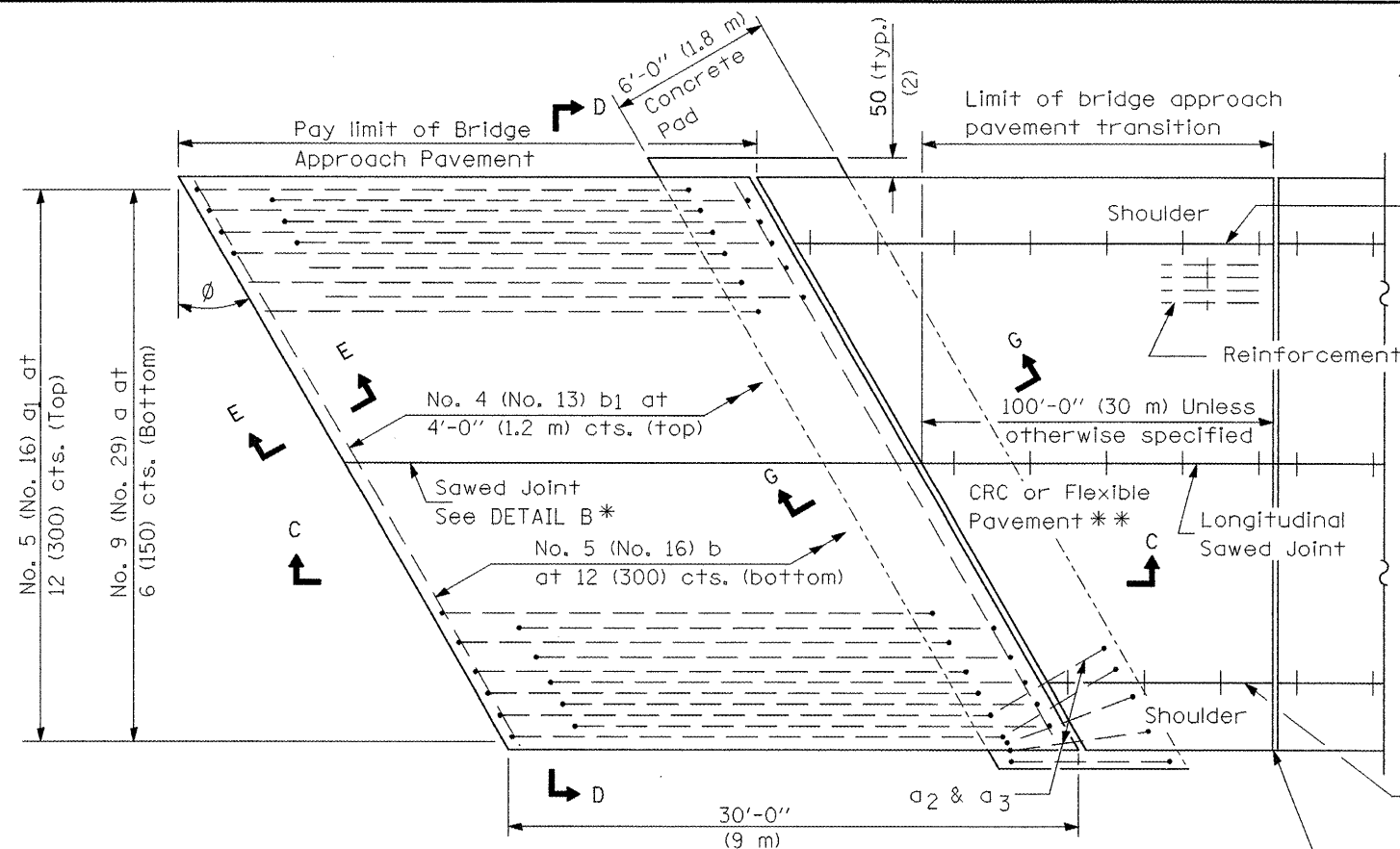
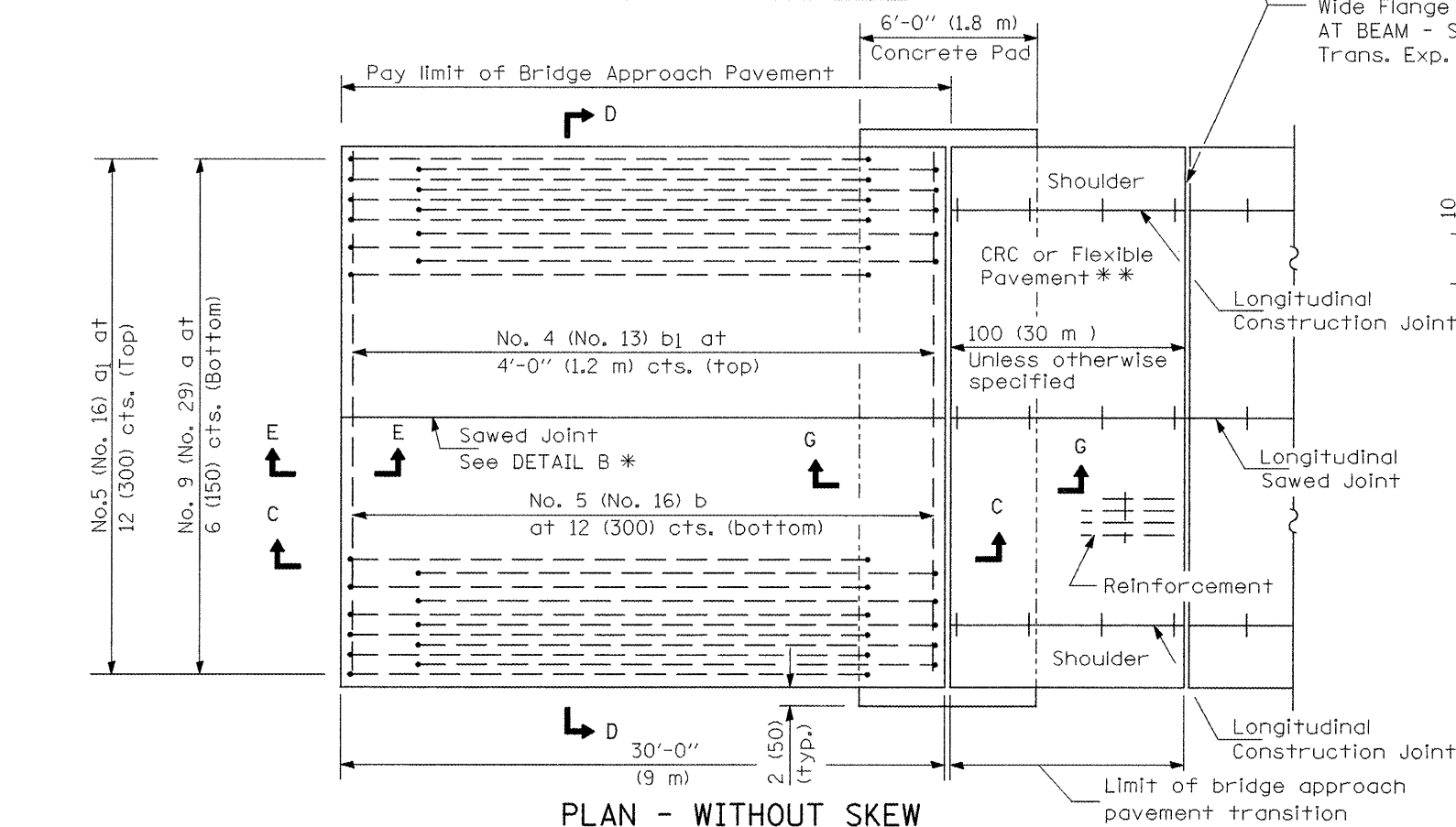


NEW CONSTRUCTION



PLAN - WITH SKEW



PLAN - WITHOUT SKEW

* Saw \perp or lane edge if poured two or more lane widths at a time.
 ** Omit Reinforcement, tie bars and Long. sawed Jt. for Flexible Pavement.

Limit of bridge approach pavement transition

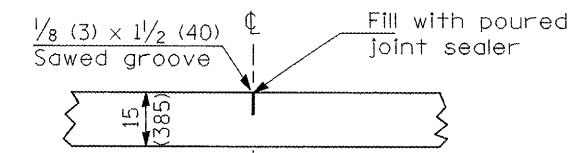
Shoulder

Reinforcement

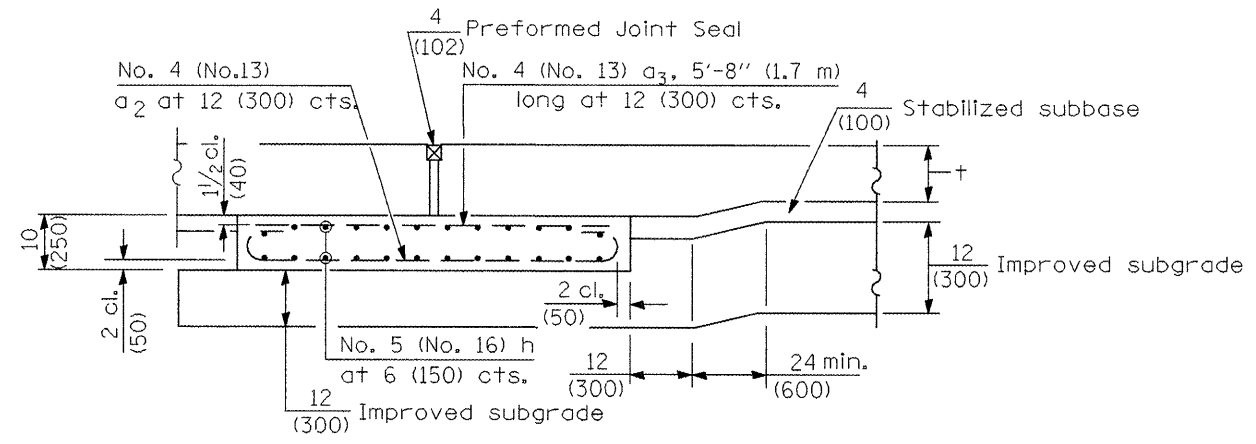
Longitudinal Construction Joint

Longitudinal Construction Joint

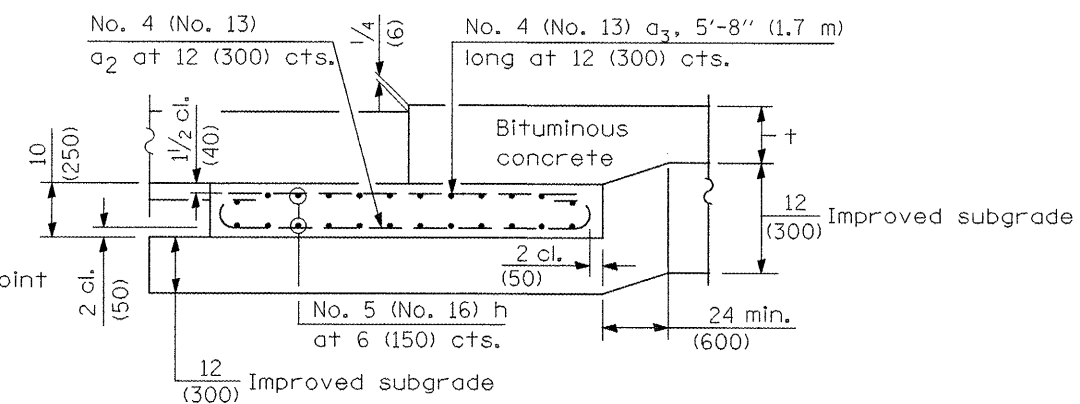
Rigid Pavement only:
 Wide Flange Beam Terminal Joint (See DETAIL AT BEAM - Standard 421101 or 421106) or 2 (50)
 Trans. Exp. Joint as detailed on Standard 420001.



DETAIL B*
 (Reinforcement Not Shown)



SECTION G-G - RIGID PAVEMENT
 (Showing reinforcement)



SECTION G-G - FLEXIBLE PAVEMENT
 (Showing reinforcement)

GENERAL NOTES

THICKNESS-"t"=Thickness of Pavement.
 See Standard 421001 for reinforcement details not shown.
 See Standard 420001 for joint details not shown.

FILE NAME =
 As Submitted -Roadway Plans.dgn

USER NAME = tarojs
 PLOT SCALE = 100.00' / IN.
 PLOT DATE = 12/12/2008

DESIGNED - OWR
 DRAWN - OWR
 CHECKED - FML
 DATE - OCTOBER, 2008

REVISED - N/A
 REVISED - N/A
 REVISED - N/A
 REVISED - N/A

**STATE OF ILLINOIS
 DEPARTMENT OF TRANSPORTATION**

**BRIDGE APPROACH PAVEMENT
 I-74 OVER TOWNSHIP ROAD 205**

SCALE: ----- SHEET NO. -- OF-- SHEETS STA. 532+00.00 TO STA. 590+88.88

F.A.I. RTE.	SECTION	COUNTY	TOTAL SHEETS	SHEET NO.
74	48(27RS-3) ₂ (27HB-5)I, I-1	KNOX	104	36
CONTRACT NO. 68062				
FED. ROAD DIST. NO. 4 ILLINOIS			FED. AID PROJECT 68062	