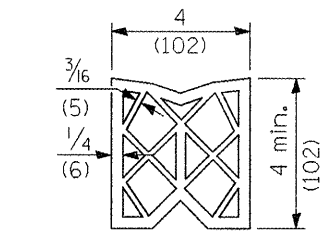
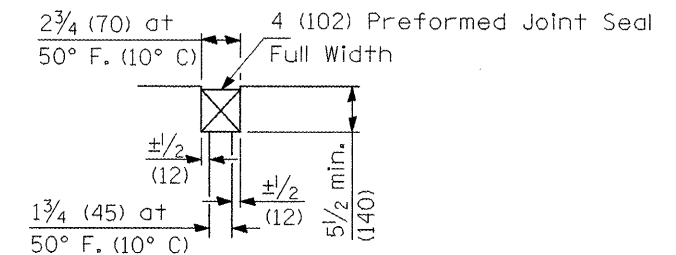


SECTION C-C

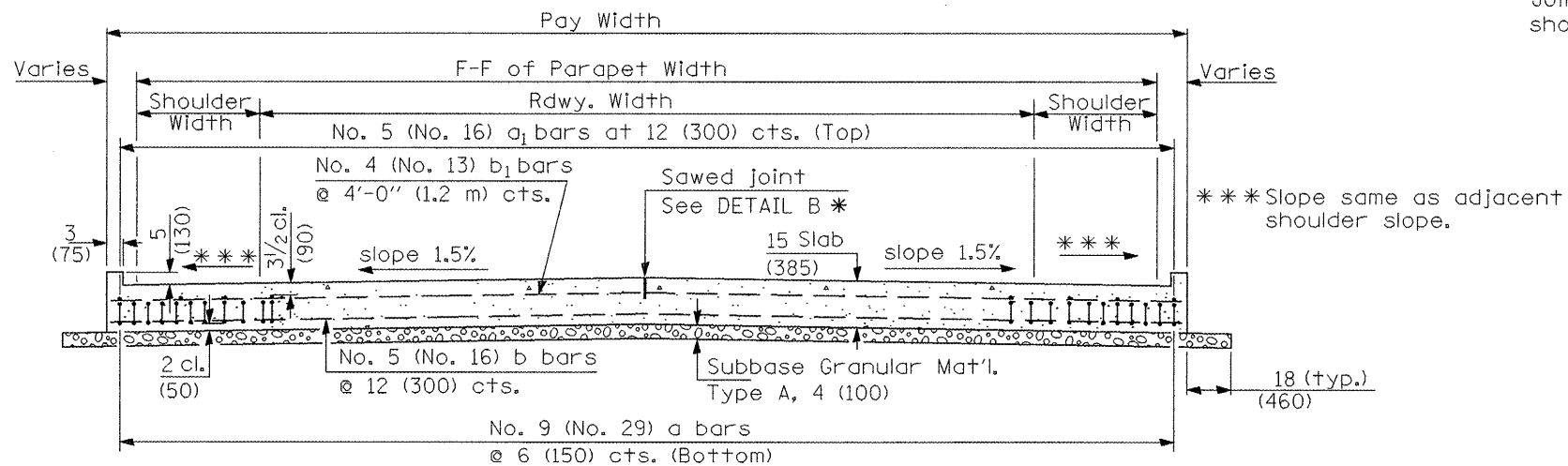
① Stagger No. 9 (No. 29) a bars as shown on plan - full width



PREFORMED JOINT SEAL



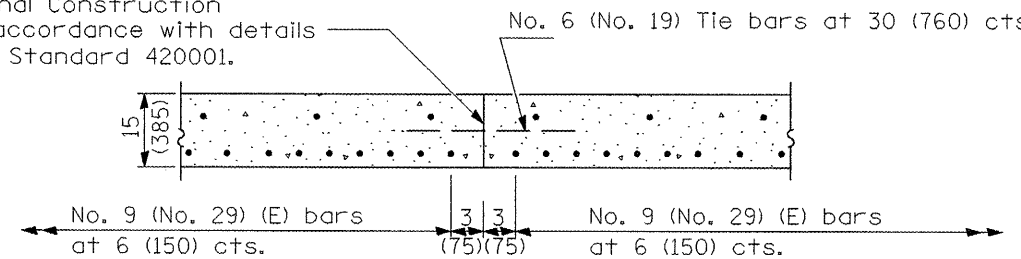
DETAIL A



SECTION D-D

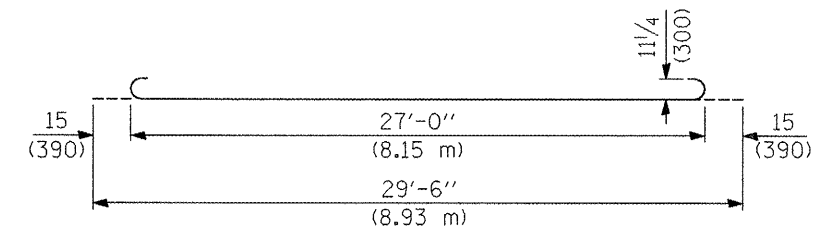
(See Plan for Dimensions not shown)

Longitudinal Construction Joint in accordance with details shown on Standard 420001.

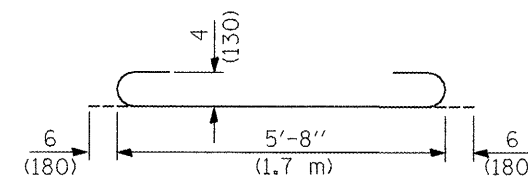


OPTIONAL LONGITUDINAL CONSTRUCTION JOINT

As approved by the Engineer, the Contractor may elect to reduce the widths of pour by use of the Optional Longitudinal Construction Joint shown. Joints shall be located at the edge of a traffic lane.

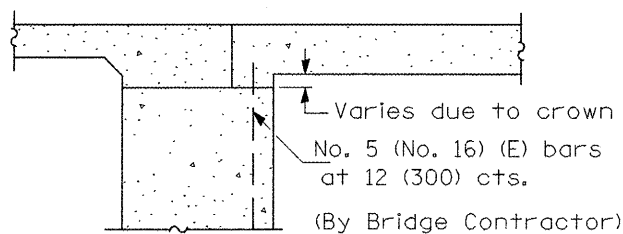


BAR a



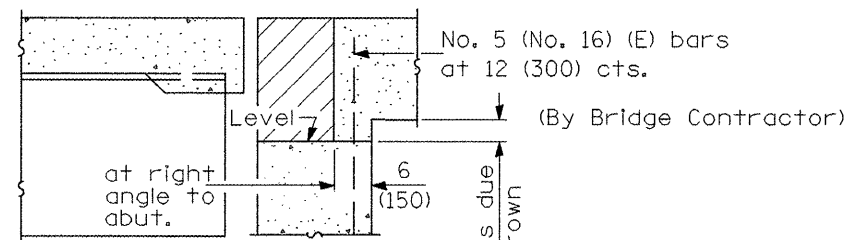
BAR a2

DESIGN STRESSES
 $f_y = 60,000$ p.s.i. (400 MPa)
 $f'_c = 3,500$ p.s.i. (24 MPa)
 $n = 8.5$



SECTION E-E

(Integral Abutments)



SECTION E-E

(Jointed Abutments)

(Sheet 3 of 4)

FILE NAME = As Submitted - Roadway Plans.dgn	USER NAME = toraja	DESIGNED - OWR	REVISED - N/A	STATE OF ILLINOIS DEPARTMENT OF TRANSPORTATION	BRIDGE APPROACH PAVEMENT I-74 OVER TOWNSHIP ROAD 205	F.A.I. RTE.	SECTION	COUNTY	TOTAL SHEETS	SHEET NO.	
		DRAWN - OWR	REVISED - N/A			74	48127RS-3; (27HB-5)I, I-1	KNOX	104	38	
		CHECKED - FML	REVISED - N/A			CONTRACT NO. 68062					
		DATE - OCTOBER, 2008	REVISED - N/A			FED. ROAD DIST. NO. 4 ILLINOIS FED. AID PROJECT 68062					
				SCALE: -----	SHEET NO. -- OF-- SHEETS	STA. 532+00.00 TO STA. 590+88.88					