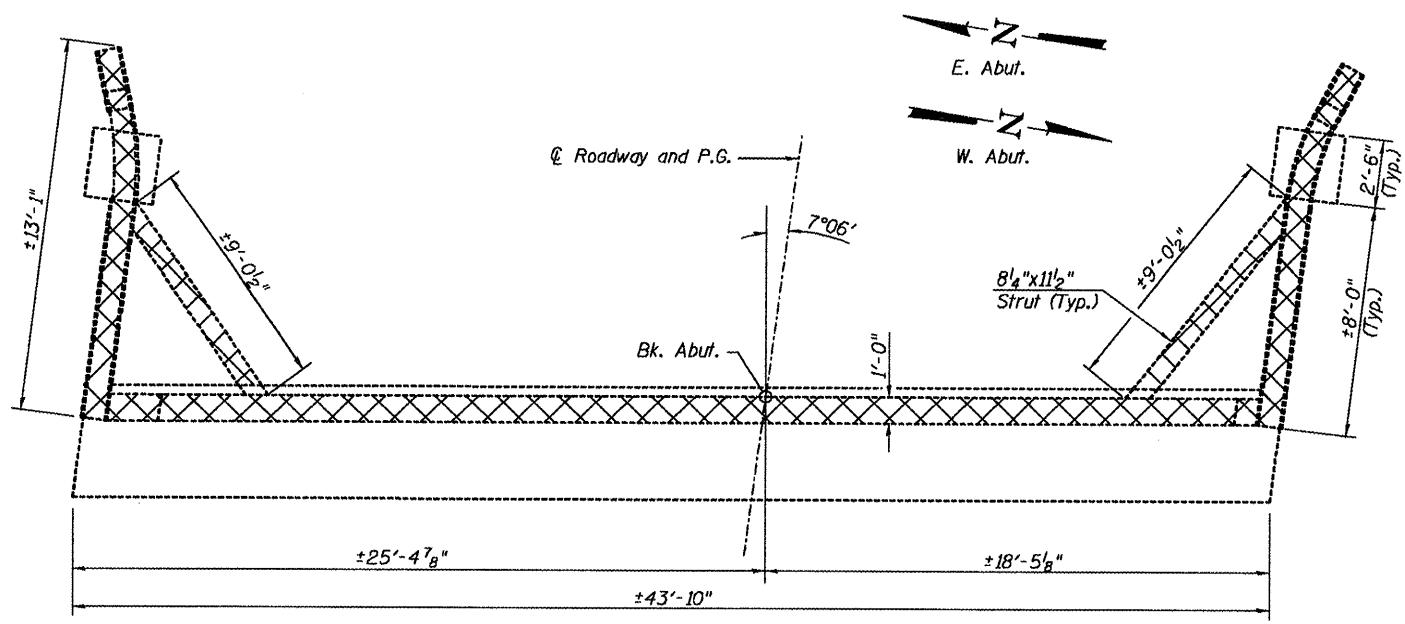
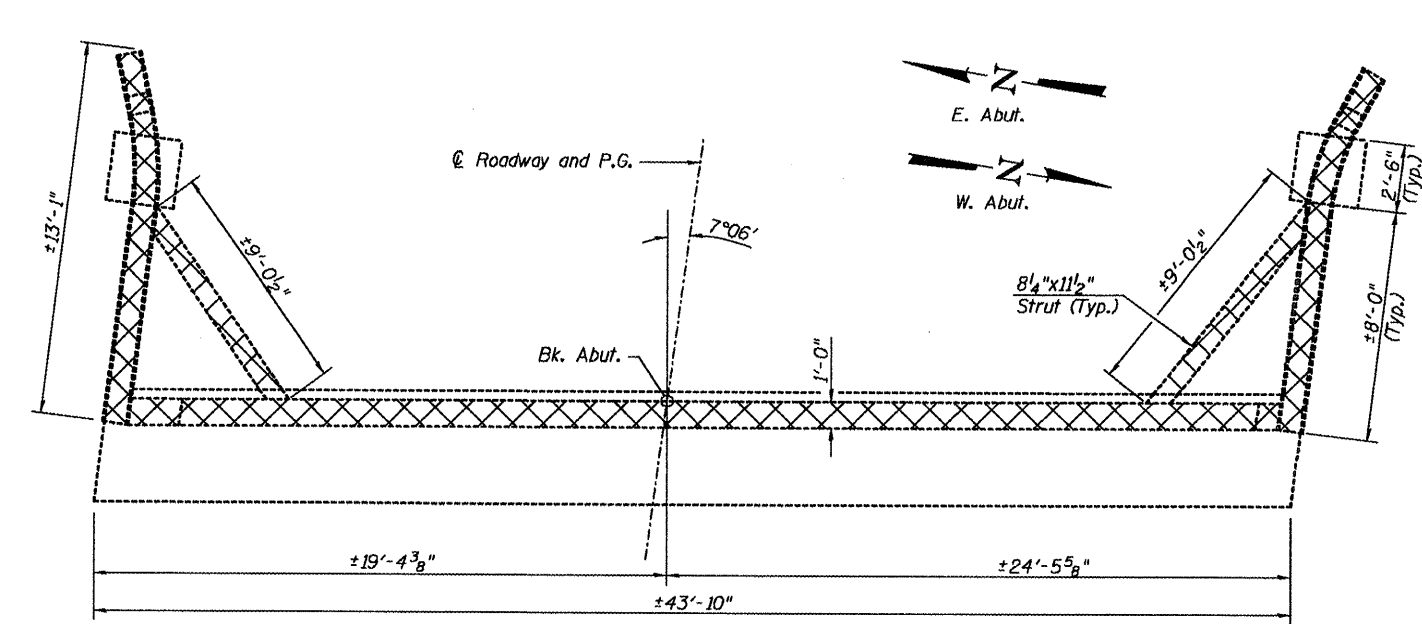


STATE OF ILLINOIS  
DEPARTMENT OF TRANSPORTATION



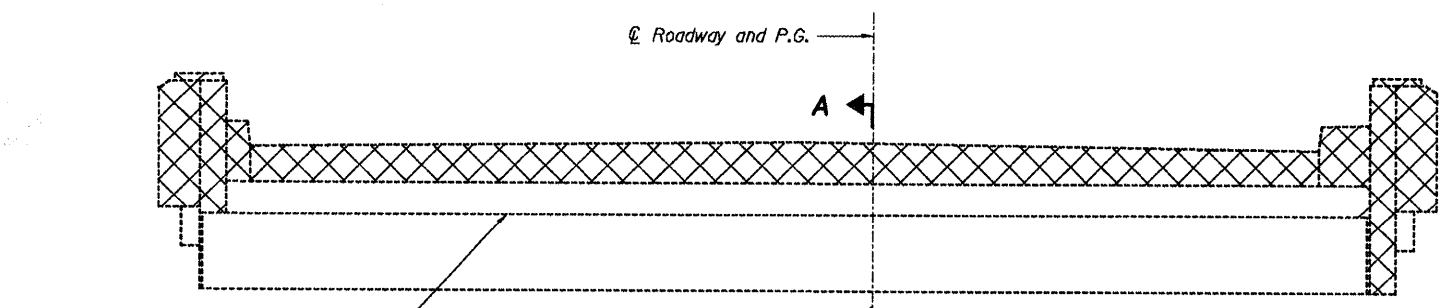
**PLAN**

(East Abutment North Structure and West Abutment South Structure)



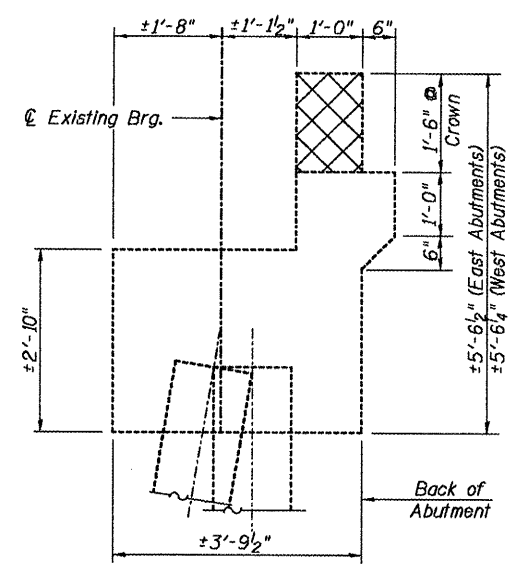
**PLAN**

(West Abutment North Structure and East Abutment South Structure)



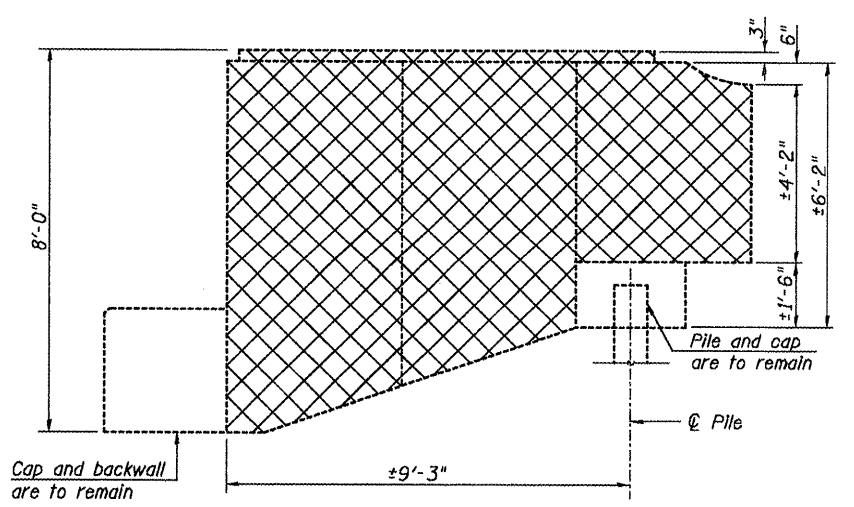
**ELEVATION**

West Abut. North Structure 747.37±  
East Abut. North Structure 747.71±  
West Abut. South Structure 747.42±  
East Abut. South Structure 747.78±



**SECTION A-A**

(Horizontal dimensions @ Rt. L's)



**SIDE ELEVATION OF WINGWALL**

**BILL OF MATERIAL**

(Four Abutments)

ITEM	UNIT	QUANTITY
* Concrete Removal	Cu. Yd.	33.6

\* Quantity does not include approach slab removal.

Notes:  
Cross Hatched Area Indicates Concrete Removal.  
Existing reinforcement shall be cleaned and incorporated into the new construction. Cost included with Concrete Removal.  
Burn existing bearing anchor bolts flush with existing concrete surface. Grind existing anchor bolts smooth and seal with epoxy. Cost included with Concrete Removal.  
Any reinforcement bars that are damaged during concrete removal operations shall be repaired or replace using an approved bar splicer or anchorage system in accordance with IDOT Standard Specification Article 501.05. Cost included in Concrete Removal.

**CONCRETE REMOVAL**  
**I-74 OVER TOWNSHIP ROAD 205**  
**F.A.I. RTE. 74 - SEC. 48-(27HB-5)I-1**  
**KNOX COUNTY**  
**STATION 570+11.72**  
**STRUCTURE NO. 048-0011 (WB), 0012 (EB)**

LIN ENGINEERING, LTD. Consulting Engineers Chatham, Illinois <small>Designed by ESH Checked by MTH Drawn by ESH Date: 10/2008 File: 048-0011,0012.dwg</small>	SHEET NO. 12	F.A.I. RTE. 74	SECTION 48-(27HB-5)I-1	COUNTY KNOX	TOTAL SHEETS 104	SHEET NO. 51
	18 SHEETS	CONTRACT NO. 68062				
FED. ROAD DIST. NO. ILLINOIS FED. AID PROJECT						