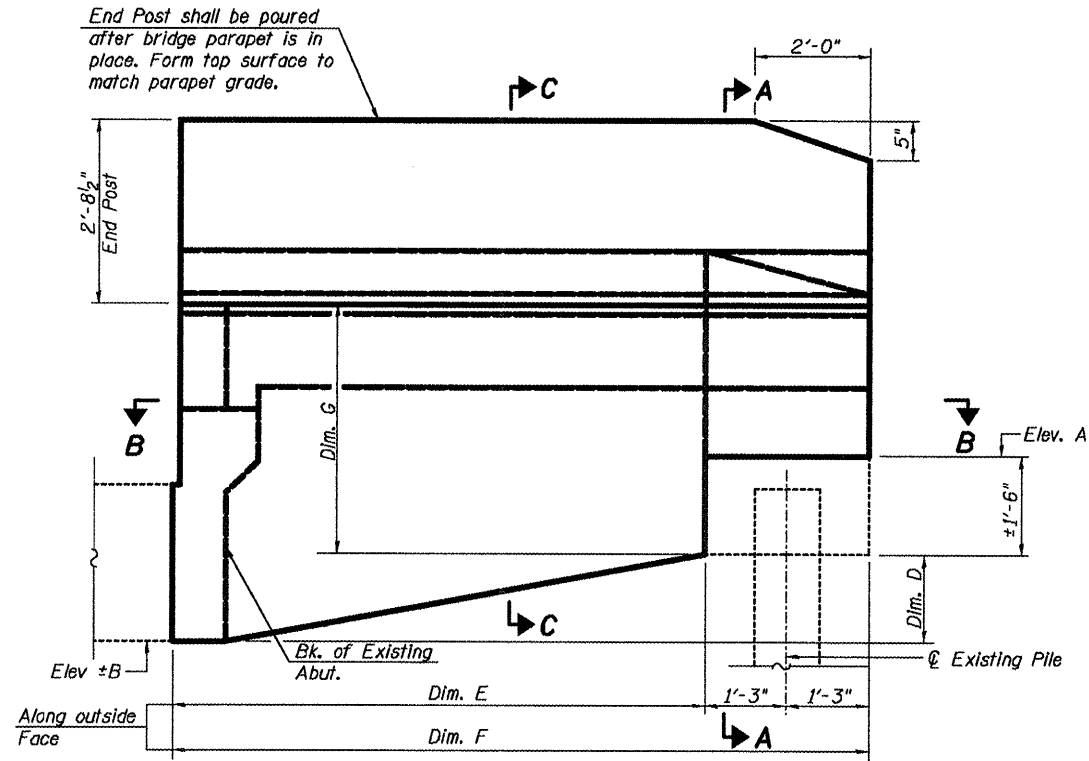


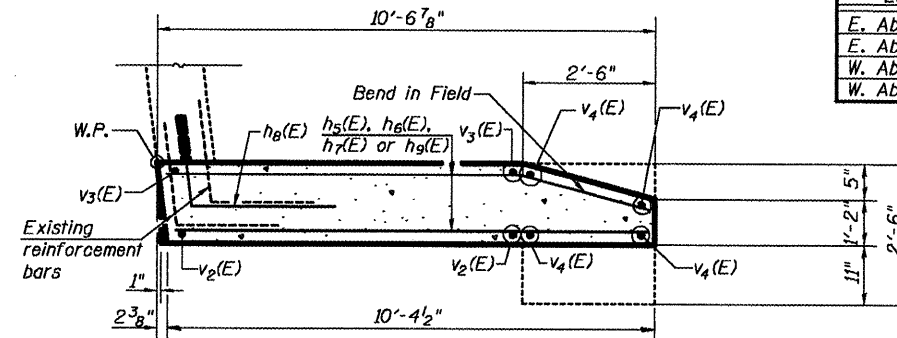
STATE OF ILLINOIS
DEPARTMENT OF TRANSPORTATION

ELEVATION & DIMENSION TABLE

Location	Elev. A	Elev. B	Dim. C	Dim. ±D	Dim. E	Dim. F	Dim. G
E. Abut. N. Wing	747.95	744.88	2'-5"	1'-6 7/8"	8'-0"	10'-6"	3'-11"
E. Abut. S. Wing	748.01	744.88	2'-6"	1'-7 1/2"	7'-11 5/8"	10'-5 5/8"	4'-0"
W. Abut. N. Wing	747.62	744.59	2'-5 1/4"	1'-6 3/8"	7'-11 1/8"	10'-5 1/8"	3'-11 1/4"
W. Abut. S. Wing	747.60	744.59	2'-4 1/2"	1'-6 1/2"	8'-0"	10'-6"	3'-10 1/2"

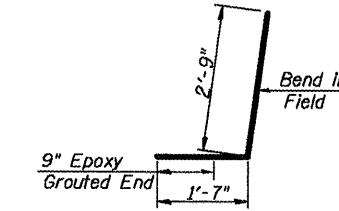


WINGWALL ELEVATION
(Showing Dimensions)

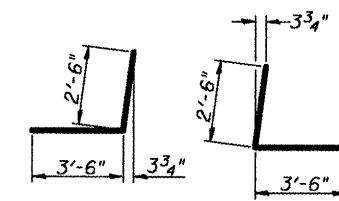


SECTION B-B

North Wingwall of West Abutment shown
South Wingwall of East Abutment shown



BAR h₈(E)



BAR h₁(E)

BAR h₂(E)

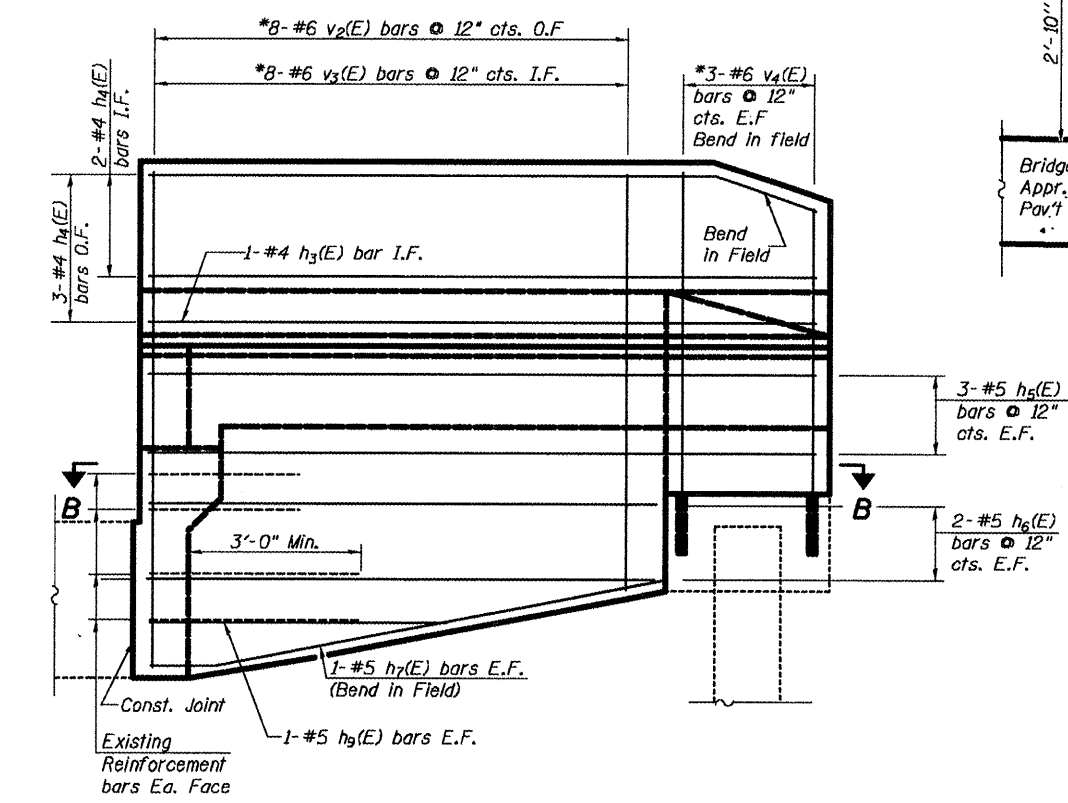
BILL OF MATERIAL
(Both Abutments)

Bar	No.	Size	Length	Shape
h ₁ (E)	8	#6	40'-6"	—
h ₂ (E)	8	#5	6'-0"	└
h ₃ (E)	8	#5	6'-0"	└
h ₃ (E)	4	#4	10'-3"	—
h ₄ (E)	20	#4	10'-3"	—
h ₅ (E)	24	#5	10'-3"	—
h ₆ (E)	16	#5	7'-9"	—
h ₇ (E)	8	#5	7'-11"	—
h ₈ (E)	16	#5	4'-4"	└
h ₉ (E)	8	#5	4'-4"	—
v(E)	82	#5	2'-2"	—
v ₁ (E)	82	#4	1'-0"	—
v ₂ (E)	32	#6	8'-1"	—
v ₃ (E)	32	#6	8'-1"	—
v ₄ (E)	24	#6	6'-0"	—
Structure Excavation		Cu. Yd.	62	
Concrete Structures		Cu. Yd.	10.3	
Reinforcement Bars, Epoxy Coated		Pound	2540	
Concrete Sealer		Sq. Ft.	482	
Structural Repair of Concrete (Depth Equal To or Less Than 5 in.)		Sq. Ft.	3.0	

Concrete Sealer shall be applied to the abutment seal, front face of backwall, and front exposed face of pile cap before pouring slab.

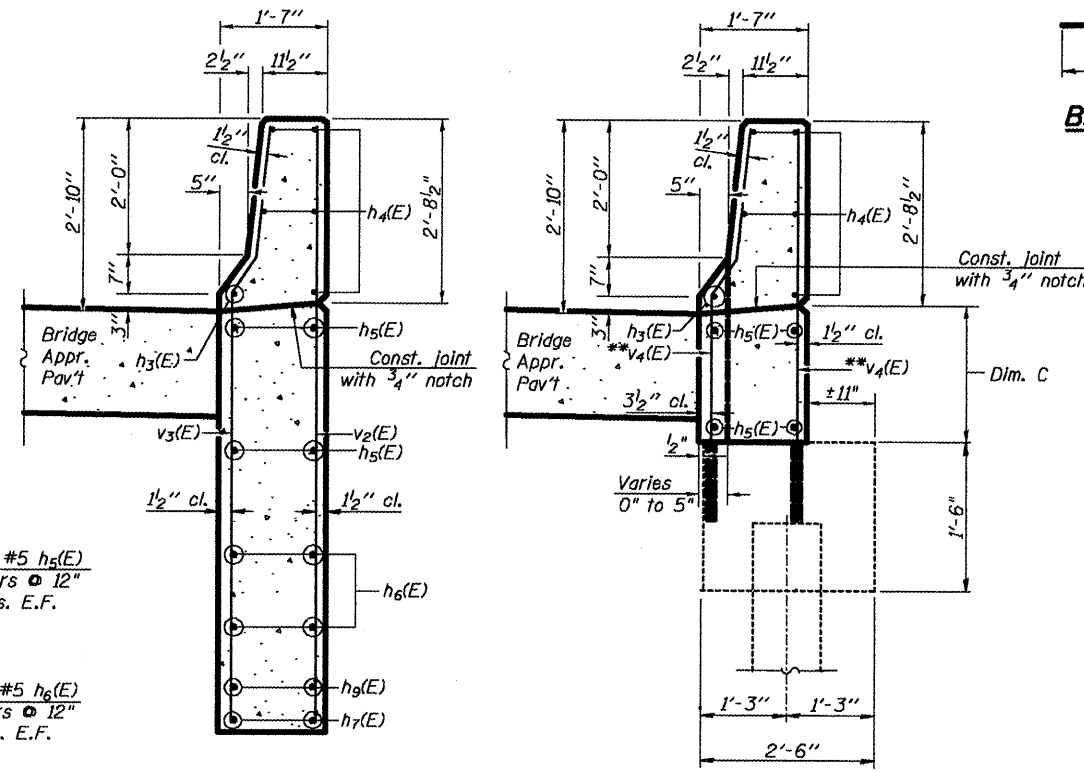
The concrete repair quantities shown are for estimating purposes only. The area to be repaired will be determined by the Engineer at the time of construction. Actual repair locations shall be shown on the as-built plans.

ABUTMENT DETAILS - 1
(EAST ABUTMENT - NORTH STRUCTURE)
(WEST ABUTMENT - SOUTH STRUCTURE)
I-74 OVER TOWNSHIP ROAD 205
F.A.I. RTE. 74 - SEC. 48-(27HB-5)I,I-1
KNOX COUNTY
STATION 570+11.72
STRUCTURE NO. 048-0011 (WB), 0012 (EB)



WINGWALL ELEVATION
(Showing Reinforcement)

* Cut to fit.



**Epoxy Grout v₄(E) bars min. 9" deep in field drilled holes in accordance with Section 584 of the Standard Specifications.

Notes:
Quantity of concrete in end post included with concrete superstructure on sheet 9 of 18.

LIN ENGINEERING, L.T.D. Consulting Engineers Chattanooga, Illinois	SHEET NO. 15	F.A.I. RTE. 74	SECTION 48-(27HB-5)I,I-1	COUNTY KNOX	TOTAL SHEETS 104	SHEET NO. 54
	18 SHEETS	CONTRACT NO. 68062		FED. ROAD DIST. NO. ILLINOIS FED. AID PROJECT		