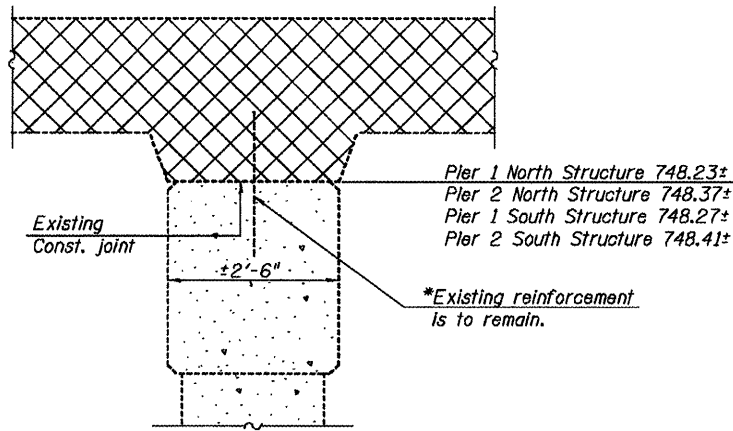
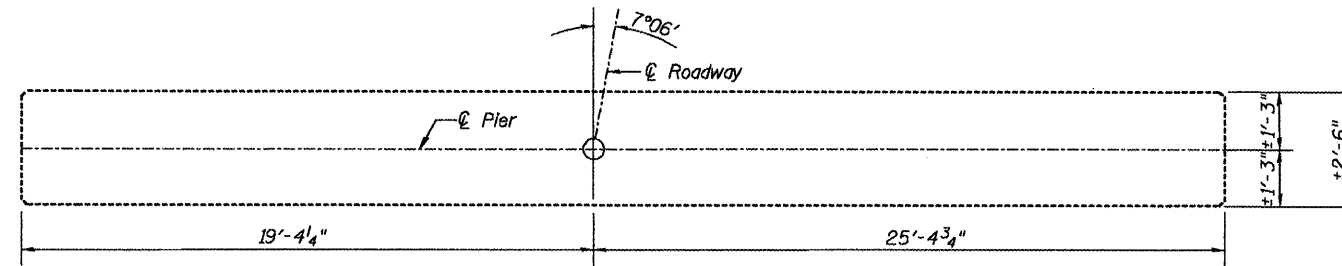


STATE OF ILLINOIS
DEPARTMENT OF TRANSPORTATION

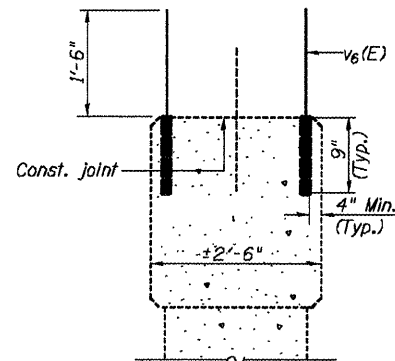
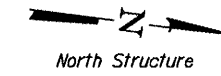


SECTION THRU PIER
(Horizontal dimensions @ Rt. L's)

* Existing reinforcement shall be cleaned and incorporated into the new construction. Cost included with Concrete Removal.

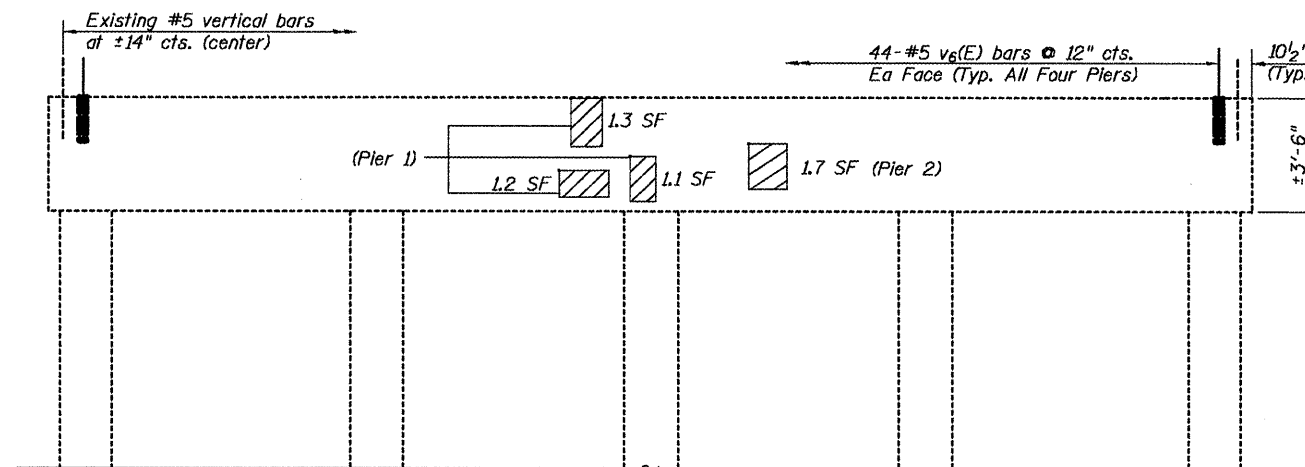


TOP PLAN



SECTION THRU PIER
(Horizontal dimensions @ Rt. L's)

Epoxy grout v₆(E) bars in 9" deep field drilled holes in accordance with Section 584 of the Standard Specifications.



ELEVATION

N. Structure, Pier 1
S. Structure, Pier 2
(Looking West)

SOUTH END VIEW

N. Structure, Pier 1
(Looking North)

BILL OF MATERIAL
(Four Piers)

Bar	No.	Size	Length	Shape
v ₆ (E)	352	#5	2'-3"	—
Reinforcement Bars, Epoxy Coated			Pound	830
Structural Repair of Concrete (Depth Equal To or Less Than 5 in.)			Sq. Ft.	5.6

The quantities shown are for estimating purposes only. The area to be repaired will be determined by the Engineer at the time of construction. Actual repair locations shall be shown on the as-built plans.

LEGEND

- Indicates Removal of Existing Superstructures.
- Indicates Structural Repair of Concrete (Depth Equal to or Less Than 5")
- SF Square Feet

PIERS 1 & 2
(NORTH & SOUTH STRUCTURES)
I-74 OVER TOWNSHIP ROAD 205
F.A.I. RTE. 74 - SEC. 48-(27HB-5)I,I-1
KNOX COUNTY
STATION 570+11.72
STRUCTURE NO. 048-0011 (WB), 0012 (EB)

LIN ENGINEERING, LTD. Consulting Engineers Ottawa, Illinois	SHEET NO. 17	F.A.I. RTE.	SECTION	COUNTY	TOTAL SHEETS	SHEET NO.	
	18 SHEETS	74	48-(27HB-5)I,I-1	KNOX	104	56	
		CONTRACT NO. 68062					
		FED. ROAD DIST. NO. ILLINOIS FED. AID PROJECT					