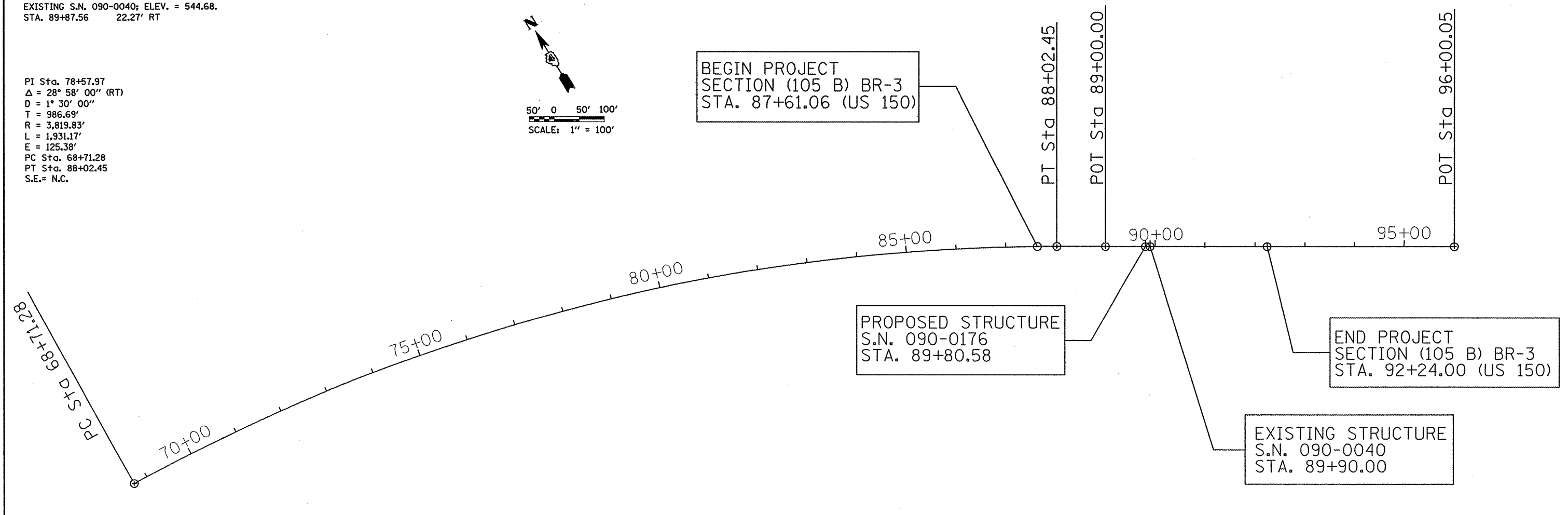
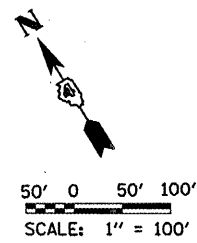


BENCHMARK:
CHISELED "C" ON SW WINGWALL OF
EXISTING S.N. 090-0040; ELEV. = 544.68.
STA. 89+87.56 22.27' RT

PI Sta. 78+57.97
Δ = 28° 58' 00" (RT)
D = 1° 30' 00"
T = 986.69'
R = 3,819.83'
L = 1,931.17'
E = 125.38'
PC Sta. 68+71.28
PT Sta. 88+02.45
S.E. = N.C.



FILE NAME = ...0040alignmentandties.dgn	USER NAME = Plotted by new6	DESIGNED - ST	REVISED -	STATE OF ILLINOIS DEPARTMENT OF TRANSPORTATION	ALIGNMENT & TIES US 150 OVER LITTLE FARM CREEK S.N. 090-0040	F.A.U. RTE. 6757	SECTION (105B) BR-3	COUNTY TAZEWELL	TOTAL SHEETS 20	SHEET NO. 133	
	PLOT SCALE = 200.0000 ft / IN.	DRAWN - ST	REVISED -			SCALE: 1" = 100'	SHEET NO. OF SHEETS	STA. 87+61.06 TO STA. 92+24.00	CONTRACT NO. 68086		
	PLOT DATE = 7/29/2008	CHECKED - FL	REVISED -			FED. ROAD DIST. NO. ILLINOIS FED. AID PROJECT					
		DATE - 12/2007	REVISED -								