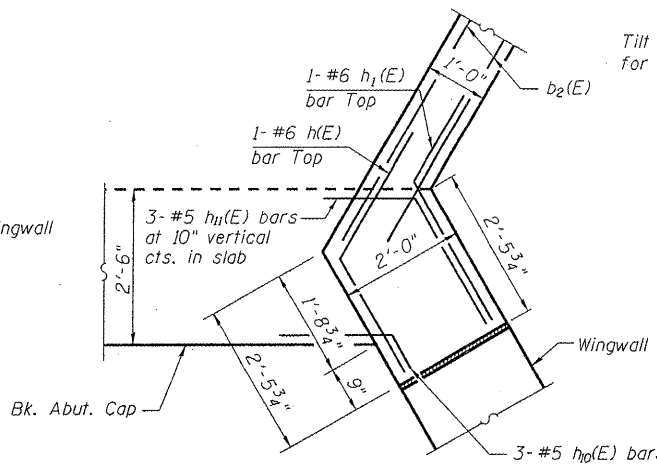
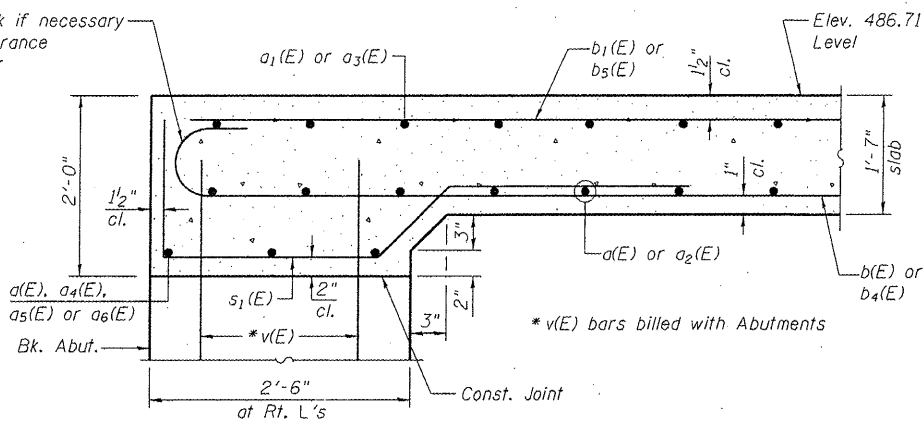


DETAIL B
(At southeast and northwest corners)



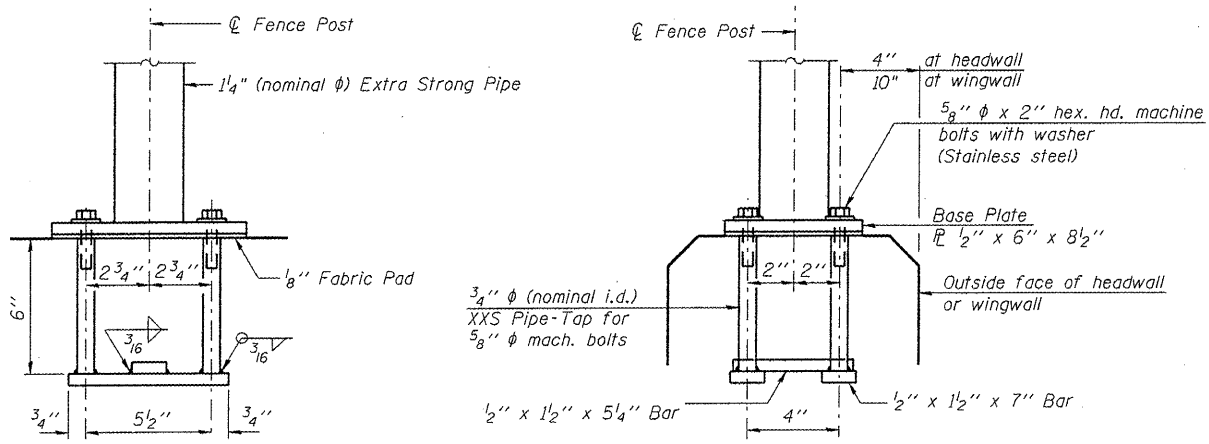
DETAIL A
(At southwest and northeast corners)



SECTION C-C

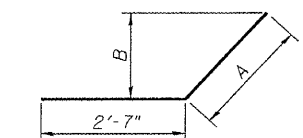
HEADWALL CORNER DETAILS

See sheet 9 of 18 for details of PJF between headwall and wingwall.
See sheet 8 of 18 for details of h8(E), h9(E), h10(E) and h11(E) bars.



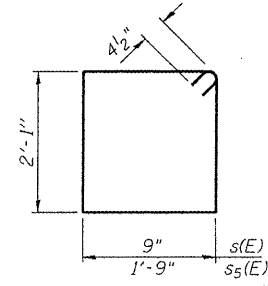
CHAIN LINK FENCE POST ATTACHMENT DETAIL

In lieu of the cast-in-place anchor device shown, the Contractor has the option of drilling and setting 5/8" diameter anchor rods according to Article 509.06 of the Standard Specifications. Embedment shall be according to the manufacturer's specifications.
All chain link fence elements shall be galvanized according to article 509.05 of the standard specifications.
All elements of the chain link fence and their attachments shall be paid for as "Chain Link Fence, 4' Attached to Structure".

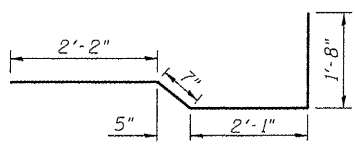


BARS h(E) THRU h3(E)

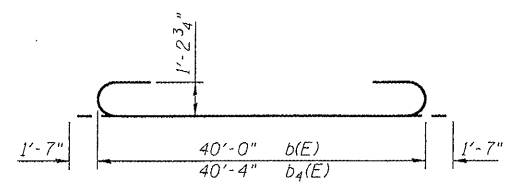
Bar	A	B
h(E)	2'-3"	1'-11 3/8"
h1(E)	2'-5"	2'-1 1/8"
h2(E)	2'-10"	2'-0"
h3(E)	2'-2"	1'-6 3/8"



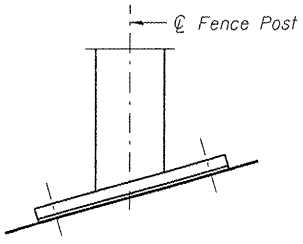
BARS s(E) & s5(E)



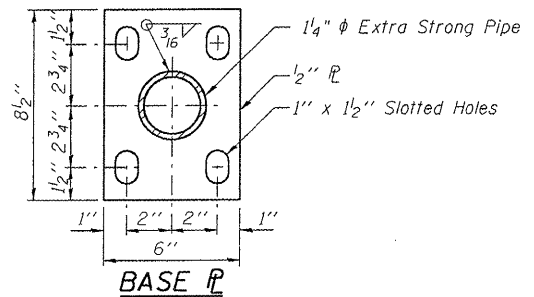
BAR s1(E)



BARS b(E) & b4(E)



DETAIL AT WINGWALL



BASE PLATE

SUPERSTRUCTURE BILL OF MATERIAL

Bar	No.	Size	Length	Shape
a(E)	259	#6	27'-6"	—
a1(E)	168	#5	21'-0"	—
a2(E)	50	#6	48'-5"	—
a3(E)	24	#5	48'-5"	—
a4(E)	9	#6	33'-2"	—
a5(E)	6	#6	29'-6"	—
a6(E)	12	#6	31'-3"	—
b(E)	254	#11	43'-2"	C
b1(E)	80	#5	40'-0"	—
b2(E)	4	#6	37'-6"	—
b3(E)	12	#6	24'-8"	—
b4(E)	74	#11	43'-6"	C
b5(E)	22	#5	39'-3"	—
h(E)	2	#6	4'-10"	—
h1(E)	2	#6	5'-0"	—
h2(E)	2	#6	5'-5"	—
h3(E)	2	#6	4'-9"	—
h8(E)	6	#5	4'-1"	—
h9(E)	6	#5	6'-3"	—
h10(E)	6	#5	4'-2"	—
h11(E)	6	#5	5'-8"	—
s(E)	70	#4	6'-5"	□
s1(E)	320	#5	6'-6"	—
s5(E)	68	#4	8'-5"	□
Reinforcement Bars, Epoxy Coated			Pound	103810
Concrete Superstructure			Cu. Yd.	377.4

Note:
Work this sheet with sheet 4 of 18.

Lin Engineering, Ltd.
Consulting Engineers
Cheltenham, Illinois

Designed By: RMW
Checked By: MTH
Date: 09/2007

REVISIONS	
NAME	DATE

ILLINOIS DEPARTMENT OF TRANSPORTATION
SUPERSTRUCTURE DETAILS
U.S. ROUTE 150 OVER
LITTLE FARM CREEK
F.A.U. ROUTE 6757 SECTION (105B)BR-2
TAZEWELL COUNTY
STA. 49+20.43
S.N. 090-0175