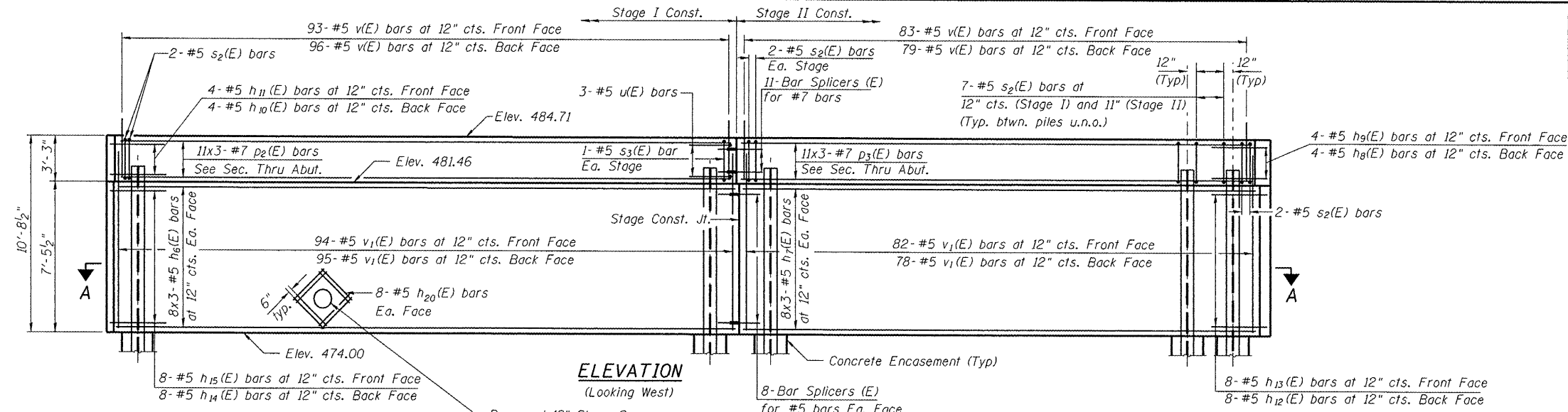
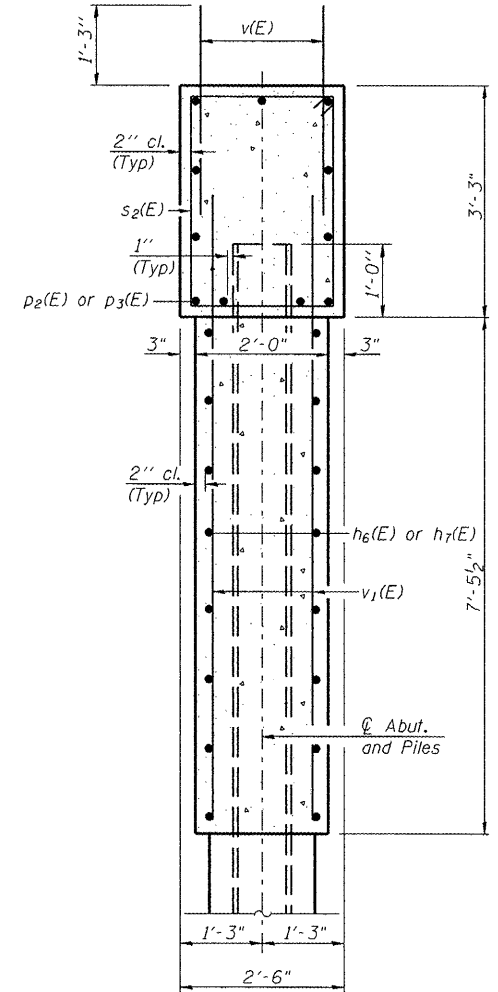


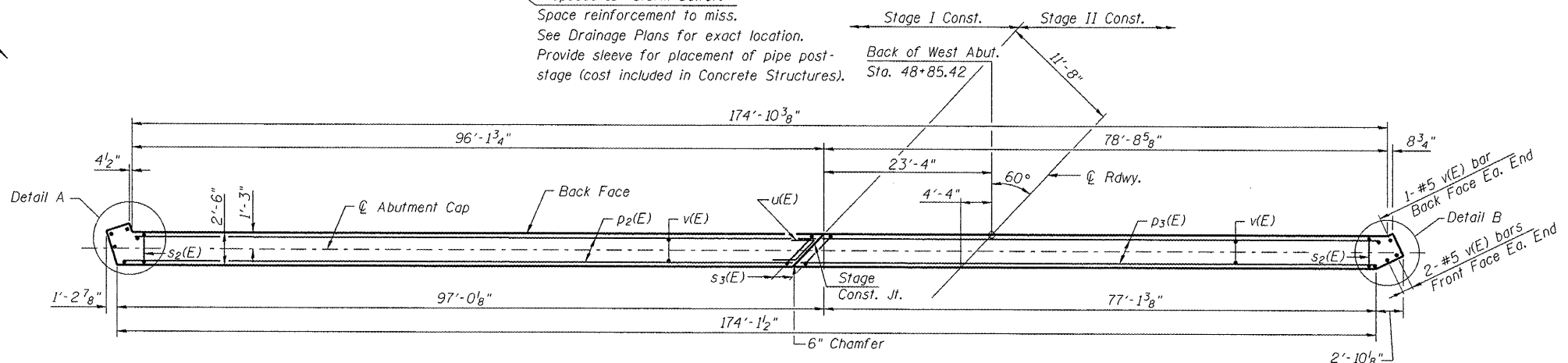
ROUTE NO.	SECTION	COUNTY	DATE	SHEET	SHEET NO. 6 18 SHEETS
F.A.U. 6757 (U.S. 150)	(105B)BR-2	TAZEWELL	133	56	
FED. ROAD DIST. NO. 7	ILLINOIS	FED. AID PROJECT-			
CONTRACT NO. 68096					



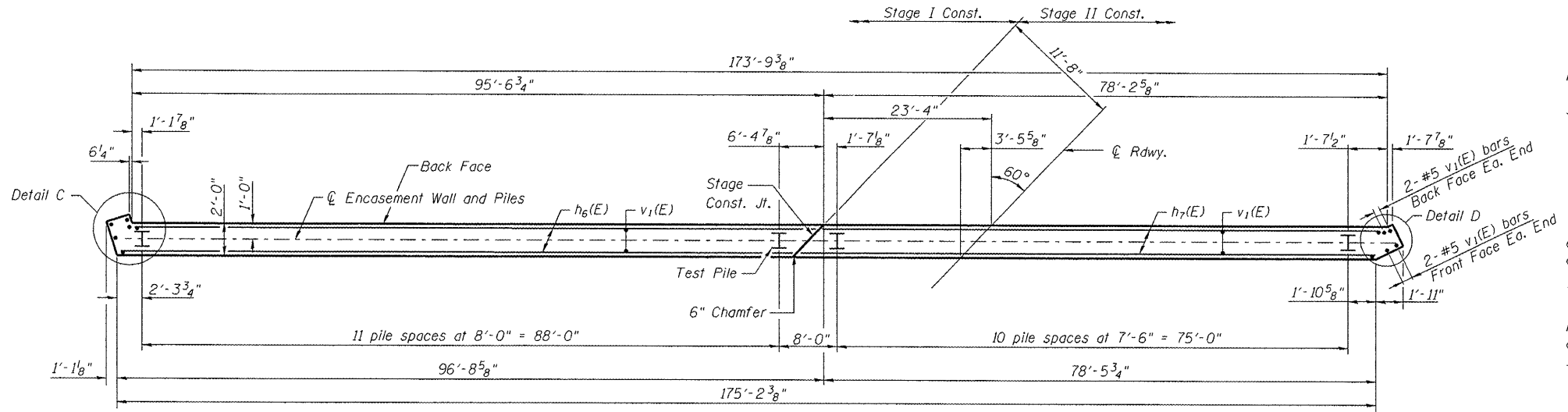
ELEVATION
(Looking West)



SEC. THRU ABUT.
(Dimensions at Rt. L's)



TOP PLAN
(Showing Abutment Cap)



SECTION A-A
(Showing Pile Encasement)

Notes:
 Bars indicated thus 11x3-#7 bars, etc. indicates 11 lines of bars with 3 lengths per line.
 For details of Bar Splicers, see sheet 13 of 18.
 For details of Piles and Concrete Encasement, see sheet 14 of 18.
 For drainage details, see Section Thru Abutment on Sheet 2 of 18.
 For sheet piling wingwall details see sheet 9 of 18.
 See sheet 8 of 18 for Bill of Material and bar bend details.
 See sheet 8 of 18 for Details A, B, C and D.
 Backfill behind the Abutments shall not be placed until after the slab is in place and has cured. Backfill behind the Abutments shall be carried up simultaneously, and at no time shall the fill be more than 2 feet higher than the opposite Abutment.
 See sheet 10 of 18 for location of cast-in-place H.S. threaded rods for Temporary Support System.
 If a portion of the pier wall or concrete encasement is under water, reinforcement may be placed underwater into forms. Concrete shall be tremied according to Article 503.08 of the Standard Specifications to an elevation of 1'-0" above the water line at the time of construction.

PILE DATA

Type: Steel HP12x53
 Nominal Required Bearing: 418 kips
 Allowable Resistance Available: 139 kips
 Est. Length: 67 Ft.
 No. Production Piles: 22
 No. Test Piles: 1

MINIMUM BAR LAP

#5 bar = 2'-2"
 #7 bar = 3'-5"

REVISIONS

NAME	DATE

Lin Engineering, Ltd.
 Consulting Engineers
 Chatham, Illinois

Designed By: RRM | Checked By: MFM | Drawn By: ADB
 Date: 03/2007 | File: 090-0175.DSN

ILLINOIS DEPARTMENT OF TRANSPORTATION
WEST ABUTMENT
 U.S. ROUTE 150 OVER
 LITTLE FARM CREEK
 F.A.U. ROUTE 6757 SECTION (105B)BR-2
 TAZEWELL COUNTY
 STA. 49+20.43
 S.N. 090-0175

9:20:41 PM
 ...Struct\SN090-0175-090-0175.dgn
 11/20/2008