

ROUTE NO.	SECTION	COUNTY	SHEETS	SHEET	SHEET NO.
FAU 6757 (US 150)	(105B) BR-3	Tazewell	133	70	24 SHEETS
FED. ROAD DIST. NO. 7	ILLINOIS	FED. AID PROJECT			

Contract #68086

TOTAL BILL OF MATERIAL

ITEM	UNIT	SUPER	SUB	TOTAL
Porous Granular Embankment (Special)	Cu. Yd.	-	238	238
Stone Riprap, Class A5	Sq. Yd.	-	1578	1578
Filter Fabric	Sq. Yd.	-	1636	1636
Removal of Existing Structures No. 2	Each	1	-	1
Structure Excavation	Cu. Yd.	-	450	450
Concrete Structures	Cu. Yd.	-	61.2	61.2
Concrete Superstructure	Cu. Yd.	146.6	-	146.6
Bridge Deck Grooving	Sq. Yd.	645	-	645
** Protective Coat	Sq. Yd.	794	-	794
Furnishing and Erecting Precast Prestressed Concrete I Beams, 42"	Foot	558	-	558
Reinforcement Bars, Epoxy Coated	Pound	26330	8110	34440
Bar Splicers	Each	299	20	319
Steel Railing (Temporary)	Foot	30	-	30
Bicycle Railing	Foot	78	-	78
Furnishing Metal Shell Piles, 12"	Foot	-	1159	1159
Driving Piles	Foot	-	1159	1159
Test Pile, Metal Shells	Each	-	2	2
Temporary Sheet Piling	Sq. Ft.	-	1428	1428
Name Plates	Each	1	-	1
Geocomposite Wall Drain	Sq. Yd.	-	124	124
Pipe Underdrains for Structures 4"	Foot	-	154	154
Underwater Structure Excavation Protection - Location No. 3	Each	-	1	1
Permanent Steel Sheet Piling	Sq. Ft.	-	679	679
Grouted Riprap	Sq. Yd.	-	55	55
Temporary Slab Support System	Each	1	-	1

**Quantity includes approach pavement.

GENERAL NOTES

Reinforcement bars shall conform to the requirements of ASTM A 706 Gr 60. See Special Provisions.

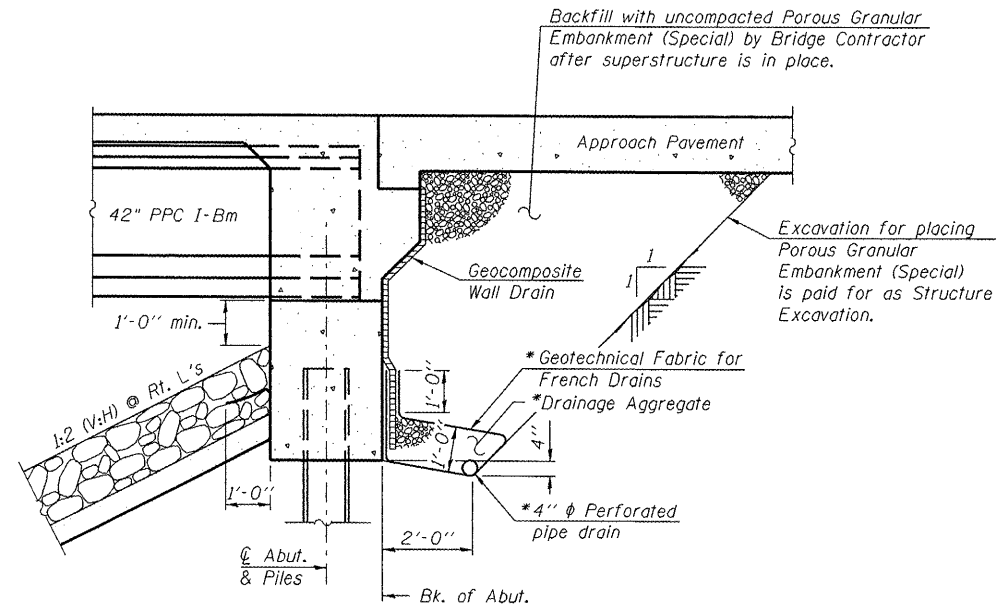
Reinforcement bars designated (E) shall be epoxy coated.

Layout of slope protection system may be varied in the field to suit ground conditions as directed by the Engineer.

The Contractor shall drive test piles to 110% of the nominal required bearing specified in production locations at substructures specified or approved by the Engineer before ordering the remainder of piles.

The Contractor shall limit the pile hammer size selected considering the relatively high soil strengths indicated in the borings and avoid overdriving the piles beyond their nominal required bearing to prevent pile damage.

Slipforming of the parapets is not allowed.

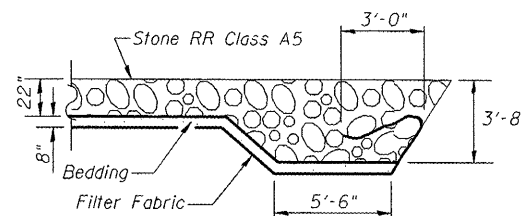


SECTION THRU INTEGRAL ABUTMENT
(Horiz. dim. @ Rt. L's)

* Included in the cost of Pipe Underdrains for Structures.

Note:

All drainage system components shall extend to 2'-0" from the end of each wingwall except an outlet pipe shall extend until intersecting with the side slopes. The pipes shall drain into concrete headwalls. (See Article 601.05 of the Standard Specifications and Highway Standard 601101).



SECTION A-A

STATION 89+80.58
BUILT BY
STATE OF ILLINOIS
F.A.U. RT. 6757 SEC. (105B)BR-3
LOADING HS20
STRUCTURE NO. 090-0176

NAME PLATE
See Std. 515001

ILLINOIS DEPARTMENT OF TRANSPORTATION
GENERAL NOTES & DETAILS
U.S. 150 OVER LITTLE FARM CREEK
F.A.U. ROUTE 6757 SECTION (105B)BR-3
TAZEWELL COUNTY
STA. 89+80.58
S.N. 090-0176

DESIGNED BY	CHECKED BY	DRAWN BY	REVISIONS	
			NAME	DATE
RKW	DLS	AJF		
Date: 10/07	File: 090-0176.DWG			

LI LIN ENGINEERING, LTD.
Consulting Engineers
Chatham, Illinois