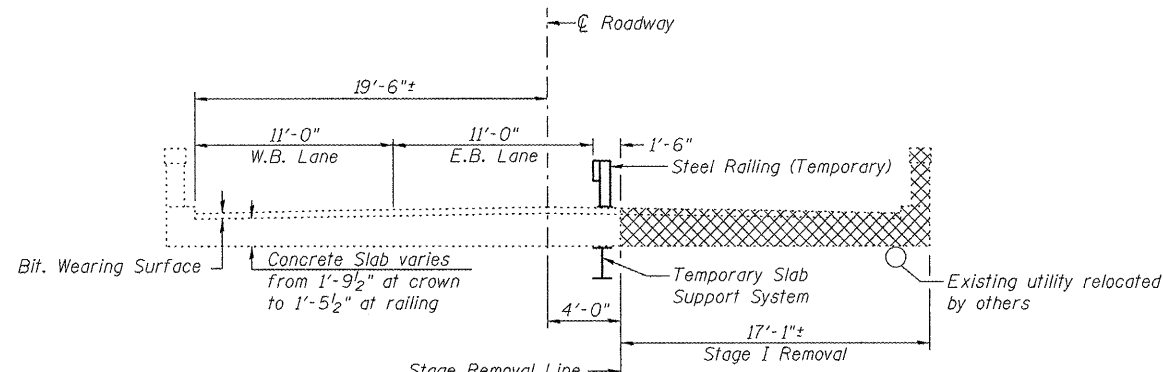
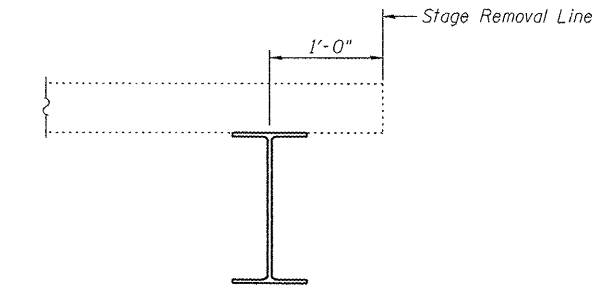


ROUTE NO.	SECTION	COUNTY	TOTAL SHEETS	SHEET	SHEET NO.
FAU 6757 (US 150)	(105B) BR-3	Tazewell	133	71	24 SHEETS
FED. ROAD DIST. NO. 7	ILLINOIS	FED. AID PROJECT			

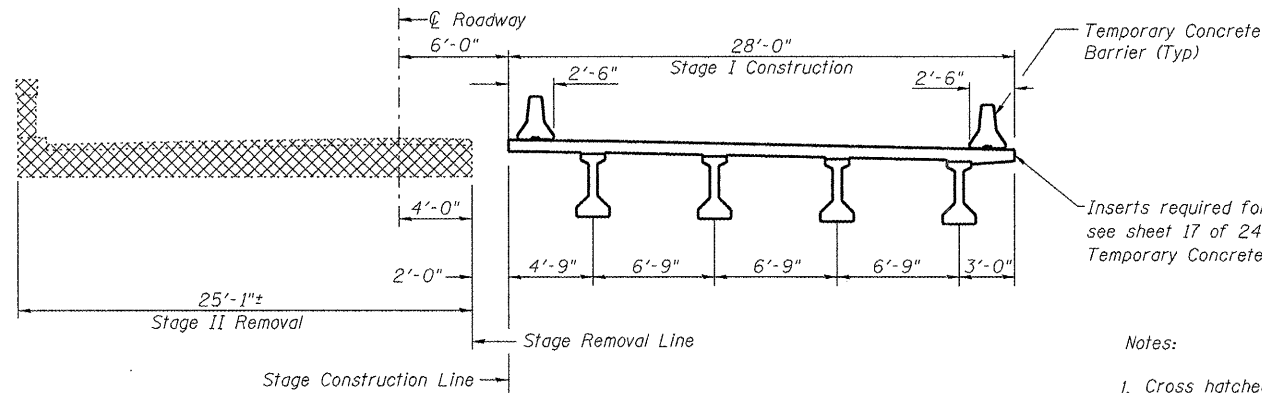
Contract #68086



STAGE I REMOVAL & TRAFFIC
(Looking East)



TEMPORARY SUPPORT DETAIL



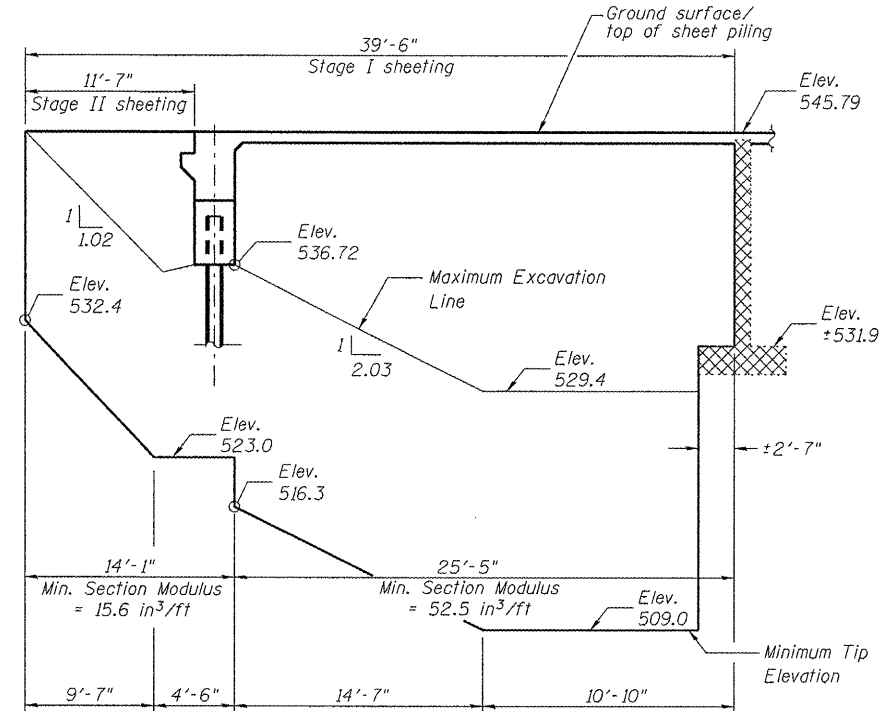
STAGE I CONSTRUCTION & STAGE II REMOVAL
(Looking East)

Notes:

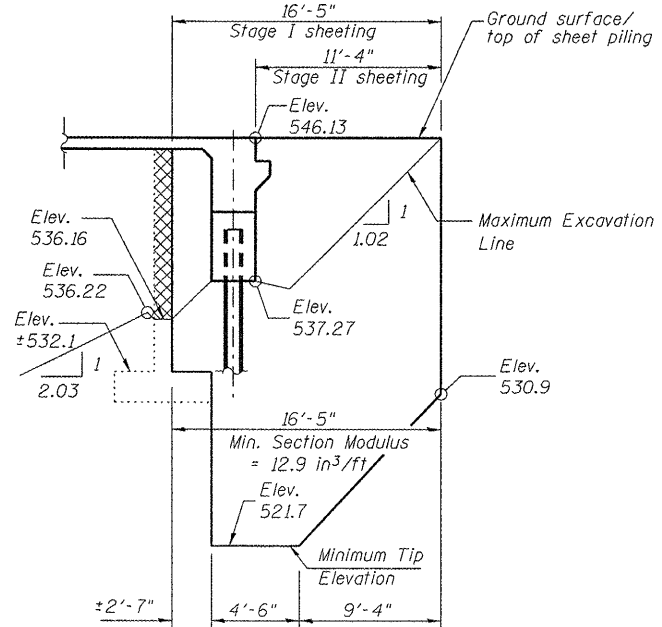
1. Cross hatched areas indicate removal of existing structure.
2. All cross sections are at right Ls to roadway.
3. See roadway plans for quantity of Temporary Concrete Barrier.
4. See sheet 17 of 24 for details of Temporary Concrete Barrier.
5. See sheet 16 of 24 for details of Temporary Steel Railing.
6. See sheet 20 of 24 for details of Bicycle Railing.

If the Contractor chooses to alter the temporary cantilevered sheet piling design requirements shown on the plans, a design submittal including plan details and calculations will be required for review and acceptance by the Engineer.

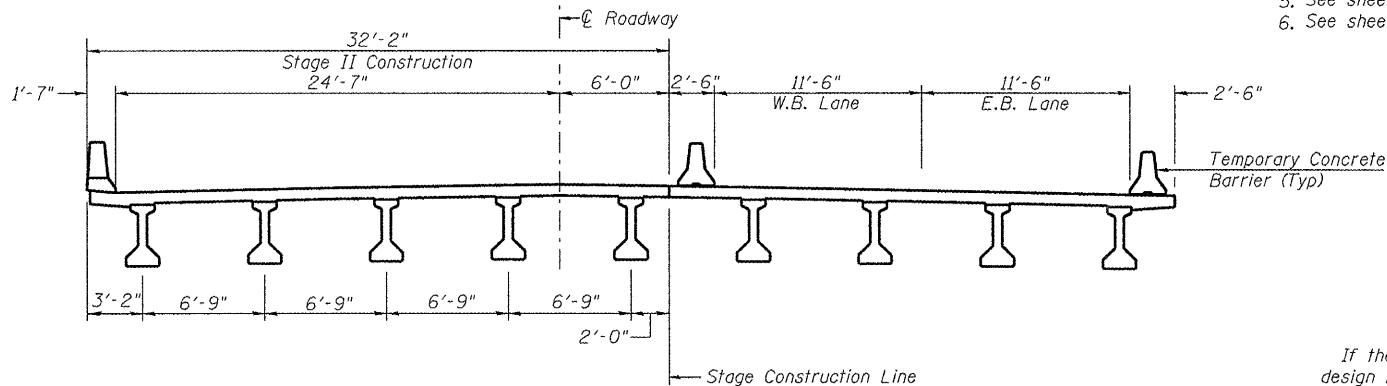
The Contractor shall connect the first sheet to the existing abutment wall to ensure stability of sheets driven to the top of the existing footing. This connection shall be reviewed and accepted by the Engineer and included in the cost for Temporary Sheet Piling.



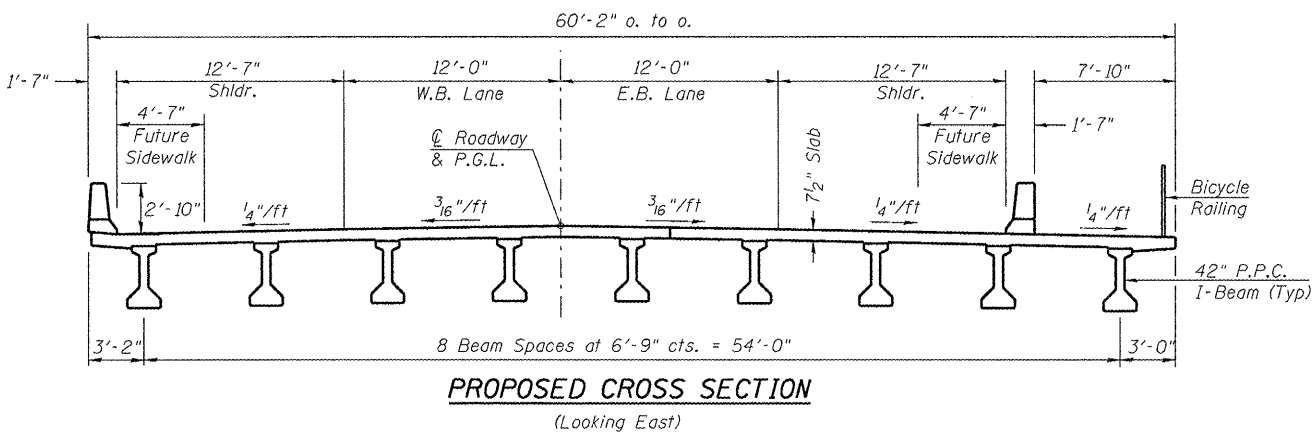
TEMPORARY SHEET PILING WEST ABUTMENT



TEMPORARY SHEET PILING EAST ABUTMENT



STAGE II CONSTRUCTION & TRAFFIC
(Looking East)



PROPOSED CROSS SECTION
(Looking East)

Lin Engineering, Ltd.
Consulting Engineers
Chatham, Illinois

REVISIONS	
NAME	DATE

ILLINOIS DEPARTMENT OF TRANSPORTATION
STAGE CONSTRUCTION DETAILS
U.S. 150 OVER LITTLE FARM CREEK
F.A.U. ROUTE 6757 SECTION (105B)BR-3
TAZEWELL COUNTY
STA. 89+80.58
S.N. 090-0176

11/18/2008 9:23:20 AM ...\\PSE\Modified\090-0176.dgn