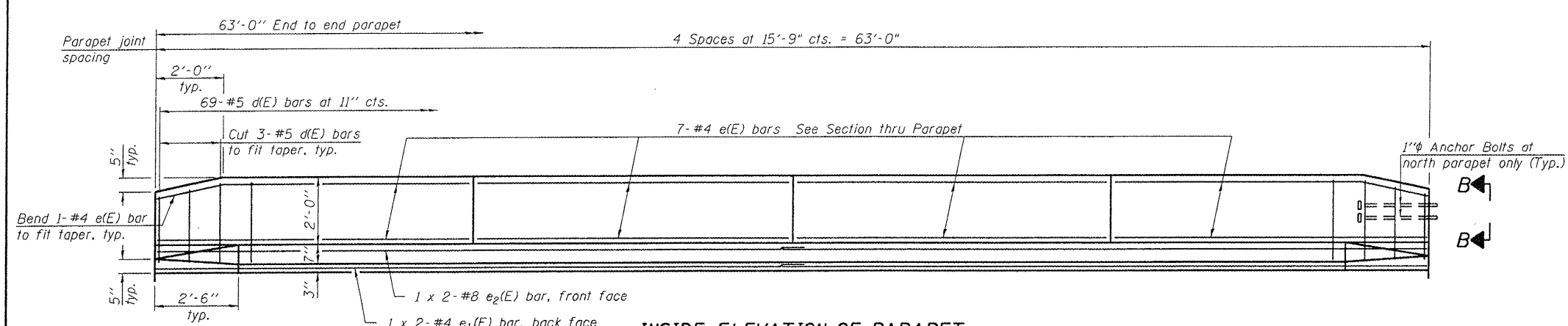


Contract #68086

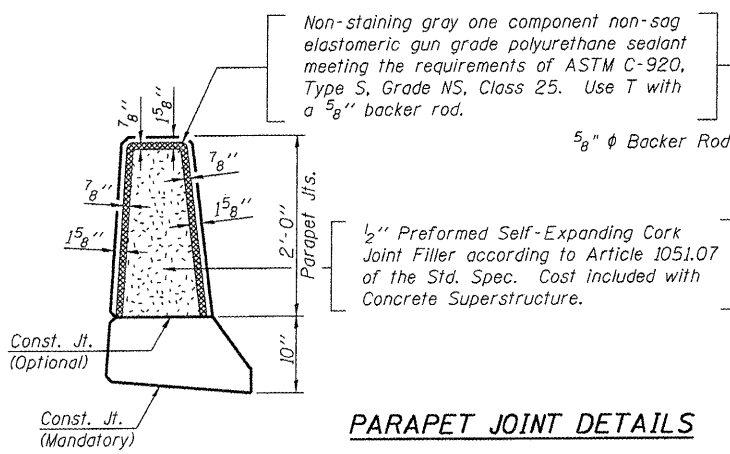


**INSIDE ELEVATION OF PARAPET**

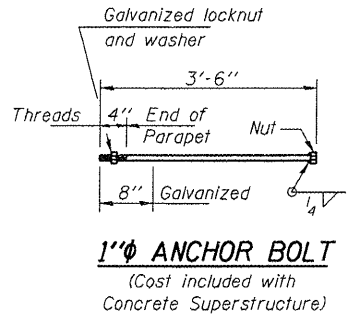
North Parapet Shown.  
South Parapet Similar.

**MINIMUM BAR LAP**

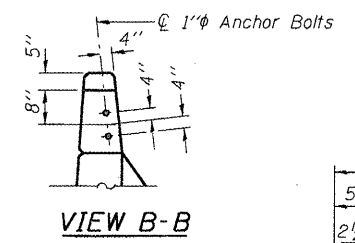
(Parapet)  
#4 bar = 1'-4"  
#8 bar = 3'-5"



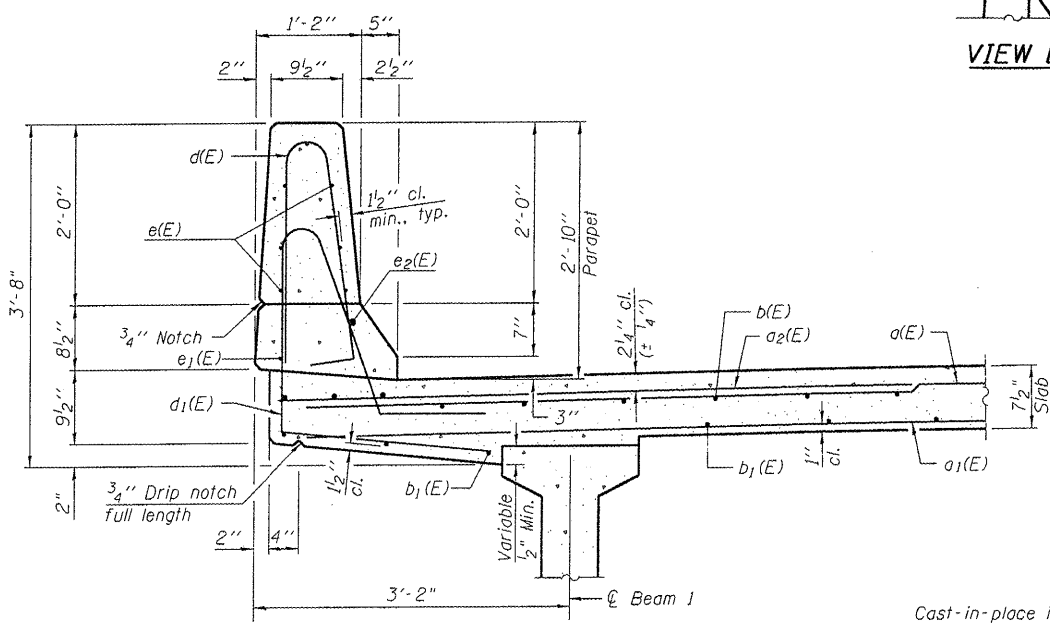
**PARAPET JOINT DETAILS**



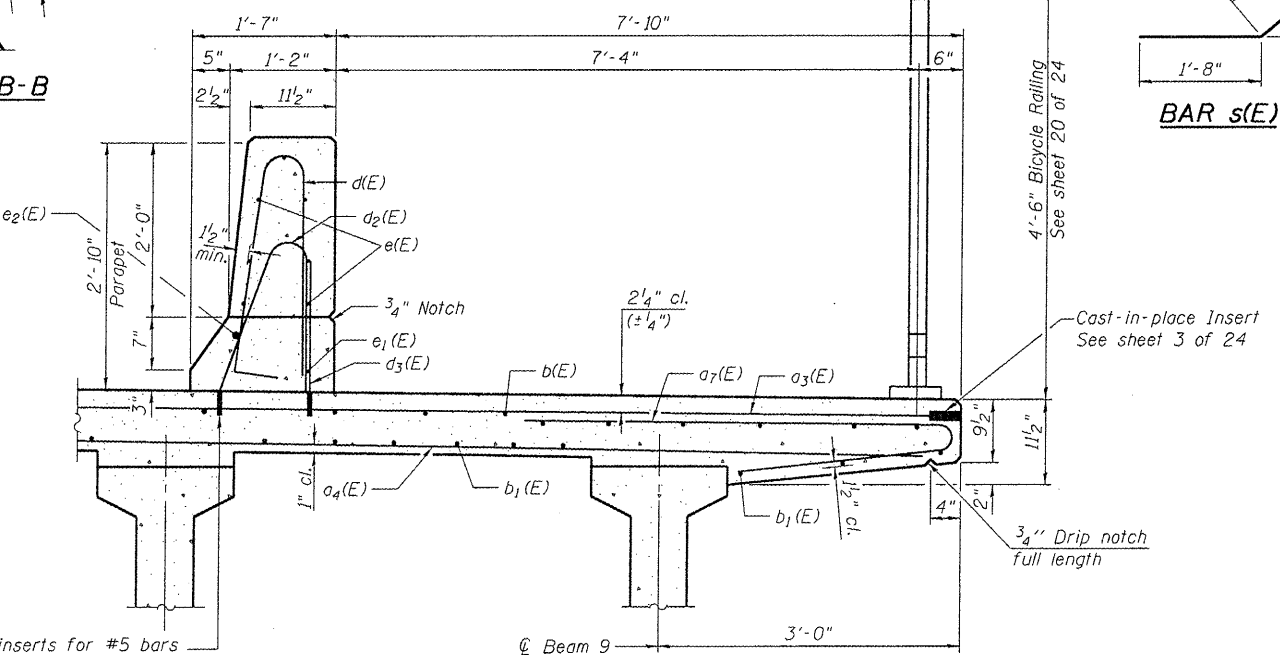
**1" ANCHOR BOLT**  
(Cost included with Concrete Superstructure)



**VIEW B-B**

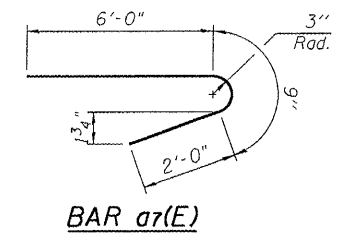


**SECTION THRU NORTH PARAPET**

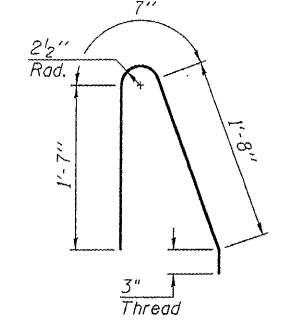


**SECTION THRU SOUTH PARAPET**

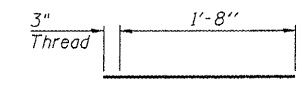
Cast-in-place inserts for #5 bars  
(Safe working load tension = 7,500 lbs)  
Cost included with Reinforcement Bars,  
Epoxy Coated. Provide plastic cap for  
inserts during stage construction.



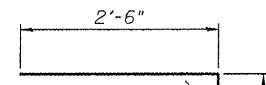
**BAR a7(E)**



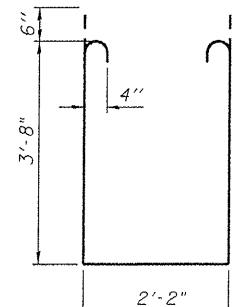
**BAR d2(E)**



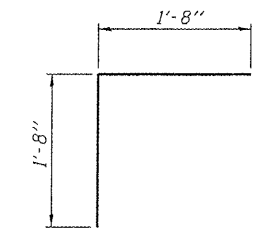
**BAR d3(E)**



**BAR s(E)**



**BAR s1(E)**



**BAR v(E)**

**SUPERSTRUCTURE  
BILL OF MATERIAL**

| Bar                                 | No. | Size     | Length  | Shape |
|-------------------------------------|-----|----------|---------|-------|
| a7(E)                               | 102 | #5       | 31'-8"  | U     |
| a1(E)                               | 77  | #5       | 31'-2"  | —     |
| a2(E)                               | 51  | #6       | 6'-0"   | —     |
| a3(E)                               | 102 | #5       | 27'-8"  | —     |
| a4(E)                               | 77  | #5       | 27'-2"  | —     |
| a5(E)                               | 4   | #5       | 27'-11" | —     |
| a6(E)                               | 4   | #5       | 31'-9"  | —     |
| a7(E)                               | 51  | #6       | 8'-9"   | —     |
| b(E)                                | 126 | #5       | 32'-2"  | —     |
| b1(E)                               | 162 | #5       | 22'-0"  | —     |
| d(E)                                | 138 | #5       | 5'-7"   | U     |
| d1(E)                               | 69  | #5       | 7'-8"   | —     |
| d2(E)                               | 69  | #5       | 4'-1"   | —     |
| d3(E)                               | 69  | #5       | 1'-11"  | —     |
| e(E)                                | 56  | #4       | 15'-5"  | —     |
| e1(E)                               | 4   | #4       | 32'-2"  | —     |
| e2(E)                               | 4   | #8       | 33'-1"  | —     |
| m(E)                                | 4   | #6       | 19'-2"  | —     |
| m1(E)                               | 6   | #6       | 28'-1"  | —     |
| m2(E)                               | 16  | #6       | 9'-2"   | —     |
| m3(E)                               | 14  | #6       | 4'-8"   | —     |
| m4(E)                               | 4   | #6       | 1'-10"  | —     |
| m5(E)                               | 2   | #6       | 3'-8"   | —     |
| m6(E)                               | 2   | #6       | 1'-0"   | —     |
| m7(E)                               | 4   | #6       | 31'-4"  | —     |
| m8(E)                               | 6   | #6       | 32'-4"  | —     |
| m9(E)                               | 20  | #6       | 8'-8"   | —     |
| s(E)                                | 106 | #5       | 5'-8"   | —     |
| s1(E)                               | 108 | #4       | 10'-6"  | —     |
| v(E)                                | 104 | #5       | 3'-4"   | —     |
| Reinforcement Bars,<br>Epoxy Coated |     | Lbs.     | 26330   |       |
| Concrete<br>Superstructure          |     | Cu. Yds. | 146.6   |       |

Bars indicated thus 1 x 2-#8 etc. indicates  
1 line of bars with 2 lengths per line.

ILLINOIS DEPARTMENT OF TRANSPORTATION  
**SUPERSTRUCTURE DETAILS**  
U.S. 150 OVER LITTLE FARM CREEK  
F.A.U. ROUTE 6757 SECTION (105B)BR-3  
TAZEWELL COUNTY  
STA. 89+80.58  
S.N. 090-0176

**REVISIONS**

| NAME | DATE |
|------|------|
|      |      |
|      |      |
|      |      |
|      |      |

**Lin Engineering, Ltd.**  
Consulting Engineers  
Chattanooga, Illinois  
Designed By: RRM Checked By: GLS Drawn By: AJP  
Date: 10/07 File: 090-0176.DGN

\$DATE\$ \$TIME\$ \$FILE\$ \$ABBREV\$