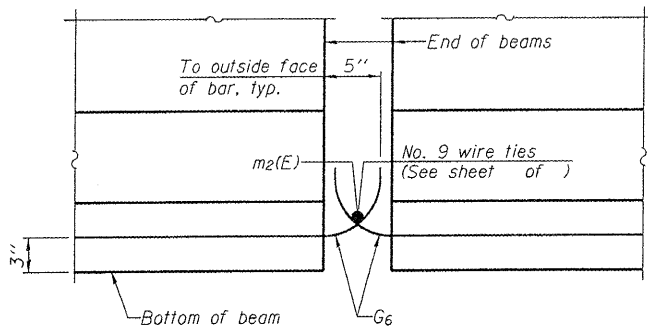
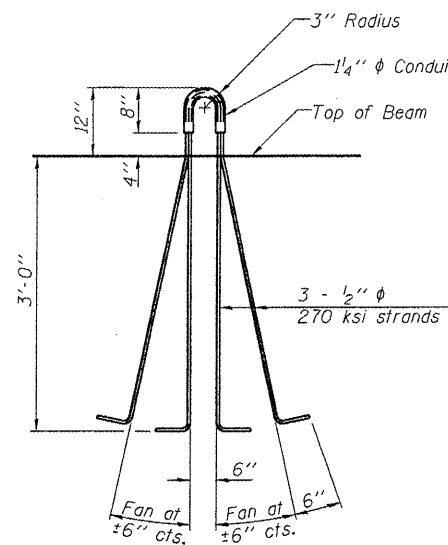


ROUTE NO.	SECTION	COUNTY	TOTAL SHEETS	SHEET	SHEET NO.
FAU 6757 (US 150)	(105B) BR-3	Tazewell	133	81	13
FED. ROAD DIST. NO. 7	ILL. PROJ. NO.	FED. AID PROJECT			

Contract #68086



ELEVATION OF BEAM AT PIER



LIFTING LOOP DETAIL

NOTES

Inserts for $\frac{3}{4}$ " ϕ threaded dowel rods, when specified, are to be two strut, coil type for interior beams and single coil, flared loop type for exterior beams.

Prestressing steel shall be uncoated high strength, low relaxation 7-wire strand, Grade 270.

The nominal diameter shall be $\frac{1}{2}$ " and the nominal cross-sectional area shall be 0.153 sq. in.

Non-prestressing steel shall conform to ASTM A 706 (IL MOD), Grade 60.

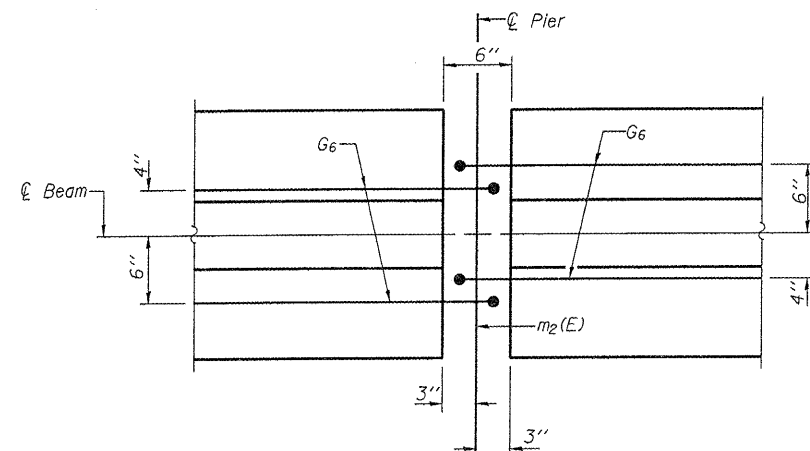
A minimum $2\frac{1}{2}$ " ϕ lifting pin shall be used to engage the lifting loops during handling.

Cut G_6 bars when necessary to maintain $1\frac{1}{2}$ " clearance.

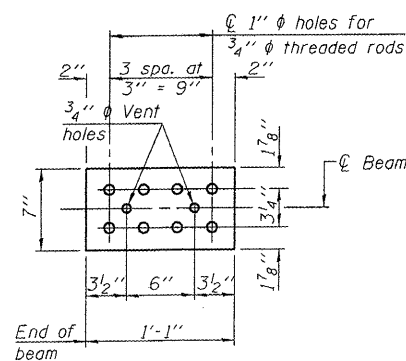
The top and bottom plates shall be AASHTO M270 Grade 50.

The bottom plates and studs shall be galvanized according to AASHTO M11.

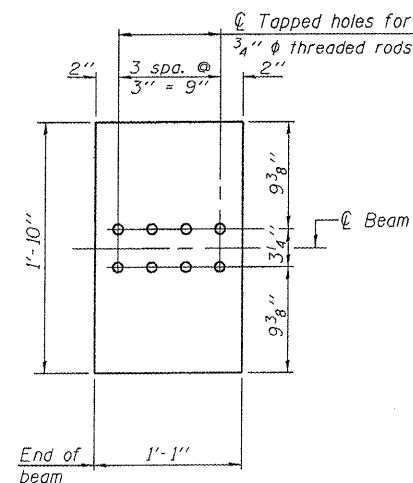
Threaded rods shall be ASTM F 1554 Grade 55.



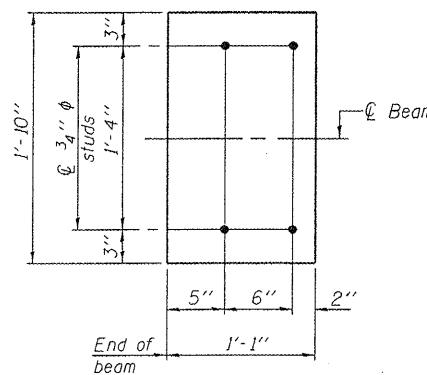
PLAN OF BEAM AT PIER



TOP PLATE

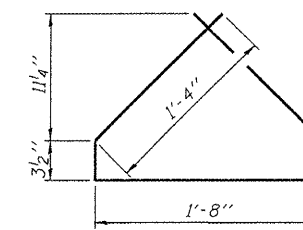


BOTTOM PLATE
(Showing threaded rods)

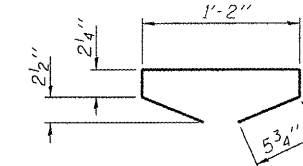


BOTTOM PLATE
(Showing studs)

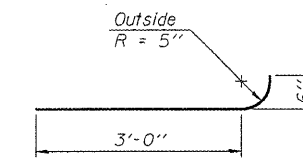
See bearing details for pintle hole locations when required.



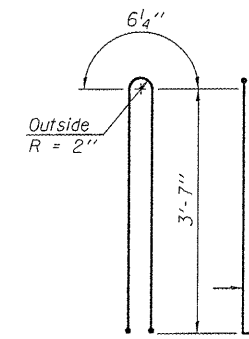
BAR G4



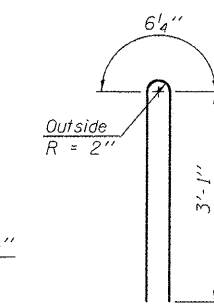
BAR G5



BAR G6



BAR G1



BAR G2

BILL OF MATERIAL

Item	Unit	Total
Furnishing and Erecting Precast Prestressed Concrete I-Beams, 42"	Ft.	558

ILLINOIS DEPARTMENT OF TRANSPORTATION
PPC I-BEAM DETAILS - 2
 U.S. 150 OVER LITTLE FARM CREEK
 F.A.U. ROUTE 6757 SECTION (105B)BR-3
 TAZEWELL COUNTY
 STA. 89+80.58
 S.N. 090-0176

Lin Engineering, Ltd.
 Consulting Engineers
 Chatham, Illinois

Designed By: RKM Checked By: DLS Drawn By: A.J.F.
 Date: 12-01 File: 090-0176.DWG

REVISIONS	
NAME	DATE

\$FILE ABBREV \$
 \$TIME \$
 \$DATE \$

PI-4-42D

9-3-07