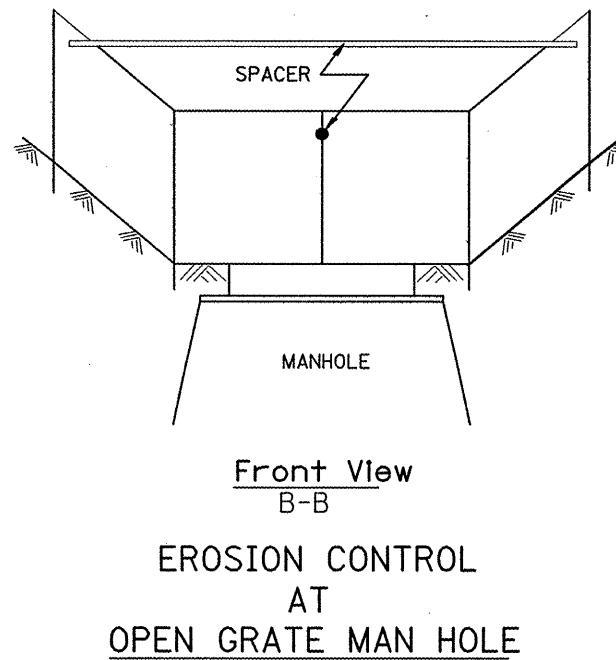
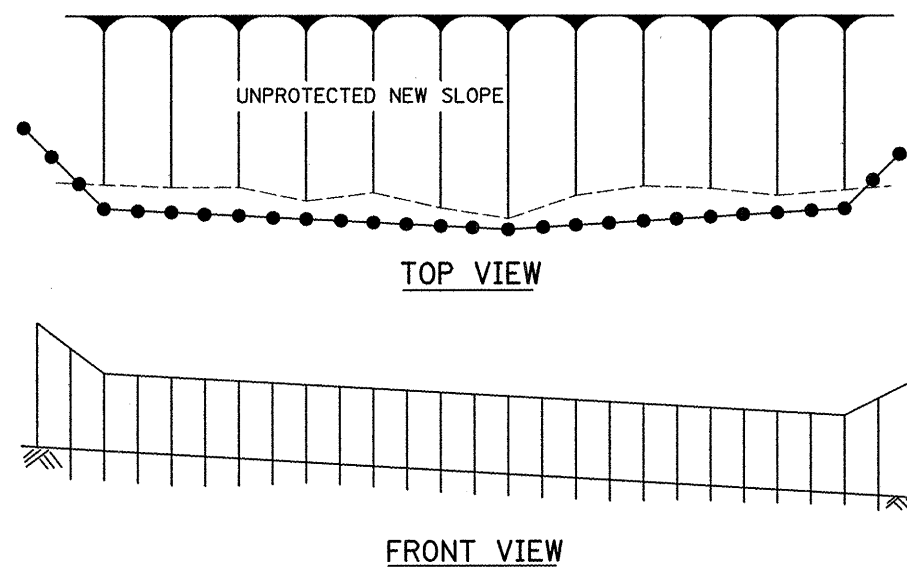
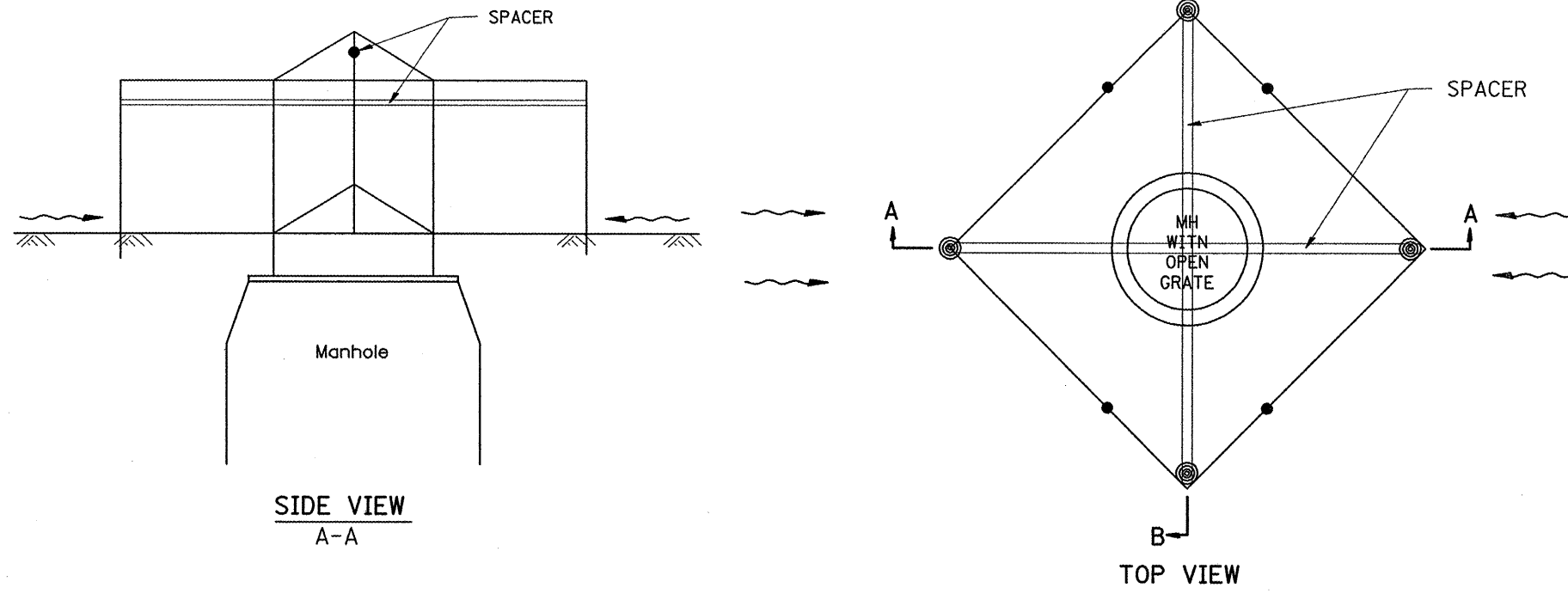
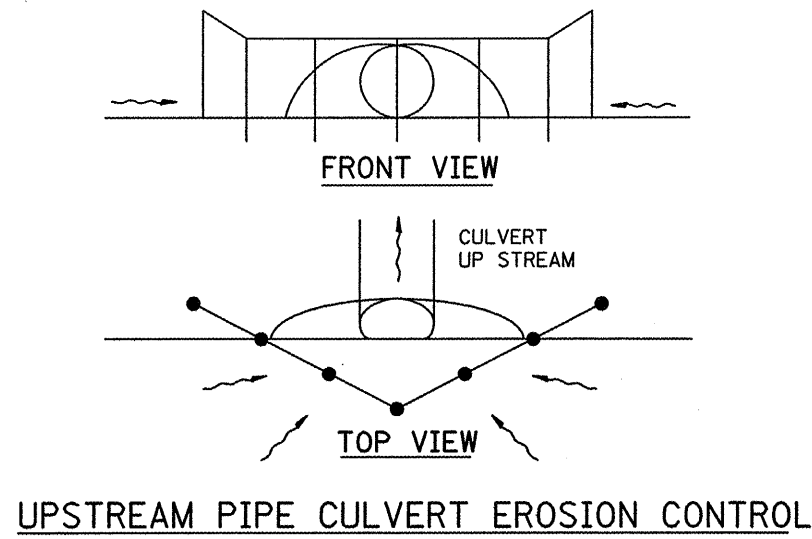


Designer NOTES:  
 1. Designer to modify this Special Detail sheet, as needed, for inclusion in plans.  
 2. Include Highway Standard 280001 "TEMPORARY EROSION CONTROL SYSTEM."



**GENERAL NOTES:**

1. This work shall be performed in accordance with Sections 280 & 1081, of the Standard Specifications.
2. Additional Timber or Metal Post shall be installed, as needed.

All dimensions are in inches (millimeters) unless otherwise noted.

DATE	REVISIONS	BY
1-1-97	RENUM. A-12.05, NEW REVISION BOX	T.P.
3-11-03	ELIMINATED SILT FENCE DITCH CHECK	M.M.A.

F.A.U. RTE.	SECTION	COUNTY	TOTAL SHEETS	SHEET NO.
6757	(105B) BR-2, (105B) BR-3	TAZEWELL	98	133
CONTRACT NO. 68086				
FED. ROAD DIST. NO. ILLINOIS FED. AID PROJECT				

**TYPICAL APPLICATION FOR SILT FILTER FENCE**

FILE NAME = ...District Standards 280.dgn	USER NAME = Plotted by new6	DESIGNED -	REVISED -
		DRAWN -	REVISED -
	PLOT SCALE = 100.0000' / IN.	CHECKED -	REVISED -
	PLOT DATE = 7/29/2008	DATE -	REVISED -

**STATE OF ILLINOIS**  
**DEPARTMENT OF TRANSPORTATION**

**DISTRICT STANDARDS**  
**US 150 OVER LITTLE FARM CREEK**

SCALE: N.T.S.    SHEET NO. OF SHEETS    STA. TO STA.

F.A.U. RTE.	SECTION	COUNTY	TOTAL SHEETS	SHEET NO.
6757	(105B) BR-2, (105B) BR-3	TAZEWELL	98	133
CONTRACT NO. 68086				
FED. ROAD DIST. NO. ILLINOIS FED. AID PROJECT				